

P5 PARENT ENGAGEMENT

20 JANUARY 2024

EVACUATION PLAN

Use the nearest staircase (marked in red) to get down to level 1 (canteen), then move to the School Field in the direction shown



SCHOOL FIELD

LINKBRIDGE



STAGE



HALL



PUBLICITY CLAUSE

Photographs or videos images of you may be taken during today's event. The school may use and publish such photographs or video recordings in school publications, the school's website, social media channels, or other communication channels.

Our Vision:

Nurturing the hearts and minds of Xinminites for a changing world

Lifelong Learner (LL): Xinminite who is curious, receptive to new ideas (open-mindedness), takes responsibilities of his/her learning (with pride) to improve himself/ herself.



Innovative Collaborators (IC): Xinminite who works well with others, adaptable to changing circumstances and resilient in overcoming challenges.

Confident Leader (CL): Xinminite who has the moral courage to distinguish right from wrong, acts on them and contributes actively in class/ school/ community.

Our Mission

Nurturing the hearts and minds of Xinminites for a changing world



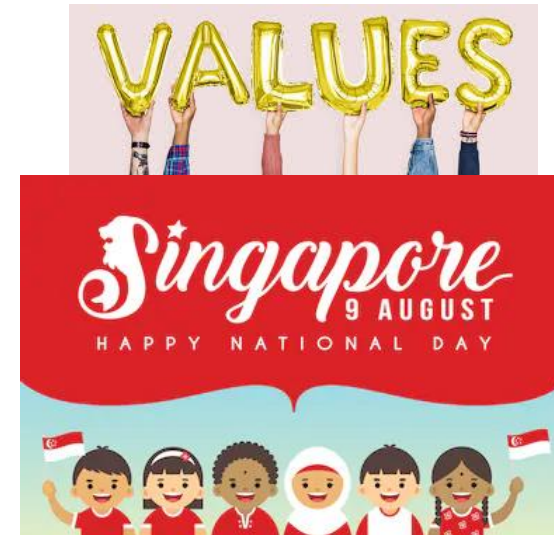
Cognitive



Aesthetics



Physical



Social and Moral

Our Core Values



Carey

Characteristic Of Mother Bears: **affectionate**, **devoted** and **attentive** to the young

We hope that you will be like Carey Bear who shows **quality of care, concern and empathy** towards your friends, your teachers and our environment.

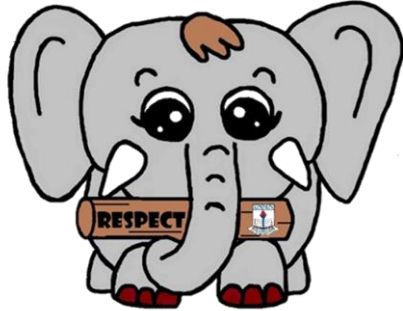


Fluffy

Characteristics of Squirrels: their habit of storing food and retrieving it for a hard season later.

The **disciplined act of being responsible for their own future** and actions of burying seeds to help grow new trees are traits that we hope Xinminites will possess, like our Fluffy.

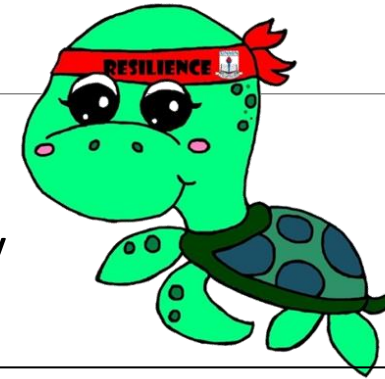
Our Core Values



Elespect

Characteristics of Elephants: peaceful animals who show **respectful behaviour** towards others in their herd.

We hope Xinminites will be like Elespect and show such respect during their interactions with your friends.



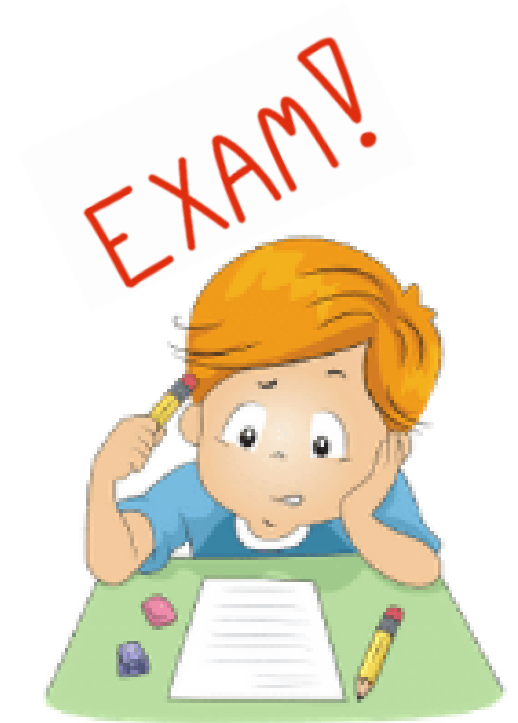
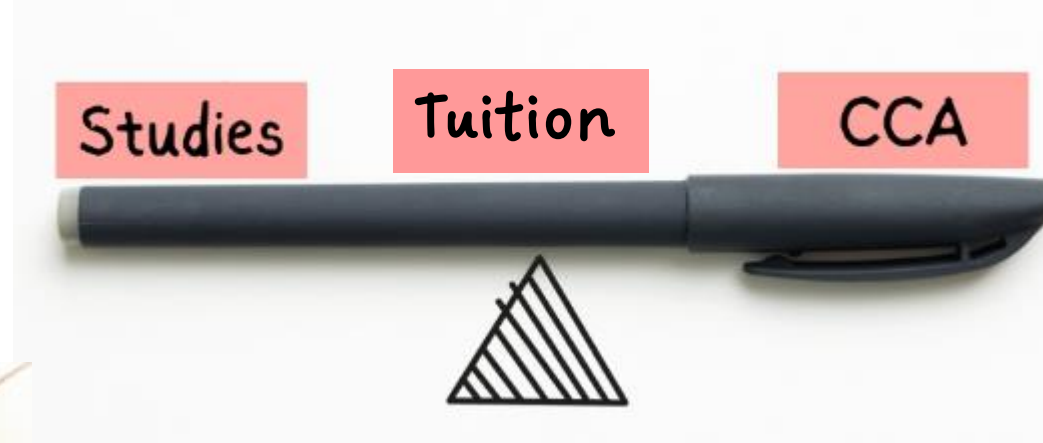
Shelby

Characteristics of Turtles: **remarkable resilience** in swimming thousands of kilometre and demonstrate **lots of strength and determination**

We hope our Xinminites can learn from Shelby who will **stay focused** on your goals and march towards the journey of victory.

TRANSITION FROM P4 TO P5

What to expect: Academic Areas



TRANSITION FROM P4 TO P5

What to expect: Socio-Emotional Areas



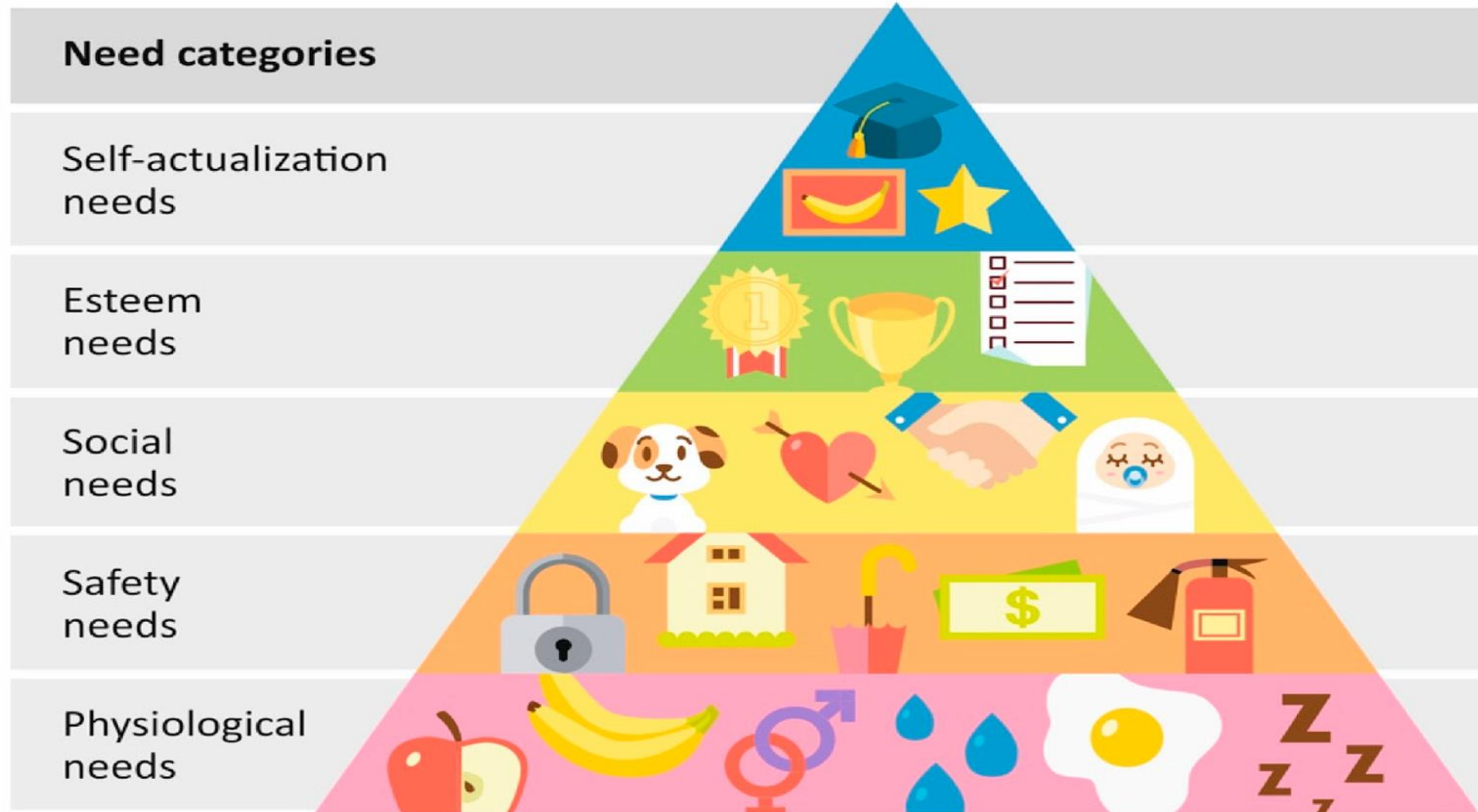
Changing Social
Dynamics

Promoting Healthy Pursuits



Growing
Independence

MASLOW'S HIERARCHY OF NEEDS



SUPPORT FOR XINMINITES

Time Management & Study Skills



SUPPORT FOR XINMINITES



Direct School Admission
(DSA)

SUPPORT FOR XINMINITES

GROWTH MINDSET & TARGET SETTING



- Realistic Expectations



- Use positive language



SUPPORT FOR XINMINITES

COMMUNICATION



- Two Way Communication



- Discuss Success & Challenges



- Celebrate Achievements



SUPPORT FOR XINMINITES

USE OF ONLINE DEVICES



- Establish Clear Screen Time Guidelines



- Monitor Online Activities



- Teach Digital Citizenship



SAFETY WATCH AREA



Avoid dropping off or picking up your child at the Bus bay just outside school. LTA is monitoring the situation closely through occasional stationing of enforcement officers.

HOME-SCHOOL LINKS

Communication Channels:

- ☐ Parents Gateway
 - Termly letters and calendar of events
- ☐ Student Handbook
- ☐ Email: xinmin_ps@moe.edu.sg
- ☐ Phone – 6283 5479
- ☐ Website - <https://www.xinminpri.moe.edu.sg>

HOME SCHOOL LINKS



**Xinmin
School website**



<https://go.gov.sg/xmpsfb>

**Xinmin
Facebook page**



<https://go.gov.sg/xmpinstagram>

**Xinmin
Instagram page**

