

# Let's Share Our Paths Safely and Graciously!

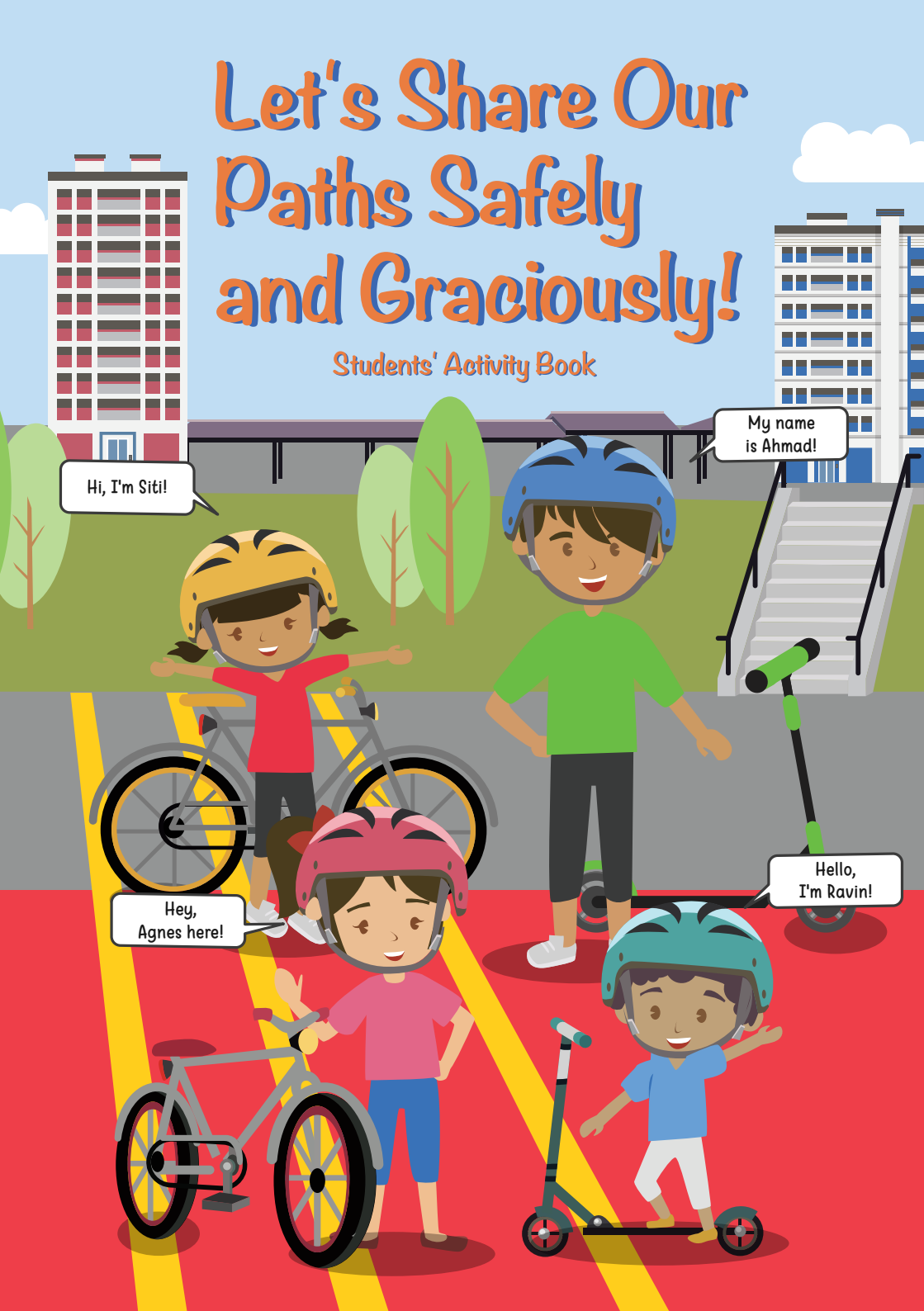
Students' Activity Book

Hi, I'm Siti!

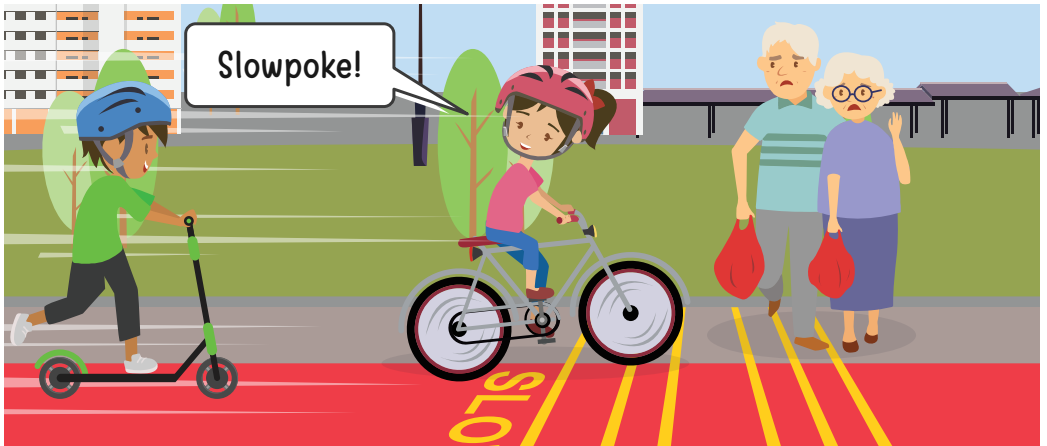
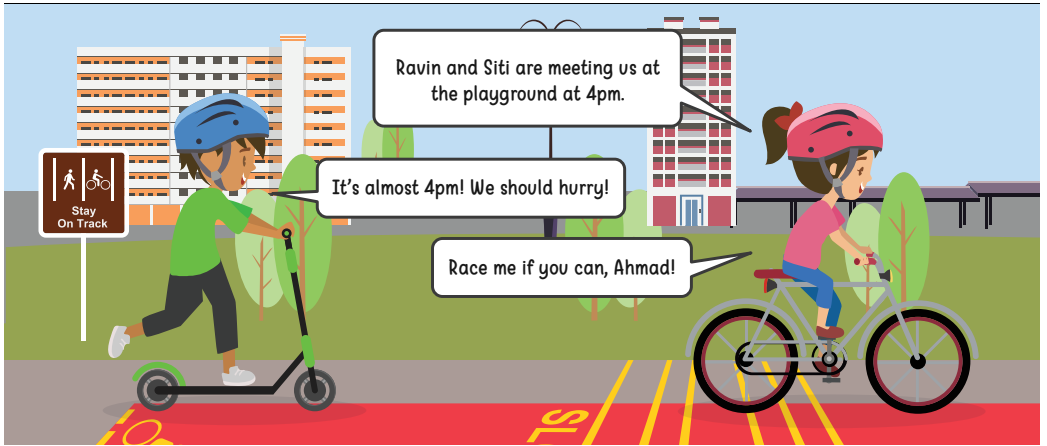
My name  
is Ahmad!

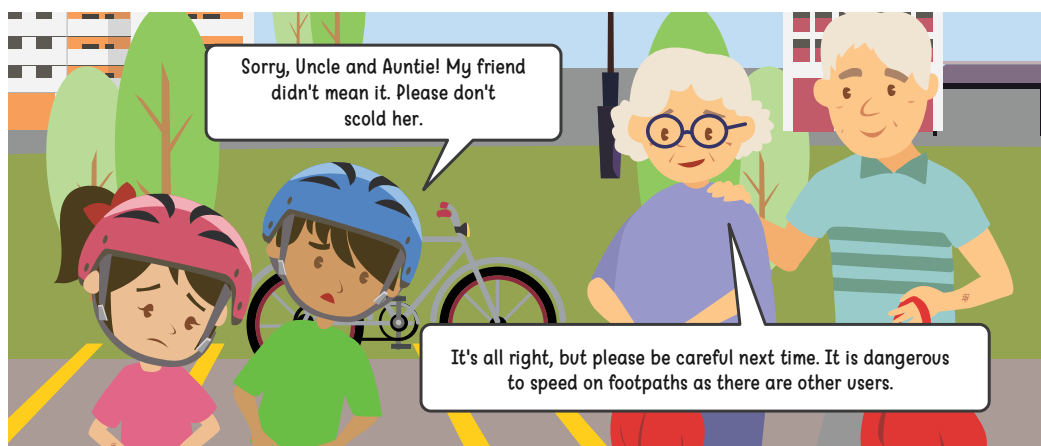
Hey,  
Agnes here!

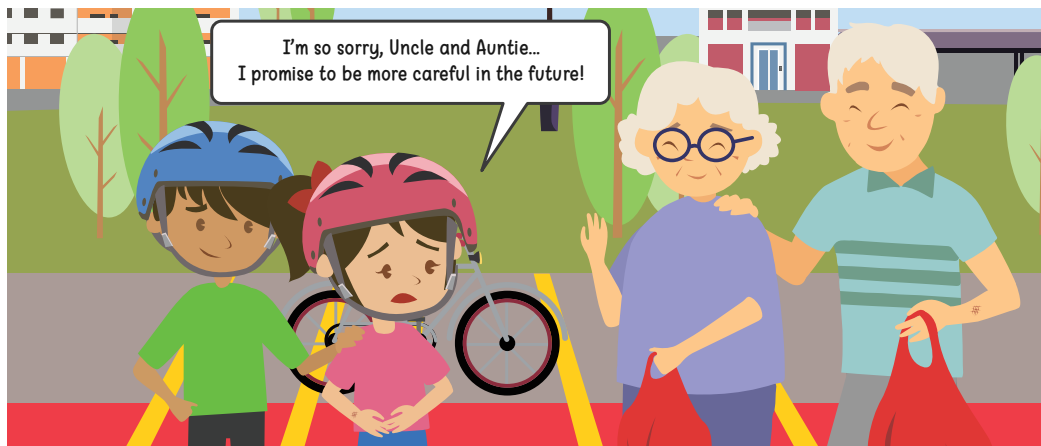
Hello,  
I'm Ravin!



# Let's Ride Safely to the Playground







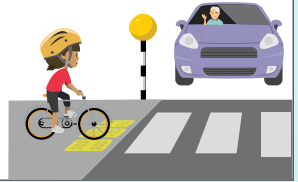
# Be Gracious, Do the Right Thing!



Watch the jingle with your classmates and see if you are able to answer all 5 questions correctly!

1) When you see a road crossing, you should:

- a) stop and look out for traffic before crossing
- b) speed up to cross the road
- c) ride across without checking for traffic



2) When riding on a path, what is the right thing to do?

- a) Keep left on the path
- b) Watch for pedestrians on the path
- c) All of the above

3) At a crowded bus stop, you should:

- a) ride quickly through the bus stop
- b) look out for pedestrians, slow down and walk your bicycle or scooter
- c) shout at others to get out of the way



4) What should you do when you want to overtake others?

- a) Keep a safe distance from other users
- b) Alert others gently by ringing the bell or saying 'Excuse me, thank you'
- c) All of the above

5) When you ride your bicycle or scooter at night, you should:

- a) switch on the front white lights and rear red lights
- b) wear bright coloured clothing
- c) All of the above



# Path Safety Starts with Me!

## Safety Card Matching Game



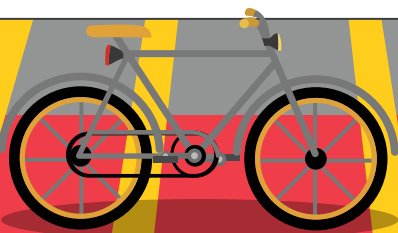
The aim of the game is to collect as many pairs of 'path safety' cards as possible. The player with the most cards win!

### How do I get started?

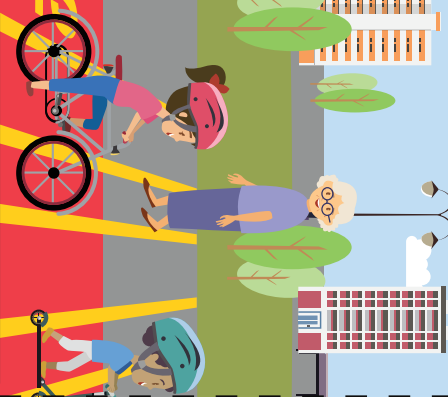
- Cut the cards out along the dotted lines. There are 16 cards in total in the preceding pages.
- You will need 2 players for this game.

### Game play

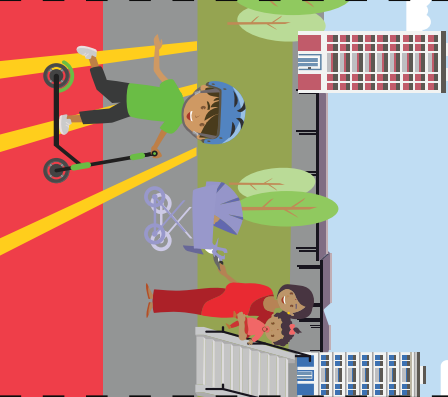
- 1) Shuffle the cards and lay them face down on the table.
- 2) The first player turns over any two cards of his/her choice.
- 3) If the cards match, the player shouts 'Path Safety!' to keep the matching pair of cards, and gets an extra turn for making a match. However, if the cards do not match and the player incorrectly shouts 'Path Safety', he/she will miss a turn.
- 4) If the cards do not match, turn them face down again, and it is the next player's turn.
- 5) The game continues until all the cards are matched. The player with the most pairs of matching cards wins!







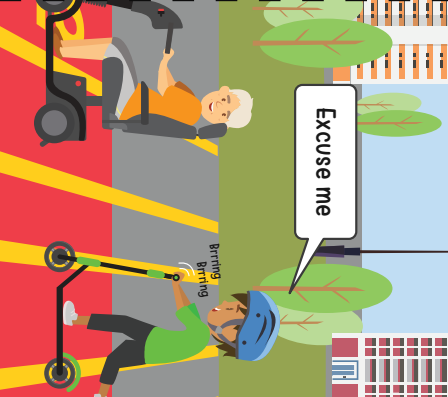
Slow down  
around others



Give way to  
pedestrians



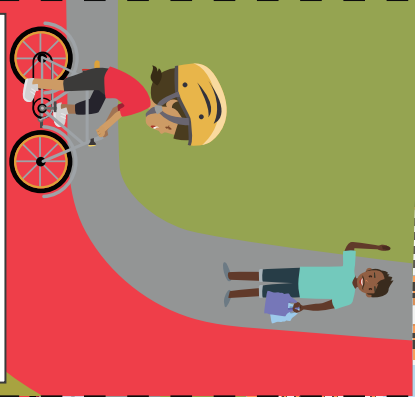
Wear a helmet and  
bright coloured clothes



Alert others before  
overtaking



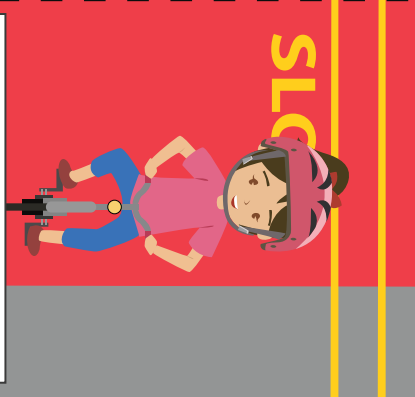
Walk your device in  
crowded places



Slow down when  
approaching bends

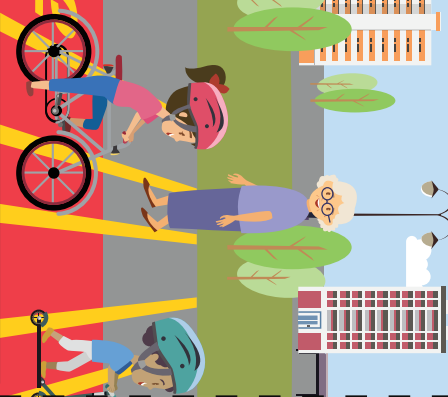


Pay attention to  
other users

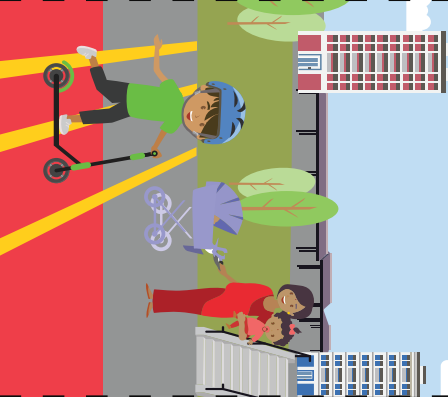


Keep both hands on the  
handlebars when riding





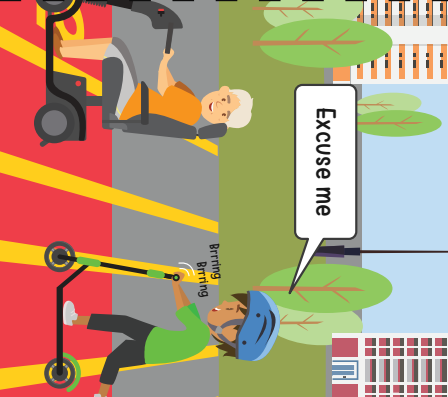
Slow down  
around others



Give way to  
pedestrians



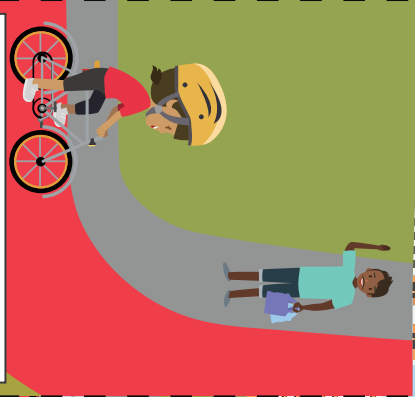
Wear a helmet and  
bright coloured clothes



Alert others before  
overtaking



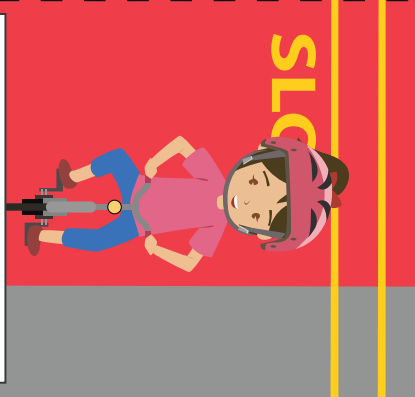
Walk your device in  
crowded places



Slow down when  
approaching bends

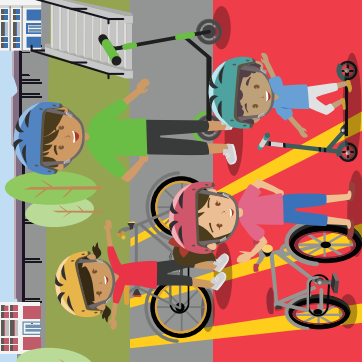


Pay attention to  
other users

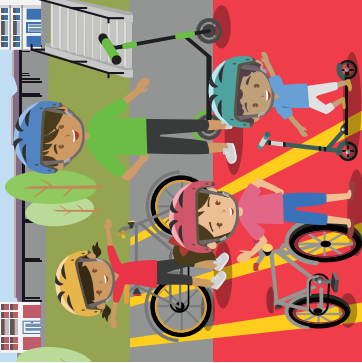


Keep both hands on the  
handlebars when riding

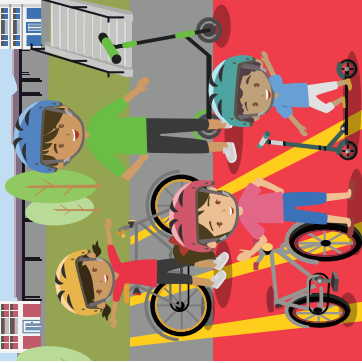
Path Safety  
Starts with Me!



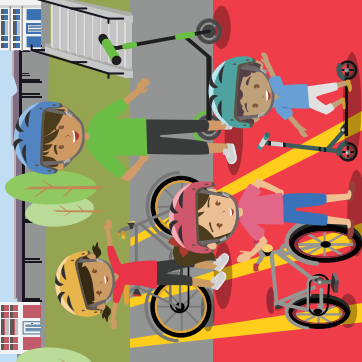
Path Safety  
Starts with Me!



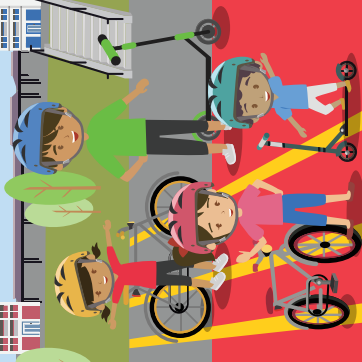
Path Safety  
Starts with Me!



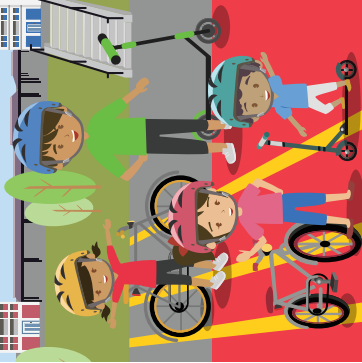
Path Safety  
Starts with Me!



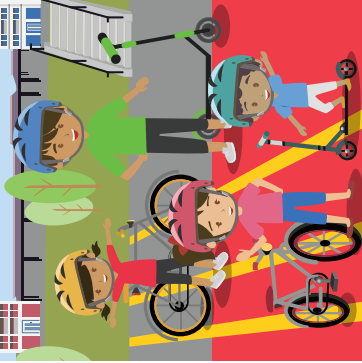
Path Safety  
Starts with Me!



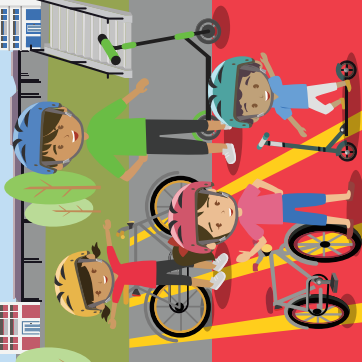
Path Safety  
Starts with Me!



Path Safety  
Starts with Me!



Path Safety  
Starts with Me!



# Word Search



Do you use our paths safely? Search for the missing words in the word puzzle below!

- 1) Be \_\_\_\_\_ and \_\_\_\_\_ on your ride.
- 2) Wear a \_\_\_\_\_ to protect your head from serious injuries.
- 3) Keep a safe \_\_\_\_\_ from other users, especially when overtaking.
- 4) \_\_\_\_\_ play an important part in ensuring the paths are shared safely.  
We should keep alert at all times and be aware of our surroundings.

H	Z	Y	T	E	M	L	E	H	V	C	H
B	W	D	S	M	V	A	Q	I	E	C	D
R	J	W	N	O	S	F	W	R	B	L	F
E	O	S	A	S	L	Q	R	U	S	M	L
G	G	S	I	V	O	U	F	Q	L	B	E
A	V	A	R	L	A	H	P	V	K	L	C
J	F	C	T	B	T	W	S	Q	U	P	N
U	G	O	S	R	V	D	C	R	U	L	A
V	P	C	E	S	I	O	U	Y	T	Y	T
D	K	L	D	E	F	A	S	J	D	K	S
U	A	T	E	G	B	T	H	M	L	D	I
G	E	Z	P	E	T	G	B	K	G	P	D

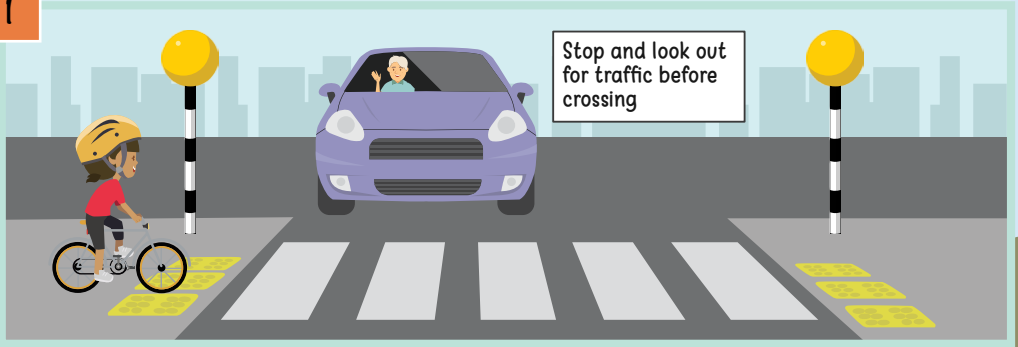


☐ safe                      ☐ helmet                      ☐ pedestrians  
☐ alert                      ☐ distance

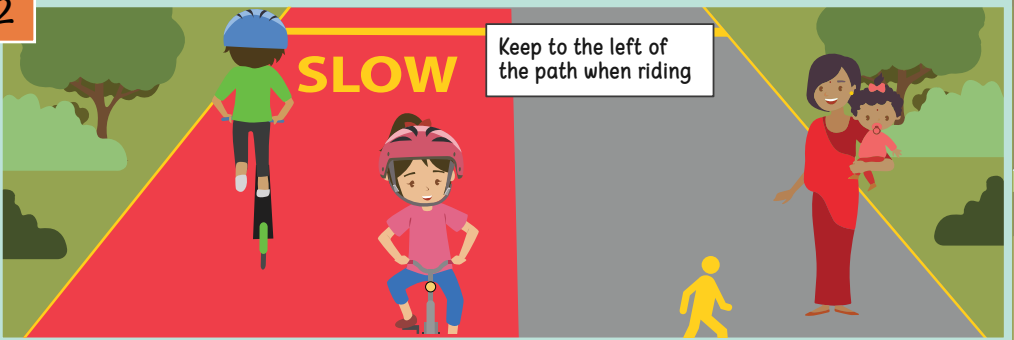


# Safe Riding Tips!

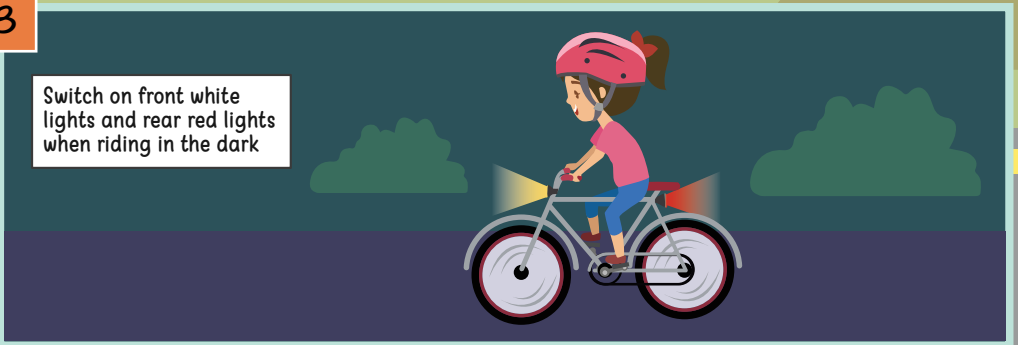
1



2



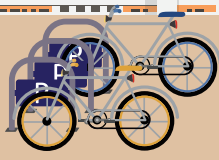
3



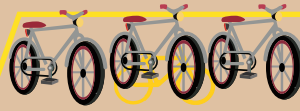
4



5



Park at designated parking spaces such as bicycle racks and yellow boxes



6

Dismount and walk your device when you see 'No Riding' signs



7

Stay On Track

Ride on shared paths when available



8

Stay On Track

Offer help if you are involved in an accident



# Spot the Right ✓ and Wrong ✗ Behaviour!





There are 5 right and 5 wrong behaviour in this picture.  
Can you identify them? Put a tick or cross in the white  
box next to a behaviour.



- Right behaviour
- 1) Stop and look out for traffic before crossing
  - 2) Keep to the left of the path when riding
  - 3) Alert others before overtaking
  - 4) Park at designated parking spaces such as yellow boxes
  - 5) Offer help if you are involved in an accident
- Wrong behaviour
- 1) Riding the bicycle/scooter on the overhead bridge
  - 2) Playing games, listening to music as they walk
  - 3) Doing stunts, not holding to the handlebars of the
  - 4) Bicycle when riding
  - 5) Pedestrian running on the cycling path

