

Great job on completing all the tasks!

Write down 1 thing you have learnt from your visit to the Singapore Mobility Gallery!



Thank you for visiting and we hope to see you again!

SINGAPORE
MOBILITY
GALLERY

About the Singapore Mobility Gallery (SMG):

The SMG showcases various facets of Singapore's dynamic land transport system and provides a behind-the-scenes look at how LTA plans, designs and builds our transport system.

Land Transport Authority
We Keep Your World Moving

About the Land Transport Authority (LTA):

The LTA spearheads land transport developments in Singapore by planning, designing, building and maintaining Singapore's land transport infrastructure and systems.

It aspires to strengthen Singapore's land transport connectivity and integrate a greener and more inclusive public transport system complemented by walk and cycle options.

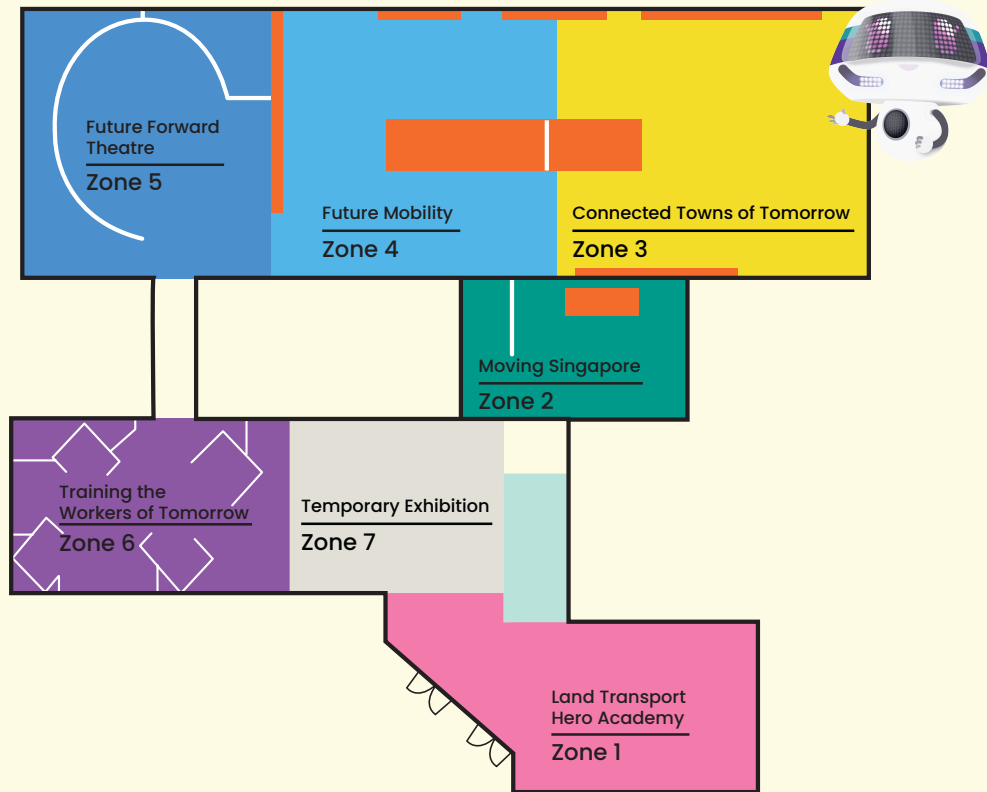
Singapore Mobility Gallery



Explorer's Kit

Gallery Map

Hi there! Welcome to the world of land transport! My name is Jamie and I will be your robot assistant who will guide you through a series of tasks as you explore the gallery!



Before we begin, let us remember:

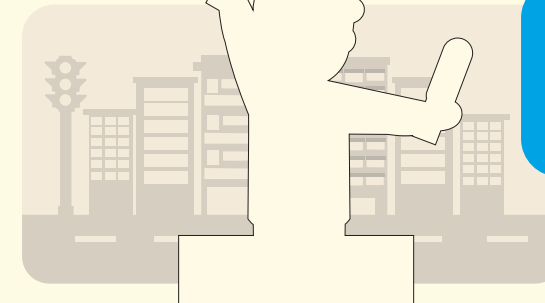
- Speak softly
- Walk gently
- Leave food and drinks outside
- Treat our interactive displays and equipment with care
- Use pencils to write on booklet

Zone 1

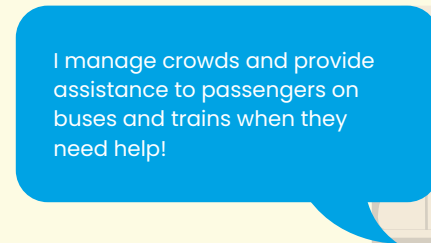
Land Transport Hero Academy

Every day, there are many public transport workers who work tirelessly behind-the-scenes to provide a safe and pleasant journey for commuters. They are the unsung heroes who help ensure that our public transport operates smoothly and efficiently!

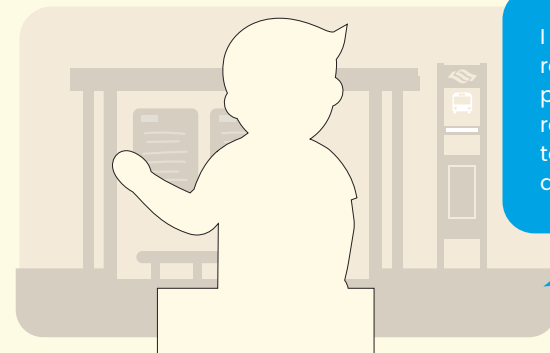
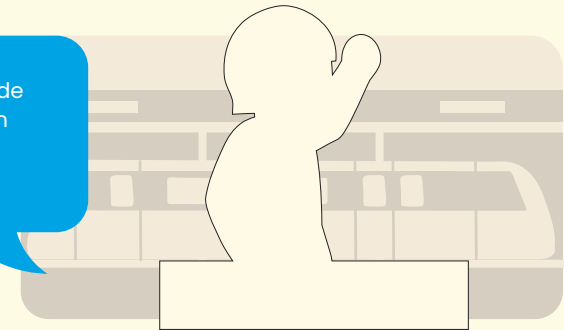
Look around Zone 1. Identify these heroes based on their job description and paste the stickers from the back pocket in the spaces below!



I direct traffic to ensure vehicles can still move smoothly when there are road works or road closures!



I manage crowds and provide assistance to passengers on buses and trains when they need help!



I drive a large vehicle on the road which can carry many passengers at a time! I must remember the route my vehicle takes so that passengers can alight at their right stop!



Smooth Roads

Traffic incidents result in slow-moving traffic or traffic congestion, which could in turn have negative consequences such as pollution and decrease in work productivity.



Imagine you are a Land Transport Operations Executive whose job is to ensure smooth traffic on the roads. Identify and circle three incidents which obstruct smooth traffic below!

Did you know? After spotting road incidents via surveillance cameras, Operations Executives work with relevant parties such the Public Utilities Board, in the case of flooding, to inform road users and ensure that smooth traffic resumes quickly!



Safe Trains

Land Transport Operations Executives also ensure smooth operations of trains and buses. To ensure the safety of all passengers on public transport, they perform random baggage checks for prohibited items.

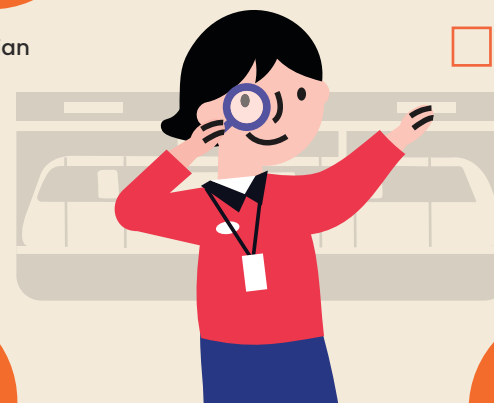
Put a cross [x] for the items which are prohibited items on trains!



☐ Durian



☐ Guide Dog



☐ Aerosol Spray



☐ Bottled Water



☐ Knife

Walk Cycle Ride

With increasing evidence of climate change on earth, there is a need for Singapore to adopt greener modes of transport to slow down the process. Explore this zone to find out what are some of Singapore's transport initiatives to curb climate change!

State the benefits of Walk Cycle Ride for the commuter in the space below.

Commuter



Example:

- Active and healthier lifestyle

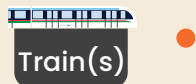
Match the correct number of vehicles required to ferry 1600 passengers!



1



12

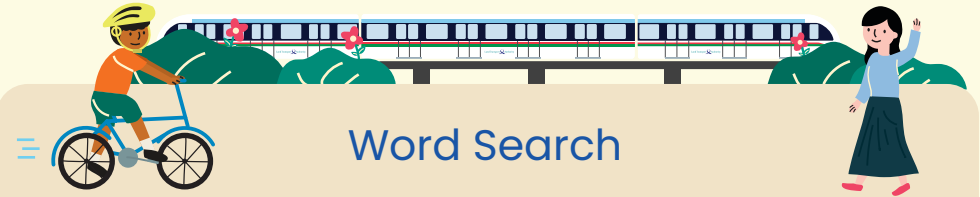


400



Let's Go Car-lite!

Look around the zone and spot the various ways to travel without using cars. Search for four modes of travelling without cars in the puzzle below!



Word Search

H	W	G	A	R	T	Z	D	O	G
T	B	I	C	Y	C	L	E	G	U
Y	Y	W	Z	Y	H	E	S	N	N
V	V	K	E	N	W	G	Y	L	G
O	R	S	P	J	L	A	C	T	O
Y	T	X	M	O	V	K	L	L	T
B	O	T	D	R	W	Y	E	K	U
N	H	L	C	B	U	S	F	Z	L
G	R	C	G	X	A	A	K	D	O
J	Y	T	T	R	A	I	N	H	C



The clues can be found from the illustrations on this page!



Future Mobility

Technology for the Future

Technology has enabled public transport to become efficient, inclusive and seamless.

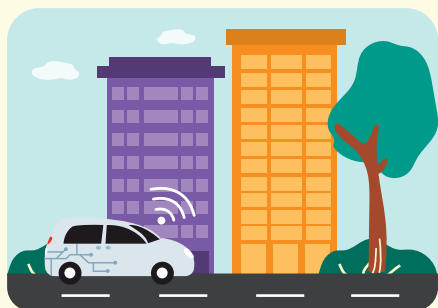
Explore Zone 4 and hunt for these three initiatives which have been enabled through technology. Write down your answer in the spaces below.



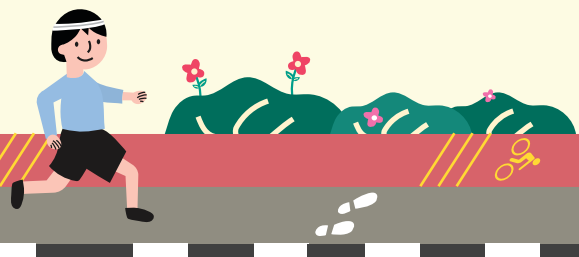
G _ _ _ _ - _ _ _ Plus



B _ _ of T _ _ _ _ _



A _ _ _ _ _ V _ _ _ _ _



Connecting People and Places

Technology has also allowed Singapore to continuously develop its MRT system to meet the demands of its population.

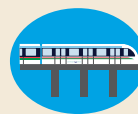


Circle below (increase/decrease) and state the differences between the MRT systems in 1990 and when the TEL & CCL extension are completed.

- 1 Increase/decrease in the number of l _ _ _ _
- 2 Increase/decrease in the number of s _ _ _ _ _

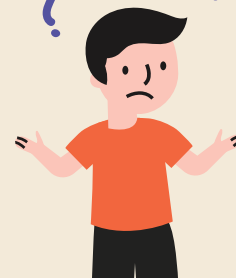
Refer to pages 9–12 for the maps ----->

More Ways than One



John would like to find the shortest way to travel from Serangoon station to Vivocity at Harbourfront station.

Which MRT line would you recommend that he takes? Why?



Refer to page 11 & 12 for the map ----->

Rail Network in 1990

LEGEND

MRT Line

Above Ground

Underground

MRT

M1

North-South Line

W1

East-West Line

Other Transport Modes

Bus Interchange

Cable Car



Rail Network When Construction of TEL and CCL Extension Are Completed



LEGEND

Station Code
NS1 Line Colour
BP Station Number
BP Line Code

MRT Line
Above Ground
Underground

Interchange Code
NS1 EW24 Standard Transfer
NS21 DT11 Tap Out to Transfer

MRT
NS North-South Line
EW East-West Line
NE North-East Line

LRT
BP Bukit Panjang LRT
PE Punggol LRT
SE Sengkang LRT

Other Transport Modes
Bus Interchange
Changi Airport
Cruise Centre
Sentosa Express
Cable Car

* Station Codes and Names to be confirmed

Zone 5

Future Forward Theatre

The Land Transport Authority (LTA) ensures that public transport runs smoothly and safely for commuters. In the event of emergencies, different public agencies work together to handle these emergencies and recover train service quickly and safely.

Imagine you are a Train Station Manager on duty and have been informed by the Train Service Controllers that there is smoke in the train tunnel, resulting in a train service disruption. You have to act fast and lead the commuters out of the train tunnels (as seen below) to the platform safely!



Contact Us



Website: go.gov.sg/smg



Email: SGMobilityGallery@lta.gov.sg



Instagram: [@ltasg](https://www.instagram.com/ltasg)



Facebook: [@Land Transport Authority](https://www.facebook.com/LandTransportAuthority)