

# SELF-SWAB INSTRUCTIONS

## FOR SD BIOSENSOR ANTIGEN RAPID TEST



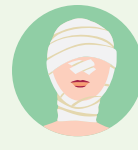
**DO NOT  
PROCEED IF:**



Nosebleed  
in the past  
24 hours



Nasal surgery  
in the last  
4 weeks



Facial injury  
in the last  
8 weeks

### SWABBING PROCEDURE

**1** Please clean your hands before starting the test.



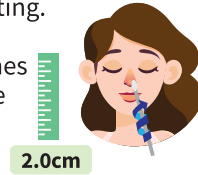
**2** Before starting the test, please take out one swab stick, one test device, one sealed extraction buffer tube and one nozzle cap. Take out the test device from its packaging.



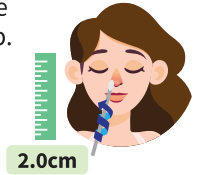
**3** Remove swab stick from package.



**4** Insert the swab stick into the nostril (~2cm) while gently rotating. Twirl the stick 10 times while in the nostril.



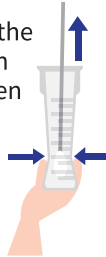
**5** Repeat for the other nostril with the same swab.



**6** Remove the seal from the extraction buffer tube and insert the swab into the extraction buffer tube to mix. While squeezing the buffer tube, stir the swab for 10 times.



**7** Squeeze the extraction buffer tube when extracting the swab stick.



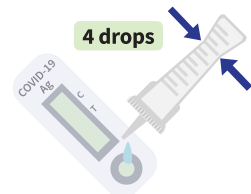
**8** Press the nozzle cap tightly onto the tube.



**9** Use your finger to gently tap the side of the tube a few times. This helps to mix the solution.



**10** Place 4 drops onto the sample well of the test cartridge.



**11** Wait for 15mins before checking the results on the test cartridge. Please keep the cartridge on a flat surface during this time.



**15 MINS**

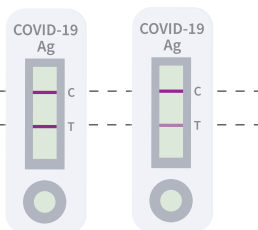
**12** Read the results on the test cartridge.  
**If you see a line appearing at both the "C" and the "T" position, this indicates a positive test. Please seek medical attention for further evaluation and confirmatory testing.**

**If you see a line appearing at only the "C" position, this indicates a negative test.**

**If you see a line appearing at only the "T" position, the test is invalid. Please repeat the test on another test kit.**

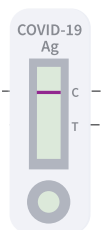
#### POSITIVE

"C" Control Line ---  
"T" Test Line ---



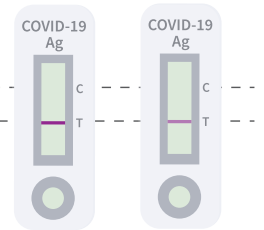
#### NEGATIVE

"C" Control Line ---  
"T" Test Line ---



#### INVALID

"C" Control Line ---  
"T" Test Line ---



**13** Dispose all used items in the test kit into one plastic bag or sealable bag and seal it. Place the sealed bag into another plastic bag and tie the second plastic bag with a rubber band or cable tie. Throw it into the rubbish chute or a pedal bin immediately.



**14** Clean your hands after the test.



**You may also refer to this QR code for video instructions**



MINISTRY OF HEALTH  
SINGAPORE