



OUR TAMPINES HUB

always something for everyone!



HUB GUIDE

WELCOME

Since its Grand Opening on 6 August 2017, Our Tampines Hub (OTH) has established itself as the Heart of Tampines. We are delighted to see the Hub has delivered on residents' wishes. This is important as OTH was conceptualised in consultation with 15,000 residents as an integrated community facility to serve the needs of everyone in Tampines.

Advisers to Tampines Grassroots Organisations



From left to right:
Mr Baey Yam Keng, Dr Koh Poh Koon, Minister Masagos Zulkifli and Mayor Desmond Choo

Beyond its amenities and conveniences, OTH also plays a key role in promoting community living. Even when it was operating with limited facilities after Phase 1's completion in November 2016, OTH has already hosted a significant number of meaningful community events, from cultural festivities, family and health carnivals, philharmonic concerts, arts festivals, and so much more. It has done more now that its facilities are all open. Residents, Grassroots Organisations, Government agencies and corporate partners have all contributed and will continue to play an integral role in shaping this Hub to be truly a Hub to call our very own – Our Tampines Hub.

This Hub Guide showcases all the information you need regarding the services and facilities available at OTH. Built with residents for residents, we strive to serve all members of our community, ensuring that there is something for everyone, right here at Our Tampines Hub!

About Our Tampines Hub

Our Tampines Hub (OTH) is Singapore's first and largest integrated community and lifestyle hub, catering to the needs of over 225,000 Tampines residents and the eastern region of Singapore. With **People's Association** as the **lead agency**, OTH serves **12 stakeholders** and offers more than **30 community, sports, cultural, civic and lifestyle facilities** integrated together over a site area of 5.7 hectares. It boasts a floor area of 120,000 sqm along with a build-up of 232,000sqm.

The development is guided by three principles: **resident-centricity, optimisation of resources and infrastructure**, as well as **encouraging community ownership through resident engagement**.

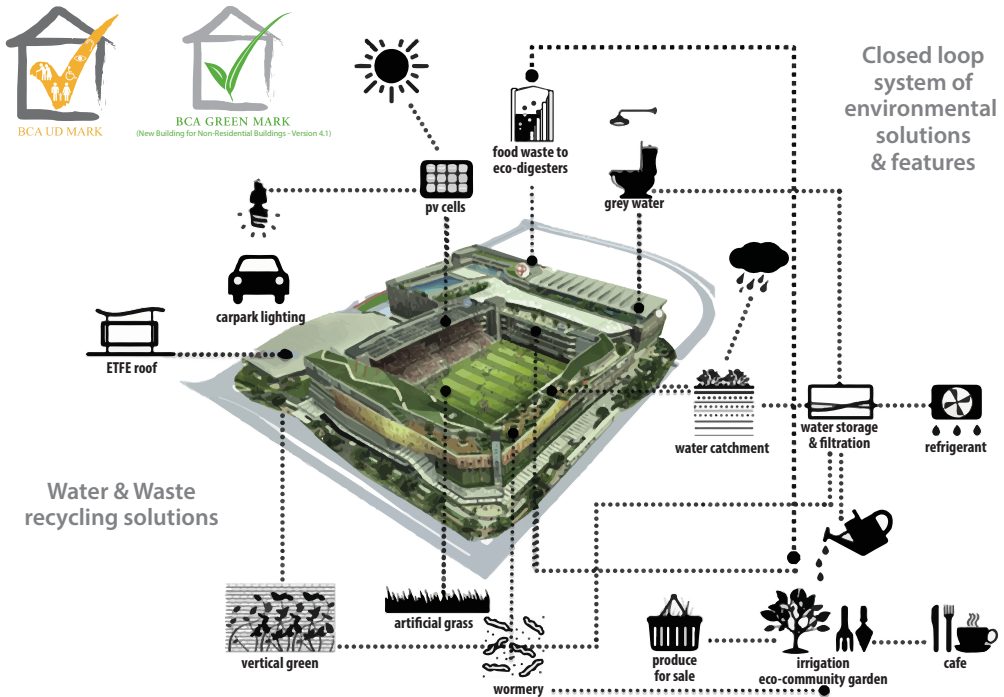
As a resident-centric development, the **5 "E"s** of a participatory design process was employed from the start to ensure purposeful inclusion of the community in the design process.

- **Engage:** Create opportunities for two-way exchanges between stakeholders and residents through social media, focus groups and block parties;
- **Enrich:** Enhance information exchanged between the project team and community so short term inconveniences are better managed against the long term benefits for the community;
- **Empathy:** Being sensitive and conscious toward aspirations of the community, thereby prioritising collective needs and wants;
- **Empower:** The long term sustenance of a development of this scale means engendering a sense of ownership amongst residents through participation;
- **Evaluate:** The ongoing process of constantly taking stock and engaging with residents to ensure continual refinement of the hub.



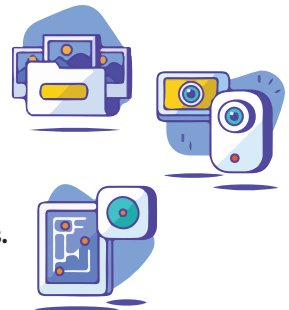
Eco-sustainability at Our Tampines Hub

Our Tampines Hub champions Eco-sustainability and no effort is spared in optimising resources and minimising waste. Having achieved **BCA's Green Market (Platinum) certification**, OTH boasts a closed loop system of environment solutions and features i.e. solar panels, water catchment, storage and filtration equipment, irrigation features, green walls, natural ventilation, Electric Car Park and charging stations, Ethylene Tetra Fluoro Ethylene roofs and a comprehensive food waste management system supported by an Eco-Digester Centre that converts food waste into **3 by-products**, namely **non-potable water, liquid plant nutrients and organic fertiliser** that is used by the Hub and shared with the community.



Smart Nation Technology and Initiatives

Our Tampines Hub is proud to support Smart Nation initiatives in an effort to serve communities efficiently and effectively. These include the adoption of various Smart Nation technology to ensure service delivery exceeds visitor expectations including **intelligent queue management systems, cashless kiosks / systems, video analytic software programmes, interactive way-finding, integrated ticketing systems, mobile apps** and **social media tools**. Taking advantage of innovation and productivity, hub visitors can now enjoy greater convenience and better accessibility.



Stay ahead of the pack
Download Our Tampines Hub app today



ourtampineshub

Tampines Kindness Movement

The Tampines Kindness Movement (TKM) is an offshoot of the **Singapore Kindness Movement** and focuses on building a community culture that practices graciousness toward neighbour and environment. Our Tampines Hub is the crucible for the TKM and supports this by promoting ground-up initiatives of Tampines residents with its Ambassadors i.e. volunteers, across different facets of its operations.

The objective is to engender in all visitors a sense of responsibility toward building this culture because everyone plays a part in contributing toward the creation of a **kinder and more gracious culture toward each other and the environment**.

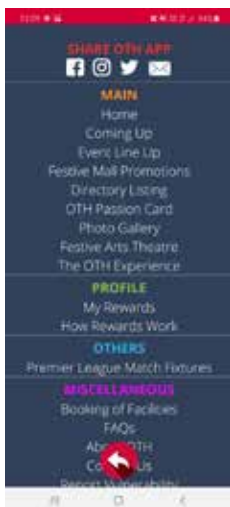


Our Tampines Hub Mobile App

The OTH Mobile App connects our visitors to everything they need to know about the Hub, and provides the latest updates on programmes, events and promotions on the go.

Visitors can book a wide range of sports, community and lifestyle facilities at their convenience, earn points and redeem for an array of rewards as well as find their way around with ease using the app's built-in navigational tool and directory listings.

They can also embark on their very own learning journey with The OTH Experience to gain fascinating insights into the Hub's 10 best-kept secrets and get a mystery gift. The OTH app is available on IOS & Android.



Stay ahead of the pack.
Download Our Tampines Hub app today

BASEMENT 1



There are more than 35 Halal certified eateries within the hub, providing a wide variety of meal options for our Muslim Community!



Festive Mall (B1 / L1)

With the aim to provide convenience, Festive Mall at Our Tampines Hub features **more than 100 shops** across 300,000 sq.ft. of leisure, lifestyle and F&B. The mall houses **50 new-to-market brands** for better variety. It is anchored by a supermarket along with some retailers operating **24-hours**. 30% of all F&B tenants at the mall are **Halal certified** and visitors can enjoy up to 30% discounts from selected retailers with the **Our Tampines Hub PASSion Card**.

Fun Fact!

In 1992, the Building and Social Housing Foundation of the United Nations awarded Tampines Town the World Habitat Award (Developed Country)

B1



Stay ahead of the pack
Download Our Tampines Hub app today



ourtampineshub

Bowling Centre (B1)

Fully equipped with **high-tech bowling system Switch®**, Orchid Bowl at Our Tampines Hub is one of the largest of its kind in the east. Be bowled over by new lanes and equipment that are designed by renowned car designer, *Pininfarina*. Featuring **30 bowling lanes**, you can also enjoy kids bumper bowling, hang out with friends or participate in bowling tournaments. The Bowling Centre is open till late on weekends.



Festive Play (B1)

Festive Play is where the young get to play to their hearts' content. Equipped with a **kids' playground for kids aged 7 & below**, Festive Play also seasonally features other attractions to satisfy the most active of kids.



DID YOU KNOW?

It is hard to think of a sport you can't enjoy at the Hub. From tennis, to futsal, to football, we've got you covered!

Eco-Digester Centre (B1)

The Eco-Digester Centre is fully equipped with 2 Eco-Digester systems that process an average of **1.4 tonnes of food waste daily**; these are accumulated from the Hawker Centre, cafes and supermarket in OTH. This allows Our Tampines Hub to enjoy a sustainable closed loop food waste management system, where the byproducts of the Eco-Digesters (organic fertiliser, liquid nutrients, non-potable water) are used to fertilise the plants at the Eco-Community Garden and landscapes in the hub.



Our Tampines Hub organises Organic Fertilisers giveaways on the **last Sunday of every month**. Redemption takes place at our Eco-Community Garden from 10am. Members of the public are also invited to sign up as a **volunteer** and for a **learning journey** at the Eco-Digester Centre to find out more about Our Tampines Hub's Eco-Sustainable efforts.



Fun Fact!

The Eco-Community Garden has won the Special Award (Edible Garden) at the Skyrise Greenery Awards 2017!

LEVEL 1

Fun Fact!

Join our more than 95,000 users who have downloaded the OTH App now for the latest updates in events, programmes at activities at the hub!



Since its launch in Nov 2016, PSC has won the Excellence in Public Service for Best Practice Award (Service Delivery) & the PA Innovation Award for Most Innovative Project 2017!



Public Service Centre (L1)

Managed by People's Association, Our Tampines Hub's Public Service Centre (PSC) is the **first of its kind in Singapore**, boasting **13 key agencies under one roof**. Serving more than **13,000 customers** a month and processes more than **100,000 transactions** annually, the PSC is open daily except on Public Holidays. A proud supporter of Smart Nation initiatives that encourages **cashless transactions**, you can find the **24-hour eLobby** to access core services online. OTH Passion Card members also enjoy booking discounts and all are able to access the latest updates via the OTH mobile app.

Agency Services at PSC





Festive Walk (L1)

For bookings, email us at
our_tampines_hub@pa.gov.sg

Representing the main thoroughfare from Tampines Street 82 to Tampines Avenue 5, Festive Walk is a 250-metre long thoroughfare that cuts through the development and provides **24/7 convenience** to all residents and visitors, including access to **core facilities** of the hub. Thousands of visitors and residents pass through Festive Walk every day, and Festive Walk is also available for public bookings and for organisations to showcase their activities and events.



Fun Fact!

OTH is home to the largest bowling centre in the East, with 30 bowling lanes under one roof!



Festive Plaza (L1)

For bookings, email us at our_tampines_hub@pa.gov.sg

At the heart of Festive Walk lies the Festive Plaza, an open-space atrium that allows for a myriad of uses and events. Festive Plaza is home to **movie marathons, daily performances, football match screenings, local Tampines talent showcase**, and so much more. Festive Plaza is also available for bookings for community events!



Town Square (L1)

For bookings, log on to OnePA.sg

Managed by People's Association and featuring a 5,000 seat stadium with a **FIFA Quality Pro certified football pitch** and home to the Tampines Rovers, the Town Square is the perfect venue for Tampines GRC events and all other sporting activities under the Sun! Equipped with artificial turf that is ideal for both football and rugby matches, Community Play and other bookings are available for all members of the public via www.OnePA.sg.



The Town Square is home to the **Tampines Rovers Football Club** (nicknamed the Stags). The Stags have won the national league championship eight times, the Singapore Cup thrice, the Singapore Premier League five times and the ASEAN Club Championship once. Fans of the Stags can look forward to many matches to be played at the Town Square.

The Town Square also hosts **Family Fiesta, telematches**, as well as the longest inflatable playground in Singapore, guaranteeing a fun time for all in the family to enjoy.



Gate 1 (L1)

Gate 1 is a dedicated venue for **sporting enthusiasts, casual fitness participants** and so much more. Home to **Zumba, Piloxing, Aerobics** and **Line Dancing** classes, thousands of participants young and old have already enjoyed the myriad of classes that have taken place here. Interested parties can check the OTH Facebook page for more details.



**DID YOU
KNOW?**

OTH hosted the largest turnout for a Piloxing workout with its founder, Ms Viveca Jensen in Nov 2016, another of our accolades listed in the Singapore Book of Records!

Central Plaza (L1)

For bookings, email us at our_tampines_hub@pa.gov.sg

Central Plaza is a sheltered, spacious atrium **spread across 12,000 sq.ft.**, and can be used for a wide variety of events and performances all-year round. The availability of corporate and private bookings also ensure that Central Plaza is an **ideal destination for large gatherings, community events, performances** and even intimate weddings.



Stay ahead of the pack
Download Our Tampines Hub app today



ourtampineshub



Hawker Centre (L1)

Features **more than 40 stalls, 800 seats** and offers **healthier options**. Managed by NEA and operated by Kopitiam, each stall features at least 2 affordable meal options costing no more than \$2.80. A tray return system that connects to a reward scheme also incentivises visitors to return their trays as an act of kindness toward the next diner and to the environment.



Fun Fact!

**Visitors to OTH
walk an average
of 810 metres
within the hub!**



Arena @ OTH (L1) For bookings, log on to [OnePA.sg](https://www.onepa.sg)

Managed by PA, Arena @ OTH features two futsal courts, one in-line hockey court and four tennis courts; complementing the myriad of sporting facilities for the community. **Free play for tennis is also available for seniors aged 55 & above** every weekday (excl. public holidays).

Players at the Arena @ OTH also enjoy 24/7 sheltered comfort, as well as bicycle parking. Visitors may also use the locker & shower facilities all at their disposal.

LEVEL 2

Visitor Centre (L2)

Always wanted to learn more about the hub? Head on down to our Visitor Centre and check out all the **milestones, accolades, fun facts & interactive displays** to keep all in the family informed about all one needs to know about the hub where there's something for everyone!



DID YOU KNOW?

Our Tampines Hub was conceived with input from 15,000 Tampines residents held over 18 months!



OTH will feature a Pedestrian Overhead Bridge connecting Level 2 with the Tampines Regional Centre opposite.

Visitors can enjoy 24-hour sheltered access from their homes to the Town Centre!

Fun Fact!

Community Club (Designated locations between L1, 2 and 3)

The community club facilities at OTH are **integrated throughout the Hub**, tailored to enhance visitor convenience and managed by Tampines Central Community Club. The Wellness Centre is located with similar facilities on Level 3 like the Active Health Lab, Community Health Centre and Family Medicine Clinic, whilst function and interest group rooms are located throughout Levels 1 and 3, including culinary studios within Tampines Regional Library on Level 2, complementing the library's section on cook books and food nutrition. These spaces are flexible and can be used for a myriad of community activities and programmes. Bookings are available via www.OnePA.sg.

L2



Fun Fact!

There are bus services to the Singapore Zoo, Sentosa and even Malaysia right from Our Tampines Hub!



Stay ahead of the pack
Download Our Tampines Hub app today



ourtampineshub



OTH is home to Beely the Bee, the official mascot of the Tampines Kindness Movement!



Tampines Regional Library (L2 – L6)

The Tampines Regional Library at Our Tampines Hub span **5 floors over 180,000 sq ft**, making it 60% larger than before. This all-new, next-generation library is managed by National Library Board, and equipped with **customised spaces, with an archive of 400,000 books**. With a special volunteer-run floor, and a “maker space” where creatives and tinkerers can experiment and create prototypes, **there is something for everyone to learn and enjoy** at the Tampines Regional Library.



Since its Grand Opening
in Aug 2017, OTH
welcomes approximately
1.5 million visitors every
month!

Fun Fact!

Kids' Indoor Playground (L3)

Adding to the myriad of facilities catered for children at the Hub, the Kids' Indoor Playground located on Level 3 inside the Regional Library promises to entertain and enthrall all its young visitors. Spread over more than 3,000 sq. ft., coupled with high ceilings and interactive elements, there is something for everyone aged 12 and under in this wonderland.





Our Tampines Gallery (L2)

Our Tampines Gallery is a community gallery that traces the development of Tampines and how it has evolved to become the vibrant town that many call home today. The gallery also features **social memories of past and present residents of Tampines**, in collaboration with the National Heritage Board.

Located within the Tampines Regional Library, Our Tampines Gallery is **testament to the development's integrated design**, and is also part of the Tampines Heritage Trail.



OTH is home to a state of the art Video Analytics System which helps enhance safety & security!



Team Sports Hall (L2)

For bookings, log on to myactivesg.com

The **1,800 seat** Team Sports Hall can host matches for floorball, handball, volleyball, basketball and sepak takraw, all under one roof. The Team Sports Hall is one of the many well-visited sports facilities at the hub and is managed by ActiveSG.



Stay ahead of the pack
Download Our Tampines Hub app today



ourtampineshub

Rock Wall Climbing (L2)

Fans of rock wall climbing are pleased to note that there is a rock wall built at Sky Terrace at L2 of Our Tampines Hub. **Built to cater to amateur climbers as well as professional rock wall junkies**, the rock wall climbing facility allows you to maximise your potential and unleash your passion for climbing. OTH PAssion Club members enjoy discounted rates at the only rockclimbing facility in Tampines.

Fun
Fact!

Our Tampines Hub is currently the proud record holder of having the longest inflatable Playground (82m) in the Singapore Book of Records!



Sky Terrace (L2)

Designed to be a relaxing enclave for the residents of Tampines, the Sky Terrace is home to the **all-inclusive playground**, **retro swing sets** as well as **games from the past**, including hula hoops, 5 stones, chap teh, and so much more. Adrenaline Junkies can also check out the Rock Climbing facility to immerse in a fun and challenging sporting experience.



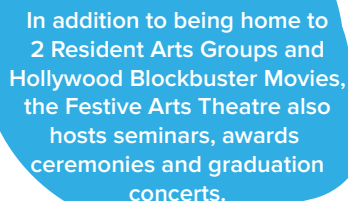
L2



Festive Arts Theatre (L2)

For bookings, email us at our_tampines_hub@pa.gov.sg

The Festive Arts Theatre aims to integrate arts groups into the community, increasing access and **creating quality arts offerings** in Tampines. This purpose built facility is a **new arts touch point** in the east, as part of the National Arts Council island-wide network of **Arts & Culture Nodes**. The theatre is also equipped to showcase the latest local & Hollywood blockbusters in **4K Digital format** and presented in **Dolby 7.1 Surround Sound** for a spellbinding cinematic experience.





Kids' Philharmonic



PAssion Arts

Resident Arts Groups (L2)

The Festive Arts Theatre is home to the hub's **two resident arts groups**, and is a platform to showcase the various programmes of the groups, to reach new audiences within the Tampines community. The three groups are Kids' Philharmonic, and the Singapore Association of Mental Health.

Kids' Philharmonic

Making Music, Forging Friendships and Strengthening Families - this is the core vision of the Kids' Philharmonic, a community philharmonic orchestra committed to nurturing Singapore children & youth in becoming dedicated musicians and responsible young adults.

Singapore Association of Mental Health

The Singapore Association of Mental Health (SAMH) is a non-profit, voluntary welfare organisation seeking to promote mental wellness in the community. SAMH believes in the regular engagement in the arts can benefit one's mental and emotional wellness, which is an important aspect of self-care.

For more information and complimentary tickets, download our mobile app at the Google Play and App Store for more details.

LEVEL 3



Community Auditorium (L3)

For bookings, log on to [OnePA.sg](https://www.onepa.sg) or myactivesg.com

The Community Auditorium is managed by People's Association and houses **20 indoor badminton courts all under one roof, making it the largest indoor badminton facility in Singapore spread across 46,000 sq ft.** With retractable seats that can seat up to 2,000 people and is also equipped with audio-visual technology, so **community and arts related performances and events** can readily be hosted at this flexible space. **Free play for badminton is also available for seniors aged 55 & above.** Details available onsite.

L3



Stay ahead of the pack
Download Our Tampines Hub app today



[ourtampineshub](https://ourtampineshub.com)



Wellness Centre (L3)

The Wellness Centre is managed by People's Association and features the **latest culinary and recreational equipment** and is the ideal platform for seniors to connect and bond over food. Managed by volunteers, the centre organises a variety of programmes like the **National Council of Social Service (NCSS) Community Kitchen Programme**, wine appreciation courses and more.



Health Lab (L3)

At the Health Lab managed by ActiveSG, you can find out more about how to **manage your own health and wellness** by participating in the **Active Health On-Boarding session**. Here, you will find out your current health and fitness levels, as well as get a personalised reading of your health parameters. You can also participate in fitness assessments, physical activities and themed group classes and workshops.

**Fun
Fact!**

At OTH visitors can enjoy **FREE Wi-Fi**, loan a variety of **Board Games** & rent **Kiddy Strollers** for a convenient time with **children!**

Tampines Family Medicine Clinic (L3)

The Tampines Family Medicine Clinic is managed by Changi General Hospital and provides a wide range of healthcare services including doctor's consultation for **acute conditions** and **chronic diseases**. It tends to the needs of all in the family and offers personalised, comprehensive, continuing and preventive medical care.

Fun Fact!

There are 3 play areas at the Hub: Festive Play, an indoor playground, at the Tampines Regional Library and the all-inclusive kids playground!



HomeTeamNS (L3)

HomeTeamNS at Our Tampines Hub provide another thrilling destination for all residents and visitors to enjoy wholesome active fun. Home to **Clip 'n Climb** and **Laser Quest**, And, for their invaluable contributions to national security, SPF and SCDF NSmen, together with their families are also given special recognition with exclusive membership privileges. It is the ideal venue for your next birthday party, corporate gatherings and more.



L3



Stay ahead of the pack
Download Our Tampines Hub app today



ourtampineshub

Community Health Centre (L3)

The Community Health Centre (Tampines), managed by Changi General Hospital, is helmed by experienced nurses and allied health professionals, to complement healthcare services provided by the GPs to deliver **comprehensive care for patients with chronic conditions**. Located at the Wellness Cluster at L3, visitors are able to access a suite of medical and wellness facilities all at one convenient location.

Fun
Fact!



OTH is built on 5.7 hectares of land (equivalent to 7 football fields), with a built-up area of 2.5 million sq ft!

BE OUR AMBASSADOR!

Volunteerism is ideal for ensuring **regular resident engagement** and **comprehensive idea discussion** that serve to further improve Tampines. Let's work together to enrich our community and be part of Our Tampines Hub today!
Email us at our_tampines_hub@pa.gov.sg to sign up!



L3

LEVEL 4



Table Tennis & Chill Zone (L4)

We welcome all to play leisurely or competitively at the Table Tennis Zone on level 4. There are a total of 5 tables for booking with nets provided and a good location to practise your skills. The Chill Zone is a popular hangout amongst students for both studying and taking a breather with each other! Visitors can also borrow **board games** from the **Information Counter** to play within these zones and use the **complimentary Wi-Fi** that is available within the Hub.



Space (L4)

Space @ L4 is a **dedicated room for our volunteers** to receive training, briefings, and to also allow them to enjoy quality time with one another. This **flexible space** is perfect for the volunteers to have meals, rest and recharge before the next engagement.



Stay ahead of the pack
Download Our Tampines Hub app today



ourtampineshub



**DID YOU
KNOW?**

JOY Connect complements the services provided by St Andrew's Senior Care with Dementia Day Care and Community Rehabilitation Services amongst other services.

Senior Care Centre (L4)

Our Senior Care Centre is managed by St Andrew's Community Hospital in collaboration with Changi General Hospital. It provides **day care programmes for seniors** which encourage **social interaction**. To support seniors to age well in the community, **Home Care** and **Home Personal Care** are also provided.

L4



ActiveSG Activity Room (L4)

The ActiveSG Activity Room is an **innovative and interactive fitness studio** that serves as a **multi-purpose function room** suitable for **fitness programmes** and **corporate events**. Fully equipped with **reaction sensors & fitness wearables**, the customisable interactive circuit training system uses a combination of technologies to maximise your workout.

LEVEL 5



L5



Eco-Community Garden (L5)

The Eco-Community Garden provides a **platform** for people to bond with the wider community in our wider eco-sustainability efforts. With over 50 varieties of vegetation, there is also the opportunity to see the Tempinis Tree in person, the tree that gave Tampines its name. We also conduct monthly giveaways of the organic fertiliser, which is held on the last Sunday of every month, at the Eco-Community Garden.

DID YOU KNOW?

There are over 50 varieties of herbs, spices & vegetables at the Eco-Community Garden at Level 5!



Stay ahead of the pack
Download Our Tampines Hub app today



ourtampineshub

Wormery (L5)

We have a fully equipped Wormery that supports and sustains the plants at the Eco-Community Garden. One could say that the Wormery houses some of the most hard working workers at the hub, as these worms work around the clock to **produce organic fertiliser** that is crucial for the health and growth of the vegetation in and around the hub. The wide range of produce here at the Eco-Community Garden is then **harvested for our community kitchen** for culinary classes, reinforcing our mission of giving back to the community.



WORMERY

@ OUR TAMPINES HUB



Our Tampines Hub is a smart building, outfitted with robotic cleaners and restrooms sensors, and many more innovations!



L5



Fun Fact!

Prior to making their home with us at Our Tampines Hub (OTH), the worms we have for this facility were looked after very well by ITE College East as part of OTH's continual collaborations with schools.

Jogging Track (L5)

The elevated jogging track at Our Tampines Hub is the first of its kind and designed to provide an excellent run for all enthusiasts. **Measuring over 1km in length, the jogging track is open daily between 7am and 12 midnight, with locker and shower facilities.** Ideal for both amateur and experienced runners, it is the perfect venue to squeeze in a run anytime, from early in the morning or after a long day's work.

Fun
Fact!

On average, a person stays for 2hr 51min during their visit to Our Tampines Hub!



Sky Garden (L5)

For bookings of BBQ Pits, log on to [OnePA.sg](https://www.onepa.sg)

Adjacent to the Eco-Community Garden, the Sky Garden offer visitors an opportunity to bond in the great outdoors with friends and family. With great views of Town Square and the development at large, the rooftop garden is an ideal place to rest, relax and recharge. It is also where 'Reading Under the Stars' a collaboration with Tampines Regional Library is carried out every evening with books visitors can loan during their visit. BBQ pits are also available for rent, including dedicated pits for use by our Muslim Community.



Stay ahead of the pack
Download Our Tampines Hub app today



[ourtampineshub](https://www.ourtampineshub.sg)

LEVEL 6

OUR TAMPINES HUB
RAMPINES HUB

L6

Our Tampines Hub features **six purpose-built pools** to cater to every interest. The **interactive pool** and **Jacuzzi** offer endless fun for everyone in the family whilst the competition pools for water polo and diving cater not only for sports enthusiasts, but also athletes in training. Regardless of swimming ability, everyone is able to enjoy the comprehensively equipped swimming complex which is now home to **Olympic Gold Medal Champion Joseph Schooling's new swim school, Swim Schooling**. Visitors can also use their ActiveSG credits to access the Swimming Pools.



LEVEL 7



Our Tampines Hub is the proud record holder for 'Largest mass kang le dance' of 980 participants in the Singapore Book of Records

Gymnasium (L7)

The Gym at the Hub is managed by ActiveSG and features **state-of-the-art fitness equipment and technology**. The gym also offers equipment and programmes catered specially for seniors to maintain an active lifestyle in their golden years, which has been proven to improve quality of life and longevity. Gym-goers also enjoy great views of the pools and can use their ActiveSG credits to use the facility. The Gym opens till late, operating till midnight. Details available onsite.



Stay ahead of the pack
Download Our Tampines Hub app today



ourtampineshub

CONTACT US

ActiveSG

Tel: 1800-3441177

Email: visit www.myactive.sg to access feedback portal

Community Health Centre

Tel: 6782 6885

Email: eastern.chc@cgh.com.sg

Family Medicine Clinic

Tel: 6702 6022

HomeTeamNS Tampines

Tel: 6705 9410

Email: tmclub@hometeamns.sg

Housing & Development Board

Tel: 1800-2255432

Email: btmadmin@mailbox.hdb.gov.sg

Ministry of Health

Tel: 6325 9220

Email: visit www.moh.gov.sg to access feedback portal

Ministry of Social & Family Development

Tel: 8146 9477

Email: visit www.msf.gov.sg to access respective corporate divisions

National Arts Council

Tel: 6346 9400

Email: visit www.nac.gov.sg to access feedback portal

National Environment Agency

Tel: 1800-2255632

Email: visit www.nea.gov.sg to access feedback portal

National Heritage Board

Tel: 1800-2255642

Email: nhb_feedback@nhb.gov.sg

North East CDC

Tel: 6424 4000

Email: northeast_cdc@pa.gov.sg

Our Tampines Hub

Tel: 6340 3706 / 6340 3635

Email: our_tampines_hub@pa.gov.sg

Senior Care Centre

Tel: 6291 1861

Email: www.samh.org.sg

Tampines Central CC

Tel: 6785 0004

Email: Pa_tampinescentralcc.pa.gov.sg

Tampines Regional Library

Tel: 6332 3255

Email: enquiry@nlb.gov.sg

Workforce Singapore

Tel: 6883 5885

Email: visit www.wsg.gov.sg to access feedback portal

KEY FACILITIES OPERATING HOURS

Public Service Centre

Monday to Sunday, 9am to 10pm

Closed on Public Holidays

Community Auditorium

Tuesday to Sunday, 7am to 10pm

Maintenance on every Monday

Town Square

Monday to Sunday, 9am to 11pm

Maintenance on every Tuesday & Thursday, 11am to 5pm

Arena @ OTH

Monday to Sunday, 9am to 10pm

Maintenance every Wednesday, 9am to 7pm

Wellness Centre

9am to 6pm (Monday - Friday) & 9am - 1pm (Saturday)

Closed on Sunday & P.H.

Festive Arts Theatre*

9am to 10pm (Monday - Sunday)

Maintenance on every Monday, 9am - 5pm

Swimming Pools

8am to 9pm (Monday - Sunday)

Maintenance on every Tuesday

Library

10am - 9pm (Monday - Sunday)

Closed on P.H., Closed at 5pm on Christmas Eve,

New Year's Eve and eve of Lunar New Year

Gym

7am to 12mn (Monday, Wednesday & Friday)

8.30am to 12mn (Tuesday & Thursday)

8.30am to 9pm (Saturday)

9am to 9pm (Sunday)

9am to 5pm (P.H.)

*subjected to showtimes availability, more details at Information Counter



OUR TAMPINES HUB

There's **Something For Everyone!**

Swimming

Team Sports Hall - L2

Public Service Centre -

Arena @ OTH - L1

Bicycle Bays - L1

Town Sq

South Arrival Plaza - L1

Festive Arts Theatre - L2

Tampines Regional
Library - L2-L6

Tampines
Avenue 4



Gymnasium - L7

Eco-Digester Centre - B1

ing Pools - L6

Festive Walk - L1

Community Auditorium - L3

Festive Mall - B1, L1

L1

Hawker Centre - L1

Eco-Community
Garden - L5

Jogging Track - L5

quare - L1

BBQ Pits - L5

Community Club

Sky Garden - L5, L6

Gate 1 - L1

Tampines
Avenue 5

Legend

Community



Lifestyle



Sports



HOW TO GET TO OUR TAMPINES HUB



Legend

Car route  Walking pathway 
Bus stand  MRT 

Our Tampines Hub Management Office

1 Tampines Walk, #04-01, Singapore 528523
Our_tampines_hub@pa.gov.sg



Getting to OTH by Car:

The Basement 2 Car Park can be accessed by Entrance A & C, via Tampines Avenue 4 & 5 or via Tampines Walk. The Basement 1 Car Park can be accessed by Entrance B (see directions outlined above)



Getting to OTH by Train:

Alight at Tampines MRT Station (DT32, EW2) (approx. 5 min walk)



Getting to OTH by Bus:

Bus stop A & B - 3, 10, 20, 22, 23, 31, 34, 39, 65, 67, 292, 293
Bus stop C - 22, 293



Getting to OTH by Taxi:

The taxi stand is at North Arrival Plaza via Tampines Walk and Arena @ OTH via Tampines Street 82

North Arrival Plaza Taxi stand number: **i51**

Arena @ OTH Taxi stand number: **i50**

OUR PARTNERS





OUR TAMPINES HUB

*"Built by residents,
for residents"*

