

# KINDERGARTEN CARE (KCARE)



Discover

PLAY



Explore



# KINDERGARTEN CARE (KCARE)

**KCare** is provided to parents who require a full-day service for their child. KCare provides care services, and **time** and **space** for children to **play, explore** and **discover** through **specially designed environments with carefully chosen resources**.

**KCare** aims to provide opportunities for children to develop confidence in communicating with others, social skills, self-help skills and values such as responsibility, care and respect.





# KCARE TEAM OF MK @ GONGSHANG

## KCARE @ GSPS TEAM



COMMIT LEARNING  
SCHOOLHOUSE



**Ms Sakina**  
Senior KCare Centre Supervisor



**Ms Yuni**  
Assistant KCare Centre Supervisor



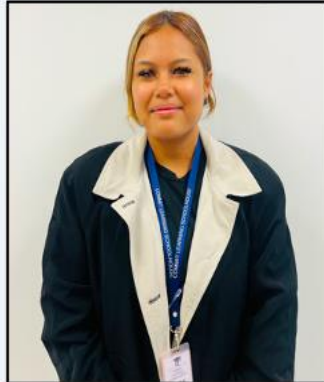
**Ms Shaf**  
KCare Senior Programme Staff



**Ms Su**  
KCare Senior Programme Staff



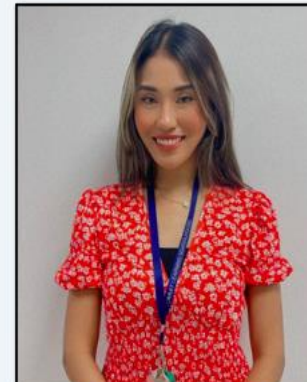
**Ms Jas**  
KCare Programme Staff



**Ms Erl**  
KCare Programme Staff



**Ms Fifi**  
KCare Programme Staff



**Ms Lydia**  
KCare Programme Staff



**Ms Siti Ubaidah**  
Senior KCare Centre Supervisor



## KC ARE @ G SPS TEAM



COMMIT LEARNING  
SCHOOL HOUSE



**Ms Shiqin**  
KCare Programme Staff



**Ms Nisrina**  
KCare Programme Staff



**Ms Raudah**  
KCare Programme Staff



**Ms Kamsina**  
KCare Support Staff



**Auntie Susanti**  
KCare Hygiene Officer



**Auntie Parameswari**  
KCare Hygiene Officer

# KEY FEATURES

## Play

**Exploration and discovery through play**

*Importance of play*

**Large blocks of time for indoor and outdoor play**

*Importance of continuous periods of time for play (e.g. 1 hour)*

**Opportunities for mixed-age play**

*Benefits of mixed-age play and interaction (K1 and K2)*

## Environment

**Specially designed environment and carefully chosen resources**

*Importance of environment*

**Children's choice serves as the impetus within the created environment**

*Benefits of child-initiated play*

# PROGRAMME

**Modular Activities provides opportunities for continuity of children's experiences in different areas of interest across a week. By entering immersive environment that excite them to explore and discover through play, children get to engage in deeper and more complex forms of play.**

---

Art &  
Craft  
Tinkering  
Cookery

For children to imagine and create

For children to develop independence and self-help skills

Music, Movement  
&  
Dramatisation

For children to develop confidence and communication skills

Gardening  
(outdoor)

For children to find out more about the world around them

Sand & Water (outdoor)

through sensory experiences

---

# THE KCARE EXPERIENCE

## Modular Activities

### Art & Craft



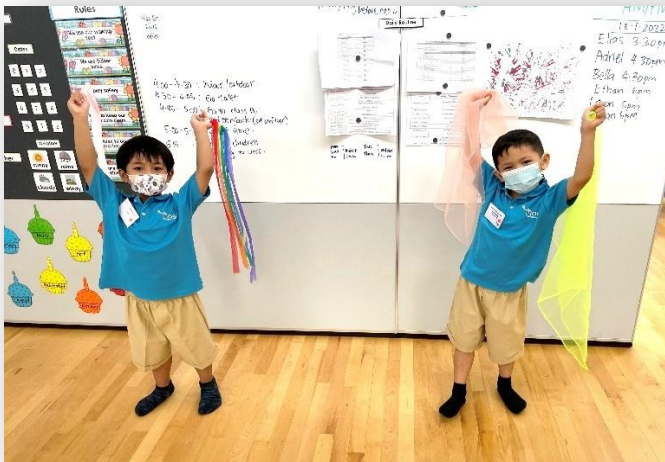
### (Indoor) Cookery



### Tinkering



## Music, Movement & Dramatisation





# THE KCARE EXPERIENCE

Modular Activities

(Outdoor)

**Gardening**



**Sand and Water Play**



# PROGRAMME

**Free Play** provides opportunities for children to choose what and who they want to play with, and how they want to play. They take place in four areas that provide children with a range of play experiences that can inspire their **creativity and imagination**. Nurturing reading among the children is also important and **Dedicated Reading Time** is provided for children to be engaged in reading daily.

## Indoor Free Play

Construction &  
Manipulative  
Free Play



Dramatic  
Free Play



## Outdoor Free Play

Outdoor  
Free Play



Sand & Water  
Play



Dedicated Reading Time



# KCARE ROUTINES AND ENVIRONMENT

Health Check Area, Drop Off, Pick up, Sign in and Sign Out Points

## Health Check Area Upon Arrival

**\*Parents/Caregivers should leave only after health check is cleared**



Black out timings to take note: (Strictly no arrival or dismissal)

7.45am to 8.15am

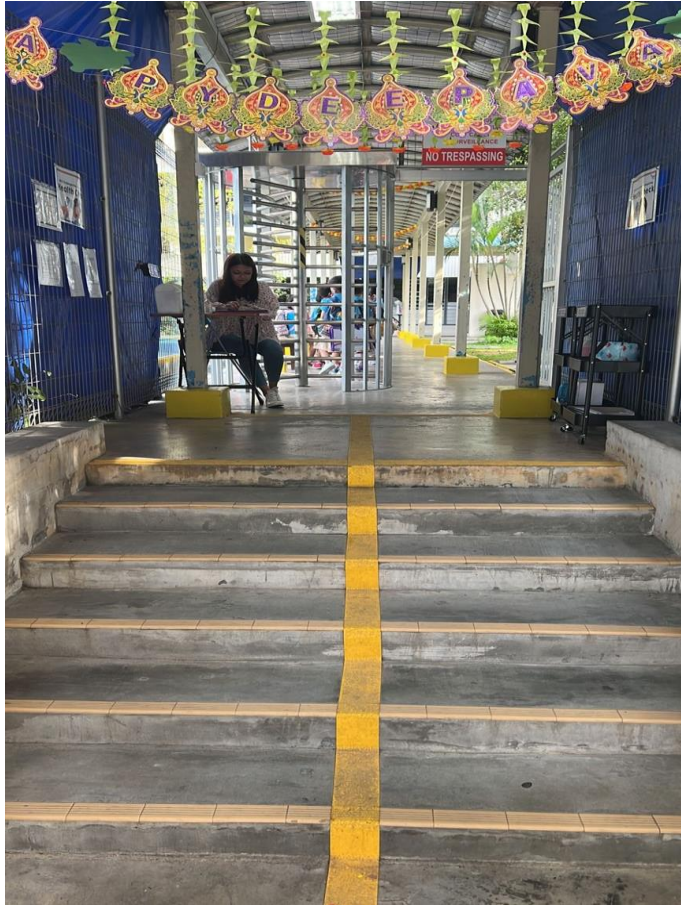
11.45am to 12.15pm

12.45pm to 1.15pm

4.45pm to 5.15pm

# KCare Routines and Environment

## Drop Off and Pick Up Points



Gate 4 Entrance



Walk to holding area



# KCare Routines and Environment

## Drop Off, Pick up, Sign in and Sign out Points

### Arrival

7.00am – 7.45am

8.15am - 8.45am

(After 8.45am, next arrival will be at  
10am / 11am only)

### Fixed Dismissal Timings:

5.30pm (1<sup>st</sup> batch)

6.00pm onwards (2nd batch)

### Adhoc Dismissal Timings:

12.30pm (After lunch)

4.30pm (After Modular)

### Reminder:

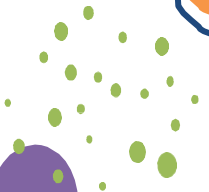
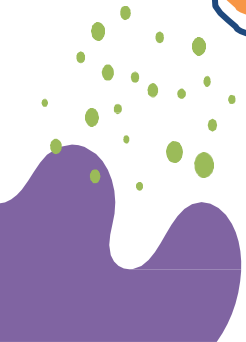
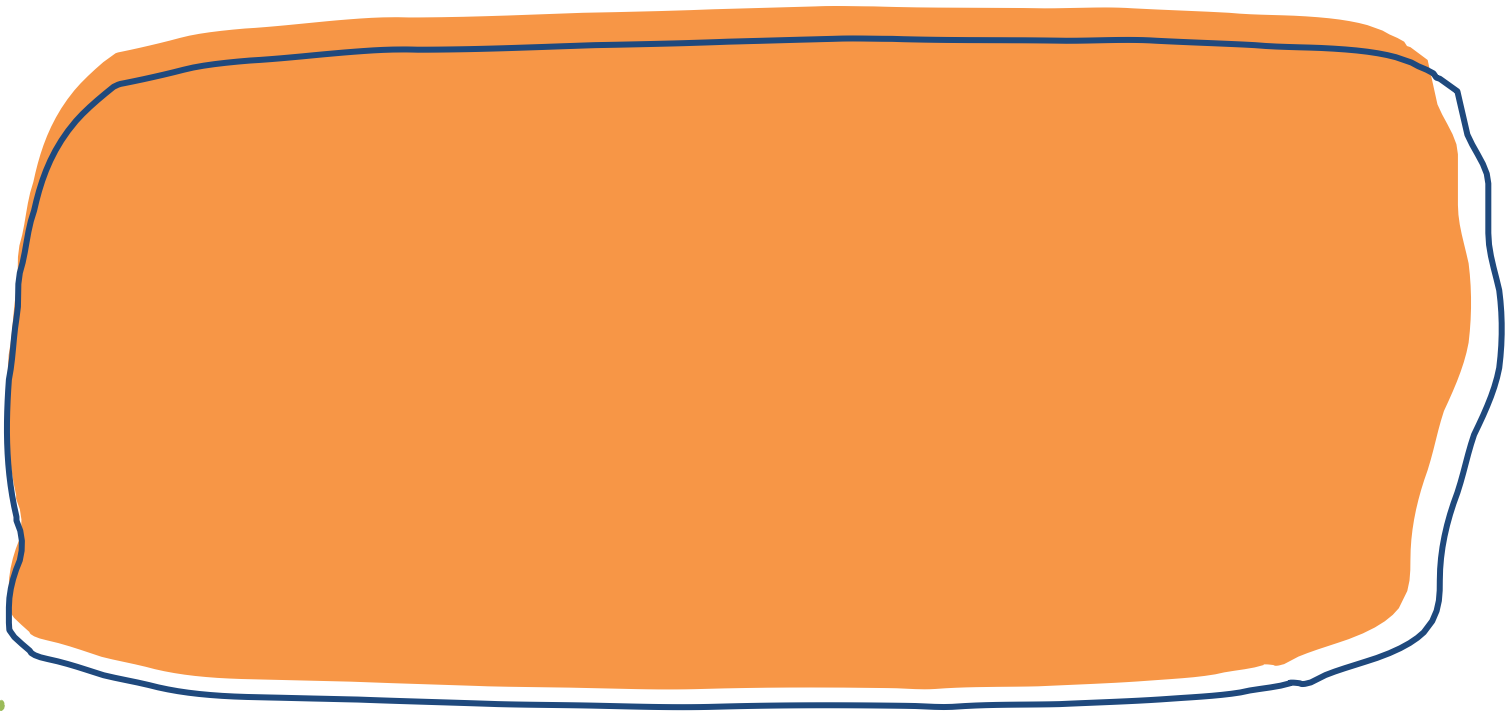
- 1) We will only wait for 10 minutes during the dismissal slots. If parents does not reach on time, your child will be brought back to the gate again at the next dismissal timing slot.
- 1) 2) For any changes of dismissal timing, please inform KCare before 2pm on the day itself for us to arrange accordingly.

# KCare @ Gongshang

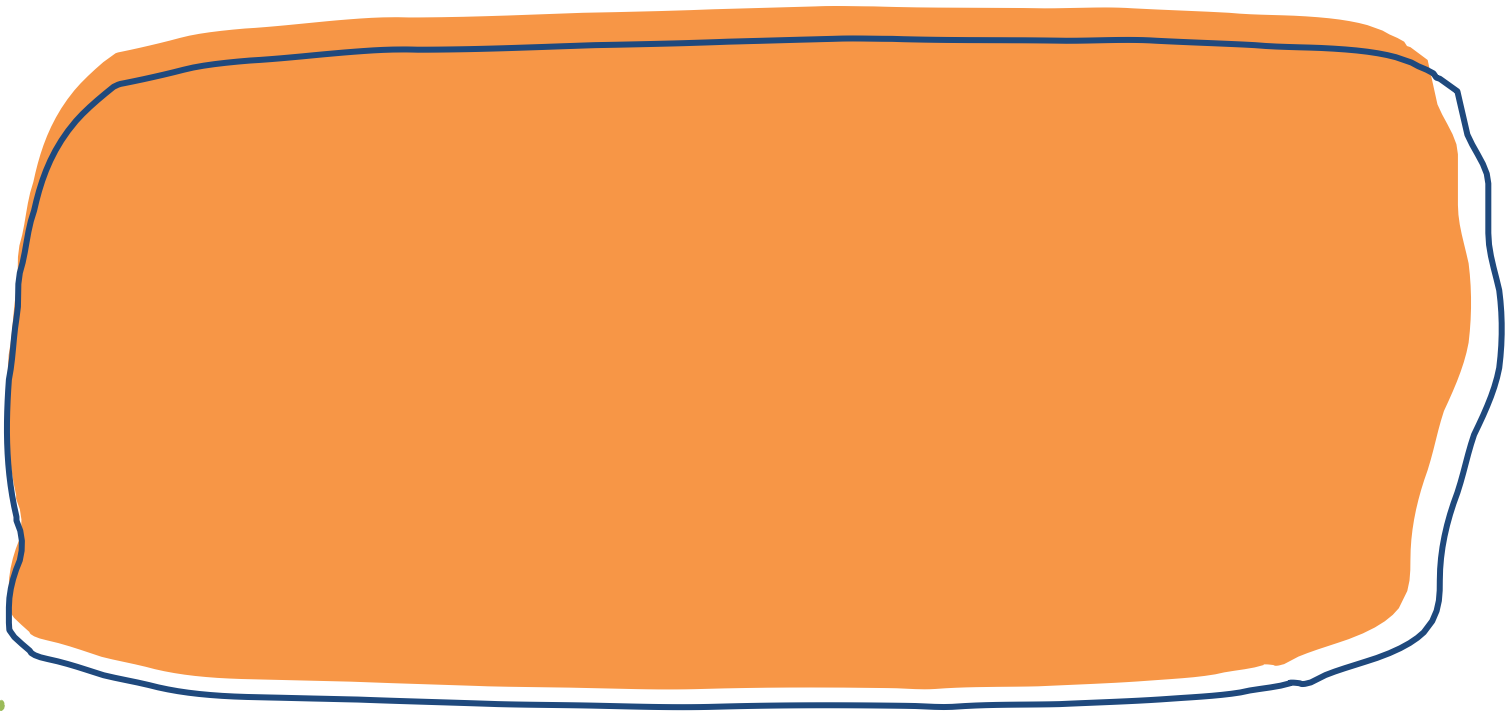
OUR KCARE  
ENVIRONMEN  
T

# HOMEROOM









# HOMEROOM



# LIBRARY CORNER





# INDOOR PLAY AREA





# OUTDOOR PLAY AREA



# OUTDOOR PLAY AREA





# WATERPLAY AREA



# WATERPLAY AREA





# SAND PLAY AREA





# GARDENING AREA





# GARDENING AREA



# A TYPICAL DAY

## Sample Timetable (AM K

\*Kindly take note that the timetable maybe subjected to changes

Time	Activity
0700 - 0830	Arrival and Health Check Breakfast
0830 - 0930	Outdoor Free Play
0930 - 1030	Modular Activities
1030 - 1045	15 minutes of Dedicated Reading Time
1045 - 1300	Nap / Lunch / Wipe down
1300 - 1700	MOE Kindergarten
1700 - 1900	Indoor/Outdoor Free Play Quiet Time and Dismissal

**KCare resides within MK.**

**Both MK and KCare will work out an arrangement for the handover of children.**



# A TYPICAL DAY

**Sample Timetable (PM KCare)** \*Kindly take note that the timetable maybe

Time	Activity
0700 - 0745	Arrival and Health Check
0800 - 1200	MOE Kindergarten
1200 - 1230	Arrival and Health Check
1230 - 1430	Lunch / Rest / Nap
1430 - 1500	Afternoon Snack
1500 - 1600	Modular Activities
1600- 1700	Outdoor Free Play
1700-1715	15 minutes of Dedicated Reading Time
1700 - 1900	Indoor/Outdoor Free Play Quiet Time and Dismissal

**KCare resides within MK.**

**Both MK and KCare will work out an arrangement for the handover of children**

# ROGRAMME

## Sample Timetable (KCare)

**\*Kindly take note that the timetable maybe subjected to changes**

Time	Activity
7.00am - 8.15am	Arrival and Health Check, Breakfast
8.15am – 8.30am	Dedicated Reading Time
8.30am – 10.30am	Outdoor Holiday Activity / Free Play Activity / Modular Activity
10.30am to 11.00am	Morning Snack
11.00am to 12.00pm	Indoor Holiday Activity / Free Play Activity / Modular Activity
12.00pm to 2.30pm	Lunch and Wipe Down Rest Time
2.30pm to 3.30pm	Indoor Holiday Activity / Free Play Activity / Modular Activity
3.30am to 3.45pm	Afternoon Snack
3.45am to 4.45pm	Outdoor Holiday Activity / Free Play Activity / Modular Activity
4.45pm to 5.00pm	Dedicated Reading Time
5.00pm to 7.00pm	Outdoor / Indoor Free Play / Reflection / Quiet Time / Dismissal

\*Outdoor activities can only be conducted before 10.30am and after 3.30pm

# BREAKFAST & TEA BREAK



## CLS KCare @ Gongshang Primary School Breakfast, Tea Break & Fruit Menu

Breakfast (KCare AM) : 8am to 8.30am  
Tea Break (KCare PM) : 2.30pm to 3pm

	Monday (1)	Tuesday (2)	Wednesday (3)	Thursday (4)	Friday (5)
Week 1 & 3	Assorted Cereals with milk  	Assorted Sunshine Buns 	Oatmeal with Milk 	Assorted Sunshine Buns 	Steamed Mantao 
Week 2 & 4	Assorted Cereals with milk  	Assorted Sunshine Buns 	Oatmeal with Milk 	Assorted Sunshine Buns 	Steamed Red Bean Pao 
Fruits	Apples 	Bananas 	Watermelon 	Banana 	Papayas 

# BREAKFAST & TEA BREAK



## CLS KCare @ Gongshang Primary School Breakfast, Tea Break & Fruit Menu School Holidays

	Monday (1)	Tuesday (2)	Wednesday (3)	Thursday (4)	Friday (5)
<b>Breakfast</b> (8am to 8.45am)	Assorted Cereals with milk 	Oatmeal with Milk 	Assorted Cereals with milk 	Oatmeal with Milk 	Assorted Cereals with milk 
<b>Morning Snacks</b> (10am-10.15am)	Steamed Mantao 	Steam Red Bean Bun 	Steamed Mantao 	Steam Red Bean Bun 	Steamed Mantao 
<b>Tea Break</b> (2.30pm-3pm)	Sunshine Buns (Cookies & Cream) 	Sunshine Buns (Chocolate) 	Sunshine Buns (Strawberry) 	Sunshine Buns (Butter & Sugar) 	Sunshine Buns (Cheese) 
<b>Fruits</b>	Apples 	Bananas 	Watermelon 	Bananas 	Papayas 



# LUNCH MENU (SAMPLE)

	Monday	Tuesday	Wednesday	Thursday	Friday
<b>Week 1</b>	White Rice, Braised chicken with Lotus seed and Cauliflower with Corn in Superior stock	Braised Kway Teow, Minced Chicken Mixed Vege in Veg.Oyster Sauce and Cabbage in Fragrance Oil	Corn Rice, Teriyaki fish, and Stir-fried small c. cabbage with Sliced Mushroom	White Rice, Braised chicken (Taiwanese) and Long Cabbage with Wolfberries in Veg Oyster Sauce	Chicken Rice, Sweet & Sour Chicken and Braised Broccoli with Diced Carrots
<b>Week 2</b>	White Rice, Stewed Button Mushroom Chicken and Grilled Corn	Spaghetti, Minced Chicken in Tomato Sauce and small C. Cabbage in Fragrance Oil	Corn Rice, Sweet & Sour Fish, and Stir-fried Broccoli with Sliced Mushroom	White Rice, Fish in BBQ sauce and Cabbage with Wolfberries in VegOyster Sauce	Chicken Rice, Stewed Minced Chicken with Potatoes and Braised Long Cabbage with Diced Carrots
<b>Week 3</b>	White Rice, Char Siew Chicken with Kow Peck Chye and Corn in Superior stock	Stir-Fried noodles, Minced Chicken in Tomato Sauce and Cauliflower in Fragrance Oil	Corn Rice, Cereal Chicken, and Stir-fried Broccoli with Sliced Mushroom	White Rice, Black Sauce Fish, and Broccoli with Wolfberries in VegOyster Sauce	Chicken Rice, Minced Chicken in teriyaki Sauce and Braised Cabbage with Diced Carrots
<b>Week 4</b>	White Rice, Braised Chicken with Onion with Long Cabbage and Corn in Superior stock	Braised Kway Teow, Minced Chicken Mixed Vege in Veg.Oyster Sauce and Cabbage in Fragrance Oil	White Rice, Stewed Button Mushroom Chicken and Stir-fried Kow peck Chye with Sliced Mushrooms	White Rice, Sweet & Sour Fish, and Broccoli with Wolfberries in VegOyster Sauce	Chicken Rice, BBQ Sauce Chicken and Braised Small C. Cabbage with Diced Carrots
<b>Week 5</b>	White Rice, Stewed minced chicken with Potatoes, and Broccoli with Corn in Superior stock	Braised Bee Hoon, Cereal Fish and Cabbage in Fragrance Oil			

# CATERER CERTIFICATION



# SUGGESTED PACKING LIST

- 1) One set of MK uniform and undergarment
- 2) Zip lock bag / wet bag for wipe down  
(advisable for 1 bag is for clean clothes, 1 bag is for soiled clothes)
- 3) Small face towel
- 4) Water bottle with sling

All belongings should be labelled with your child's name accordingly





# CUBBY HOLE

Measurement is 30cm x 30cm



# SCHEDULE FOR FIRST 2 DAYS OF SCHOOL

For K1 children enrolled in MK in the morning:

Time	Venue
8.00 to 9.30am	MK
9.30 to 11.00am	KCare

For K1 children enrolled in MK in the  
afternoon:

Time	Venue
1.00 to 2.30pm	MK
2.30 to 4.00pm	KCare

MK and KCare schedule for K1 and K2 children remains unchanged from Day 2 onwards.

# KCare SCHOOL FEES

## Monthly Fee in 2024:

Singapore Citizen	Singapore Permanent Resident (SPR)
<b>\$185</b> <b>(Fee after \$150 basic subsidy)</b>	<b>\$335</b>

**Please take note:**

-Initial payment will be **\$520 for Singaporean**

-Initial payment will be **\$670 for Non Singaporean / Singapore Permanent Resident**

**(Payment accepted by QR Code / Nets Only)**

**CDA is allowed for the first initial payment (appointment basis only)**



**Breakdown of Initial payment school fees:**

**1<sup>st</sup> month school fees: \$185**

**Deposit: \$335**

**Subsequent month school fees payment: CDA Nets / GIRO / QR Code**



# KCARE Fee – Subsidies Tier

## Subsidies are provided by MOE in 2 tiers:

- Basic Subsidy: All SC children are eligible for and automatically given a Basic Subsidy of \$150 per month.
- Additional Subsidy (applicable only if KiFAS application is successful upon separate application): Tiered according to Household Income (HHI) for SC children provided they meet the following criteria:
  - a) The mother/single father of the SC child is working at least 56 hours a month; and
  - b) The family's total monthly HHI is no higher than \$12,000 or the Per Capita Income (PCI) is no higher than \$3,000. Note that MOE will take reference from the approved ECDA KiFAS for this assessment.

Note: The child must attend at least 1 day of KCare to qualify for the monthly subsidies.

# KCARE Fee – Subsidies Tier

## How do I apply?

- Application forms are available at the KCare centre
- Parents are required to return the completed form **to MOE through your child's KCare centre**
- MOE will inform you of the application outcome through your KCare centre

Note: KCare Additional Subsidy is **administered by MOE**. This is provided in addition to the Basic Subsidy. It is meant to provide additional financial support for Singaporean children who are enrolled in our KCare and household income meets the income criteria.

## What should I do if there is a change in my household financial circumstances or working status?



- You should **re-submit your KCare Additional Subsidy application to MOE through your child's KCare centre** as soon as possible
- Should you need to extend the period of the Additional Subsidy, please **submit a new application to MOE through the KCare centre**, with updated supporting documents

# KCare Subsidy Eligibility Checker

- You may use the KCare Eligibility Calculator on the MOE Internet to check whether your child is eligible for the additional KCare subsidy:  
<https://moe.gov.sg/preschool/moe-kindergarten/kindergarten-care>

## KCare subsidy eligibility checker (applicable for SC child only)

An additional subsidy is also provided and this is tiered according to income levels. Enter the details to check whether your child is eligible for the additional subsidy:

 My monthly household income is  

There are  people in my household.

I am a working mother or single father of my child.

**SHOW ME MY OPTIONS**





# Communication

We encourage and appreciate frequent communication between the KCare operator and parents.

We can be contactable via:

**Email: [admission\\_cls\\_gsps\\_kcare@commitlearning.com.sg](mailto:admission_cls_gsps_kcare@commitlearning.com.sg)**

**Call or WhatsApp: 8835 1339**

**Operating hours:**

Monday to Friday: 7am to 7pm



Thank You!