

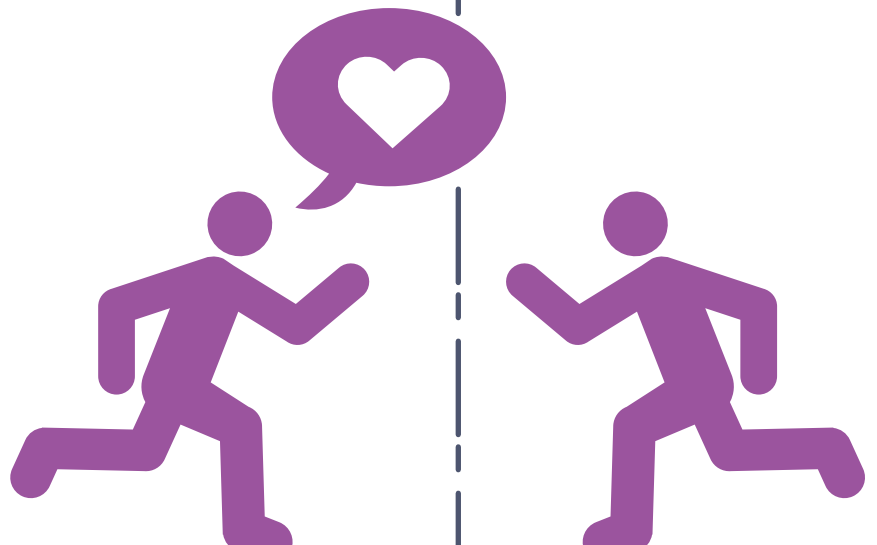
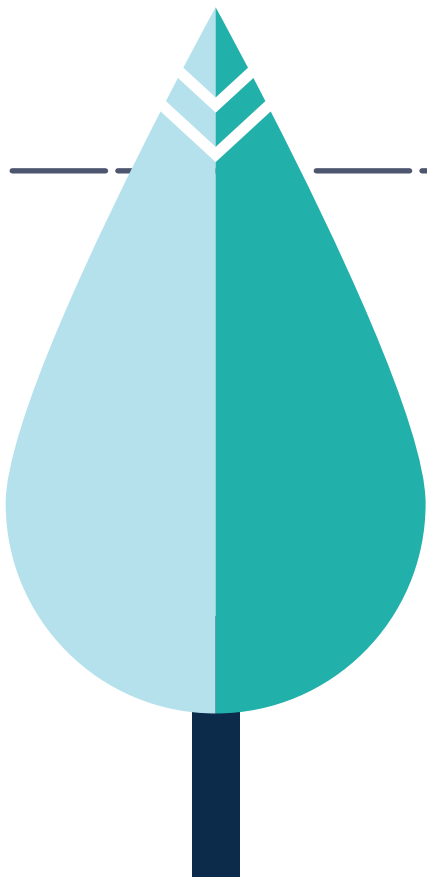


# cdc care

We Care

*Community Development Councils*  
Annual Report

FY2013





## mission



To Assist the Needy, Bond the People and Connect the Community.

### **ASSISTING THE NEEDY**

To help the less fortunate through local assistance schemes and programmes.

### **BONDING THE PEOPLE**

To bond the community through projects and programmes to bring them closer to one another.

### **CONNECTING THE COMMUNITY**

To develop strategic partnerships with corporate and community partners to better serve our residents.

---

## contents



**08** / Strengthening Social Support



**14** / Caring for the Silver Community



**18** / Promoting & Integrating Community Health



**22** / Championing Environmental Responsibility



**26** / Promoting Volunteerism



## Chairperson Dr Amy Khor's Message

The CDCs were formed in 1997 to help strengthen community bonds and build a more caring and cohesive society. In 2001, the administration of the national social assistance scheme was decentralised to the five CDCs to make it easier for residents to access assistance. This decentralised approach has worked well. In July 2013, this structure has been further decentralised with the setting up of 20 Social Service Offices (SSOs) by the Ministry of Social and Family Development. This has made it even more convenient for residents to access assistance.

With the return of the national social assistance scheme to the Ministry, the CDCs will continue to carry on with the mission of Assisting the Needy, Bonding the People and Connecting the Community at the District level. The CDCs will redouble their efforts in working with community and corporate organisations on assistance programmes such as transport, meals and food vouchers, bursaries and free tuition for students at the local level to further strengthen the social safety net. The CDCs will draw on the support and participation of an increasing number of corporate organisations and their employees to compliment the efforts of the grassroots organisations. Together the CDCs have initiated more than 100 local assistance programmes for the benefits of some 92,500 residents this year.

Despite the 8 per cent decline in overall corporate donations in Singapore, the five CDCs still saw an increase in donations. The two biggest sponsorships, pledged in October and November 2013, were from the Serial System Limited and Zhi Zhen Tan Dao Xue Hui (Singapore) which jointly donated \$2.25 million over three years; and from Dr Tor Lam Huat, founder of Ginvera, who gave \$1 million to the five CDCs. In all, the donations received by CDCs increased to almost \$11.8 million up from \$10.8 million in FY2012.

On the whole, CDCs have increased and deepened their outreach by connecting the 3Ps (Public, Private and People) in FY2013. For instance, the engagement with corporate partners rose to 588, a 6 percentage point increase. The number of volunteer-initiated projects also grew by about 10 per cent to 566. To support efforts in deepening resident engagement, CDCs continued to focus on building the capacity and capability of interest groups. In FY2013 alone, over 1,100 interest groups, a 3.5 per cent increase, were formed. These groups went on to attract over 145,000 members, or a growth of some 11 per cent.

CDCs have also proactively supported government agencies in their outreach to the community. In 2013, we worked with the Ministry of Health (MOH) and Agency for Integrated Care (AIC) to promote awareness of Community Health Assist Scheme (CHAS). To encourage entrepreneurship, we also partnered Spring Singapore to open a heartland-based Small and Medium Enterprise (SME) centre at each of the five CDCs.

Looking ahead, with the refined functions of CDCs (i.e. Aggregator, Builder and Connector), CDCs will continue to strive to rally the government agencies, more companies and their employees as well as other community organisations to support our local assistance programmes and community projects to uplift the lives of residents.

To all our District councillors, partners, sponsors, volunteers and residents, we thank you for your selfless contributions and continuous support. Let's work more closely together to strengthen our nation's heartware and emerge as a more close-knitted society.

**Dr Amy Khor Lean Suan**  
Chairperson, Mayors' Committee  
Mayor of South West District

## Governing Council



**DR AMY KHOR LEAN SUAN**  
Chairman of Mayors' Committee  
Mayor of South West District  
Chairman of South West CDC

**District:**

Chua Chu Kang GRC, Jurong GRC,  
West Coast GRC, Hong Kah North  
SMC, Pioneer SMC and Yuhua SMC



**MR TEO SER LUCK**  
Mayor of North East District  
Chairman of North East CDC

**District:**

Aljunied GRC, Pasir Ris-Punggol GRC,  
Tampines GRC, Hougang SMC and  
Punggol East SMC

### SOUTH WEST

Community Development Council  
The JTC Summit  
8 Jurong Town Hall Road #26-06  
Singapore 609434  
Tel: 6316 1616  
Fax: 6316 7250

### NORTH EAST

Community Development Council  
300 Tampines Ave 5 #06-01  
NTUC Income, Tampines Junction  
Singapore 529653  
Tel: 6424 4000  
Fax: 6424 4066

#### Vice Chairmen



**MR ARTHUR FONG**  
Member of Parliament for West  
Coast GRC, Adviser to West  
Coast GRC, Adviser to  
Clementi Grassroots Organisations



**MR ZAQY MOHAMAD**  
Member of Parliament for  
Chua Chu Kang GRC,  
Adviser to Keat Hong  
Grassroots Organisations



**MR ONG KIM HUAT, DAVID BBM**  
Member of Parliament for  
Jurong GRC, Adviser to Jurong  
GRC, Adviser to Jurong GRC  
Grassroots Organisations

#### Vice Chairmen



**MR MASAGOS ZULKIFLI BIN  
MASAGOS MOHAMAD**  
Senior Minister of State,  
Ministry of Home Affairs and  
Ministry of Foreign Affairs. Member of  
Parliament for Tampines GRC, Adviser to  
Tampines West Grassroots Organisations



**MR ZAINAL BIN SAPARI**  
Member of Parliament for Pasir  
Ris-Punggol GRC,  
Adviser to Pasir Ris East  
Grassroots Organisations



**MDM CYNTHIA PHUA**  
Executive Director,  
Retail Planning Consultancy  
and Research, Knight Frank Pte Ltd,  
Singapore Head Office



**DR. MOHAMAD MALIKI BIN OSMAN**  
Mayor of South East District  
Chairman of South East CDC

**District:**

East Coast GRC, Marine Parade GRC,  
Joo Chiat SMC, Mountbatten SMC  
and Potong Pasir SMC



**DR. TEO HO PIN**  
Mayor of North West District  
Chairman of North West CDC

**District:**

Holland-Bukit Timah GRC, Nee Soon  
GRC, Sembawang GRC and  
Bukit Panjang SMC



**MR SAM TAN CHIN SIONG**  
Mayor of Central Singapore District  
Chairman of Central Singapore CDC

**District:**

Ang Mo Kio GRC, Bishan-Toa Payoh  
GRC, Moulmein-Kallang GRC,  
Tanjong Pagar GRC, Radin Mas SMC,  
Sengkang West SMC and Whampoa  
SMC

**SOUTH EAST**

Community Development Council  
10 Eunos Road 8 #02-01  
Singapore Post Centre  
Singapore 408600  
Tel: 6243 8753  
Fax: 6243 3130

**NORTH WEST**

Community Development Council  
900 South Woodlands Drive  
#06-07 Woodlands Civic Centre  
Singapore 730900  
Tel: 6767 2288  
Fax: 6219 1176

**CENTRAL SINGAPORE**

Community Development Council  
HDB Hub Bizthree  
490 Lorong 6 Toa Payoh  
#07-11 (Lobby 2)  
Singapore 310490  
Tel: 6370 9901  
Fax: 6370 9928

**Vice Chairmen**



**MR SEAH KIAN PENG**  
Deputy Speaker  
Member of Parliament  
for Marine Parade GRC,  
Adviser to Marine Parade GRC  
Grassroots Organisations



**MS JESSICA TAN  
SOON NEO**  
Member of Parliament for East  
Coast GRC, Adviser to  
East Coast GRC  
Grassroots Organisations

**Vice Chairman**



**MR HAWAZI DAIPI**  
Senior Parliamentary  
Secretary, Ministry of  
Education & Ministry of  
Manpower. Member of  
Parliament for Sembawang  
GRC, Adviser to Marsiling  
Grassroots Organisations

**Vice Chairmen**



**DR LAM PIN MIN**  
Member of Parliament for  
Sengkang West SMC,  
Adviser to Sengkang West  
Grassroots Organisations



**MS DENNIS PHUA**  
Member of Parliament for  
Moulmein-Kallang GRC,  
Adviser to Kampong Glam  
Grassroots Organisations



**MR HRI KUMAR**  
Member of Parliament for  
Bishan-Toa Payoh GRC,  
Adviser to Bishan-Toa Payoh  
Grassroots Organisations

## About CDCs

At the CDCs, we believe in bringing out the big-heartedness of our community. After all, home is where the heart is, and we want to make this home a caring and better one for all. We hope to achieve this more effectively through the five areas of focus of our work. They are,

- ♥ **STRENGTHENING SOCIAL SUPPORT**
- ♥ **CHAMPIONING ENVIRONMENTAL RESPONSIBILITY**
- ♥ **PROMOTING AND INTEGRATING COMMUNITY HEALTH**
- ♥ **CARING FOR THE SILVER COMMUNITY**
- ♥ **PROMOTING VOLUNTEERISM**



### **STRENGTHENING SOCIAL SUPPORT**

A caring and compassionate home is where no one gets left behind. Thus, one of the CDCs' main areas of work is assisting the needy through customised local assistance programmes. We work closely with relevant government agencies as well as organisations on the ground such as Voluntary Welfare Organisations (VWOs), Grassroots Organisations (GROs) and residents to understand needs and challenges of the vulnerable within our population. The result is a team effort, where the more able of our society such as our volunteers and corporate partners chip in to help the less able.



### **CHAMPIONING ENVIRONMENTAL RESPONSIBILITY**

Mother Nature has given us a beautiful home and it is our responsibility to sustain it. The CDCs work relentlessly to spread the message of loving our environment through collaborations with our 3Ps partners. Through our green programmes, residents have been educated about the 3Rs – Reduce, Reuse and Recycle, dengue, the

haze and other public hygiene and environmental issues.



### **PROMOTING AND INTEGRATING COMMUNITY HEALTH**

A fit and healthy body keeps us happy! And the CDCs are strong advocates of a healthy lifestyle. A great example is our strong brisk-walking movement of 111,000 briskwalkers! With the CDCs' help, more than 650 Residents' Committees (RCs) and Neighbourhood Committees were able to set up their own walking clubs within the past three years. More holistic projects that focus on health and social integration as well as ground-up initiatives for our silver community were also carried out.



### **CARING FOR THE SILVER COMMUNITY**

In 2012, the CDCs initiated the 'Caring for the Silver Community' programme. This programme adopts a holistic approach to promote an active and healthy lifestyle amongst our elderly, strengthen assistance for vulnerable seniors and develop senior volunteerism. About 148,000

seniors were engaged, a notable 30% above the target of March 2013. We will continue to work with GROs and VWOs to assess the needs of our silver population and encourage more able residents and organisations to step forward as volunteers and corporate partners.



### **PROMOTING VOLUNTEERISM**

Every small effort makes a difference and the CDCs hopes that more Singaporeans are able to volunteer. Your help may just touch someone's life. With a wide range of social programmes, the CDCs hope to attract more people to join us as volunteers. To better engage our volunteers, we also develop more sustainable programmes, which will also benefit the beneficiaries more. Come join us in making a difference!



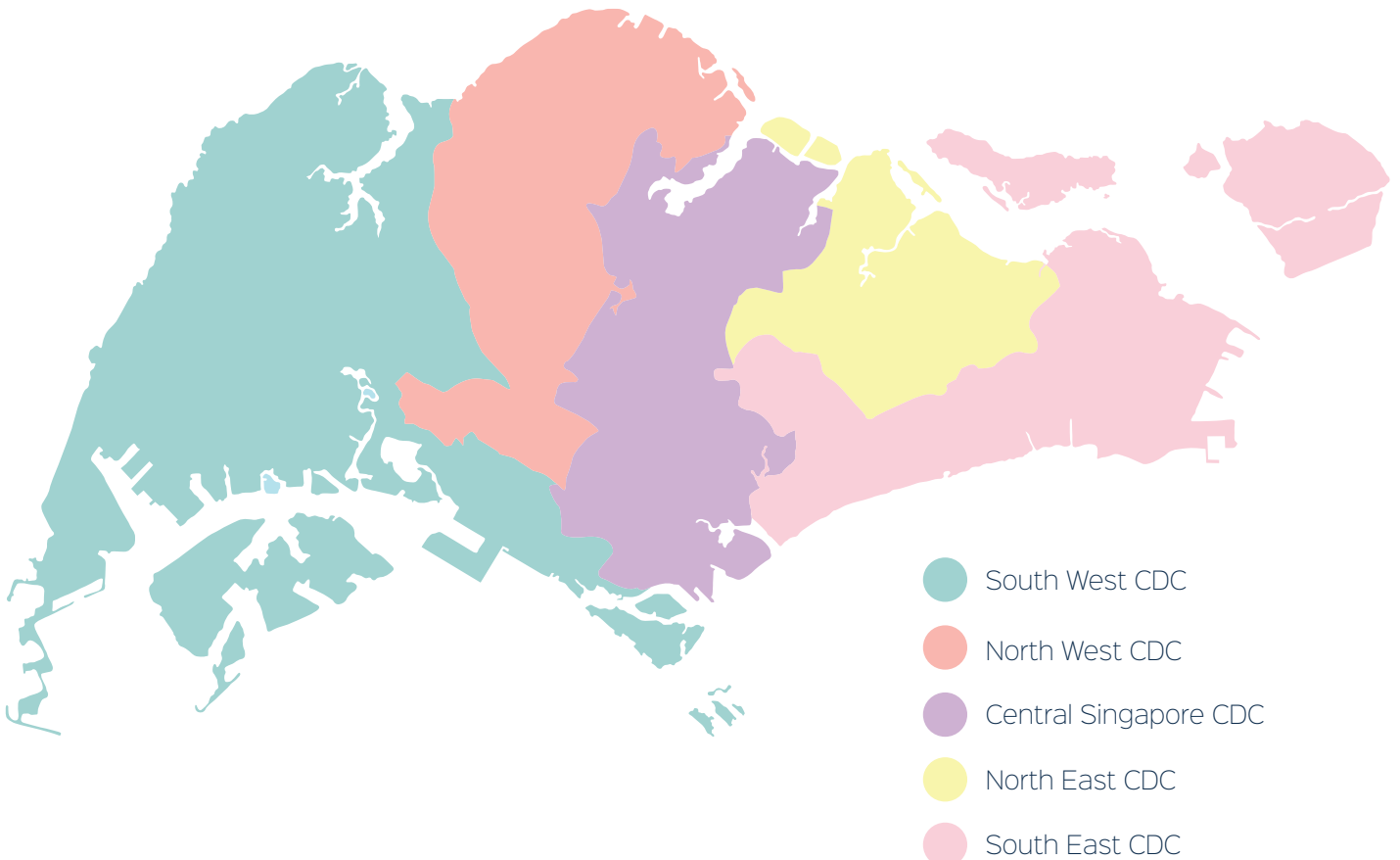
## CDCs' Evolving Roles

The CDCs' role are always evolving to better address Singaporeans' existing and emerging needs. They function as **aggregator**, **builder** and **connector** for the community.

The CDCs act as an **aggregator** through combining or consolidating government and community resources to better benefit residents. The CDCs take on the role of **builder** through building relationships and capabilities of our partners. The CDCs act as an **connector** through growing and strengthening networks and links between and amongst stakeholders.

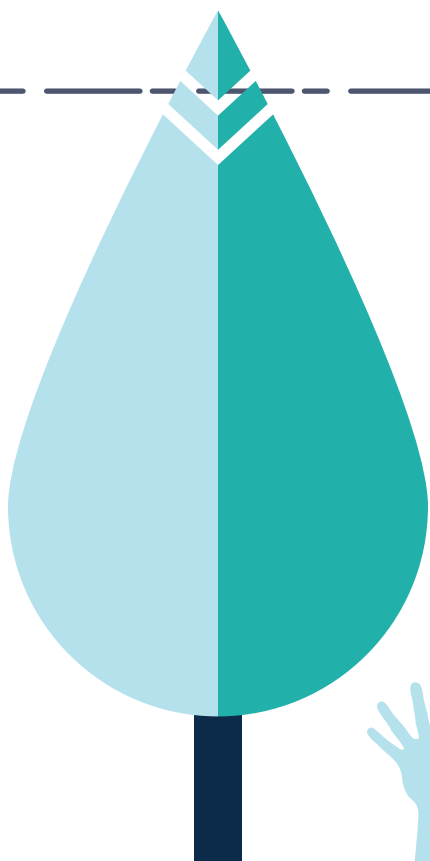
## The Map of the Five Districts

Find out which District you live in by entering your postal code here. ([www.cdc.org.sg](http://www.cdc.org.sg))





## Strengthening Social Support





## Central Singapore CDC StarHub-Central Singapore Nurturing Science Stars Journey

StarHub lighted the way for 170 aspiring young scientists from low-income families through an experiential discovery journey to the Science Centre Singapore. There, they got to learn more about science through interesting challenges. The outing was part of the StarHub-Central Singapore Nurture Programme.

Besides brain stimulation, both beneficiaries and staff volunteers from StarHub get to enjoy quality time with families and friends; the volunteers' families even joined in for the treasure hunt!

Under the Nurture Programme, Starhub sponsored \$250,000 to organise meaningful programmes such as the Science Stars Journey on a yearly basis. School holidays are especially fun as these needy children can look forward to exciting activities organised by StarHub's staff volunteers.

The CDC hopes that more organisations can step forward as our corporate partners to benefit the vulnerable in our society.



Learning in the Nurture programme is a lot of fun! I am happy that my English results have improved.

**KASNIRFIQAH BINTE MOHD KASMAN, 8**  
Participant of the programme



01



02



Children have so many talents, especially these days, but they just need a fertile environment to blossom. StarHub feels that the Nurture programme provides an experience that will help the children actualise their potential.

**MRS CHAN HOI SAN**  
Senior Vice President, Human Resources, StarHub



03

- 01 Picking up new knowledge on science together.
- 02 Mrs Chan and Mayor Sam Tan congratulating the champions of the challenge.
- 03 StarHub volunteer guiding the children in the science challenge.



01

## North East CDC Community Employment Programme

North East CDC collaborated with partners such as National Library Board (NLB) and Resident Committees (RCs) to provide interim employment to job seekers under the North East CDC Community Employment Programme (CEP). The objective of CEP is to raise the confidence and self-esteem of job-seekers, especially those who are re-entering the workforce. Launched in November 2011, the programme not only provides job seekers with a source of income but also sits well with potential employers. Interim jobs include Mobile Library Assistants, Café Corner assistants, town council customer service officers and other part-time administrative assistants.

The North East CDC will work with Work Development Agency (WDA) to assist these residents in their permanent job search concurrently during their CEP so that they can become self-reliant.



NLB is happy to collaborate with North East CDC on this initiative to reach out to readers and assist job seekers in the community. Our staff at Tampines Regional Library conducted a briefing for the mobile library cart assistants on different types of books suitable for different age groups. They will share their experiences on the management of library carts and the types of books for these carts.

**MS NGIAN LEK CHOH**  
NLB's Deputy Chief Executive



02

## Café Corners

With the emergence of Café Corners since April 2013, residents within North East District need not look further than their home's backyard for a comforting cup of coffee amidst good neighbourly company.

Nearly 50 Café Corners had sprung up across RCs, covering Tampines, Aljunied, Pasir Ris and Punggol. The void-deck drinks corners not only dispense free beverages, but also provide temporary work for job seekers who help man the café and prepare drinks, which would be paid for by the CDC and RCs.

## Mobile Library

Now getting a good read is not just convenient but will also provides interim work and financial independence to those who are in need. All thanks to the setting up of mobile library. All these is made possible as North East CDC and NLB work with Grassroots Organisations (GROs) to set up these mobile library kiosks at RCs.

Today, there are more than 10,000 residents who are registered borrowers under the programme and over 150 job seekers benefitted from this initiative. Next time you are in the vicinity, do look out for one of the 37 mobile library kiosks and carts in North East District.



03

01 Mayor Teo Ser Luck and our corporate partner, Derrick Goh, Head of POSB, visited our library assistants at the Sengkang Community Club's mobile library cart.

02 A café corner assistant attending to the elderly citizens who came to spend time at Compassvale Southgate RC.

03 This Mobile Library Cart at Sengkang CC carries some 800 to 1,000 books of different languages for residents' reading pleasure.



**North West CDC****WeCare @ North West – Ready for School programme**

Some 1,200 needy kindergarten children will be ready for primary school with WeCare @ North West – Ready for School programme. To prepare kindergarten students from low-income families for primary school education, North West CDC and NLB organised four Ready for School events to provide students with bursary and a parent-child reading workshop.

Started in end 2013, this initiative benefits children aged five to seven in the North West District, helping to level them up. Through the sessions, the CDC hopes to instil good reading habits and promote the love of reading through parent-child reading workshops.

The programme comprises three main segments.

First, a parent and child workshop is conducted by NLB. Through the workshop, parents were introduced with various techniques such as storytelling, songs and craftwork so that they could encourage their young children to read. Second, a \$150 bursary was presented to each kindergarten beneficiary to purchase education-related items. Third, youth volunteers engaged the kids in activities such as bookmark-making and mask-making to further cultivate their interest to read.

Together with North West CDC, NLB staff and youth volunteers (Youth Assembly, Young Leaders Committee) stepped forward to uplift the lives of the needy families. The \$180,000 bursaries were fully funded by private donations, tapping on the North West Food Aid Fund and North West Student Support Fund.



Organising Ready for School was a really enriching experience, because it was the first time I took on such a big role in a community project. Through the planning we grew as leaders, but my greatest takeaway from the process was really learning to interact with the community and helping the people around me. I'm glad I could have contributed in a way that brings warmth to our society!

**CHERIE POON**

Young Leaders Committee 12  
Chairman



01



02



03



- 01 North West Youth Volunteers bonding and guiding kindergarten children in doing craftworks to cultivate interest in reading.
- 02 Dr Teo Ho Pin, Mayor of North West District, presented educational bursaries to prepare kindergarten children for primary education.
- 03 Parent and children bond closer through reading and learning.

**South East CDC**  
**NTUC Income's Orange Aid**  
**South East Learning Family**  
**Programme**

Every child deserves an equal opportunity to learn, but not every family is blessed with the same resources. To address this gap, South East CDC started the NTUC Income's Orange Aid South East Learning Family Programme (LFP), designed to level-up the Primary One readiness of children from needy families. The programme was a spin-off from the Edu-Bridge Programme in 2007.

The programme is specially tailored to equip K2 students with a sound educational foundation. This includes improving their literary and numeracy standards as well as soft skills such as enhancing their self-confidence. What sets the programme apart, is its emphasis on learning as a family unit. To do so, parents are roped in to participate in the lessons so that the learning process can continue at home. This learning model not only encourages family bonding and help the parents themselves improve their English ability, but more importantly the children can now look up to them as good role models and competent coaches.

Since its inception, LFP has benefitted about 450 children and their families. Results has been very promising, with the children's reading and learning abilities in English showing marked improvements after attending the classes. To better benefit the students, the programme is now extended to K1 students so that learning can start at an early age.



01



02

01 Through the Learning Family programme, children get the opportunity to improve their literacy and numeracy skills to improve their Primary One readiness.

02 The programme encourages children to read through library visits.



## South West CDC South West ComCare Bursary

It is always a blessing to be able to give. Hence, when the Polytechnic students from low-income families receive their South West ComCare Bursary, they will also get the chance to pay it forward through involvement in grassroots projects that will benefit the community.

The South West ComCare Bursary is made possible through the generous donation of Koh Kock Leong (KKL) Enterprise Pte Ltd, which is matched dollar-for-dollar by the South West CDC. A total of \$1.08 million will be set aside over four years for this Bursary, with 540 bursaries, worth \$500 each, to be given out every year. The project hopes to spark off an interest in volunteerism among the bursary recipients and to encourage them to take ownership of the community they live in.



I feel happy volunteering in community events and programmes, as I know that I am making a difference in someone else's life. I believe this bursary will appeal to my fellow poly friends who are interested to contribute or work with community organisations to help others, but could not due to financial problems.

### KIERAN CHEANG, 19

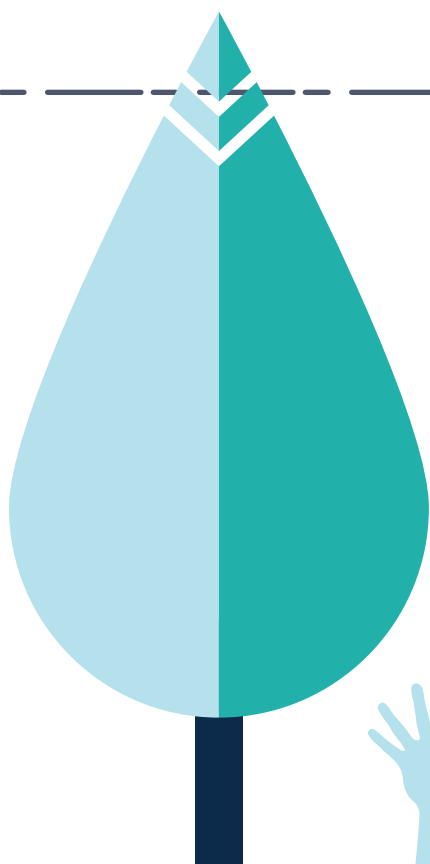
A student from Ngee Ann Polytechnic and has been an active volunteer with the CDC since 2011.



01



## Caring for the Silver Community





01

### Central Singapore CDC Launch of Project WeCare – Stop Bed Bugs @ Central Singapore

Nasty bed bugs can become one's greatest nightmare. And this nightmare gets worse for elderly living in poor conditions with little means to elevate the problem. Fortunately, with the launch of WeCare – Stop Bed Bugs @ Central Singapore in 2013, their bed bug woes will be put to an end, giving them a safe and clean living environment.

What started as a pilot initiative in Kreta Ayer and Kim Seng is now benefiting residents living in rental flats within the entire Central Singapore District. The CDC works closely with grassroots and the community to identify units plague

with bed bug problems and the programme now relies heavily on volunteers support from schools, corporate and community organisations to help with fumigation exercises.

The programme's \$300,000 budget is jointly funded by Central Singapore CDC and Project WeCare CEO Network. With the



03



02

donors' generous support, the residents facing bed bug problems can finally have a good night's rest.



The bed bugs came from my neighbour's flat about 15 years ago. When I am sleeping, they will bite my limbs and back. The discomfort is so great that I am unable to sleep. I signed up for the bed bugs fumigation programme with the SAC after hearing about it. Now, I no longer have to worry about being bitten by bugs at night.

**MR KOH CHONG WATT, 66**  
Beneficiary of Stop Bed Bugs @  
Central Singapore

01 The launch of the programme wouldn't have been possible without the help of our corporate and community partners and volunteers.

02 Student volunteers helping a resident with the packing of her belongings. The bed bugs programme is an eye-opening experience for most students, and provides a glimpse into the lives of residents living in rental flats.

03 Minister Chan Chun Sing, and Mr Sam Tan, then-Mayor of Central Singapore District, visiting the flat of one of the beneficiaries.



## North East CDC North East Senior Drama Academy

Meet the silver stars of the North East Senior Drama Academy. The folks get together regularly to attend acting classes and even made their debut on stage with a skit at the North East Senior's Camp. A North East CDC initiative, the programme aims to provide creative avenues for seniors to share their life experiences and to encourage active ageing.

**MR RMDZAN MASLAN** is an 86-year-old bachelor who lives on his own in Tampines. A former aircraft technician, he is now the go-to handyman in the neighbourhood. Nicknamed Mr Joko, he often volunteers to fix his elderly neighbours' choked sinks and broken electrical items.

Now, this trusted handyman has fell in love with a new interest and avenue to make new friends – North East Senior Drama Academy. Elderly participants who signed up for the Academy's acting classes realised their dream of performing on stage recently. They debuted at the North East Seniors' Camp with a skit, giving a glimpse into their own lives as a silver community. Mr Joko played a photographer, capturing images of what he observed around him.

A regular at the North East Senior Drama Academy, Mr Joko is often seen enjoying acting classes. He bonds well with everyone and has gained many friends. Mr Joko



03

shares that being in contact with his mates through such activities serves him well. The group will meet twice a week to have potluck lunches, play board games at Supermind Club, another initiative by North East CDC which encourages the elderly to harness their minds through games and reading. He says meeting the silver community regularly makes him happy. "I don't have time to dwell on negative thoughts, I use the time I have by interacting with others and I'm happy it is time well spent at this age."







01



### North West CDC WeCare @ North West - RC Open House for Seniors

Picture our dialect-speaking grandparents showing off English to that new neighbour. That just might become reality with WeCare @ Bukit Panjang programme. To better cater to the needs and interests of our ageing population, North West CDC started WeCare @ North West - RC Open House for Seniors across the North West District. The purpose of the event is to customise and enhance the social support and community programmes as well as physical infrastructure that can better meet the seniors' needs and interest. At the event, community courses suitable for the seniors were also introduced to them. For example, the CDC partnered with Workforce Development Agency (WDA) to introduce the Basic English course so that our seniors can be able to converse comfortably with neighbours and friends of other ethnic groups. At the same time, enhancing their employability with the attainment of the course certificate.

The highlight of the event is the Town Hall Forum, chaired by the local grassroots Adviser. It is a platform that brings the different government agencies together under one roof so that seniors can better understand the various government scheme or programmes available to them, and encourage sign ups where applicable. Agencies such as Agency for Integrated Care (AIC) and HDB were invited by the CDC to give presentations to the elderly on current policies such as Community Health Assist Scheme (CHAS), Seniors' Mobility and Enabling Fund (SMF) and Enhancement for Active Seniors (EASE Direct). The policies and topic are useful for seniors and this programme provide a platform for the seniors to understand more about the scheme.

Feedback on the needs and interest of the seniors were also garnered from survey forms. This would enable the CDC to help GROs better engage their senior residents.

01 Mayor of North West District Dr Teo Ho Pin together with representatives from AIC, HDB and North West CDC hosting the Town Hall Forum.





## South East CDC Community Outreach Programme for the Elderly (COPE)

The Community Outreach Programme for the Elderly (COPE), aims to enhance the well-being of the elderly within South East District.

With funding support from the CDC, 10 COPE Teams have been set up by nine VWOs, with over 900 volunteers serving nearly 4,600 eldering staying in 1 to 3-room

flats. Each COPE Team is based around a centre to engage the senior residents with a variety of activities such as excercises, basic English and Chinese courses, karaoke, bingo and art & crafts.

The elderly themselves are roped in to organise their own programmes through 26 interest groups. Armed with a small budget, the more able elderly can reach out to their fellow mates better and gain confidence in the process.



01



02

01 The Senior Learning Camp is an example of an elderly-centric activity organised by a COPE Team.

02 Elderly participants also have opportunities to bond with other participants in COPE activities.

## South West CDC Launch of South West Active Ageing Bursary

The South West Active Ageing Bursary proves that one is never too old to learn and give back to society. South West CDC introduced the first-ever \$600,000 bursary to benefit 1,000 lower income elderly residents per year over a span of three years.

South West CDC hopes to promote social integration and senior volunteerism through the bursary incentives. Each beneficiary will receive \$200 worth of vouchers per year that can be redeemed when they enrol in elderly-friendly courses and programmes held by Community Centres/ Clubs (CCs). As part of the bursary requirements, beneficiaries will have to volunteer in at least three community events within a year of the award of the bursary.

The bursary is co-funded by electronic component distributor Serial System,

Taoist charity Zhi Zhen Tan Dao Xue Hui and the South West CDC WeCare Fund. Giving back to the community has always been at the heart of Serial System and of Zhi Zhen Tan Dao Xue Hui (Singapore).



Senior citizens have contributed much to the nation's growth. We hope that the silver community will benefit from the Bursary, encouraging them to lead an active and healthy lifestyle, and at the same time, forging a stronger and close-knit community.

**DR DEREK GOH**  
Executive Chairman and  
Chief Executive Officer of  
Serial System



I would like to visit old folk's homes or orphanages to help out.

**LEE NGAK WEE, 76**  
Retired forklift driver Mr Lee, is looking forward to helping the less fortunate.



01

01 Vulnerable seniors are encouraged to be active in the community by tapping the South West Active Ageing Bursary for social activities organised at their nearest Community Club and Residents' Committee Centre.



## Promoting & Integrating Community Health







## Central Singapore CDC

### Walk & Roll 2013

Some 1,300 participants Walk & Roll to raise funds for milk powder, which went to 250 needy children in the Central Singapore District.

Walk & Roll 2013 is a collaboration between the CDC and Singapore Rollersports Federation (SRF) to foster intergeneration bonding through a mass sporting event. Each participant walked or skated at least 2km to fund the purchase of milk powder for disadvantage children. Everyone had a rolling good time and through partnership with the Singapore Rollersports Federation, the event reached out to a broader range of participants.



01 Mothers rolling along with prams in tow toward a common cause.

02 Skaters included students from rollerblading CCAs in tertiary institutions, who came together to support the cause.

03 Young and old came together as families and friends to contribute to the less able in our community.



It brings me joy whenever I meet these seniors that greet me with open arms and share with me on their well-being. Knowing that they are receiving help from the community and part of this CARE Team programme, is heartwarming.

#### PHYLLIS TNG

CARE Team Befriender who visits the seniors regularly



I don't really get out of my house due to my medical condition. I always look forward to the volunteers visiting me once a week to chit-chat with me.

#### MR LEONG KOK HONG

Elderly beneficiary



01

#### North East CDC North East CARE Team

Our North East CARE Team is on a mission to bring love and care to vulnerable elderly residents. Made-up of volunteers such as students as well as fellow seniors living nearby, this group of befrienders took it upon themselves to provide emotional and practical support for isolated seniors by befriending them and participating in activities with them such as conducting handicraft sessions at the seniors' homes.

In order to serve the beneficiaries better, North East CDC linked up with partners such as the ministries and hospitals to provide training for the CARE Team. Armed with more resources, the befrienders can then help these elderly folks more holistically, ensuring the sustainability of the programme.

The North East CARE Team is about getting the more able to help the less able. It encourages the more able residents to give back to the community by caring for these isolated seniors. It also provides a better social support network for these seniors.



02



01 Students carrying out activities with the seniors, as part of the befriending program.

02 Befrienders training, at Tan Tock Seng Hospital. Getting to know the hospital's health coordinators. The health coordinators will be the one following up the cases.



**North West CDC****North West Brisk Walk Expedition**

Following the success of North West 100km Brisk Walk Challenge, the North West Brisk Walking Club (BWC) raised the game yet again with the introduction of North West Brisk Walk Expedition – a series of brisk walk expeditions to scenic areas around Singapore.

Residents were treated to beautiful sceneries as they walked from Punggol Point Park to Lorong Halus, along West Coast Park, from Rail Mall to Bukit Timah Hill and along Ulu Pandan Park Connector. Besides bonding with fellow residents, the BWC members enjoyed these monthly walks to places less travelled. Resident Mdm Sarimah Bte Daud said, “The walk is very good, different routes every month makes it interesting.”

This innovative project is developed based on feedback from participants from the North West 100km Brisk Walk Challenge in FY2012 with the aim of engaging the Club's fitter members.

In addition to keeping our residents fit, the expeditions also promotes volunteerism as many members selflessly gave up their own opportunities to participate in the walks and served as road marshals instead. One such volunteer is Mr Chang Hiang Mong, who played a significant role behind the success of the project. “This programme by North West CDC is a good initiative and allows residents to walk in various places. Our brisk walkers are also engaged as CDC volunteers to ensure the safety of participants by serving as road marshals,” shared Mr Chang.



Residents are happy to be able to explore outside the neighbourhood and are always excited and looking forward to the next walk. This project helps to keep up their interest in brisk walking and helps them to keep healthy.

**MR JAMES TAN**

To BWC coordinator Mr Tan, his hard work meant nothing as long as his members are satisfied.

**139 BRISKWALKING CLUBS**

**69,000 MEMBERS**



01



02



- 01 Participants young and old posing for a group photo with volunteer after successfully making their way to the summit of the Bt Timah hill, a total of 4km walk and a climb up to a height of 163m.
- 02 Even though it started drizzling during the walk and the ground was wet, nothing could dampen the mood of the brisk walkers there to kick off the first walk!

## South East CDC Neighbours for Active Living (Neighbours)

There is a Chinese saying that a distant relative is no better than a good neighbour. Hence, the South East District's vulnerable seniors residing in Bedok, Siglap and Marine Parade can now depend on Neighbours. Neighbours is a ground-up initiative proposed by Eastern Health Alliance (EHA), supported by South East CDC, VWOs, GROs and community partners targeted at seniors with high care needs.

EHA identified that many chronically ill seniors were frequently admitted to hospital. Many of these cases were relapses or have worsening medical conditions upon their last discharge. EHA found that the causes include a lack of knowledge on long-term care services and inadequate social support in the home and community that caused repeated admissions. For instance, some patients' homes were badly hoarded or the toilets were slippery, resulting in mobility issues and frequent falls.

These findings prompted EHA to approach South East CDC to co-pilot a health-social integration initiative – Neighbours for Active Living.

The project established a comprehensive healthcare tracking system managed by the resident volunteers, taking priority to serve seniors with high care needs; strengthened linkages between health, social and community partners; and empowered residents with knowledge, skills and resources to look after themselves and one another.

The success of Neighbours hinged greatly upon the volunteers. Hence able-bodied resident volunteers were engaged and trained to build up their capabilities as befrienders, medical escort or for caregiving and respite care services.



“I often forget to go for follow-up medical appointments, but now a volunteer is there to remind me to go for the appointments.”

**MR TAN, 66**  
Beneficiary of Neighbours for Active Living



To increase our duration of visits to her, maybe on alternate days or three times a week. This kind of visit is to keep the patient up and about, because this is the time when they are alone. So when people come and visit you, even for a short while, I think it helps to boost up their morale. At least they know that someone cares for them.

**MONICA MA**  
Volunteer, Friend A Senior Programme relating her experience as befriender and escort for a 79-year-old senior



- 01 Mayor of South East District Dr. Mohd. Maliki Osman (left) visits Mdm Wong (right) with Friend A Senior Programme Volunteer Ms Monica Ma (centre)
- 02 Mr Gerard Ee (left), Chairman of Eastern Health Alliance, signs on the memento with Mayor of South East District Dr. Mohd. Maliki Osman (right) to officiate the launch of Neighbours for Active Living.



## South West CDC Integrated Health Screening @ South West

What started as a local scheme – project eye wear: an initiative that helped needy residents to afford eyewear – expanded into a holistic resident-centric health screening programme. South West CDC enlisted the support of corporate and community partners to provide subsidised health screenings.

The result is Integrated Health Screening @ South West, a fully subsidised health screening for lower income families which includes dental health screening, diabetic foot screening, mammography as well as chronic disease, eye and ear screening. The CDC also coordinated post screening follow-up services by health care professionals and senior befrienders.



As we get older, we have to take additional care of our health and body which is why I will be going for my first breast screening. I know it can be quite uncomfortable but it would be better than to have discovered something wrong later. Prevention is always better than cure.

**MDM SUNDRA AMBAL, 53**  
Beneficiary of Integrated  
Health Screening @ South West



I did not purchase hearing aids as it would cost me more than \$1,000 from the shops. This is close to a month of my family's income. It will be a great relief to get the hearing aids so I can better communicate with my family and friends

**MR ABDUL SAHID, 82**  
Beneficiary of Integrated  
Health Screening @ South  
West



01



02




03



## Championing Environmental Responsibility





Each of the five CDCs have their own sustainable environmental programmes, in partnership with local GROs, to promote environmental awareness and a more environmentally responsible way of life. The CDCs take turns to co-organise the annual launch of the Clean and Green Singapore programme with National Environment Agency (NEA) to inspire all Singaporeans to care for and protect the environment.



01

### Central CDC

#### S.W.I.T.C.H with Maybank @ Central Singapore finale

Doing a part for our environment can begin from small acts, such as changing a light bulb. Central CDC teamed up with Maybank Singapore and National Environment Agency (NEA) for the S.W.I.T.C.H with Maybank @ Central Singapore programme. Volunteers from Maybank, NEA, grassroots leaders and students reached out to more than 3,600 low-income households to educate them about the importance of energy efficiency and helped them lower utility bills by switching their light bulbs to energy-saving ones.

The collaboration saw 4,000 energy-efficient lightbulbs being installed over three years. This feat was completed before the targeted completion date as more volunteers stepped forward to help.



02

As part of their Corporate Social Responsibility (CSR) initiatives, Maybank Singapore also donated \$30,000 to fund the cost of the energy-saving lightbulbs.



S.W.I.T.C.H with Maybank is one of the ways that we incorporate CSR into our business. It is important to ensure that CSR is a core part of our operations ... and we are heartened by the strong support from our customers for this initiative. Playing our part for the environment can be really simple, like switching to online statements, or just changing the lightbulbs.

### MS CORRINNE TAN

Head, Corporate Affairs,  
Maybank Singapore

01 Student volunteers changing the light bulb for a low-income family.

02 Minister for Defence and Grassroots Adviser to Bishan-Toa Payoh GROs Dr Ng Eng Hen helps a resident make the switch to an energy-saving light bulb. (2013)

## North East CDC Eco Kids: Just One Earth

One is never too young to be a Eco hero to protect our Earth! The North East CDC has set out to educate our little heros from as young as pre-schoolers on the importance of protecting the environment. They are encouraged to do this with their families through fun and hands-on recycling and up-cycling activities. The

children get to plant seeds and explore the wonders of nature through feeling and learning through soil.

North East CDC saw the need to focus on the four key areas mainly, cleanliness, waste management, water conservation and resource conservation as they are the four major environmental problems that Singapore is facing. Focusing on a resident-centric approach, North East

CDC encourages residents' participation in re-cycling and up-cycling activities. This allows closer interactions amongst residents during such activities. North East CDC also help empower residents to take ownership of their environment through educating residents on the benefits of recycling and up-cycling and sustaining the environment.



01



The programme is packed with meaningful activities that engage the children's hearts, minds and hands.

**JOSHUA**  
Parent of a participant



Generally, the programme was designed with good intentions of reaching out to the children, so as to share with them about the green initiatives they can start at home.

**XU HONG**  
Volunteer



02

01 A participant recycled a plastic bottle as a holder for his plant.

02 Seniors participating in a 'Do-It-Yourself' workshop where they learn to make handicrafts out of recyclable items to promote Eco-friendliness.



### North West CDC Mozzie Free Homes @ North West

A joy-filled holiday can turn into a nightmare if we leave breeding grounds for dengue mosquitoes when we are away. Mozzie Free Homes @ North West was conceived due to the sharp rise of dengue cases, and in anticipation of the 2013 June school holidays when many families might go on holidays. Held in May 2013, the event

served as a timely reminder for residents to mozzie proof their homes before leaving.

The event was carried out as a joint effort between CDC, students, NEA, GROs and tour agencies. Grassroots leaders and students organised talks and conducted house visits to 20,000 households to spread dengue prevention messages to residents while travel agencies reach out

to their customers and reminded them to do the mozzie wipe-out before leaving for their holidays.

Corporate partner NATAS supported the mozzie free initiative and encouraged its members to help in the battle against dengue.



01



Agents who are proactive and believe in the welfare of their clients will take up this initiative. We will have to do our part to assist in the Government's initiative.

**MS PATRICIA AUYEONG**  
NATAS, Acting Chief Executive

## South East CDC Heartland E-waste Recycling Programme

The amount of electronic waste or e-waste grows as Singaporeans' spending power increase. However, e-waste are often not disposed of properly and this could lead to hazardous materials leaking into our environment and wastage of valuable and previous electronic materials like tin, silicon and a variety of plastics.

The Heartland E-waste Recycling Programme was launched to provide a hassle-free avenue for proper recycling of home appliances and e-waste items. The programme was initiated by Panasonic Asia Pacific, in partnership with South East CDC, NEA, electrical and electronic retailer BEST Denki, e-waste recycler Cimelia, and public waste collector Sembwaste.

Residents were able to recycle their e-waste items and general recyclables at 10 selected RC Centres and earned up to 6,000 energy-efficient light bulbs for residents in rental units in Marine Parade and Mountbatten.



01



02



It was a great experience for me to be part of this important and meaningful programme. Seeing the residents take ownership and responsibility of e-waste recycling also motivated me to spring-clean my house and recycle my electronic gadgets that are no longer working.

**MS JOELLE CHIN**  
Volunteer, Panasonic Asia  
Pacific Pte Ltd



03

- 01 Student volunteer engaging a resident during a house visit.
- 02 Volunteers from NUS engaging a resident to find out his needs and requirements.
- 03 Volunteers helping out at the RC collection drive.

## South West CDC

### Recycle-A-Bulb @ South West

South West residents killed two birds with one 'bulb' simply by recycling their used light bulb. Recycle-A-Bulb @ South West aims to promote an eco-friendly lifestyle and caring community. Every used light bulb residents recycled will benefit a low income household as the family will receive a brand new energy-efficient light bulb. Recycling helps residents to save on the cost of new light bulbs too as they can purchase a new energy efficient light bulb at cost price.

South West CDC partners GROs, General Electric Lighting and Global Lamp Recyclers Pte Ltd, to roll out this ethical and environmental recycling of light bulbs, as part of the District's drive towards environmental sustainability.



With this programme, residents can now recycle their used light bulbs by depositing them at 30 RC Centres/CCs which are equipped with light bulb recycling bins. The programme is much more meaningful now as not only can you do your part for the environment, you could also help the less-fortunate in the community. I am happy to have my fellow GRLs come onboard in this good cause.

**MR TAN KIN TEO, BBM**

Hong Kah North Zone 6 Vice Chairman



It is interesting that recycling can be a meaningful act. We normally throw used light bulbs away. Now, with this new recycling programme, I know that when I recycle my used light bulb, I am helping to save our environment, and more importantly, helping a family in need save costs.

**HISYAMUDDIN BIN OSMAN**

Resident

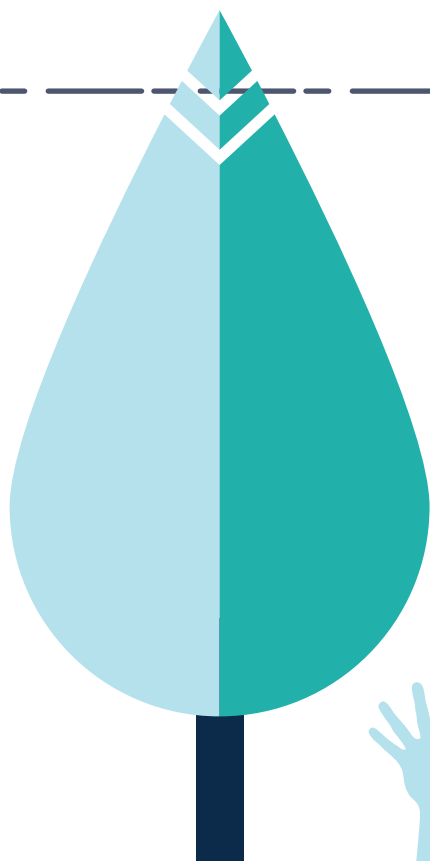


01 South West District residents recycling for a greener and cleaner South West by trading their recyclables and e-waste at the annual Trash-for-Groceries recycling programme.

02 Mayor Khor and volunteers helped spread green messages amongst residents.



## Promoting Volunteerism





### Central Singapore CDC Launch of the Imagine! Community Action Network Programme

Central Singapore CDC invites youths to put their imagination to benefit others and give back. Through the Imagine! Programme, youths are empowered to initiate their own community projects that will benefit residents in the Central Singapore District. The youths will be assisted with funding of either \$2000 for small-scale projects or up to \$10,000 for large-scale projects along with mentoring support as well as link-ups with the CDC's partners.



01



In the past, the ration packs normally contain Milo or biscuits. I cook for myself when I can, so I prefer to be able to choose my own food items.

**MDM FOONG BAN FATT, 73**  
Beneficiary of Imagine!  
Programme under Silver Ace  
Senior Activity Centre @ Lengkok  
Bahru

### Food Ration Project

A group of National University of Singapore (NUS) students studied the current system of food ration distribution. They discovered that the beneficiaries often do not consume all items within the pack, which resulted in unnecessary wastage.

The innovative students then developed a more efficient model, where the elderly could “shop” for food rations through a point system and redeem items of their choice. The CDC helped linked them up with a corporate partner, GlobblerShop, which provides most of the ration items.



02



“We decided to implement this food ration project as we saw a need on the ground. Previously, food rations were distributed in a ‘take-it-or-leave-it’ situation. This results in a wastage of items as residents who are unable to consume certain items will throw them away. We felt that it would be a good idea to allow the elderly to choose their ration items instead, so as to reduce food wastage and also enable them to make independent choices.”

**TAN WEILIE, 24**  
NUS student

02 Student volunteers explaining to the elderly how to go about exchanging their points for ration items.

01 Student volunteers greeting the seniors and guiding them around the ration booths.

### North East CDC NTUC FairPrice Foundation Wish Upon A Silver Star

The one million origami stars folded by the community helped raised \$100,000 for 250 disadvantaged elderly in terms of replacing their old and broken household appliances. Some 40,000 volunteers from all walks of life such as residents, students, corporations, hospital patients and prison inmates stepped forward to fold the stars – every 10 folded stars garnered \$1 in sponsorship from NTUC FairPrice with a dollar-for-dollar matching by North East CDC.

For a period of more than two months, the whole community was rallying behind the cause, roping in family and friends who would collect strips of origami paper and delivering back the handmade stars once they were ready. The volunteers would spend their lunchtime bonding over the origami stars and swarming North East CDC's office with bag loads of folded stars everyday. Their commitment proved that small acts can make a difference and they had touched the lives of the old folks who benefitted from the household appliance replacements.



Our old television set was breaking down and we don't know how to fix it. It is great that we are getting a new one.

**MDM ONG SIEW CHOO, 78**  
Beneficiary of NTUC FairPrice  
Foundation Wish Upon A  
Silver Star



02



01

- 01 Nurses from Ward 12A doing what they do best – selflessly contributing their energy.
- 02 A group of Tampines Primary School student presenting their origami stars during the event.

### North West CDC WeCare @ North West – Service Week

'Tis the season to spread some love! The New Year is coming and in order to spread festive cheers for needy residents, North West CDC initiated a food distribution programme. Preparations started in the last quarter of 2013, as the CDC sought partnerships and approached corporate partners, voluntary welfare organisations

(VWOs), GROs and schools located near rental units to join in the distribution. More than 700 volunteers chipped in and the CDC managed to distribute 3,600 festive goodie packs containing items such as cookies, rice, sports bottle, festive snacks or canned food to households residing in the rental units in 12 days.

Residents were very happy to receive the festive goodies and enjoyed some extra company, which helped liven up the celebrative mood.



This is a very meaningful event as I get to share the festive joy with the whole community and I get a chance to bond with my friends too.

**NUR LIYANA BTE AFANDI**  
Volunteer

01



### South East CDC Community Laboratory @ South East

Ready to get your minds churning and hands dirty for our community? Welcome to Community Laboratory @ South East, where projects envisioned by students become reality.

South East CDC partnered six schools, namely Dunman High school, Hwa Chong Institution, Tanjong Katong Girls' school, Temasek Junior College, Catholic Junior College and Nanyang Junior College for the programme to connect students to GROs and VWOs. Through this service leadership programme, the students were empowered to co-create projects with grassroots leaders after gaining insight into needs within the community. This will encourage community ownership amongst youth.



01

#### Wall of Residents

July 2013 marked the creation of Wall of Residents, a mural project that brought 17 families together, many of them met for the first time despite being neighbours. New friendships were forged quickly as they got together to decorate ceramic tiles that were representative of their households. The mural also became a beautiful work of art that symbolises neighbourly love and friendship.

#### Ultimate Race @ Hort Park

It was an amazing race of friendship as where everyone emerged a winner, having made new friends and spent quality time with family. 25 residents competed in a community version of Amazing Race in July 2013 at Hort Park. It was an innovative bonding opportunity for the families to enjoy precious family time while having some healthy competition with newfound friends.



02



03

01 Residents bond while contributing to Residents' Wall tree mural painting

02 NYJC student interacting with a family at the Ultimate Race @ Hort Park

03 Children lending a hand to their tile painting

**South West CDC*****I Love South West Challenge in conjunction with Youth Hands-On! @ South West***

The *I Love South West Challenge* proved that our youths truly care. More than 1,200 youths carried out community service projects across the South West District, from dengue prevention efforts, litter-picking drive to spring-cleaning the homes of needy residents as part of volunteerism efforts. The CDC supported the programme by funding their community service projects.

To date, the CDC has reached about 13,000 youth and beneficiaries in a variety of community service activities ranging from fund raising activities, to bringing beneficiaries on field trips and engaging them in sporting activities. In addition, the CDC also managed to pledge 100,000 volunteer hours and raised \$100,000 to benefit 1,000 needy households. The programme successfully helped to promote active citizenry to co-create and co-build a vibrant and gracious community among all stakeholders in the District.



01



It's always a good feeling to be able to give back to the community, especially when we are making a difference in people's lives. No matter how tiring it might be at the end of the day, the feeling when you see a smile on their faces is priceless.

**KEE ZHEN XING JACK, 23 YEARS OLD**

Volunteer, ITE College West



Volunteerism should not only be an individual effort, but a family activity and a lifestyle. It could be simple things like setting off for church half an hour earlier, and on the way, drop by at one of our service centres to help prepare breakfast for the elderly and keep them company.

**MR LENG CHIN FAI**

Director of Fei Yue Community Services



02

01 Youth volunteers pitching in to help clean up the homes of beneficiaries during Youth Hands On! @ South West.

02 Dr Amy Khor, Mayor of South West District together with Mdm Wu Cheow Yoong, Director of Kim Hock Corporation and Mr Terence Quek, Chairman, South West CDC Community Outreach & Service Functional Committee (COS FC), presents energy-efficient household items to beneficiaries of the 'I Love South West' Challenge.



## Financial Information



### STRUCTURE

The Community Development Council (CDC) is managed by a Council comprising the Mayor and members. The Council is appointed by the Chairman or Deputy Chairman of the People's Association Board of Management. The CDC is governed by the Community Development Council Rules.

### MANAGEMENT OF CONFLICT OF INTEREST

A member of the Council or the sub-committee who is in any way, directly or indirectly, interested in a transaction or project or other matter of the Council or sub-committee shall disclose the nature of his interest at the first meeting of the Council or sub-committee at which he is present after the relevant facts have come to his knowledge.

A disclosure shall be recorded in the minutes of meeting of the Council or sub-committee and, after the disclosure, that member:

- a) shall not take part in any deliberation or decision of the Council or sub-committee with respect to that transaction or project; and
- b) shall be disregarded for the purpose of constituting a quorum of the Council or subcommittee for such deliberation or decision.

### FINANCE MATTERS

#### Description of instrument setting up the charity

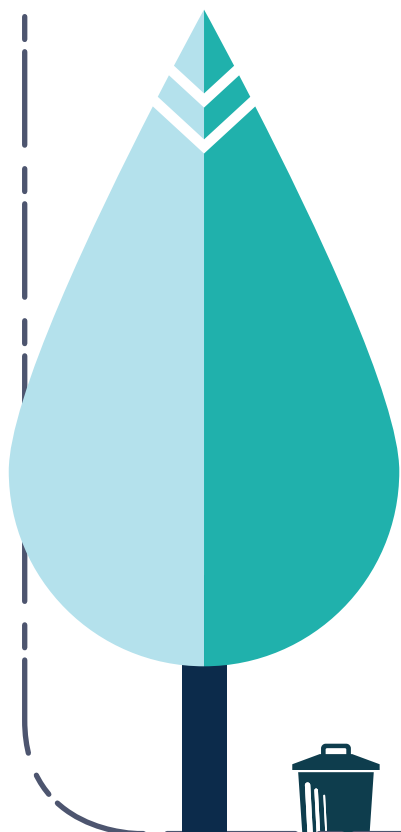
The CDC Project Management Fund Management Committee was set up as a Fund governed by Rules and Regulations.

#### Review of financial state

The financial year period of 2013 refers to 1st April 2013 to 31st March 2014. The amount of donations raised for the financial year was \$11.8 million. This was an increase of \$1 million compared to FY2012 (\$10.8 million). Also, the Fund has recorded a decrease of \$1.5 million for the financial year. Overall, there is an accumulated surplus of \$50.8 million.

#### Related entity

People's Association





## FUNDING

### Annual resident grant

Each Community Development Council (CDC) is provided with an annual grant of \$1 per resident living in its District for funding its programmes.

### Matching grant from Government

The CDC can also raise funds for its programmes. For every \$1 donated to the CDC, the Government will match it with \$3. To encourage regular donations, the Government gives a higher matching grant of \$4 for every \$1 raised through GIRO contributions by local residents and businesses. The matching grant for the CDCs is capped at \$24 million annually.



**\$11.8M**  
donations raised for  
the financial year 2013



**\$50.8M**  
accumulated surplus

## OPERATING GRANT

The Government funds the operations of the CDC offices.

## RESERVE POLICY

Our reserves position:

	Current Year (S\$)	Previous Year (S\$)	% increase / (Decrease)
Unrestricted Funds (Reserves)	\$50,826,502	\$52,390,752	
Restricted / Designated Funds:			
- Building Fund	NA	NA	NA
- Others	NA	NA	NA
Endowment Funds	NA	NA	NA
Total Funds	\$50,826,502	\$52,390,752	
Annual Operating Expenditure	\$48,628, 570	\$44,222,795	
Ratio of Reserves to Annual Operating Expenditure	1.05 : 1	1.18 : 1	

The reserves that CDCs have set aside provide financial stability and the means for the development of CDCs' programmes and services. The Councils carry out quarterly reviews on the amount of reserves that are required to ensure that these are adequate to fulfill our continuing obligations.



# List of Council Members



## CENTRAL SINGAPORE CDC

### SECRETARY-TREASURER

**Mr Tan Chee Hau**

General Manager

Date of appointment: 1/8/2012

### CAPABILITY BUILDING COMMITTEE

Chairman

Mr Sarjit Singh s/o Sarmukh Singh, BBM  
(Capability Building and Finance)

Vice Chairmen

Mr Chan Yew Meng  
Mr Ong Chin Lee, Peter  
Ms Priscilla Loke, PBM  
(Capability Building and Networx)

Members

Dr Hong Chee Boo, Allan, JP, BBM (L)  
Mr Koh Heng Kang, Peter  
Mr Koh Wai Kit  
Miss Kwek Poh Heok  
Mdm Kwek Soh Cheng, Betty, BBM  
Mr Philip Wu Chong Guan

### COMMUNITY IMPACT PROGRAMMES COMMITTEE

Chairman

Mr Wan Kwong Weng, PBM

Vice Chairman

Mr Zahidi Bin Abdul Rahman, BBM

Members

Mr Chew Yew Kuen, Michael, PBM  
Mr Chua Seng Chye, Winston  
Mr Dennis Lin  
Mr Edward D' Silva  
Mr Lim Sing Siong, Charles  
Mr Mohamed Nasim s/o Abdul Rahim, PBM  
Mr Nai Thong Lee Samuel  
Dr Pan Chuan-Hsin, James  
Mr Pateloo Eruthiyanathan Ashokan  
Mr Raymond Tan Kia Lock  
Dr Sayampanathan Selan R E, PBM  
Dr Shahul Hameed s/o M K Kader Muhaiadeen  
Mr Shepherdson Rene Jr Gerard, PBM  
Mr Shiau Vee Lung, Daren  
Ms Sim Yun Ying  
Mr Khoo Lian Wai, Jimmy

### FINANCE COMMITTEE MEMBERS

Ms Ang Li Huang  
Mr Kwek Rui Sen, Kelvin  
Mdm Low Wai Peng

### NETWORX COMMITTEE

Chairman

Mr Ng Kian Woon, PBM

Vice Chairmen

Mdm Noelene De Foe, BBM  
Mr Yip Shee Yin, PBM

Members

Mr A Marai Malai Maran, PBM  
Mr Ang Kian Soon, Kelvin  
Mr Joseph Charles Victor Jolly  
Mr Chris Hooi Tuck Loong  
Dr Daniel Chia Hock Thye, PBM  
Mr Dave Teo Lai Hock, PBM  
Mr Edmund Ng Kok Wah  
Mr Er Kwong Wah, BBM  
Mr Gay Teow Hua, Herman, BBM  
Mr Jeya Poh Wan Suppiah  
Mr Koh Kok Weng, BBM, PBS  
Mr Laurence Liew Yuen Kien  
Mr Lim Huan Chiang, JP, BBM (L), PB  
Ms Ling Bee Sian, PBM  
Ms Ling Bee Yen, Allysia  
Mr Loy Boon Keow, PBM  
Mr Luai Hong Kheng, Leon, PBM  
Mr Robert Ronald, PBM  
Mr Soh Chee Keong, BBM, JP  
Mr Vairappan Tamilselvam  
Ms Vernetta Lesley Lopez  
Mr Vincent Teo Tee Kiah, BBM(L)  
Mr Wong Wai Chuan, Philip

### SELF-RELIANCE COMMITTEE

Chairman

Mr Ong Kong Khoo Perry

Vice Chairman

Ms Han Yah Yee

Members

Mr Cheng Siew Cherng, Roy, PBM  
Mr Kor Min Yee, Vincent  
Mr Kumaravelu Sinniah  
Mr Saktiandi Bin Supaat  
Ms Susana Concorde Harding  
Mr Yong Boon Chuan, Leslie, BBM (L)

## NORTH EAST CDC

### SECRETARY-TREASURER

**Mr Joel Leong Kum Hoe**

General Manager

Date of Appointment: 16/12/2011

### CHILDREN AND YOUTH COMMITTEE

Chairman

Mr Yeo Peng Keng, Steven, PBM

Vice Chairman

Mr Prakash s/o Somosundram

Members

Mr Ahmad Bin Abu Bakar Bagharib  
Mr Foo Sek Liang, Winson @ Mohamed Ibrahim Foo B Abdullah, PBM  
Mr Tan Wei Ming, Christopher  
Mr Lee Kim Siang, BBM(L)  
Mr Poh Soon Meng, Matthew  
Mr Wee Sheng Felix  
Dr Yap Soon Guan, Sam  
Mdm Tan Chiew Hwei, Coreen

### CORPORATE AND MARKETING COMMUNICATION COMMITTEE

Chairman

Mr Darryl David Wilson

Vice Chairman

Mr Jose Raymond

Members

Miss Tan Shu Min, Emily  
Mr Tan Kok Heng, Leroy Solomon, PBM  
Mr Lim Jeu Kin, Lawrence  
Mr Low Chuan Hoe, Henry , PBM  
Mr Ong Liang Gay, Archie  
Mr Hooi Keng Cheong, Gerard, PBM

### CORPORATE SOCIAL RESPONSIBILITY (CSR) COMMITTEE

Chairman

Mr Tham Min Yew, Russell

Vice Chairmen

Mr Chioh Ping Zhang, Ryan  
Mr Pereira Harry Bernard

Members

Mr Shahul Hamid Bin Jahabar Sali  
Mrs Chong Ying Ying, Nanz  
Dr Chow Hoi Hee, Charles, PBM



## NORTH WEST CDC

Mdm Christine Geraldine Clunies Ross  
Mr Kim Tze Wen, Lawrence  
Dr Rajagopal Navin  
Mr Yong Siew Khiong, Joseph, PBM

**ELDERLY COMMITTEE**Chairman

Ms Ang Hiok Lian, Juliana

Vice Chairman

Mr Lim Choon Tee, Alvin

Members

Ms Braema Mathiapparanam  
Mr Raja Mohan s/o Murugesu  
Kanagaratnam, PBM  
Mr Tay Chye Kim, Eugene  
Mdm Tng Pheck Lek, Phyllis, PBM

**EMPLOYMENT AND TRAINING COMMITTEE**Chairman

Miss Farah Abdul Rahim, PBM

Vice Chairman

Mr Lien Hoi Choon, Stanley, PBM

Members

Mr Abdul Aziz Bin Abdul Samad PBM  
Mr Ismail Muhamad Hanif  
Mr Lin Poh, Derrick

**FAMILY COMMITTEE**Chairman

Mr Ang Khoon Seng, David, PBM

Vice Chairman

Mdm Lim Peck Seah

Members

Mr Abdul Halim Bin Aliman  
Ms Lai Lye Khum, Jennifer  
Mr Lee Tai Loong, Joachim  
Mr Loi Boon Sim, Adrin  
Mr Leow Sunny, BBM  
Mr Poh Cheng Seng, David  
Mdm Wong Sit Ping, Samantha, BBM  
Mr Saifulbahri Bin Rasno  
Mr Soh Yong Nee, BBM  
Mr Tan Aik Hong, Thomas

**FINANCE COMMITTEE**Chairman

Dr Kan Yaw Kiong, Ernest, PBM

Vice Chairmen

Mr Tan Beng Guan, Alancia  
Mr Ho Seng Chee

Members

Mrs Lily Mary Hugh Wai Fun, PBM  
Mr Tay Ah Wah, Richard, PBM

**SPECIAL NEEDS COMMITTEE**Chairman

Dr Ori Sasson

Vice Chairman

Mr Koh Tiong Wah, Albert, PBM

Members

Mr Haja Nizamudeen  
Miss Judy Anne Wee  
Mdm Tan Li Hua, Rebecca  
Mr Tan Yak Khoon, Patrick, PBM

**SECRETARY-TREASURER****Ms Crystal Teng Bee Kim**

General Manager

Date of Appointment: 1/11/2010

**ARTS AND CULTURE COMMITTEE**Chairman

Mr Ang Aik Leng Allen, PBM

Vice Chairman

Mr Chong Shin Leong Vincent, PBM

Members

Ms Cheong Mei Foong Audrey  
Mdm Goh Bee Geok Angela, BBM  
Mrs Manokara Sugunavathi d/o  
Krishnasamy  
Mr Mohd Tahir Bin Mahmood  
Mr Subramaniam s/o Ramasamy, PBM  
Mdm Zainab Bte Sabtu

**COMCARE COMMITTEE**Chairman

Dr Lee Ngak Siang, PBM

Vice Chairman

Mr Abdul Rahim Bin Mawasi

Members

Mr Koh Guan Hwee, PBM  
Dr Ramaswamy Akhileswaran  
Mr Tan Meng, BBM  
Mr Tan Eng Siong Dennis  
Miss Teo Ser Lee  
Ms Wu Choy Siong

**CORPORATE COMMUNICATIONS COMMITTEE**Chairman

Dr Lau Hwee Beng

Vice Chairman

Mr Goh Yew Lee Alvin, PBM

Members

Ms Boo Chee Lan Krist  
Dr Fong Chee Yang Allan, PBM  
Mr Isson Jacob  
Mr Ramesh s/o Selvaraj  
Mdm Rashidah Bte Ab Rasip



# List of Council Members



## NORTH WEST CDC

### FINANCE COMMITTEE

#### Chairman

Mr Chandra Mohan s/o Rethnam, PBM

#### Vice Chairman

Mr Pek Yew Chai

#### Members

Mr Aw Kai Aik Norman, BBM  
Mr Choo Tuck Meng William, BBM  
Mr Lim Ah Lek Chris, BBM  
Mr Neo Hwee Siang  
Mr Sim Yeow Kwee David, BBM  
Mdm Yeo Kim Neo Josephine, PBM

### GREEN COMMITTEE

#### Chairperson

Miss Cheng Li Hui, PBM

#### Vice Chairman

Dr Yap Seng Bee Robin, PBM

#### Members

Mr Ang Swee Koon Peter  
Mdm Chan Ai Lynne  
Mr Chee Kwang How  
Mr Jee Su Giam  
Mr Ong Wee Heng  
Mr Paiman Bin Supangat

### HEALTHY LIFESTYLE COMMITTEE

#### Chairperson

Ms Hoe Joo Choo Eileen

#### Vice Chairman

Mr Lim Hai Meng Nicholas

#### Members

Miss Chia Swee Lian Doreen  
Mr Goh Hung Kwang, BBM  
Mr Goh Peng Hong, PBM  
Mr Kong Meng Sin Pete, PBM  
Mdm Song Swee Lian Corina

#### Associate Member

Mr Tan Teng Hoo William

### JOB ASSISTANCE COMMITTEE

#### Chairman

Mr Tan Chor Khoo Vincent, PBM

#### Vice Chairman

Mr Ng Chow Yong

#### Members

Mr Lim Soon Hock, PBM  
Mr Malik Bin Maksudi, PBM  
Mr Mohamed Ali Bin Atan  
Mr Ng Pooh Cheok Charles  
Mr Tan Kok Kheng Kenny  
Mr Lee Soon Guan

### YOUTH COMMITTEE

#### Chairperson

Mdm Heng Boey Hong, PPA(G), PBM

#### Vice Chairman

Mr Chua Boon Wah Roger

#### Members

Mr Ching Liang Heng Albert  
Dr Ho Ching Lin  
Dr Maszenan Bin Abdul Majid, PBM  
Mr Mohammed Nazerul Khairy Bin Dzulkefli  
Miss Ser Xiang Ying Adrienne  
Mr Sng Chin Seng

## SOUTH EAST CDC

### SECRETARY-TREASURER

#### **Mr Kia Siang Wei**

General Manager

Date of Appointment: 16/7/2013

### ACTIVE AGEING/ELDERLY COMMITTEE

#### Chairman

Mr Samuel Ng Beng Teck, PBM

#### Members

Mr Chua Soon Lee, BBM  
Mr Eddie Woon Yat Thian, PBM  
Mr Tan Yew Beng, BBM  
Dr Jean Ong Choo Khim  
Mr Mohamed Bin Abul Rahman, PBM  
Miss Teo Chia Leen  
Mr Toh Poh Hin

### FAMILIES COMMITTEE

#### Chairman

Mr Louis Lim Hee Thuang, PBM

#### Members

Mr David Chan Thin Cheong  
Mdm Eber Francesca Regina  
Dr Vincent Chan Hian Hui

Ms Tarn Teh Chuen

Mdm Tan Yok Joo

Mr Dennis Lee Hock Leong

Prof Lai Kim Fatt, PPA (P) (L)

Mr Yong Yih Ming

Mdm Tan Lee Peng Tresor Anne

### LOW WAGE FAMILIES COMMITTEE

#### Chairman

Dr Sudha Nair

#### Members

Mdm Foo Siew Fong, PBM  
Mr Kenneth Goi Kok Ming  
Mr Neo Sing Hwee  
Mr Ng Cher Yan, PBM  
Mr Ng Yong Hwee, PBM  
Mr Chia Ngiang Hong, JP, BBM  
Ms Vickie Lee Bee Bee  
Ms Amy Tan Wei Leng

### ADULTS INTERACTIVE COMMITTEE

#### Chairman

Mr Stephen Leong, BBM

#### Members

Mr S. Yogeewaran, PBM  
Mr Kenneth Tan Khoon Tuan  
Mr Lim Joo Kwan, JP, BBM (L)  
Mdm Ruth Cheng Fong Leng, PBM  
Mr David Ngoh Tai Wee  
Mr Eric Chew Yee Teck  
Mr Boxall David Anthony  
Mr Lee Teck Leng  
Mr Chandra Nantha Kumar  
Mr Tan Puay Hiang

### YOUTH COMMITTEE

#### Chairman

Mr Adam Abdur Rahman, PBM

#### Members

Mr Calvin Teo Han Siong  
Ms Amatul Jameel Suhani Binte Suhari, PBM  
Mr Chong Leong Fatt, PBS, PPA (P)  
Ms Jaclyn Chow Yuen Meng  
Mr Jonathan Shek Chee Meng  
Mr Tan Jack Thian  
Mr Adler Lai Mun Pang

### FINANCE COMMITTEE

#### Chairman

Mr Chia Ngiang Hong, JP, BBM



Members

Mr Kenneth Goi Kok Ming  
Mdm Foo Siew Fong, PBM  
Ms Tarn Teh Chuen  
Mr Ng Cher Yan, PBM  
Mr Dennis Lee Hock Leong  
Mr Neo Sing Hwee

**SOUTH WEST CDC****SECRETARY-TREASURER****Ms Dulcie Eng Pei Wen**

General Manager

Date of Appointment: 26/10/2011

**ARTS & CULTURE COMMITTEE**Chairman

Mr Kenny Low Heng Khuen

Vice-Chairmen

Mr Chng Hwee Hong  
Mr Bobby Teh Seng Lee, PBM

Members

Mr Abdul Mutalif Hashim, PBM  
Tuan Haji Md Yusof Ismail  
Mr Patrick Khoo Hang Choong  
Mr Jefferson Neo Cheng Ghee, PBM  
Ms Sumitra Pasupathy  
Mr Kelvin Tay Hsien Chuan

**COMMUNITY OUTREACH & SERVICE COMMITTEE**Chairman

Mr Terence Quek Chun Hou

Vice-Chairmen

Mr Mohamed Redhza Bin Abdul Rahim  
Dr Yek Tiew Ming, PBM

Secretary

Mdm Jenny Wee May Ling

Members

Mr Ang Jit Chuang, PBM  
Mr Chan Keen Len, PBM  
Ms Elim Chew Soo Gim, PBM

Mr Alan Goh Eng Song  
Ms Tina Hung  
Dr Joshua VM Kuma, PBM  
Mr Leng Chin Fai  
Dr Ngiam Tee Liang, BBM  
Mr Leslie Yeo Qi Fu  
Dr Yu Shi Ming, PBM

**CORPORATE COMMUNICATIONS & ENGAGEMENT COMMITTEE**Chairman

Mr Seow Choke Meng, PBM

Vice-Chairmen

Mr Lim Der Shing  
Mdm Tang Gar Keow @ Angie Tang

Secretary

Mr Timothy Chan Chee Mun

Members

Mr Chong Lit Cheong  
Mr Andrew Chua Thiam Chwee, BBM  
Mr Joseph Foo Chew Tuck, JP, BBM  
Ms Jenny Koh Chuey Keen, PBM  
Mr Koh Kong Wen  
Mr Danny Lien Chong Tuan  
Mr Vincent Lim Boon Pian  
Mr Sardar Aslam  
Mdm Theresa Tan Lee San  
Mr Tay Kia Lai

**FINANCE COMMITTEE**Chairman

Mr Sajjad Ahmad Akhtar, PBM

Vice-Chairmen

Mr Lau Chin Huat, PBM  
Mr Tan Fuh Gih, PBM

Member

Mr Ng Hock Lye, BBM (L)

**HEALTHY LIFESTYLE COMMITTEE**Chairman

Mr Liak Teng Lit

Vice-Chairmen

Mr Foo Hee Jug  
Mr Justin Foo Yang Chiang, BBM

Secretary

Dr Azlinda Binte Anwar

Members

Dr Peter Chew Chee Tong  
Ms Koh Hui Hwa  
Mr Robin Ng Chee Chuan, PBM  
Mr Richard Ong Chuan Huat, BBM

**PUBLICATIONS COMMITTEE**Chairman

Mdm Karen Wong Tzen Yen

Vice-Chairman

Mr Dicky Goh Ming Tung

Members

Mr Mohamed Farid Bin Mohd Hamzah  
Mr Yap Thian Ling, BBM

**SUSTAINABLE ENVIRONMENT COMMITTEE**Chairman

Mr Tiew Chew Meng

Vice-Chairman

Mr Low Min Chye

Secretary

Mr Loo Deliang

Members

Mr Wilson Ang  
Mr Kenny Eng Tok Ching  
Mr Julian Goh Seo Hian  
Dr Kua Harn Wei  
Mr Lim Boon Lye, PBM  
Mr Desmond Pek Ting Li, PBM  
Mr Charles Quek Gim Cheng, PBM





# cdc care

We Care

## CENTRAL SINGAPORE CDC

HDB Hub Bizthree,  
490, Lorong 6 Toa Payoh,  
#07-11 (Lobby 2), Singapore 310490  
6370 9901 (T) | 6370 9928 (F)  
[feedback@centralsingapore.org.sg](mailto:feedback@centralsingapore.org.sg)  
[facebook.com/centralsgcdc](https://facebook.com/centralsgcdc)

## NORTH EAST CDC

300 Tampines Ave 5, #06-01,  
NTUC Income Tampines Junction,  
Singapore 529653  
6424 4000 (T) | 6424 4066 (F)  
[ask@northeast.org.sg](mailto:ask@northeast.org.sg)  
[facebook.com/NECDC](https://facebook.com/NECDC)

## NORTH WEST CDC

900 South Woodlands Drive,  
#06-07, Woodlands Civic Centre,  
Singapore 730900  
6767 2288 (T) | 6219 1176 (F)  
[northwest\\_cdc@pa.gov.sg](mailto:northwest_cdc@pa.gov.sg)  
[facebook.com/nwcdc](https://facebook.com/nwcdc)



## SOUTH EAST CDC

10 Eunos Road 8, #02-01,  
Singapore Post Centre,  
Singapore 408600  
6243 8753 (T) | 6243 3130 (F)  
[southeast\\_cdc@pa.gov.sg](mailto:southeast_cdc@pa.gov.sg)  
[facebook.com/secdc](https://facebook.com/secdc)

## SOUTH WEST CDC

The JTC Summit  
8 Jurong Town Hall Road  
#26-06, Singapore 609434  
6316 1616 (T) | 6316 7250 (F)  
[southwest\\_cdc@pa.gov.sg](mailto:southwest_cdc@pa.gov.sg)  
[facebook.com/southwestcdc](https://facebook.com/southwestcdc)

