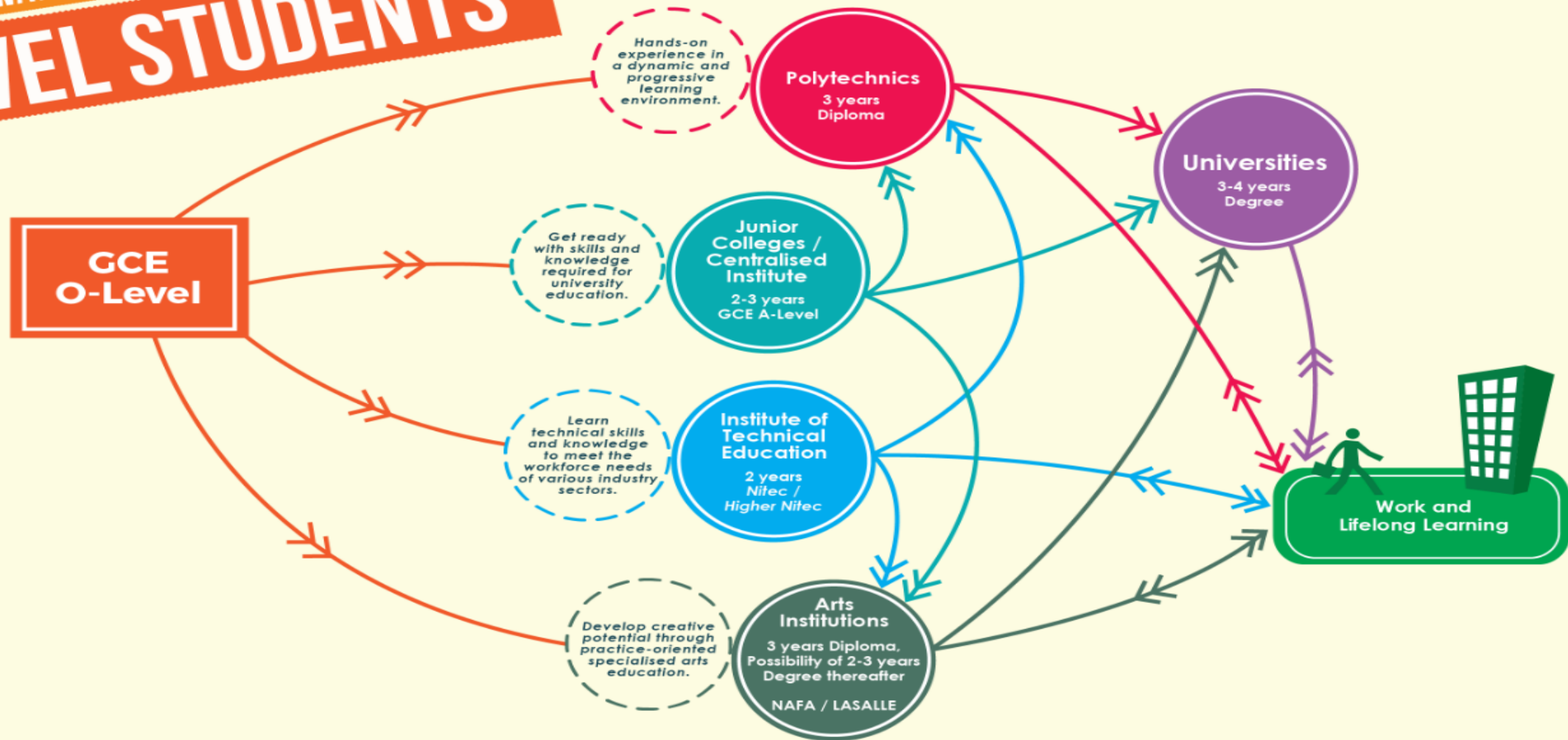


BEDOK SOUTH SECONDARY SCHOOL

Secondary 4 & 5
Parent Engagement Session

02 February 2024, Friday

MULTIPLE PATHWAYS FOR O-LEVEL STUDENTS



HOW TO APPLY

JUNIOR COLLEGES/CENTRALISED INSTITUTE

- * Joint Admissions Exercise (JAE)
- * Direct School Admission-JC (DSA-JC) Exercise

POLYTECHNICS

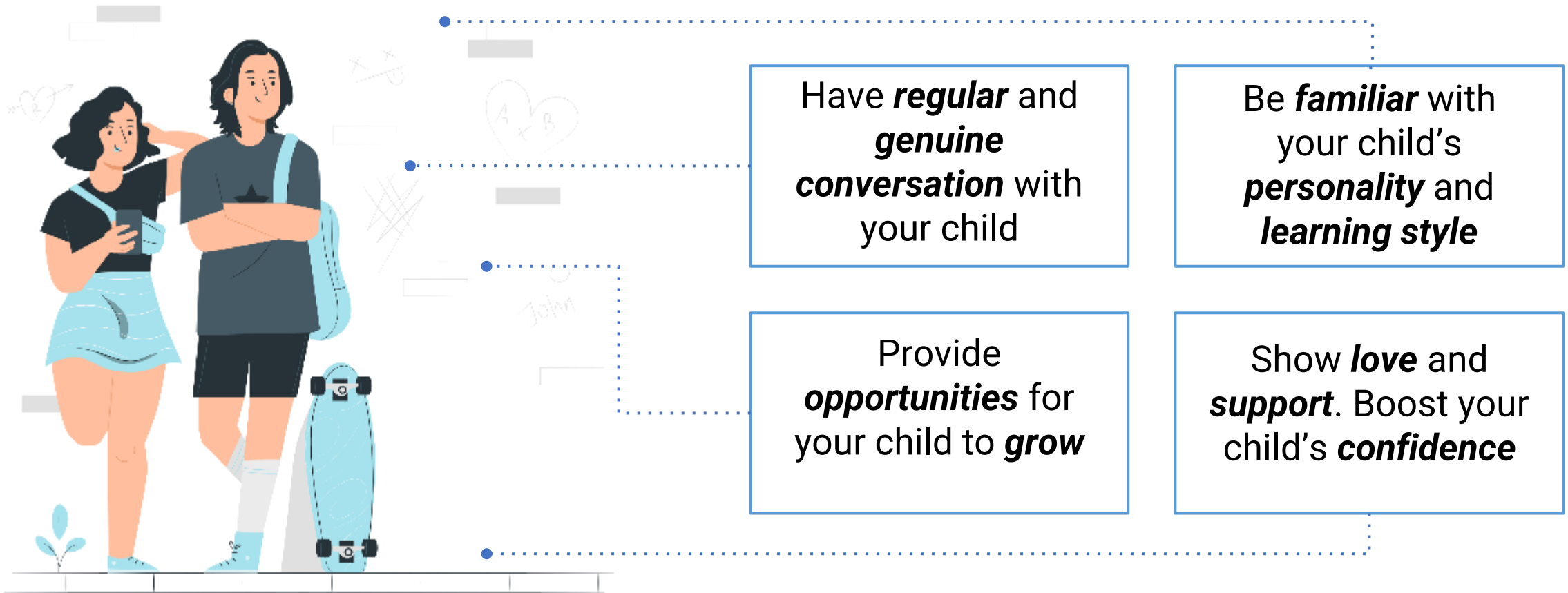
- * Joint Admissions Exercise (JAE)
- * Early Admissions Exercise (EAE)
- * Direct Admissions Exercise (DAE)

INSTITUTE OF TECHNICAL EDUCATION

- * Joint Intake Exercise (JIE) for Nitec courses
- * Joint Admissions Exercise (JAE) for Higher Nitec courses
- * Special College Admissions Scheme (SCAS)

ARTS INSTITUTIONS

- * The Arts Institutions are the Nanyang Academy of Fine Arts (NAFA) and the LASALLE College of the Arts (LASALLE)
- * Apply directly to the Arts Institutions
- * Admissions information is available on the NAFA and LASALLE websites



Supporting Your Child's Aspirations

To access JAE Booklet 2024:

<https://go.gov.sg/2024jae>



Eligibility Criteria

Junior Colleges & Millennia Institute (DSA, JAE)

Admission Requirements: (Subject Specific Requirements)

C6 or better in English Language

D7 or better in Mother Tongue (Merit or Pass for MTLB)

D7 or better in Maths or Add Maths

JC – L1R5 aggregate of 20 points or less for the 6 Subjects

MI – L1R4 aggregate of 20 points or less for 5 Subjects

Legend:

L1 = English or Higher Mother Tongue

R = Relevant subjects

EL = English Language

B = Best subjects

Polytechnics (EAE, JAE)

Admission Requirements:

Minimum entry requirement (MER) of 26 points or better for ELR2B2. Requirements differ with courses and polytechnics.

Institute of Technical Education (EAE, JAE)

Admission Requirements: ELB4, ELR1B3 or ELR2B2

NITEC

2 'O' Level Grades (Min: Grade 1-8)

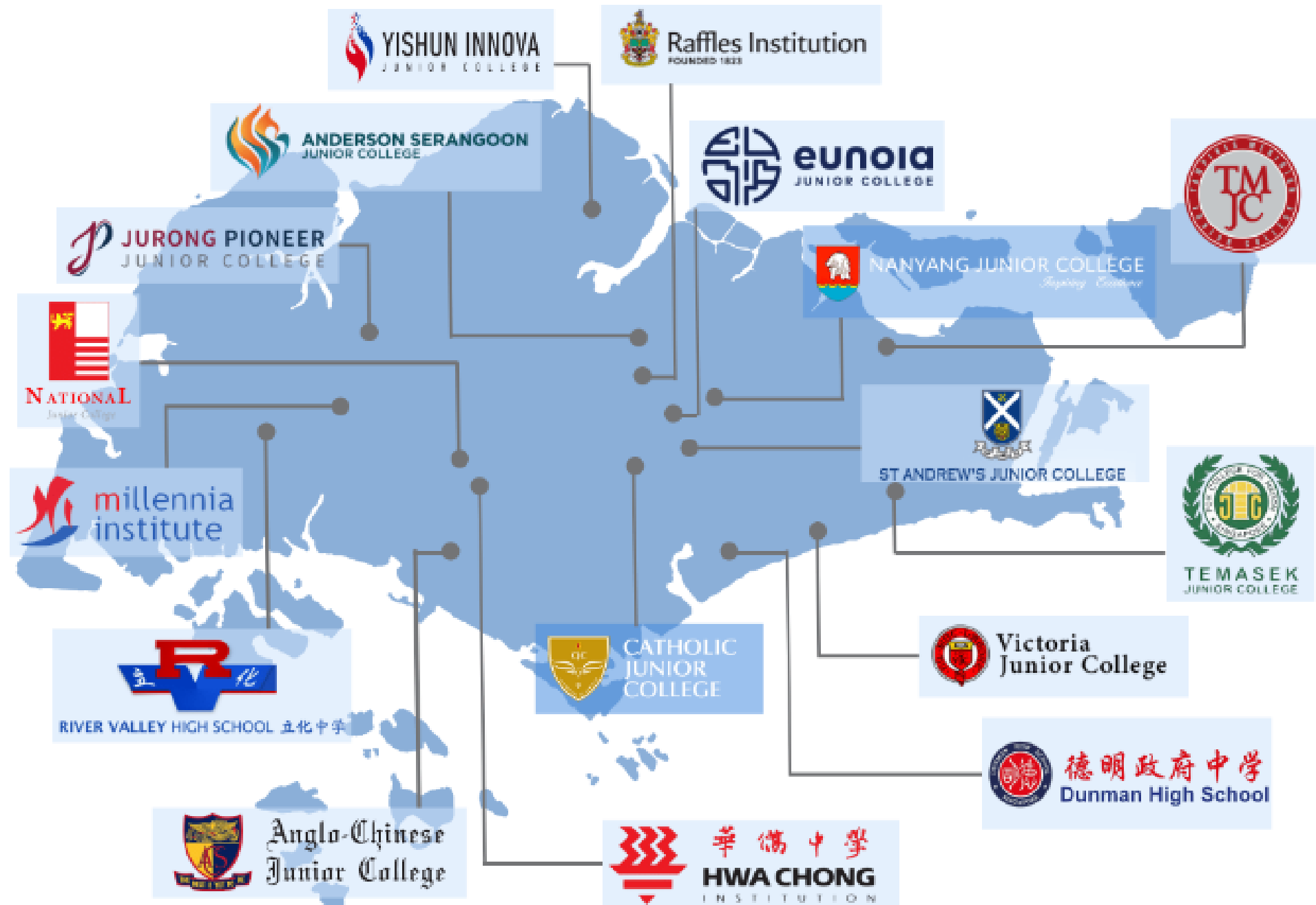
Higher NITEC (2 year/ 3 year)

3 'O' Level Grades (Min: Grade 1-8)

Requirements differ with courses.



Students MUST meet the minimum Cut Off Point & entry requirements for the course they want to pursue



Direct School Admission (DSA-JC) Exercise

What is it?

Seeking admission to a junior college (JC) on the **basis of talents and achievements** that may **not be demonstrated at the GCE 'O' Level Examination**. It enables students to enter suitable academic and non-academic programmes in junior colleges that can develop the students in these areas.

Discussions that parents can have with your child

- 1) Shortlist junior colleges with DSA areas that match their strengths and/or interests.
- 2) What is the academic programme(s) offered by the schools i.e. GCE 'A' Level, International Baccalaureate Diploma?
- 3) Which school best suits their learning pace, aptitude and strengths?
- 4) Are there other factors that will affect their JC experience (e.g., the distance of the school from home)?
- 5) **Visiting the schools' Open House**

Selection

The **selection process differs across schools, and for different DSA categories.**

Depending on the DSA area applied to, students may be asked to submit a portfolio showcasing their talents and achievements, secondary school results, CCA records, a personal statement and/or a character reference. Schools might also administer interviews, tests, or trials.

Submit the DSA application form before the deadline. (Note: Please check the individual school websites as the application period and procedures can vary from school to school.)

Coming Up in May

So... What is the cut-off point I have to meet?

What if I cannot get into a JUNIOR COLLEGE via DSA?

RECALL

Junior Colleges & Centralised Institute (JAE)

Admission Requirements:

C6 or better in English Language

D7 or better in Mother Tongue (Merit or Pass for MTLB)

D7 or better in Maths or Add Maths

JC – L1R5 aggregate of 20 points or less for the 6 Subjects

MI – L1R4 aggregate of 20 points or less for 5 Subjects

HOW TO APPLY

JUNIOR COLLEGES/CENTRALISED INSTITUTE

- * Joint Admissions Exercise (JAE)
- * Direct School Admission-JC (DSA-JC) Exercise

POLYTECHNICS

- * Joint Admissions Exercise (JAE)
- * Early Admissions Exercise (EAE)
- * Direct Admissions Exercise (DAE)

INSTITUTE OF TECHNICAL EDUCATION

- * Joint Intake Exercise (JIE) for Nitec courses
- * Joint Admissions Exercise (JAE) for Higher Nitec courses
- * Special College Admissions Scheme (SCAS)

ARTS INSTITUTIONS

- * The Arts Institutions are the Nanyang Academy of Fine Arts (NAFA) and the LASALLE College of the Arts (LASALLE)
- * Apply directly to the Arts Institutions
- * Admissions information is available on the NAFA and LASALLE websites



Direct School Admission (DSA-JC) Exercise

May–June 2024 onwards (Check the JC websites for dates)

Visit the MOE DSA-JC website at

<https://www.moe.gov.sg/post-secondary/admissions/dsa/>
for more information



2023 CUT OFF POINTS for JCs (L1R5)

JC Name	Arts		Science		Baccalaureate	
	Course Code	Net L1R5 Range for Previous (2023) JAE	Course Code	Net L1R5 Range for Previous (2023) JAE	Course Code	Net L1R5 Range for Previous (2023) JAE
Anderson Serangoon Junior College	39A	6 to 11	39S	4 to 10	-	-
Anglo-Chinese Junior College	22A	4 to 9	22S	2 to 8	-	-
Anglo-Chinese School (Independent)	-	-	-	-	51I	2 to 5
Catholic Junior College	23A	4 to 14	23S	3 to 13	-	-
Dunman High School	44A	4 to 9	44S	2 to 8	-	-
Eunoia Junior College	38A	2 to 8	38S	2 to 6	-	-
Hwa Chong Institution	24A	2 to 5	24S	2 to 4	-	-
Jurong Pioneer Junior College	40A	5 to 17	40S	5 to 14	-	-
Nanyang Junior College	26A	4 to 6	26S	2 to 5	-	-
National Junior College	27A	5 to 8	27S	2 to 7	-	-
Raffles Institution	28A	2 to 5	28S	2 to 4	-	-
River Valley High School	45A	6 to 9	45S	4 to 8	-	-
St. Andrew's Junior College	30A	3 to 10	30S	3 to 9	-	-
St. Joseph's Institution	-	-	-	-	52I	2 to 7
Tampines Meridian Junior College	41A	6 to 13	41S	4 to 13	-	-
Temasek Junior College	32A	7 to 9	32S	3 to 8	-	-
Victoria Junior College	33A	2 to 8	33S	2 to 7	-	-
Yishun Innova Junior College	42A	11 to 19	42S	6 to 20	-	-

2023 CUT OFF POINTS for JCs (L1R5)

JC Name	Arts		Science		Baccalaureate	
	Course Code	Net L1R5 Range for Previous (2023) JAE	Course Code	Net L1R5 Range for Previous (2023) JAE	Course Code	Net L1R5 Range for Previous (2023) JAE
Anderson Serangoon Junior College	39A	6 to 11	39S	4 to 10	-	-
Anglo-Chinese Junior College	22A	4 to 9	22S	2 to 8	-	-
Anglo-Chinese School (Independent)	-	-	-	-	51I	2 to 5
Catholic Junior College	23A	4 to 14	23S	3 to 13	-	-
Dunman High School	44A	4 to 9	44S	2 to 8	-	-
Eunoia Junior College	38A	2 to 8	38S	2 to 6	-	-
Hwa Chong Institution	24A	2 to 5	24S	2 to 4	-	-
Jurong Pioneer Junior College	40A	5 to 17	40S	5 to 14	-	-
Nanyang Junior College	26A	4 to 6	26S	2 to 5	-	-
National Junior College	27A	5 to 8	27S	2 to 7	-	-
Raffles Institution	28A	2 to 5	28S	2 to 4	-	-
River Valley High School	45A	6 to 9	45S	4 to 8	-	-
St. Andrew's Junior College	30A	3 to 10	30S	3 to 9	-	-
St. Joseph's Institution	-	-	-	-	52I	2 to 7
Tampines Meridian Junior College	41A	6 to 13	41S	4 to 13	-	-
Temasek Junior College	32A	7 to 9	32S	3 to 8	-	-
Victoria Junior College	33A	2 to 8	33S	2 to 7	-	-
Yishun Innova Junior College	42A	11 to 19	42S	6 to 20	-	-

HOW TO APPLY

JUNIOR COLLEGES/CENTRALISED INSTITUTE

- * Joint Admissions Exercise (JAE)
- * Direct School Admission- JC (DSA-JC) Exercise

POLYTECHNICS

- * Joint Admissions Exercise (JAE)
- * Early Admissions Exercise (EAE)
- * Direct Admissions Exercise (DAE)

INSTITUTE OF TECHNICAL EDUCATION

- * Joint Intake Exercise (JIE) for *Nitec* courses
- * Joint Admissions Exercise (JAE) for *Higher Nitec* courses
- * Special College Admissions Scheme (SCAS)

ARTS INSTITUTIONS

- * The Arts Institutions are the Nanyang Academy of Fine Arts (NAFA) and the LASALLE College of the Arts (LASALLE)
- * Apply directly to the Arts Institutions
- * Admissions information is available on the NAFA and LASALLE websites



EAE Early Admissions Exercise

► OVERVIEW

► APPLICATION

► COURSES

OVERVIEW

Introduction
Entry Requirements
Application Procedure
FAQs

Introduction

The Polytechnic Early Admissions Exercise (Poly EAE) is an aptitude-based admissions exercise that allows students to apply for and receive conditional offers for admission to polytechnics prior to receiving their final grades. It allows the polytechnics greater flexibility to select and admit students based on their aptitudes and interests, apart from academic grades, thus allowing a wider range of talents to be recognised.

Poly EAE is open to graduating O-Level students and final-year *Nitec* and *Higher Nitec* students from the Institute of Technical Education. Polytechnics can admit up to 15.0% of their total polytechnic intake via Poly EAE.

All five polytechnics participate in Poly EAE:

- Nanyang Polytechnic
- Ngee Ann Polytechnic
- Republic Polytechnic
- Singapore Polytechnic
- Temasek Polytechnic

Best viewed with Internet Explorer 8 and above.

For enquiries, please email to help@eae.polytechnic.edu.sg (O Levels) or help@jpeaei.polytechnic.edu.sg (ITE) and include your NRIC/FIN.

Early Admission Exercise (EAE- Poly) Exercise

<https://eae.polytechnic.edu.sg>

From Mid-June 2024 onwards

In 2023:

From 22 June 2023 to 28 June 2023

Early Admission Exercise (EAE–Poly) Exercise

What is it?

Early Admissions Exercise

The Early Admissions Exercise (EAE) is an **aptitude-based admissions exercise**.

It gives the polytechnics greater flexibility to select and admit students **on criteria other than their academic grades, thus allowing a wider range of talents to be recognised**.

Why should your child go for the EAE?

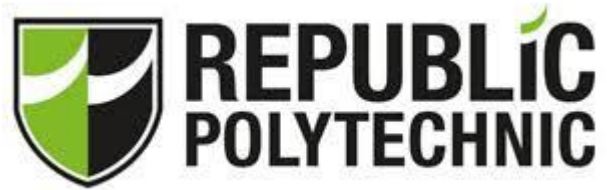
Allow students to apply and receive **conditional offers for admission** to the polytechnics based on their **aptitudes and interests, prior to receiving their final grades**.

A net ELR2B2 score of 26 points or better for the GCE O-Level examinations*; and a Minimum Entry Requirements (MER) for the polytechnic course you have been offered under Poly EAE*.

Selection

All shortlisted **will be interviewed**. Students must prepare for the interview and **not go to TRY THEIR LUCK**.

- 1) Student's aptitude and interest in a field related to the diploma course they are applying for.
- 2) Their confidence during the interview. How strong is their desire to enroll into the course and, how much they know about the course they are applying for.
- 3) Polytechnics may also consider their participation in activities such as work attachments and sustained involvement in projects that are related to the course students are applying for.



So... What is the cut-off point I have to meet if I do not apply through EAE?



JAE ELR2B2 serves only as a guide for students to make informed decisions during their course selection.

To View
the Different ELR2B2 Groups:

[elr2b2.pdf \(np.edu.sg\)](http://elr2b2.pdf(np.edu.sg))

Aggregate Computation for Admission to Polytechnic Courses				
	ELR2B2 : For Polytechnic Courses			
Aggregate Type	ELR2B2-A	ELR2B2-B	ELR2B2-C	ELR2B2-D
EL	English			
R2	1st Group of Relevant Subjects	Elementary Mathematics Additional Mathematics		
	2nd Group of Relevant Subjects	Art Business Studies Combined Humanities Economics Geography Higher Art Higher Music History Humanities (Social Studies, Literature in English) Humanities (Social Studies, Literature in Chinese) Humanities (Social Studies, Literature in Malay) Humanities (Social Studies, Literature in Tamil) Humanities (Social Studies, History) Humanities (Social Studies, Geography) Intro to Enterprise Development Literature in English Literature in Chinese Literature in Malay Literature in Tamil Media Studies (English) Media Studies (Chinese) Music	Art Business Studies Combined Humanities Economics Geography Higher Art Higher Music History Humanities (Social Studies, Literature in English) Humanities (Social Studies, Literature in Chinese) Humanities (Social Studies, Literature in Malay) Humanities (Social Studies, Literature in Tamil) Humanities (Social Studies, History) Humanities (Social Studies, Geography) Intro to Enterprise Development Literature in English Literature in Chinese Literature in Malay Literature in Tamil Media Studies (English) Media Studies (Chinese) Music Principles of Accounts	Biology Biotechnology Chemistry Computing / Computer Studies Creative 3D Animation Design & Technology Food & Nutrition / Nutrition & Food Science Electronics / Fundamentals of Electronics Exercise & Sports Science Physics Science (Chemistry, Biology) Science (Physics, Biology) Science (Physics, Chemistry)
B2	Best 2 Other Subjects (Excluding CCA)			

Note:

1. Grades for both Higher Mother Tongue Language (viz. Higher Chinese, Higher Malay and Higher Tamil) and Mother Tongue Language (viz. Chinese, Malay and Tamil) cannot be used in the same aggregate computation.
2. "Merit" and "Pass" grades for the Mother Tongue 'B' Syllabus (viz. Chinese 'B', Malay 'B' and Tamil 'B') cannot be used for the computation of aggregate points.
3. The "R2" in ELR2B2-A, B, C and D computation for polytechnic refers to 1 subject from "1st Group of Relevant Subjects" and 1 subject from "2nd Group of Relevant Subjects".

HOW TO APPLY

JUNIOR COLLEGES/CENTRALISED INSTITUTE

- * Joint Admissions Exercise (JAE)
- * Direct School Admission-JC (DSA-JC) Exercise

POLYTECHNICS

- * Joint Admissions Exercise (JAE)
- * Early Admissions Exercise (EAE)
- * Direct Admissions Exercise (DAE)

INSTITUTE OF TECHNICAL EDUCATION

- * Joint Intake Exercise (JIE) for Nitec courses
- * Joint Admissions Exercise (JAE) for Higher Nitec courses
- * Special College Admissions Scheme (SCAS)

ARTS INSTITUTIONS

- * The Arts Institutions are the Nanyang Academy of Fine Arts (NAFA) and the LASALLE College of the Arts (LASALLE)
- * Apply directly to the Arts Institutions
- * Admissions information is available on the NAFA and LASALLE websites



Early Admission Exercise (EAE-ITE) Exercise

<https://www.ite.edu.sg/admissions/full-time-courses/early-admissions-exercise>

May–June 2024 onwards
(In 2023: 22 June 2023 to 28 June 2023)

Early Admissions Exercise (EAE)

Nitec courses

[Home](#) > [Admissions](#) > [Full-time Courses](#) > [Nitec](#) > [Early Admissions Exercise \(EAE\)](#)

Nitec



Early Admissions Exercise (EAE)

[Entry Requirements](#)

[Fees](#)

[Academic Progression](#)

[Application for Nitec](#)

[Registration at College](#)

Higher Nitec



Technical Diploma



Prospectus

Forms

What is ITE EAE





What is ITE EAE?

ITE Early Admissions Exercise (EAE) allows you to apply for ITE courses based on your **aptitude and interests**, before taking your GCE N-Level or O-Level exams. If you are successful in the EAE, you will receive a conditional offer for admission to ITE.

Who is it for?

ITE EAE (2024 intake) is for you if you are:

- Taking your GCE N-Level or O-Level exams in 2023
- Keen to pursue your studies in an ITE course
- Passionate with strong aptitude related to the course

ITE EAE may not be suitable for you if you are still unsure about your course of choice. You may want to further explore your interests, and apply for courses at ITE only after your GCE N-Level or O-Level exams.

Note: Students with confirmed ITE EAE offers will not be eligible to participate in other ITE admissions exercises, except for Sec 4N(A) students who are eligible for the Direct Entry Scheme to Polytechnic Programme (DPP).



How do I prepare and apply for EAE?

Find out more about ITE courses and related career options

- Course counselling at ITE
- Online research and visit the ITE website at www.ite.edu.sg
- Talk to your teachers, Education & Career Guidance (ECG) Counsellors, family/relatives

Prepare for your application

- Prepare the write-up (up to around **100 words**) for each course you are applying for. Express your passion for the course in your write-up. Include your relevant skills/activities/experiences that demonstrate your aptitude for the course
- You can prepare your write-ups in advance using the template from <https://for.edu.sg/eae-template>.

If shortlisted, prepare for an interview

- Bring along supporting documents, e.g. portfolio of related works, evidence of relevant experiences, and CCA records to the interview

What are the selection criteria?

If you are shortlisted, you will be informed to attend an interview and will be assessed through:

- Portfolio of related projects
- Participation in relevant MOE Applied Learning Modules and Applied Subjects
- Participation in work attachments, community/volunteer work, school/personal activities/projects, CCAs and competitions related to the course, such as ignITE Skills Challenge
- Aptitude tests (if applicable)

For course-specific criteria, refer to the ITE EAE application webpage.

Do my exam results matter under EAE?

After accepting the course offered under ITE EAE in Aug 2023, your GCE N-Level or O-Level exam results must meet the **Minimum Entry Requirements (MER)** of the course. Otherwise, the conditional course offer under ITE EAE will be revoked.

What is the timeline?



Step 1: Application Phase (24 May - 30 May 2023)

Interested students can submit their applications on www.ite.edu.sg/apply-eae.



Step 2: Interview Phase (20 Jun - 27 Jul 2023)

Shortlisted applicants will have to attend interviews and/or aptitude tests/portfolio assessment. The interviews may be conducted either on-campus or virtually via Microsoft Teams.



Step 3: Offer & Acceptance Phase (21 Aug - 25 Aug 2023)

Conditional offers will be made to successful applicants.

Applicants are required to accept the offer on ITE website by 25 Aug 2023.

Applicants who accept the offer will be guaranteed a place in ITE if their GCE N-Level or O-Level exam results meet the MER of the offered course.



Step 4: Withdrawal Phase (28 Aug - 4 Sep 2023)

Applicants who accept the conditional offer but later wish to withdraw from ITE EAE must submit their withdrawal request to training@ite.edu.sg by 4 Sep 2023.

Applicants who have accepted the ITE EAE offer and do not withdraw by the deadline, will have the conditional offers automatically confirmed if they meet the MER of the offered courses after the GCE N-Level or O-Level results are released.

Dates indicated are tentative and subject to change. Please refer to www.ite.edu.sg for the latest schedule.

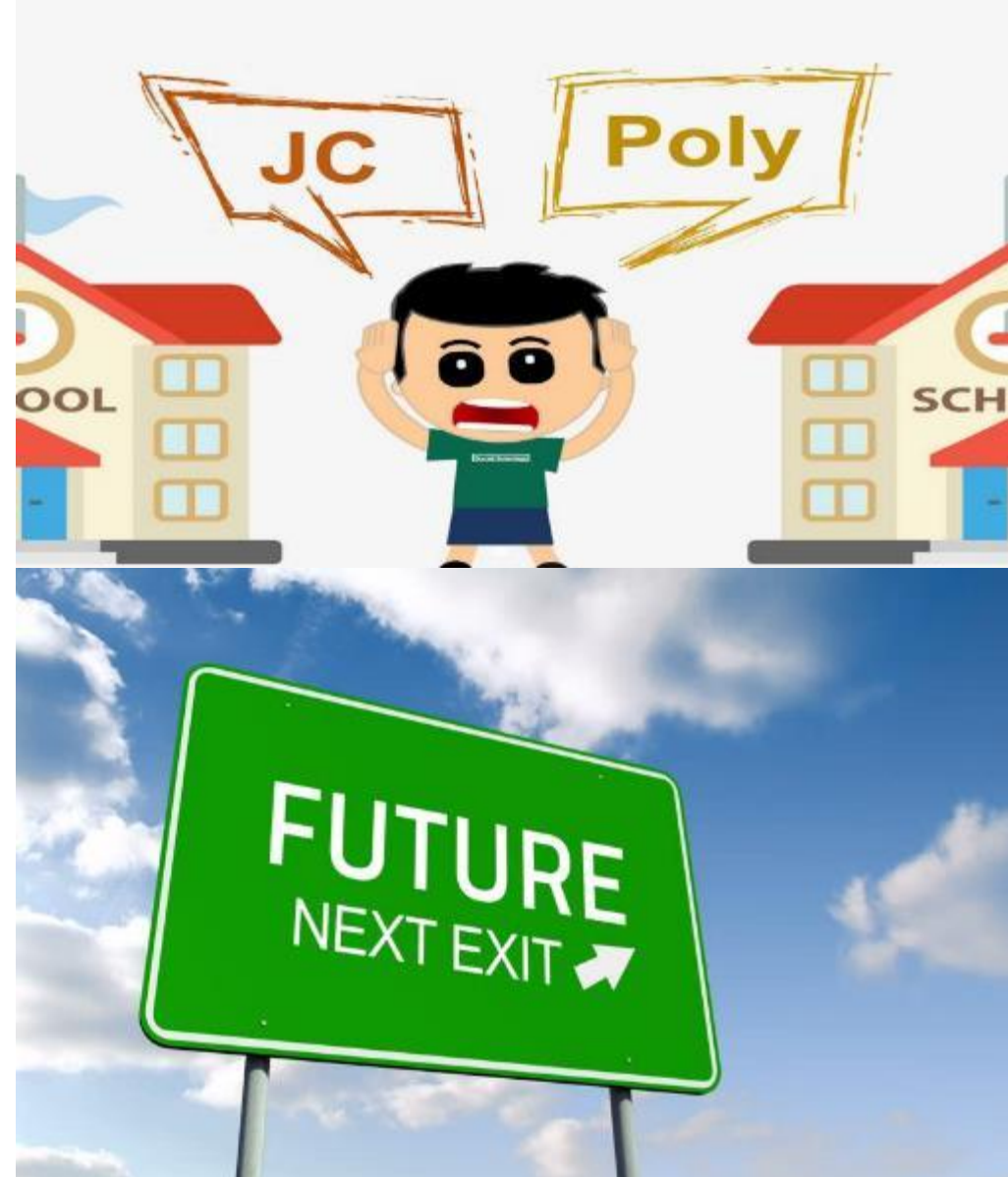
Where should they go after they graduate?

Education in the JCs and MI focuses on **self-development**, **critical thinking**, **intellectual analysis**, and **communications and interpersonal skills**. The JCs and MI emphasise **holistic development** through various **elective programmes** and **Co-curricular Activities (CCAs)**.

VS

Polytechnic & ITE education places a strong emphasis on **practice-based learning**. **Work attachments with industry partners** are part of the curriculum. These work attachments will enable you to gain valuable on-the-job experience and provide you with opportunities to work with industry experts.

Polytechnics & ITEs also emphasise the acquisition of certain important life skills. These are the key **skills of communication and presentation as well as problem-solving skills**.



What is Your Child's/Ward's Decision?

- Are their decisions made based on their interests, strengths and aspirations, while considering current and future career opportunities? Refer to their personal outcomes under RIASEC profile (found in the My SkillsFuture Portal).
- Are they willing to take ownership of their goals and take steps towards fulfilling them?
- Are they willing to keep learning and be resilient?
- Are they aware of their current progress (as compared to their perceived progress)?



Support from Parents/Guardians

- ✓ Partner with school
- ✓ Close monitoring of student's progress and health
- ✓ Eliminate procrastination
- ✓ Support for school programmes
- ✓ Motivate and encourage your child/ward
- ✓ **School attendance**



You Can
[BE]
WHAT YOU
Want to!

decide
commit
succeed

PEOPLE OFTEN SAY THAT
MOTIVATION
DOESN'T LAST.
WELL, NEITHER DOES
BATHING THAT'S WHY
WE RECOMMEND
IT DAILY.

Behappy.me

BELIEVE
IN YOURSELF

&
ALL THAT YOU ARE

KNOW THAT THERE IS
SOMETHING INSIDE YOU

**THAT IS GREATER
THAN ANY OBSTACLE**

You can
LEARN,
something new
EVERYDAY
If you
LISTEN

A photograph of dandelion seeds against a clear blue sky. One large, fluffy seed head is in the lower right, with several seeds drifting away towards the upper left. The text is overlaid on the left side of the image.

"A goal
without
a plan is
just a wish."

Antoine de Saint-Exupery

Dear Parent/Guardian, please continue to encourage/remind/motivate your child to...

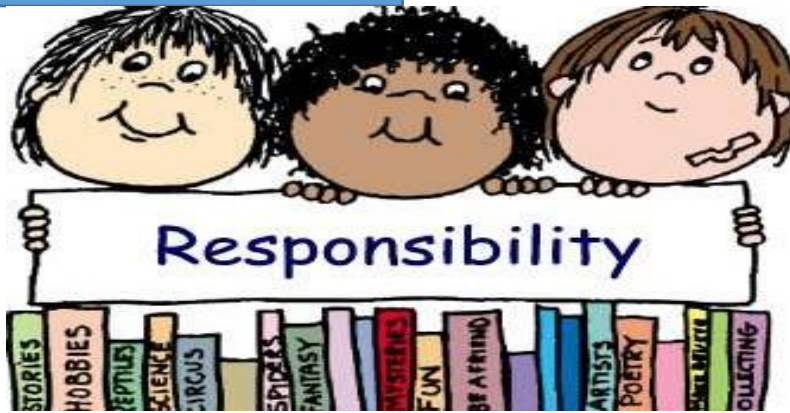


Make wise choices!

Have the correct attitude!



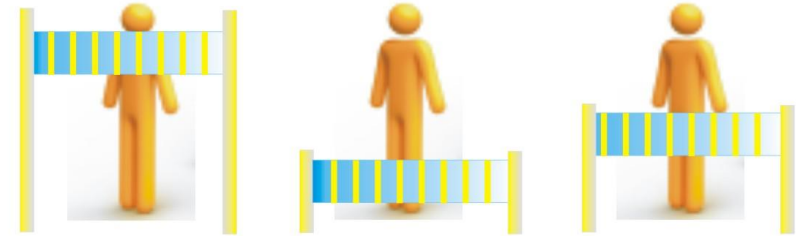
Be responsible for their
own learning



Deal with
procrastination



Set challenging but
attainable goals



Too High

Too Low

Just Right!

GOAL-SETTING

The Iceberg Illusion

Success
is an
iceberg

SUCCESS!

WHAT PEOPLE
SEE

Persistence



Failure



Sacrifice



Disappointment



WHAT PEOPLE
DON'T SEE

Dedication



Hard work



Good habits



@sylviaaduckworth

NO. OF DAYS TO GCE 'O' LEVELS (Including Sat and Sun)

258 (as at 2 Feb 2024)

258/6 subjects = 43 days; 258/7 subjects = 36 days; 258/8 subjects = 32 days

43 or 36 or 32 days per subject ... divide by no. of topics?



FORM A: Having Options vs. Just Settling for What's Given

2015 JOINT ADMISSIONS EXERCISE (JAE) Form A

Name Address	JAE PIN Centre Index No School Code : 7310	JAE PIN.
-----------------	--	----------

There will be no registration after DD/MM/YYYY 04:00PM.

Your GCE 'O' Level Examination results are as follows:
 11 = A1 63 = A2 41 = A1 42 = A2 44 = A1 45 = A1
 46 = A1 22 = A2 CCA = A1

Subject code and grade based on your examination results.

Your aggregate scores are as follows:
 JC : L1R5 = 07
 MI : L1R4 = 05
 Poly : ELR2B2-A = 06 ELR2B2-B = 06 ELR2B2-C = 05 ELR2B2-D = 05
 ITE : ELB4-A = 05 ELR1B3-B = 05 ELR2B2-C = 05

Aggregate types.

Based on the 2014 GCE 'O' Level Examination results, you are eligible to apply for all courses offered by JC (2-Year Duration) and MI (3-Year Duration). The JC and MI course codes can be found in the Joint Admissions Exercise Booklet. You are also eligible for the Polytechnic / ITE courses listed below. Though you are eligible for these courses, admission to a course under this exercise is based on merit, your indicated choices and vacancies available.

Polytechnic / ITE courses you are eligible for:

C40 C41 C42 C43 C45 C46 C47 C48 C49 C50 C51 C52 C53 C54 C55 C56 C57 C58 C59 C60
 C61 C62 C63 C64 C65 C66 C67 C68 C69 C70 C71 C72 C73 C74 C75 C78 C80 C81 C83 C85
 C89 C93 C94 C96 C97 C98 C99 N40 N41 N42 N43 N44 N45 N48 N49 N50 N51 N53 N54 N55
 N56 N57 N59 N60 N61 N64 N65 N66 N67 N68 N69 N70 N71 N72 N73 N74 N75 N76 N77 N78
 N79 N80 N81 N82 N83 N84 N85 N86 N87 N88 N89 N90 N91 N92 N93 N94 R11 R12 R13 R14
 R16 R17 R18 R19 R20 R21 R22 R23 R24 R25 R26 R27 R28 R29 R31 R32 R33 R34 R35 R36
 R37 R39 R40 R41 R42 R43 R44 R45 R46 R47 R48 R49 R50 R51 R52 R53 R54 R55 S33 S34
 S35 S36 S37 S38 S39 S40 S41 S42 S43 S44 S45 S46 S47 S48 S50 S51 S53 S54 S55 S56
 S58 S63 S64 S66 S67 S68 S69 S70 S71 S72 S73 S74 S75 S76 S82 S86 S88 S89 S90 S91
 S93 S94 S95 S97 S98 S99 T01 T02 T04 T05 T06 T08 T09 T13 T15 T17 T18 T20 T22 T23
 T25 T26 T27 T28 T29 T30 T31 T33 T35 T36 T37 T38 T39 T40 T42 T43 T44 T45 T46 T47
 T48 T49 T50 T51 T52 T53 T54 T55 T56 T57 T58 T59 T60 T61 V10 V11 V13 V18 V19 V21
 V26 V27 V28 V29 V30 V35 V39 V40 V42 V44 V45 V47 V49 V52 V54 V55 V56 V59 V62 V64
 V65 V66 V67 V68 V69 V70 V71 V72 V73 V74 V75 V76 V77 V78 V81 V82 V83 V84 V85 V86
 V87 V88 V89 V90 V91 V92 V93 V94 V95 V96 V99

Note:

- You can also apply for other suitable courses for GCE 'O' students, offered by ITE. Please see ITE's admission booklet on JIE.

2015 JOINT ADMISSIONS EXERCISE (JAE) Form A

Name Address	JAE PIN Centre Index No School Code : 7310	JAE PIN.
-----------------	--	----------

There will be no registration after DD/MM/YYYY 04:00PM.

Your GCE 'O' Level Examination results are as follows:
 11 = A1 63 = A2 41 = A1 42 = A2 44 = A1 45 = A1
 46 = A1 22 = A2 CCA = A1

Subject code and grade based on your examination results.

Your aggregate scores are as follows:
 ITE : ELB4-A = 05 ELR1B3-B = 05 ELR2B2-C = 05

Aggregate types.

Polytechnic / ITE courses you are eligible for:

C40 C41 C42 C43 C45 C46 C47 C48 C49 C50 C51 C52 C53 C54 C55 C56 C57 C58 C59 C60

Note:

- You can also apply for other suitable courses for GCE 'O' students, offered by ITE. Please see ITE's admission booklet on JIE.

**WILL IT BE
EASY?**
NOPE.

WORTH IT?
ABSOLUTELY.

**IT COMES DOWN
TO ONE SIMPLE
THING:**

**HOW BAD DO YOU
WANT IT?**

Let's Partner
to Support Your Child/Ward
to Excel and
to Pursue Their Aspirations



BEDOK SOUTH SECONDARY SCHOOL

Secondary 4 & 5
Parent Engagement Session

02 February 2024, Friday