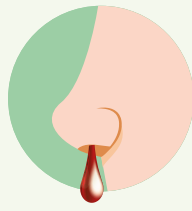


SELF – SWAB INSTRUCTIONS

FOR BD VERITOR ANTIGEN RAPID TEST



**DO NOT
PROCEED IF:**



Nosebleed
in the past
24 hours



Nasal surgery
in the last
4 weeks



Facial injury
in the last
8 weeks

SWABBING PROCEDURE

1 Please clean your hands before starting the test.



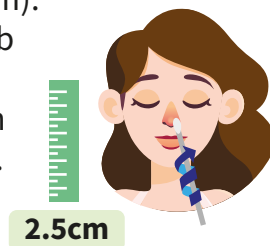
2 Before starting the test, please take out one swab stick, one extraction buffer tube and one test cartridge. Loosen the cap of the extraction buffer tube and take out the test cartridge from its packaging.



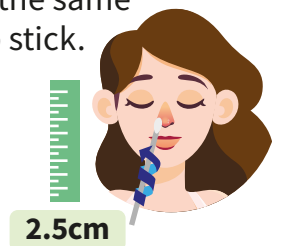
3 Remove swab stick from package.



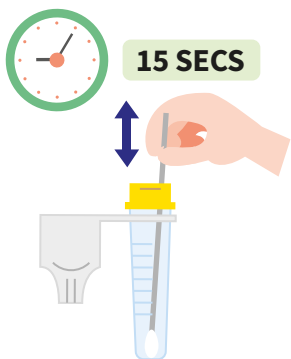
4 Insert the swab stick into the nostril (~2.5cm). Twirl the swab stick 5 times and leave it in for 5 seconds.



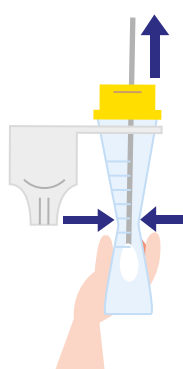
5 Repeat for the other nostril with the same swab stick.



6 Insert swab stick into the extraction buffer tube to mix. Plunge the swab stick up and down for 15 seconds.



7 Squeeze the extraction buffer tube while extracting the swab stick.



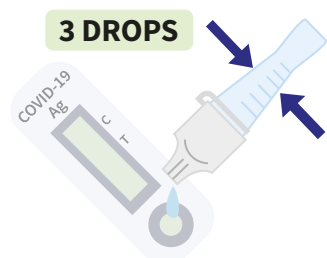
8 Close the cap of the extraction buffer tube firmly. You should hear a “click” sound.



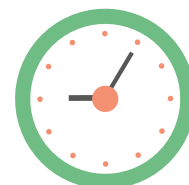
9 Use your finger to gently tap the side of the tube a few times. This helps to mix the solution.



10 Place 3 drops onto the sample well of the test cartridge.



11 Wait for 15mins before checking the results on the test cartridge. Please keep the cartridge on a flat surface during this time.



15 MINS

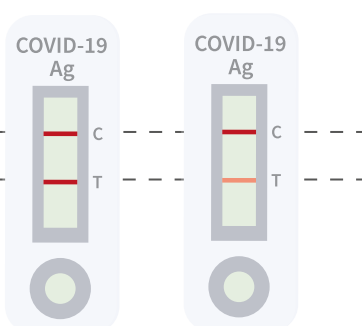
12 Read the results on the test cartridge.
If you see a line appearing at both the “C” and the “T” position, this indicates a positive test. Please see your doctor.

If you see a line appearing at only the “C” position, this indicates a negative test.

If you see a line appearing only at the “T” position or no lines appear at all, the test is invalid. Please repeat the test with a new test kit.

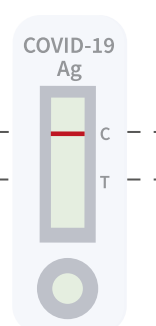
POSITIVE

“C” Control Line
“T” Test Line



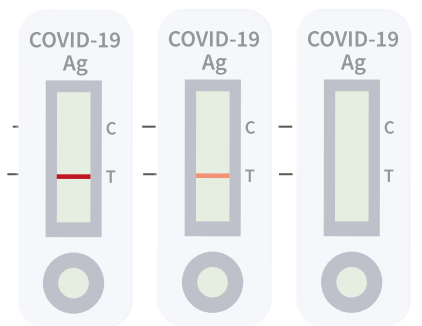
NEGATIVE

“C” Control Line
“T” Test Line



INVALID

“C” Control Line
“T” Test Line



13 Dispose all used items in the test kit into one plastic bag and tie it up with a rubber band or cable tie. Place the tied bag into another plastic bag and tie the second plastic bag with a rubber band or cable tie. Throw it into the rubbish chute immediately.



14 Clean your hands after the test.



You may also refer to this QR code for video instructions



<https://go.gov.sg/ant-instructions>



MINISTRY OF HEALTH
SINGAPORE