



Your project falls under the category of RENOVATION WORKS

My firm carries out **renovation projects** that do not require building plan submission.

(as of 4 June 2021)

STEP 1

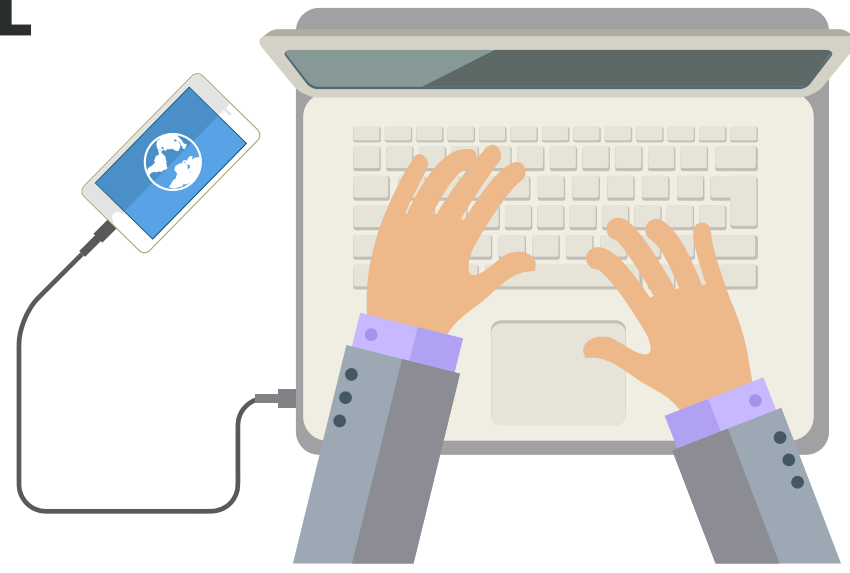
CHECK IF YOUR COMPANY NEEDS TO APPLY FOR APPROVAL

Your company employs only Singapore Citizens, Singapore Permanent Residents and Employment Pass holders:

- Apply for 'General Exemption' with MTI: <https://go.gov.sg/general-exemption>. Application to BCA is not required.

Your company employs foreign workers registered under Construction Account:

- Application to BCA is not required.*^



* BCA has given permission for firms with Construction Account workers to resume work with effect from 10 August 2020, provided that work is not carried out at construction sites / supply work premises, and subject to conditions set out in <https://go.gov.sg/bca-circular-resumption-safe-accom>.

^ You are required to declare your manpower details using the "Permissions and Manpower Declaration" link at <https://covid.gobusiness.gov.sg>

STEP 2

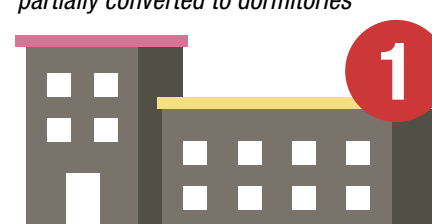
CHECK THAT COMPANY MEETS COVID-SAFE RESTART CRITERIA

2A: ACCOMMODATION – Where should workers be staying?

Workers deployed for renovation projects should stay in cleared accommodation.

FACTORY-CONVERTED DORMITORIES (FCDs)

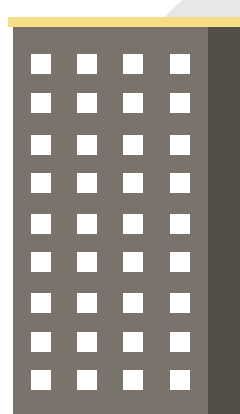
Industrial or warehouse developments partially converted to dormitories



2

PURPOSE-BUILT DORMITORIES (PBDs)

Dormitories specifically built to house foreign workers



3

PRIVATE RESIDENTIAL PREMISES (PRPs)



4

HDB FLATS

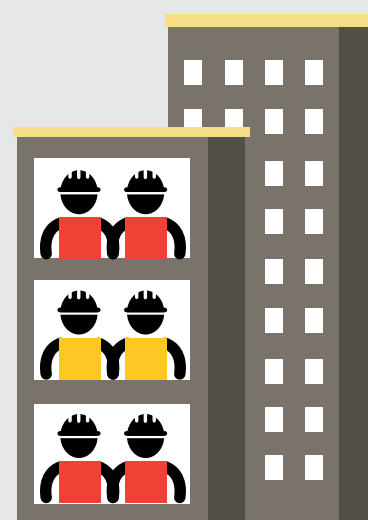


2A: ACCOMMODATION – How should I segregate my workers?

- Stay in HDB/PRP dedicated for their **EMPLOYERS**



- Stay in PBD/FCD:
 - Cohorted according to employer by same room
 - Max of 2 employers per room
 - Employers with multiple rooms to co-locate these rooms on the same floor



Workers working on non-construction sites and construction sites should not stay together.

2B: TRANSPORTATION – How should my workers go to work?

Provide point-to-point transportation for your construction workers who are Work Permit or S Pass holders, with staggered pick up/drop off and ensure your workers comply with relevant Safe Management Measures (SMMs).

Workers Accommodation Type	Work Pass includes all Foreign Employees holding Work Permits or S Passes	Workplace	Require Dedicated Transport	Allowed to take Public Transport (MRT, Bus)	Allowed to take Private Hire Vehicles (PHVs), Taxis, Walk/Cycle	Allowed to commute by personal motorcycles or cars
HDB/PRP	S Pass holder	Non-Construction site / Construction site	No Restriction			
	Work Permit	Non-Construction site	✗	✓	✓	✓
		Construction site (incl. site office)	✓ ^[2]	✗		
PBD/FCD/GSFs ^[1]	S Pass holder & Work Permit	Regardless of place of work	✓ ^[2]	✗	✓ ^[3]	✗

^[1] GSFs are Government Source Facilities set by government for workers who have recovered from COVID-19 or decanted from dormitories.

^[2] Workers residing in the same accommodation can travel in the same vehicle to / from multiple sites in a single trip.

^[3] Employers must work with dormitory operators to plan and coordinate pick-up times, pre-arrange and pre-pay for taxis/ PHVs and comply with relevant SMMs.

2C: WORKSITE – How do I ensure safe entry to the site?

Register for TraceTogether-only SafeEntry.

This needs to be set up at the entry point of your site.



2D: WORKERS – How should I ensure workers are ready to start work?



Ensure your workers install TraceTogether, SGWorkPass and FWMOMCare App



Update workers' accommodation with **MOM**. Ensure that particulars of all workers/employees who work on/ visit site are submitted for approval to resume work.

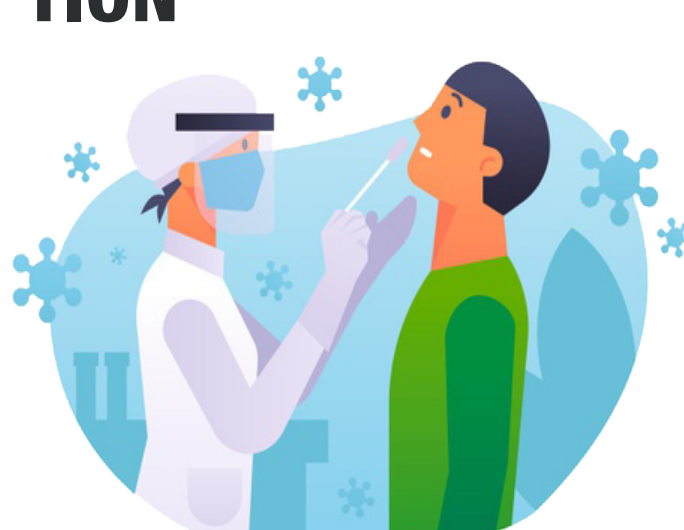
This includes full and part-time employees who work in site offices or are project engineers/managers/QPs



STEP 3

PREPARE FOR WORK RESUMPTION

How should I prepare my workers for work resumption?



SWAB TEST

- Only required for S Pass and WP holders under construction sector.
- Employers are to book the swab test appointments for your employee(s) on the Swab Registration System (SRS) via <https://swab.hpb.gov.sg/ext/login.aspx> (Please refer to <https://go.gov.sg/bca-circular-srs> for more information).
- Employees are required to go for periodic routine swab test.
- Work pass holders must ensure their **AccessCode** is 'GREEN' to start work.

Staggered Rest Day

- Employers should
 - Log in to **MOM's Safe@Work** system to select a rest day between Monday to Saturday for workers
 - Inform workers of their designated rest day
 - Make necessary arrangements to help your workers adjust to the designated rest day

For details: www.mom.gov.sg/eservices/services/safe-work and www.mom.gov.sg/covid-19/frequently-asked-questions

For renovation firms who need their workers to rest on Sunday, submit an appeal to MOM at www.mom.gov.sg/appeal-restday

PLEASE CLICK BELOW FOR OTHER GUIDES

CONSTRUCTION PROJECTS/
SUPPLY WORK

CONSTRUCTION ACCOUNT
WORKS

LANDED HOUSING PROJECTS



Contact BCA at bca.gov.sg/feedbackform/



Visit BCA's website at www1.bca.gov.sg/COVID-19



Subscribe to BCA's Telegram channel at www.t.me/BCASingapore