

## Your project falls under the category of **CONSTRUCTION PROJECTS/ SUPPLY WORK**

I am the developer / main contractor / builder / owner of works to be carried out at a:

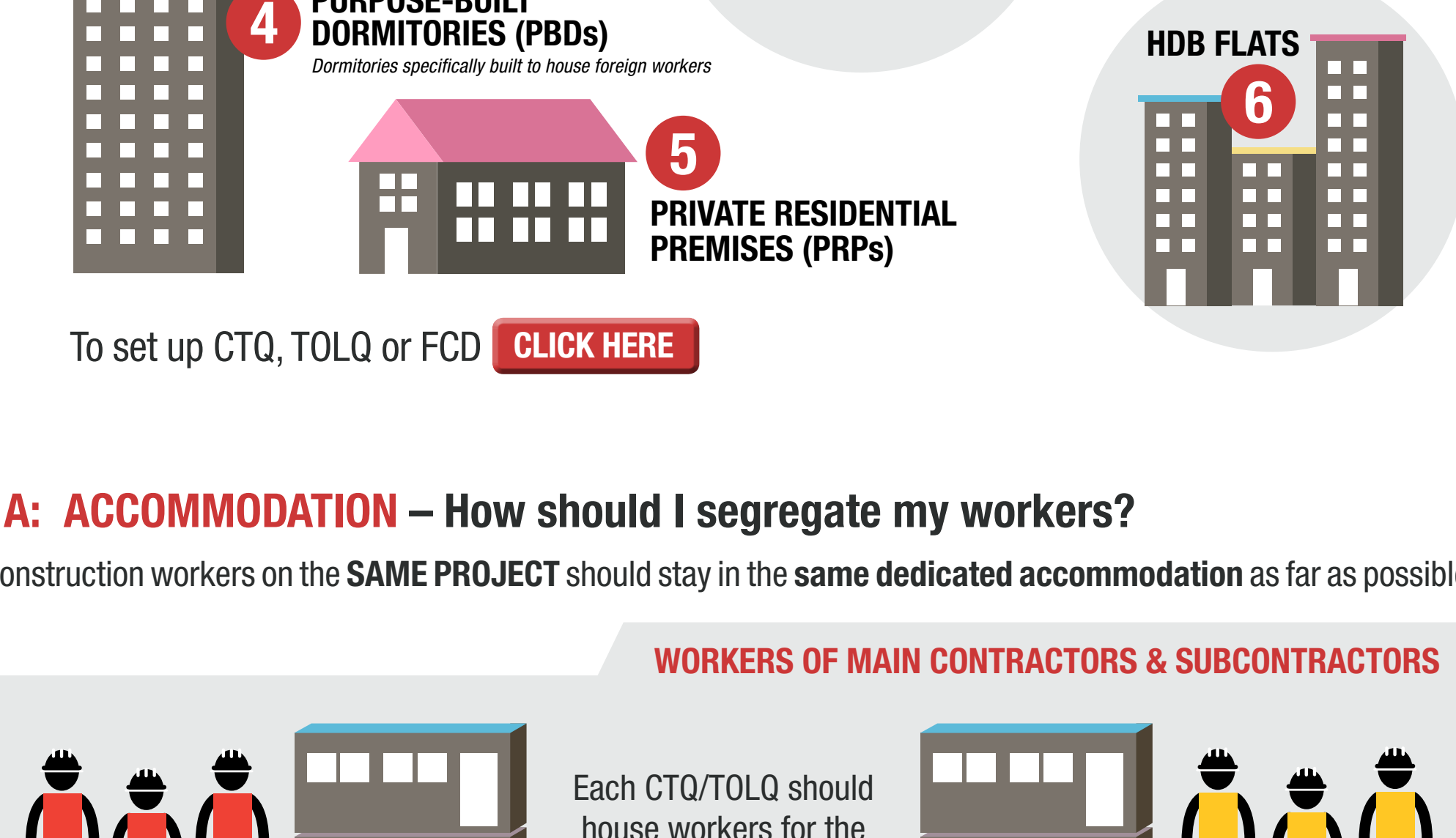
- Construction site
- Precast concrete yard / ICPH
- Prefab factory
- RMC plant / Sand and aggregate terminal

(as of 10 June 2021)

## **STEP 1** CHECK THAT YOUR PROJECT MEETS COVID-SAFE RESTART CRITERIA

### **1A: ACCOMMODATION** – Where should workers be staying?

All workers deployed on site should stay in dedicated accommodation cleared of COVID-19. These include cleared:

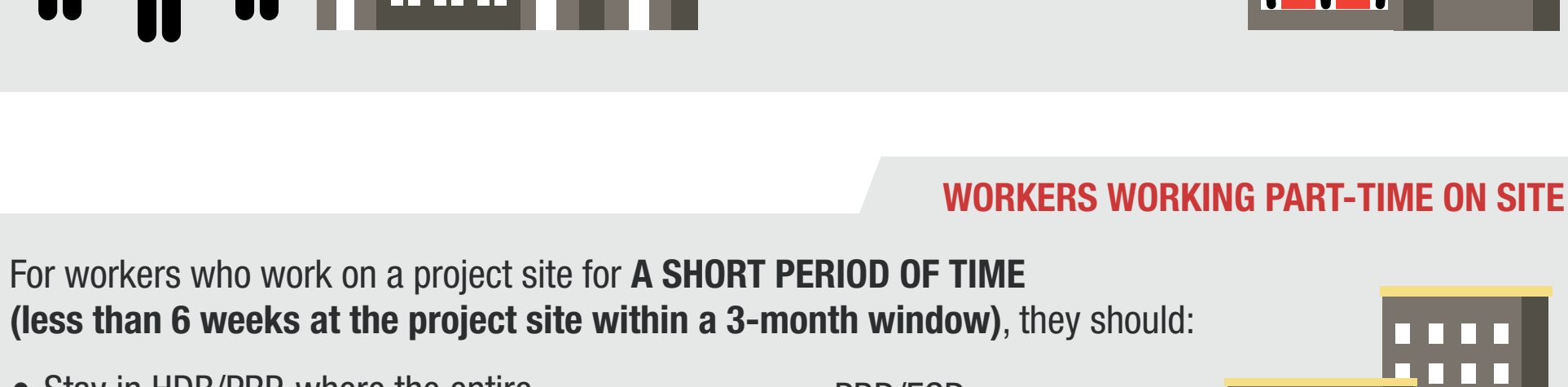


To set up CTQ, TOLQ or FCD [CLICK HERE](#)

### **1A: ACCOMMODATION** – How should I segregate my workers?

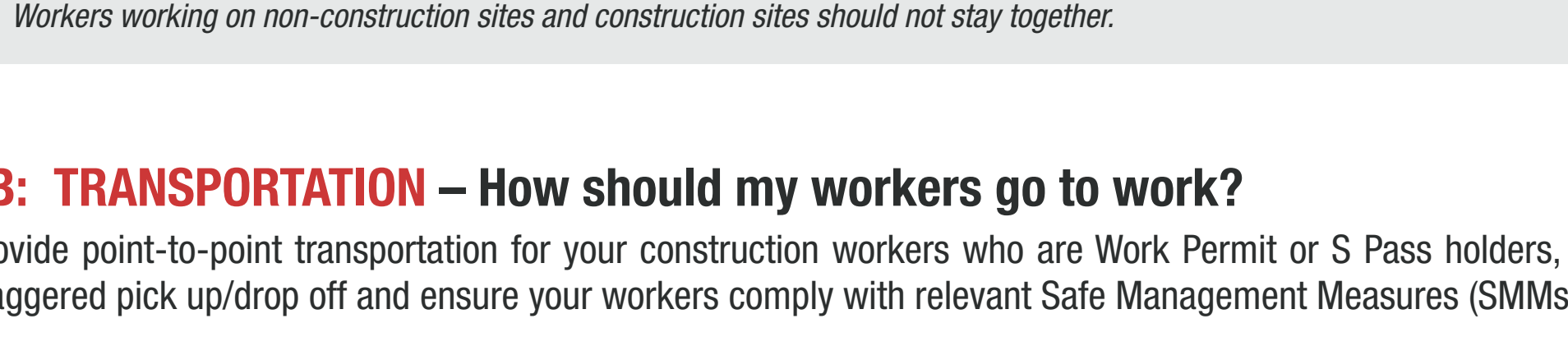
Construction workers on the **SAME PROJECT** should stay in the **same dedicated accommodation** as far as possible.

#### **WORKERS OF MAIN CONTRACTORS & SUBCONTRACTORS**



If it is not possible to house all workers in the same CTQ/TOLQ, they can be housed in:

- HDB/PRP, where the entire unit is occupied by workers of the **SAME PROJECT**
- PBD/FCD:
  - Minimally cohorted according to employer by room
  - 1 employer per room
  - Employers with multiple rooms to co-locate these rooms on the same floor



Workers working on non-construction sites and construction sites should not stay together.

#### **WORKERS WORKING PART-TIME ON SITE**

For workers who work on a project site for **A SHORT PERIOD OF TIME (less than 6 weeks at the project site within a 3-month window)**, they should:

- Stay in HDB/PRP, where the entire unit is occupied by workers of the **SAME EMPLOYER**
- PBD/FCD:
  - Cohorted according to employer by room
  - Max of 2 employers per room
  - Employers with multiple rooms to co-locate these rooms on the same floor



Workers working on non-construction sites and construction sites should not stay together.

### **1B: TRANSPORTATION** – How should my workers go to work?

Provide point-to-point transportation for your construction workers who are Work Permit or S Pass holders, with staggered pick up/drop off and ensure your workers comply with relevant Safe Management Measures (SMMs).

Workers Accommodation Type	Work Pass includes all Foreign Employees holding Work Permits or S Passes	Workplace	Require Dedicated Transport	Allowed to take Public Transport (MRT, Bus)	Allowed to take Private Hire Vehicles (PHVs), Taxis, Walk/Cycle	Allowed to commute by personal motorcycles or cars
HDB/PRP	S Pass holder	Non-Construction site / Construction site	No Restriction			
		Non-Construction site	✗	✓	✓	✓
	Work Permit	Construction site (incl. site office)	✓ <sup>[2]</sup>	✗		
PBD/FCD/CTQ/TOLQ/GSFs <sup>[1]</sup>	S Pass holder & Work Permit	Regardless of place of work	✓ <sup>[2]</sup>	✗	✓ <sup>[3]</sup>	✗

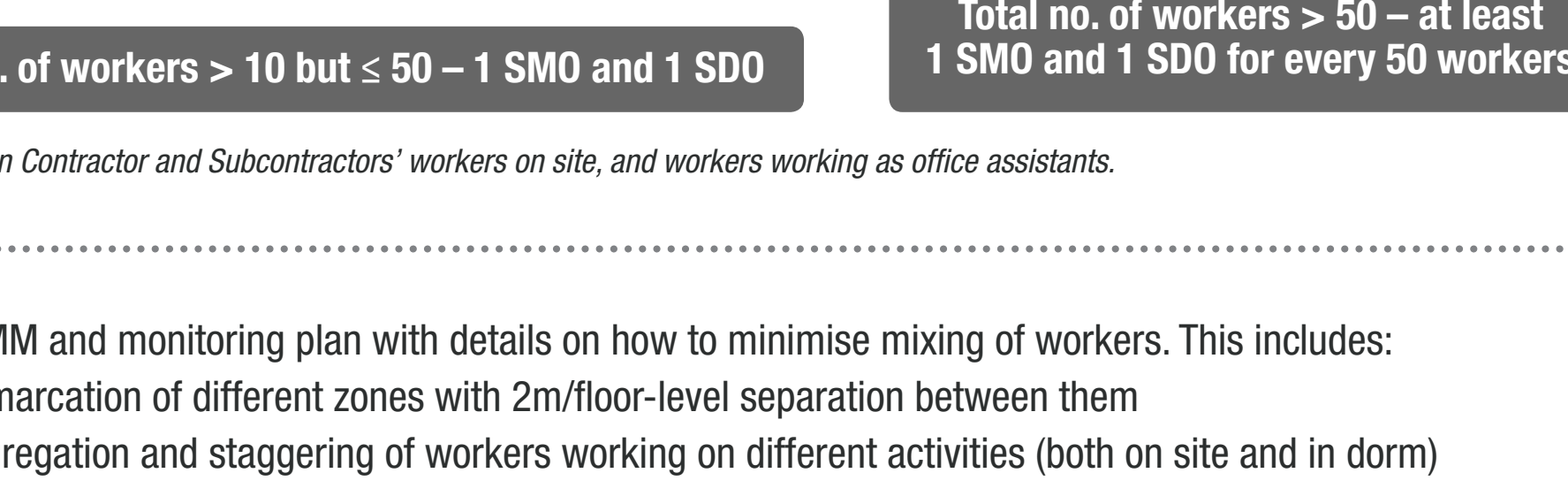
<sup>[1]</sup> GSFs are Government Source Facilities set by government for workers who have recovered from COVID-19 or decanted from dormitories.

<sup>[2]</sup> Workers residing in the same accommodation can travel in the same vehicle to / from multiple sites in a single trip.

<sup>[3]</sup> Employers must work with dormitory operators to plan and coordinate pick-up times, pre-arrange and pre-pay for taxis/ PHVs and comply with relevant SMMs.

### **1C: WORKSITE** – How do I plan Safe Management Measures (SMM) for the site?

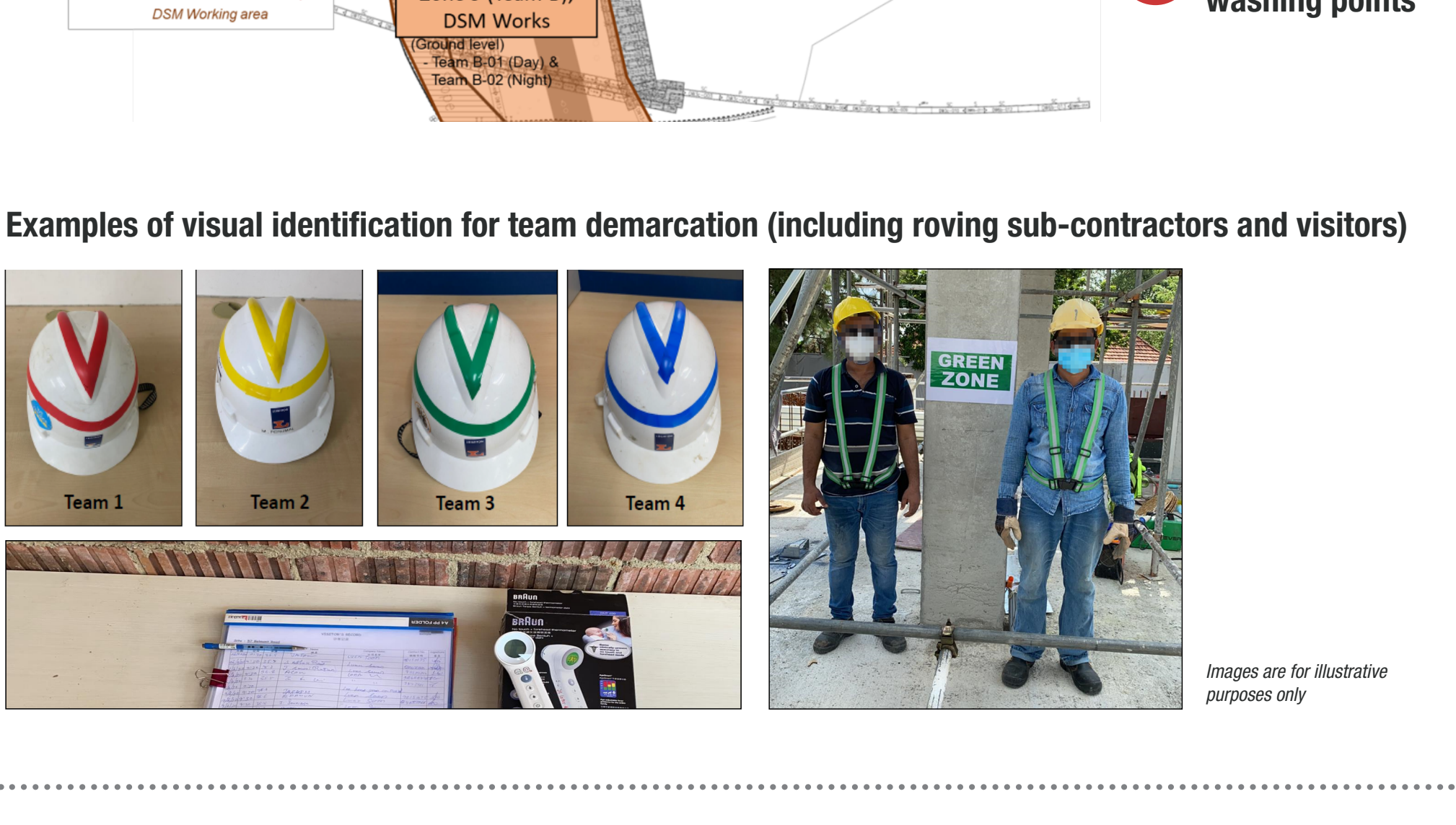
Appoint full-time Safe Management Officers (SMO) and Safe Distancing Officers (SDO) according to the ratio of workers as stipulated in Covid-Safe Worksite Criteria. SMO/SDO can play dual roles as e.g. WSHO, Safety Coordinator, Foreman, Supervisor.



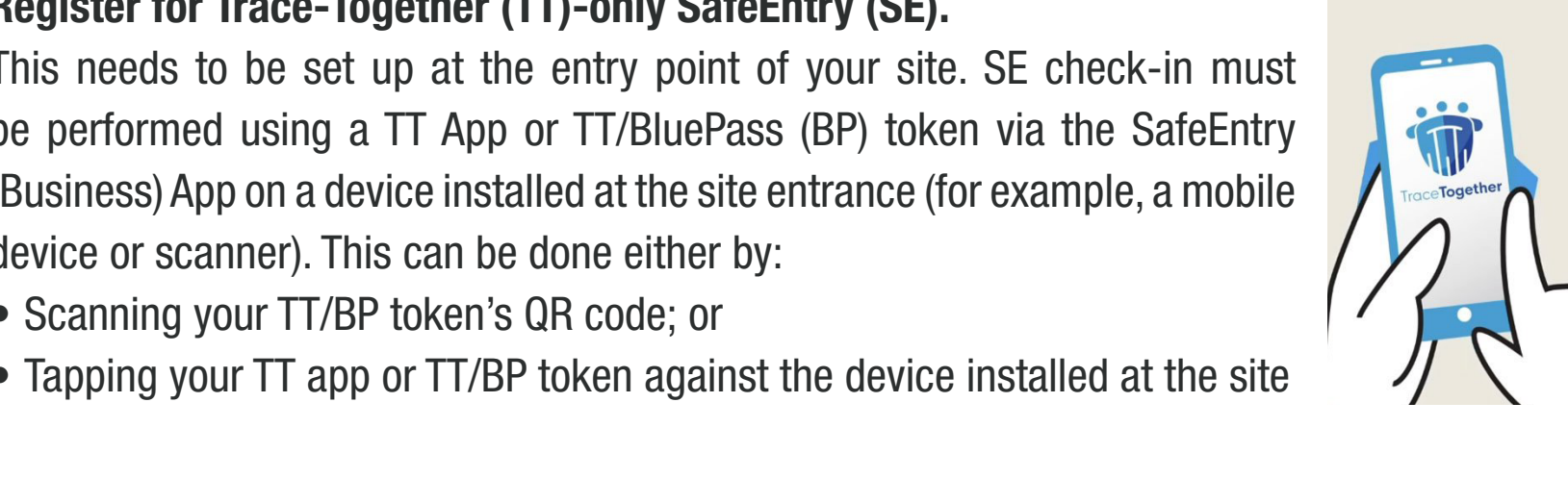
\* Includes Main Contractor and Subcontractors' workers on site, and workers working as office assistants.

Develop SMM and monitoring plan with details on how to minimise mixing of workers. This includes:

- Clear demarcation of different zones with 2m/floor-level separation between them
- Clear segregation and staggering of workers working on different activities (both on site and in dorm)



Examples of visual identification for team demarcation (including roving sub-contractors and visitors)



Images are for illustrative purposes only

### **WORKSITE** – How do I ensure safe entry to the site?

Register for Trace-Together (TT)-only SafeEntry (SE).

This needs to be set up at the entry point of your site. SE check-in must be performed using a TT App or TT/BluePass (BP) token via the SafeEntry (Business) App on a device installed at the site entrance (for example, a mobile device or scanner). This can be done either by:

- Scanning your TT/BP token's QR code; or
- Tapping your TT app or TT/BP token against the device installed at the site



### **1D: WORKERS** – How should I ensure workers are ready to start work?



## **STEP 2** APPLY TO BCA TO RESTART WORK

### **Who should make this application?**

**CONSTRUCTION PROJECTS:**

Main Contractors / Builders to consolidate information from Sub-Contractors, and submit an application jointly with Developers via <https://go.gov.sg/bca-construction-supply>

**SUPPLY WORKS:**

Owner to submit application via <https://go.gov.sg/bca-construction-supply> before works can restart.

### **After obtaining BCA's approval to start work**

What should I do?



#### **BOOKING OF SWAB TEST**

- Employers are to book the swab test appointments for your employee(s) on the Swab Registration System (SRS) via <https://swab.hpb.gov.sg/ext/login.aspx> (Please refer to <https://go.gov.sg/bca-circular-srs> for more information).
- Employees are required to go for periodic routine swab test.
- Work pass holders must ensure their AccessCode is 'GREEN' to start work.

#### **Staggered Rest Day**

- MOM will inform the main contractor on rest day assigned to project
- Employers should
  - Check with main contractor on rest day assigned to project (if company works under a Main Contractor)
  - Log in to MOM's Safe@Work system to update or verify
  - Inform workers of their designated rest day
  - Make necessary arrangements to help your workers adjust to the designated rest day

For details: [www.mom.gov.sg/eservices/services/safe-work](http://www.mom.gov.sg/eservices/services/safe-work) and [www.mom.gov.sg/covid-19/frequently-asked-questions](http://www.mom.gov.sg/covid-19/frequently-asked-questions)

### **After obtaining BCA's approval to start work**

How to submit modification?

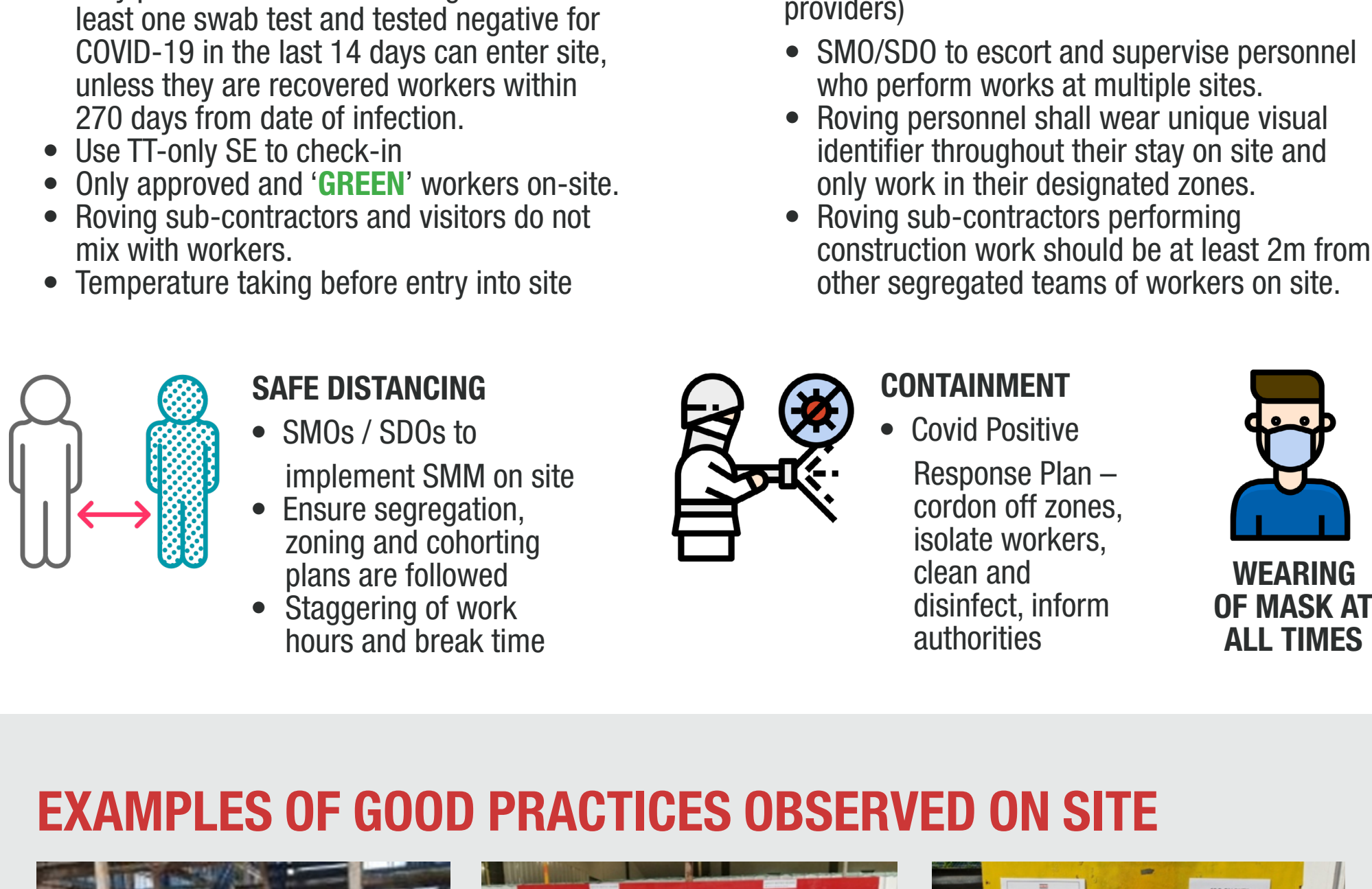
- For changes to manpower deployment/places of accommodation of workers permitted to work at the Project Site



## **STEP 3** IMPLEMENT SAFE MANAGEMENT MEASURES (AFTER RESUMING WORK)

### **Regular In-house Site Audit and Inspection**

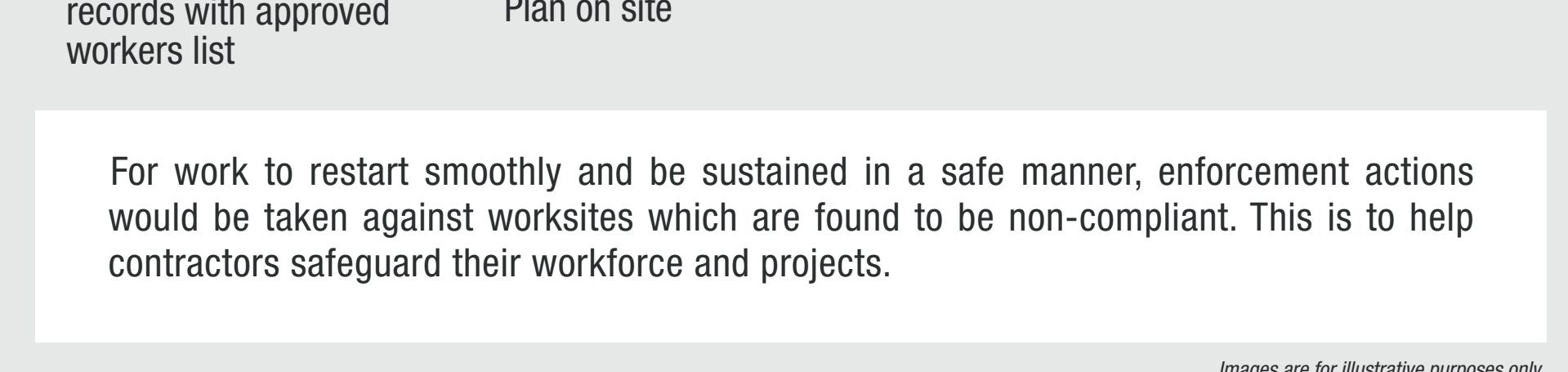
Key Things to Look Out for



### **EXAMPLES OF GOOD PRACTICES OBSERVED ON SITE**



### **EXAMPLES OF COMMON NON-COMPLIANT PRACTICES ON SITE**



For work to restart smoothly and be sustained in a safe manner, enforcement actions would be taken against worksites which are found to be non-compliant. This is to help contractors safeguard their workforce and projects.

Images are for illustrative purposes only

## **PLEASE CLICK BELOW FOR OTHER GUIDES**

[LANDED HOUSING PROJECTS](#)

[RENOVATION PROJECTS](#)

[CONSTRUCTION ACCOUNT WORKS](#)



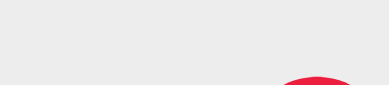
Contact BCA at [bca.gov.sg/feedbackform/](https://bca.gov.sg/feedbackform/)



Visit BCA's website at [www1.bca.gov.sg/COVID-19](http://www1.bca.gov.sg/COVID-19)



Subscribe to BCA's Telegram channel at [www.t.me/BCASingapore](https://t.me/BCASingapore)



Building and Construction Authority