



P1 Orientation for 2024 P1 Cohort

Principal's Address
Friday, 17 November 2023

Welcome to the Riverside Family !



School Leadership Team

Key Personnel for Lower Primary

Principal	: Mr Tony Tan
Vice-Principal	: Mdm Regina Khoo
Vice-Principal	: Mdm Ranuka Palanivelu
Vice-Principal (Admin)	: Ms Karin Neo
Year Head (Lower Pri)	: Ms Lim Shin Gann
Assistant Year Head	: Mdm Raudah
Senior Teacher	: Mrs Joanna Kong
Head, Student Mgt	: Mrs Christina Muru

School Profile

- ✓ First year in 2013
- ✓ Student Enrolment: 1200+ with 38 classes (7 P1, 7 P2, 6 P3, 6 P4, 6 P5, 6 P6 classes)
- ✓ Single Session
- ✓ MOE Kindergarten, MK@Riverside with 300+ children
- ✓ Staff strength: 90 teachers, 24 MKE, 20 Supporting staff



Riverside Shared Beliefs

We are not just teaching for results.
Riverians to be Joyful and Purposeful
Learners.

Every child is unique.
Every Riverian can learn and succeed.

Our work is to provide the best
possible conditions for the child to
learn and grow to the best of his/her
potential.



The Riverside Student Outcomes

★ Joyful and Purposeful Learners

★ Confident Person

★ Self-Directed Learner

★ Critical and Inventive Thinker

★ Effective Communicator

★ Collaborative Problem-Solver

★ Connected Citizens of Good Character

★ Active Contributor

★ Concerned Citizen

★ Service Leader



Knowing Every Child; Growing Every Child



The First Key to Success: Teachers and Staff

Confident. Competent. Creative. Collaborative. Caring. Committed.

Teachers as Life Coach

The Second Key to Success: Parents

Leveraging People and Partnerships

**Collaborative &
Supportive Parents**



The Second Key to Success: Parents Our Supportive and Collaborative Partners

**Some thoughts on how school and
parents can partner as ONE**



- ✓ **To yourself as parents**
- ✓ **To your child's future**
- ✓ **In your expectation**
- ✓ **To your child's teachers and school staff**

Be Kind to yourself as a parent ...

Parenting can be most challenging. We all want to be a good, sensible yet loving parent.



Learn to forgive yourself when you feel you are not doing enough.

Happy Parents Happy Child

Be Kind to your child's future ...



*You are your
child's first
teacher!*

You need to be the PARENT first, then a friend to your child.

If you want your children to learn SPARKLE Values, you need to be a role model for them.

Be Kind to your child's future ...



The best thing you can do
for your kids is to stop
doing so much for them.
Teach them how to
clean their own space,
do their own laundry,
make their own food
and think for themselves.
They'll thank you someday.

-Brooke Hampton

CreativeChild
MAGAZINE

Developing Independence

- Don't send your child's items to school, when he/she forgets them.
- Don't do your child's work for him/her.
- Don't ask teachers for reminders.

otherwise your child will feel that he/she is
incapable in your eyes

Believe in your child. He/she is more capable than you think.

Be Kind in your expectations ...

It is important that your child understand ... no matter how well they do, they are assured of your love for them and that you will not judge them for it.

Your love and encouragement will go a long way to giving them the much needed confidence to face challenges in life.



Be Kind to your child's teachers and staff ...



Respect your child's teachers and staff as you would want your child to respect you.
We are your PARTNERS, not employees.



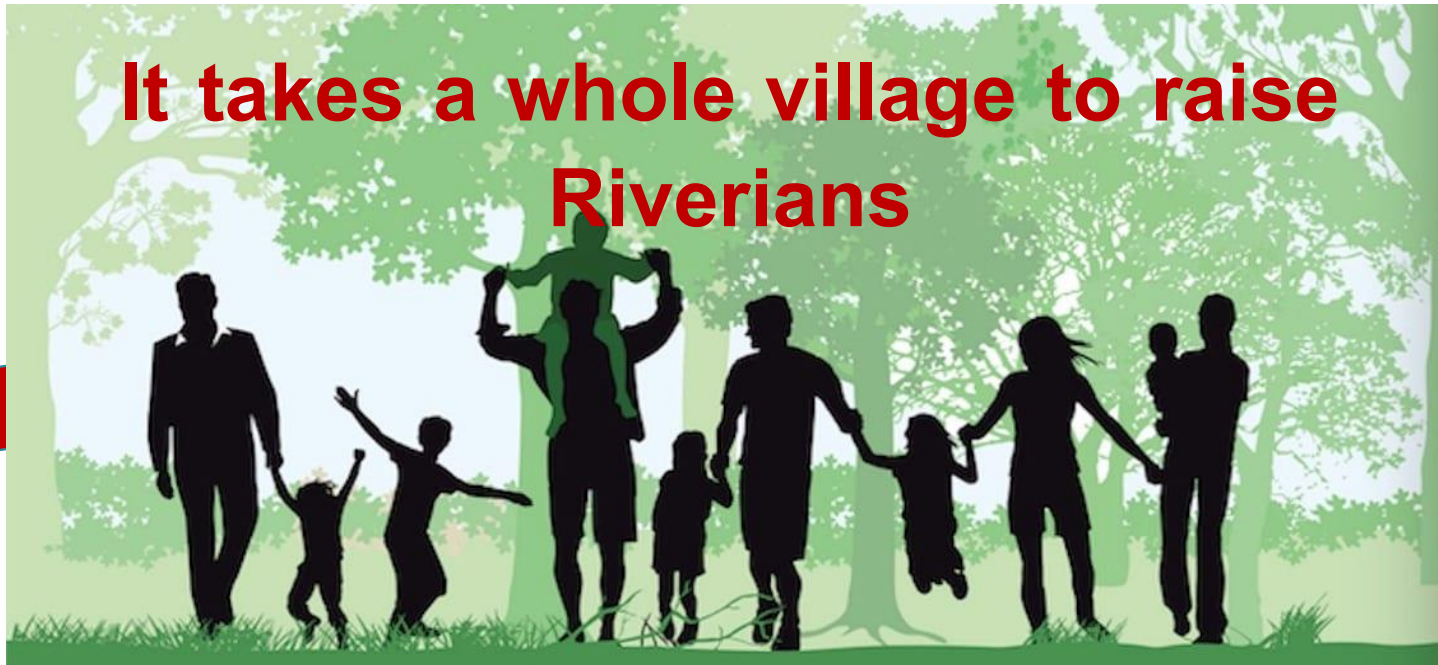
Together, let's teach our children about **Kindness** and **Practise Kindness** ourselves by:

- Helping your child to discover Joy in Learning, not be afraid of failure;
- Focusing on your child's learning journey, rather than comparing them to others;
- Encouraging your child to discover interest and strengths, find purpose in learning, enjoy the process of learning and develop dispositions for lifelong learning



Thank You!

**It takes a whole village to raise
Riverians**



**.. To
Great!**

**From
Good ..**

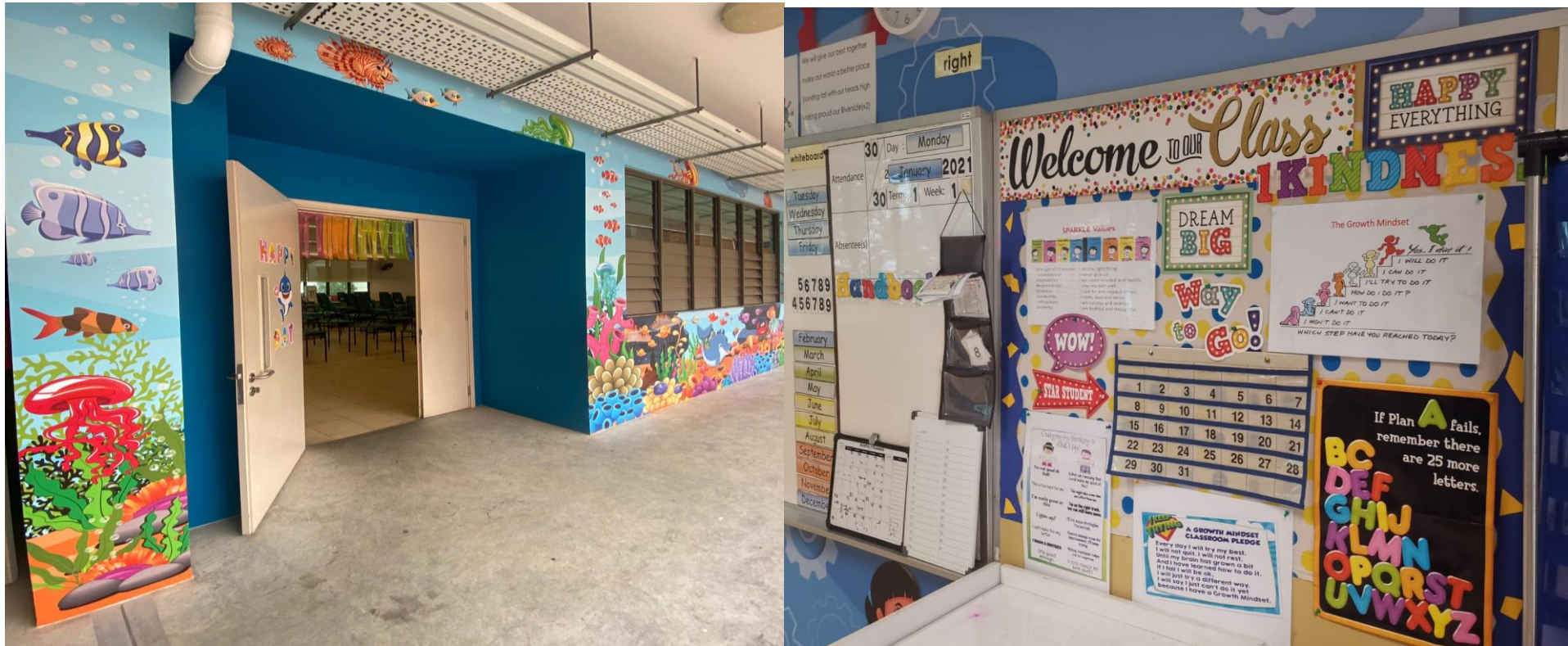


School Experience

The P1 Curriculum Experience

The Opening Days

School Experience



Riverians Belong!

Inclusiveness and Affiliation

Every Riverian belongs to a Class.

Every Riverian belongs to a House.

Every Riverian belongs to a CCA (from P3).

Every Riverian belongs to the School.

Values-Based Naming of 7 P1 Classes

Strength (of Character)

Perseverance

Adaptability

Responsibility

Kindness

Leadership

Enthusiasm

Class Distribution by

Gender

Ethnic Group

The House System

Sparkling Gems



Yellow
Topaz



Red
Ruby



House Colour = Colour of PE T-Shirt for Child
Siblings should be in the same House

Daily Routine and Weekly Schedule

Reporting Time

- All students are to be in school for attendance-taking by 7.35am.
- Students who arrive at the school foyer after 7.35am will be considered late for school.
- The flag-raising ceremony will commence at 7.40am.

Lesson Hours

- 7.45am to 1.30am daily (Staggered Dismissal: P1/2 at 1.25pm)

Daily Routine and Weekly Schedule

Recess and Snack Break

- P1 (and P4) Recess from 9.00am to 9.30am
- Midday Snack Break for 10min in the classroom between 12.00pm to 12.15pm

Afternoon Activities

- Usually none for P1

P1/P2 Curriculum Time Allocation

Subjects	Curriculum Time	Periods
English Language	7h 30min	15 (30min) periods
CL/ML/TL	6h	12 (30min) periods
CCE in CL/ML/TL	1h	2 (30min) periods
Mathematics	4h 30min	9 (30min) periods
Science	---	---
Social Studies	30min	1 (30min) period
Art	1h	2 (30min) periods
Music	1h	2 (30min) periods
PE and HE	2h	4 (30min) periods
Assembly/FTGP	1h	2 (30min) periods
PAL	1h 30min	3 (30min) periods
Recess	2h 30min	5 (30min) periods

Special Parent Engagement Events for P1

- P1 Parents Seminar in Jan/Feb
 - ✓ Briefing on The Riverside Curriculum Experience
 - ✓ Getting to Know my Child's Class Routines
- Parent-Teacher Conference (PTC) in May

CCA Sports	CCA Arts	CCA Clubs	CCA Uniformed Groups
<ul style="list-style-type: none"> • Badminton • Basketball • Floorball • Football • Netball • Track & Field 	<ul style="list-style-type: none"> • Choir • Design • Modern Dance • String Ensemble • Theatre • Visual Arts 	<ul style="list-style-type: none"> • Chefs Club • Environmental Science Club • PLAY Club 	<ul style="list-style-type: none"> • Scouts

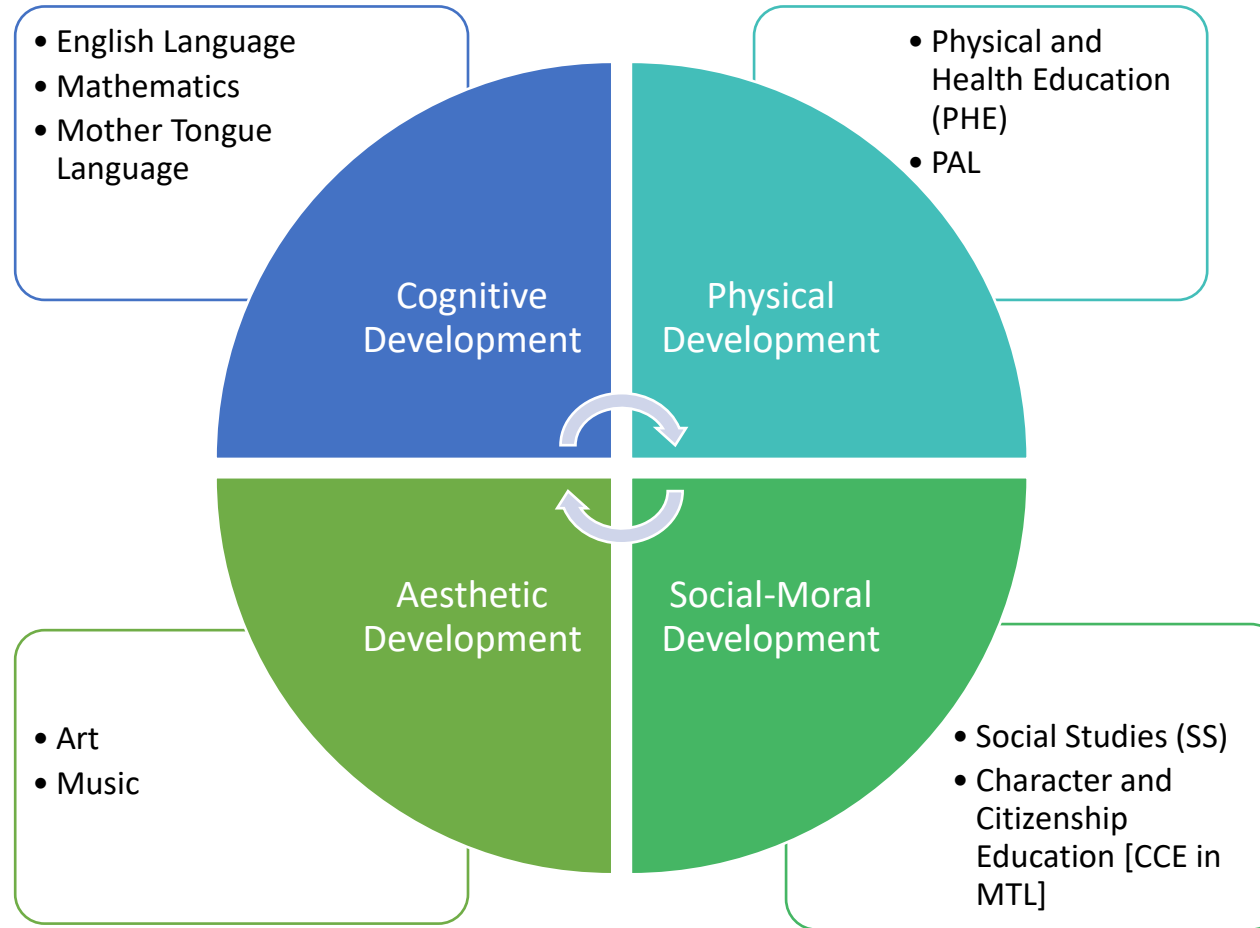


The P1 Curriculum Experience

Confidence, Curiosity, Communication, Cooperation



The P1 and P2 Curriculum



Notes

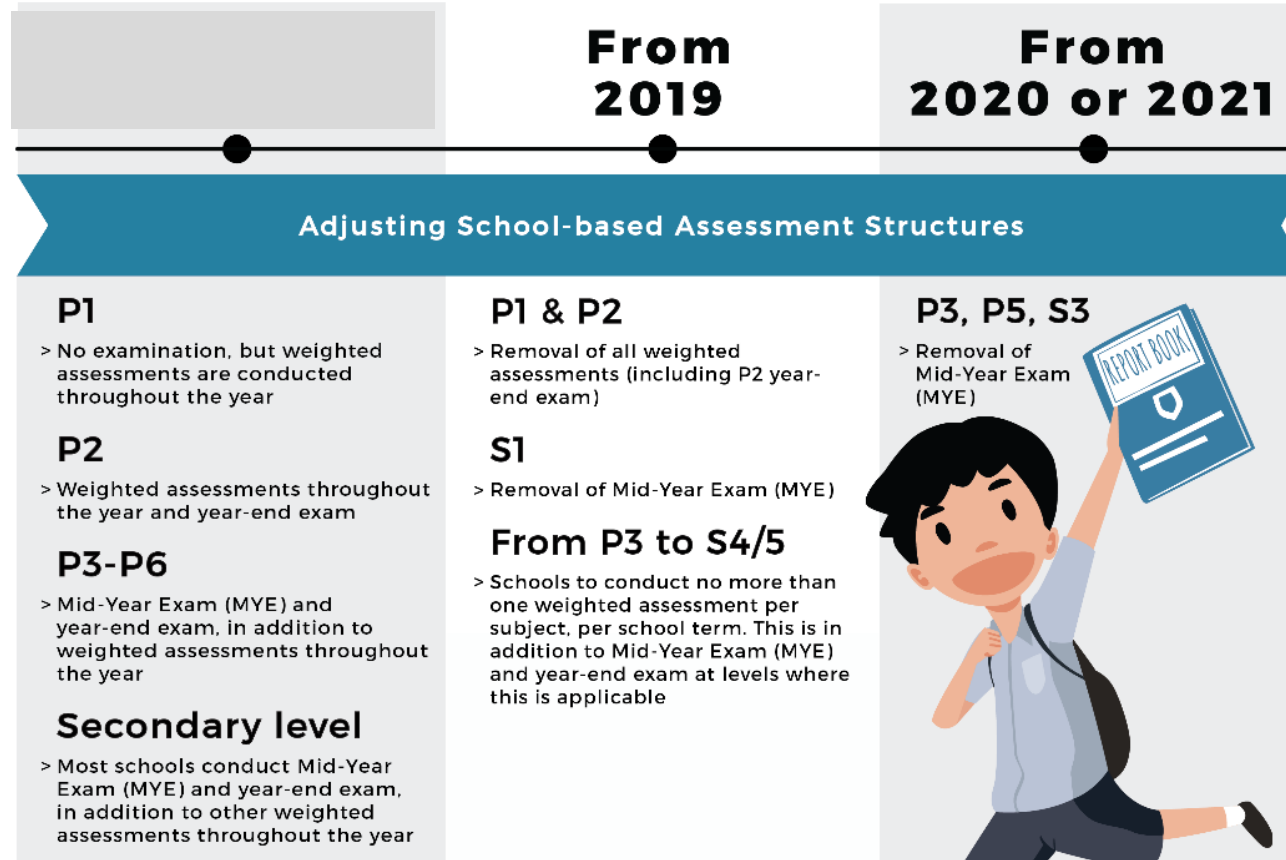
1. Science is formally learnt from P3 onwards.
2. Literacy and numeracy are the focuses for P1/P2.
3. At P1/P2, there are Learning Support Programmes for English Language and Mathematics.

P1/P2 Subject Learning

- (Academic) English Language
- (Academic) Mother Tongue Language
- (Academic) Mathematics
- (Non-Academic) Physical and Health Education
- (Non-Academic) Art
- (Non-Academic) Music
- (Non-Academic) Social Studies
- (Non-Academic) Character and Citizenship Education (in MTL)

Note: Science from P3 onwards

The Education Landscape



| Learn for Life | Joy of Learning | Holistic Development |

No Weighted Assessment at P1/P2

No Weighted Assessments at P1/P2

- Ensuring a smoother transition from K2 to P1
- Reducing anxiety and stress
- Enhancing the joy of learning
- Nurturing greater intrinsic motivation to learn
- Focusing on building a strong foundation of skills and values
- Providing information on learning progress
- Providing richer feedback on and a complete picture of the child's development

P1/P2 Learning Outcomes

- English Language
- Mathematics
- Mother Tongue Language
- Physical Education
- Art
- Music
- Social Studies



Example of Academic Learning Outcomes

Subject	Primary 1	Primary 2
Mathematics	<ol style="list-style-type: none">1) Understand numbers up to hundred.2) Understand addition and subtraction.3) Add and subtract numbers.4) Understand multiplication and division.5) Identify, name, describe and sort shapes.6) Tell time to the hour/half hour.7) Measure and compare lengths using everyday objects.8) Read and interpret picture graphs.	<ol style="list-style-type: none">1) Understand numbers up to thousand.2) Solve mathematical problems involving addition and subtraction.3) Multiply and divide numbers within multiplication tables.4) Identify, name, describe and sort shapes and objects.5) Tell time to 5 minutes.6) Compare and order objects by length, mass or volume.7) Read and interpret picture graphs with scales.8) Understand fractions.

Example of Non-Academic Learning Outcomes

Subject	Primary 1	Primary 2
Art	<ol style="list-style-type: none">1) Identify simple visual qualities in what they see around them.2) Ask questions about what they see.3) Draw from their imagination and observation.4) Play with a variety of materials and tools to make art.5) Share their imagination, thoughts and feelings through artmaking.6) Show interest in looking at a variety of artworks.7) Talk about what they see, feel and experience using basic art vocabulary of elements and principles of design such as lines, shapes, colours, patterns and proportion.	Same Learning Outcomes as P1

Learning Dispositions

No.	SPARKLE Value	Actions/Behaviours
1	Perseverance <ul style="list-style-type: none">• Resilience and grit	<ul style="list-style-type: none">• The student works independently.• The student works towards learning goals in a determined and disciplined manner.
2	Adaptability <ul style="list-style-type: none">• Open-mindedness	<ul style="list-style-type: none">• The student is open to learning in a new situation.• The student acts on feedback and uses it to improve performance.
3	Responsibility	<ul style="list-style-type: none">• The student attends school regularly.• The student is punctual for school and class.• The student completes homework assignments.• The student takes care of school property.• The student adheres to school rules and routines.
4	Kindness	<ul style="list-style-type: none">• The student is well-mannered and gracious.• The student cooperates well with others in a group learning setting.• The student respects ideas shared by peers.• The student renders help to others in need.
5	Enthusiasm <ul style="list-style-type: none">• Joy of learning• Curiosity	<ul style="list-style-type: none">• The student participates actively in lessons across subjects.• The student listens attentively and actively.• The student asks questions relevant to the area of learning.• The student seeks clarification when in doubt.



Designing the P1 Curriculum Experience

for a smoother transition from K2 to P1

by

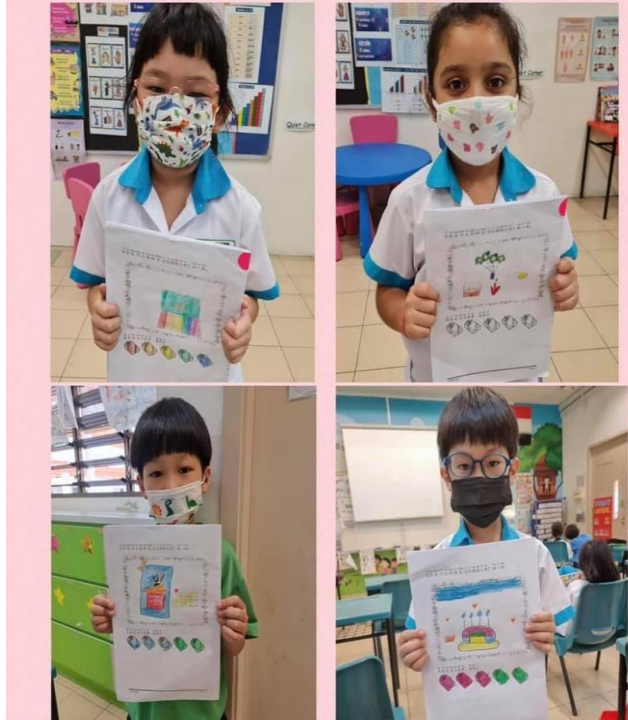
avoiding or delaying early schoolification

so as to

reduce anxiety and stress

build a strong foundation of skills & values

promote the joy of learning



Riverside Curriculum Practices at P1

- No pen-and-paper spelling test in Term 1
- Promoting the reading habit
- Minimising homework load and encouraging reading after school
- Urging parents to READ TO the child and READ WITH the child
- No academic support lessons in the afternoons

Riverside Curriculum Practices at P1

- Experiential, hands-on activities
- Class discussions and sharing of views
- Rich tasks which do not have the one right answer
- Extension activities (e.g. after a Learning Journey) to deepen learning
- Learning with technology
- Informal ways to track learning and progress
- Self-assessment and peer-assessment opportunities

Supporting Our P1 Learners

- Learning Support Programme (English)
- Learning Support Programme (Mathematics)



P1 Signature Programmes



- Form Teacher Guidance Period (FTGP)
- Programme for Active Learning (PAL)
- Applied Learning Programme “PlayWorks” – P1 LegoWorks
- Learning Fiesta (Learning Journeys and P1 MTL Cultural Camp)
- Values in Action (VIA) –Project EARTH; Keep Singapore Clean Movement in Schools
- Programme for Active Learning (PAL)
- Student Leadership Development
- The House System – HouseWarming; Riverside Sports and Games Day
- National Education (NE) – 4 Commemorative Events



Learning Journey to the Zoo



Learning Journey to Jacob Ballas Children's Garden



Wild Africa Goes To School

- Simba the lion cub (our main character) needs help searching for his mommy.
- Through the eyes of Simba, participants will meet 3 other Wild Africa friends (rhinoceros, giraffe, cheetah) and search for his mommy.
- Participants to help Simba decide if the animals he encounters are his mommy and learns more about these 3 friends' unique coats.



P1 (EL) Bringing the Zoo & Picnic to the School



P1 Mother Tongue Language (MTL) Cultural Camp



ALP PlayWorks - P1 LegoWorks Module



Music & Movement and CultureWorks



P1 Programme for Active Learning (PAL)



Creative
Drama



P2 Programme for Active Learning (PAL)

Inspiring Riverians

The Story of The Amazing Star



Inducting Riverians

A Comprehensive Induction Programme

Activity-Based Induction

Getting to Know My School

Getting to Know My Teachers

Getting to Know My Classmates

Developing My Lifeskills

Starting Strong

Supporting Riverians

Developing Curiosity, Cooperation, Communication

No Weighted Assessments

No Pen-and-Paper Spelling in Term I

Active and Experiential Learning

Cultivating the Reading Habit

(Engaging Parents to Read To & Read With the Child)

Mimimising the Homework Load

No Remedial Lessons in Semester One

Celebrating Riverians

SPARKLE Certificate

Monthly Model Class Award

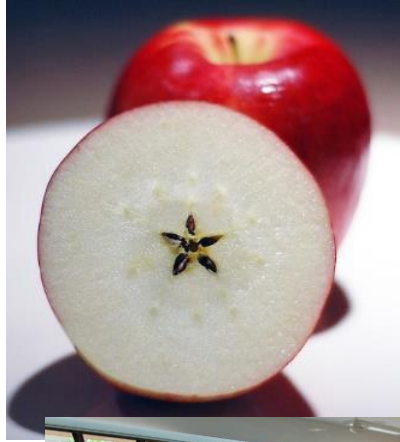
Termly Star of Riverside Award

Star Learner Award

Gem Progress Award

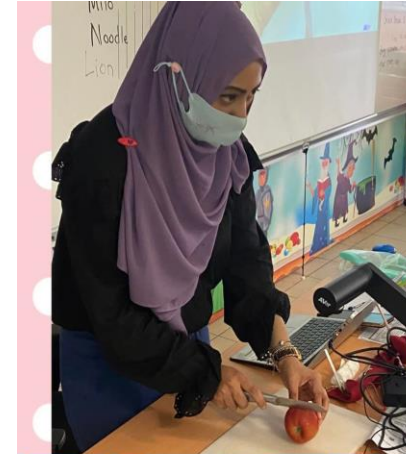
Character Award





Inspiring Riverians

The Story of The Amazing Star



Inducting Riverians

A Comprehensive Induction Programme in the Opening Weeks

Activity-Based Induction

Getting to Know My School

Getting to Know My Teachers

Getting to Know My Classmates

Developing My Lifeskills

Getting to Know My Teachers & My Classmates!



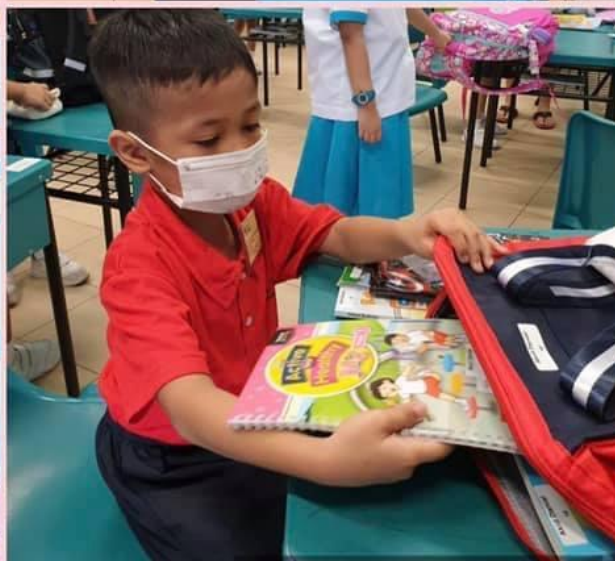
Inducting Riverians

Getting to Know My School



Inducting Riverians

Developing My Lifeskills



Supporting Riverians

Developing Curiosity, Cooperation & Communication



Celebrating Riverians



SPARKLE Certificate
Monthly Model Class Award
Termly Star of Riverside Award
Class Awards:
Star Learner Award
Gem Progress Award



The Opening Days





The Opening Days

P1 Name Badge

- Your child has been given the clip-on name badge today.
- Please ensure your child puts on the name badge for the first 2 weeks i.e. Term 1 Weeks 1 & 2.
- On the badge, circle the dismissal arrangement.



Name: Name

Class: Class

House: House

**Dismissal: Gate 1 / Gate 4 / MK Gate / Raffles SCC /
School Bus ____ / External School Bus or SCC**

School Uniform and PE Attire



Students are to wear the prescribed school uniform and modification to the school uniform is not allowed.

School Uniform and PE Attire



ABOUT PE ATTIRE

- To be worn for PE lessons and selected PAL modules.
- P1 students are allowed to be in their PE attire for the entire day with PE/PAL lessons.
- Colour of PE T-Shirt = House Colour

IRON-ON NAME-TAGS

- Please iron on the name tags on the school uniform and PE shirt when you receive them in Feb.
- Colour of the Name Tag is Orange for 2024 P1 Students.

School Uniform and PE Attire



White Shoes and White Socks

School Rule: Students should wear low-cut white canvas shoes and plain white socks. Socks should be visibly seen above the ankles. Ankle socks are not allowed.

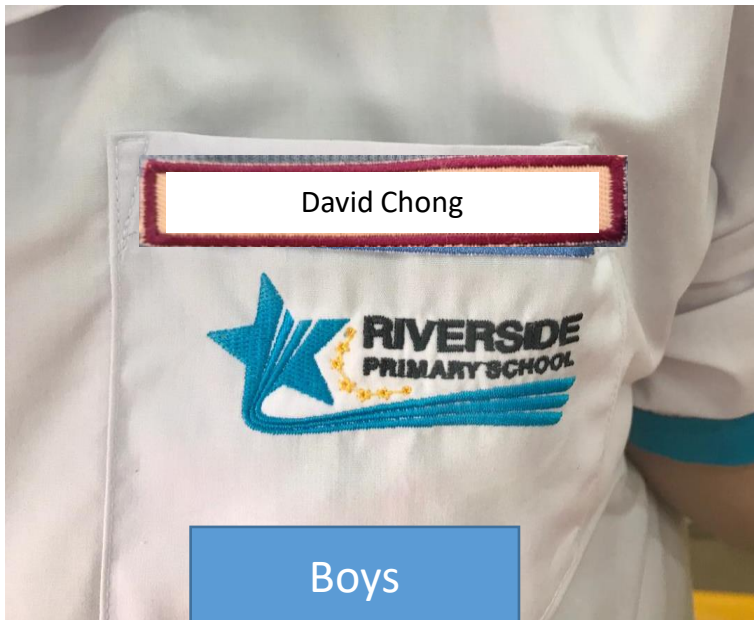
In addition, it is preferred that the shoes are entirely white in colour and do not prominently display any brand logo.

School Uniform and PE Attire



IRON-ON NAME-TAGS

Name-Tags are to be on the edge of the pocket of the shirt for boys; and above the school crest on the blouse for girls and the PE attire.





The Opening Days

P1 Student Arrival

- Remember your child's Class Name. It is shown on the name badge.
- Parents can bring your child to the school foyer on the first day (Tue, 2 Jan 2024).
 - Hand your child over to the staff-ushers at the foyer.
 - Your child will be directed to the Form Classroom.
 - Do not move beyond the foyer.
- If you are walking your child to school, please enter via Gate 1 or Gate 4. MK gate will not be opened on 2 Jan 2024 for arrival.
- If driving, parents are to park their vehicles in the carparks in the neighbouring estate after letting your child alight at the school foyer.



The Opening Days

SPECIAL AND EXTENDED RECESS ON FIRST DAY

- P1 recess on Tue, 2 Jan 2024 will be staggered to decongest the crowd.
- Parents can come in 10mins before your child's recess and are requested to leave once the recess ends. (Parents of P1 Strength can remain in school after sending your children in the morning to await the recess at 8.30am.)
- The staggered P1 recesses on Tue, 2 Jan 2024 are in the next slide.
- The usual P1 recess is from 9.00am to 9.30am. However, during the P1 Induction Week (Wed, 3 Jan 2024 to Fri, 5 Jan 2024), the P1 will have their recess from 8.45am to 9.30am so that they have more time to get ready for recess and to eat.



The Opening Days

SPECIAL AND EXTENDED RECESS ON FIRST DAY

Class	Recess Timing on 2 Jan 2024	Snack Break on 2 Jan 2024	Remarks
P1 Strength	8.30am to 9.00am	10min in class between 11.30am to 11.45am	Parents of P1 Strength can remain in school after sending your children in the morning to await the recess at 8.30am.
P1 Perseverance	9.00am to 9.30am		Parents can be in school by 8.50am for recess.
P1 Adaptability	9.30am to 10.00am		Parents can be in school by 9.20am for recess.
P1 Responsibility	10.00am to 10.30am	10min in class between 8.15am to 8.30am	Parents can be in school by 9.50am for recess.
P1 Kindness	10.30am to 11.00am		Parents can be in school by 10.20am for recess.
P1 Leadership	11.00am to 11.30am		Parents can be in school by 10.50am for recess.
P1 Enthusiasm	11.30am to 12.00pm		Parents can be in school by 11.20am for recess.



The Opening Days

Dismissal Procedure

Students will be grouped according to:

- Those taking the school bus [Dismissal at FOYER]
- Those to be picked up at Gate 1 [Dismissal at GATE 1]
- Those to be picked up at Gate 4 [Dismissal at GATE 4]
- Those to be picked up at MK Gate [Dismissal at MK Gate]
- Those staying on at School-Based Student Care Centre

Notes

- Brief your child about the dismissal procedure and who will be picking him/her up.
- Coloured dot stickers will be placed on the name badge for Commit Learning SCC (CLS SCC) and School Bus.



The Opening Days

School Bags and Packing of Items

- Refer to the checklist “**P1 Items to Bring on Opening Days**” given and pack for the first four school days accordingly.
- Items will be collected and kept in the Form Classroom. (This will contribute towards a lighter and more manageable school bag for the child.)
- All items/stationery MUST be labelled with the child’s name and class.
- Trolley bags are allowed but not encouraged.



The Opening Days

Call to Parents! – Supporting Your Child from the Start

- Check the Student Handbook for notes from the teacher or for information on homework assignments.
- Check Parents' Gateway for notifications.
- Check the school's Facebook page for posts on events and reminders.
- Check the school's website for letters and announcements.
- Email to the school at riverside_ps@moe.edu.sg if you have any query.



**We welcome you and your child
to be part of the Riverside Story!**





P1 Orientation for 2024 P1 Cohort
Friday, 17 Nov 2023

SCHOOL SYSTEMS & ADMINISTRATIVE MATTERS

OUTLINE

1. SAFETY AND SECURITY MATTERS

- Arrival and Dismissal
- Road Safety
- Visitor Management
- Early Dismissal Arrangement

2. HEALTH AND WELLNESS MATTERS

- Students who fall ill during curriculum time
- Students with Medical Conditions
- School-Based Health Screening and Immunisation Exercise
- Healthy Culture in Riverside Primary

3. SCHOOL SERVICE PROVIDERS

- School Bus Vendor
- School Bookshop
- School Uniform Vendor
- Student Care Centre
- School Dental Services

4. ADMINISTRATIVE MATTERS

- Submission of Forms
- MOE Financial Assistance Scheme (FAS)
- Payment of School Fees
- Communication Platforms – Parents Gateway
- Consent on Photography/Videography



SAFETY AND SECURITY MATTERS

- a) Arrival and Dismissal
- b) Road Safety
- c) Visitor Management
- d) Early Dismissal Arrangement

SAFETY AND SECURITY

Morning Arrival

- **Vehicle Drop-Off**

- ☐ (7.00 to 7.35am) Drive into the school premises from Gate 2 (guard post); drop off your child at the school driveway; and drive out from Gate 3. Students are to get ready before reaching the school driveway and alight quickly. Parents do not alight from the car.
- ☐ (After 7.35am) Drop off your child at Gate 1 (guard post) and allow your child to walk in independently.

- **Pedestrian Drop-Off**

- ☐ (7.00 to 7.35am) See off your child at either Gate 1 (guard post), Gate 4 (outside canteen) or MKGate. Do not enter the school compound.
- ☐ (After 7.35am) See off your child at Gate 1 (guard post).

SAFETY AND SECURITY

Dismissal Arrangements

- ❑ Dismissal Points: School Bus, School-Based Student Care Centre (SCC), Gate 1, Gate 4, MK Gate, External School Bus and External SCC
- ❑ School Bus/External School Bus – Gather at Foyer for attendance-taking before boarding the bus
- ❑ Gate 1, Gate 4 & MK Gate – Will be led by Teachers/Staff to the gates for Pick-up by Parent or Authorised Adult (Parents are to wait for your child at the respective Gates)
- ❑ School-Based SCC – Form Teachers will hand over to SCC Teachers at the Foyer
- ❑ External SCC – Gather at foyer and pick up by External SCC staff

SAFETY AND SECURITY

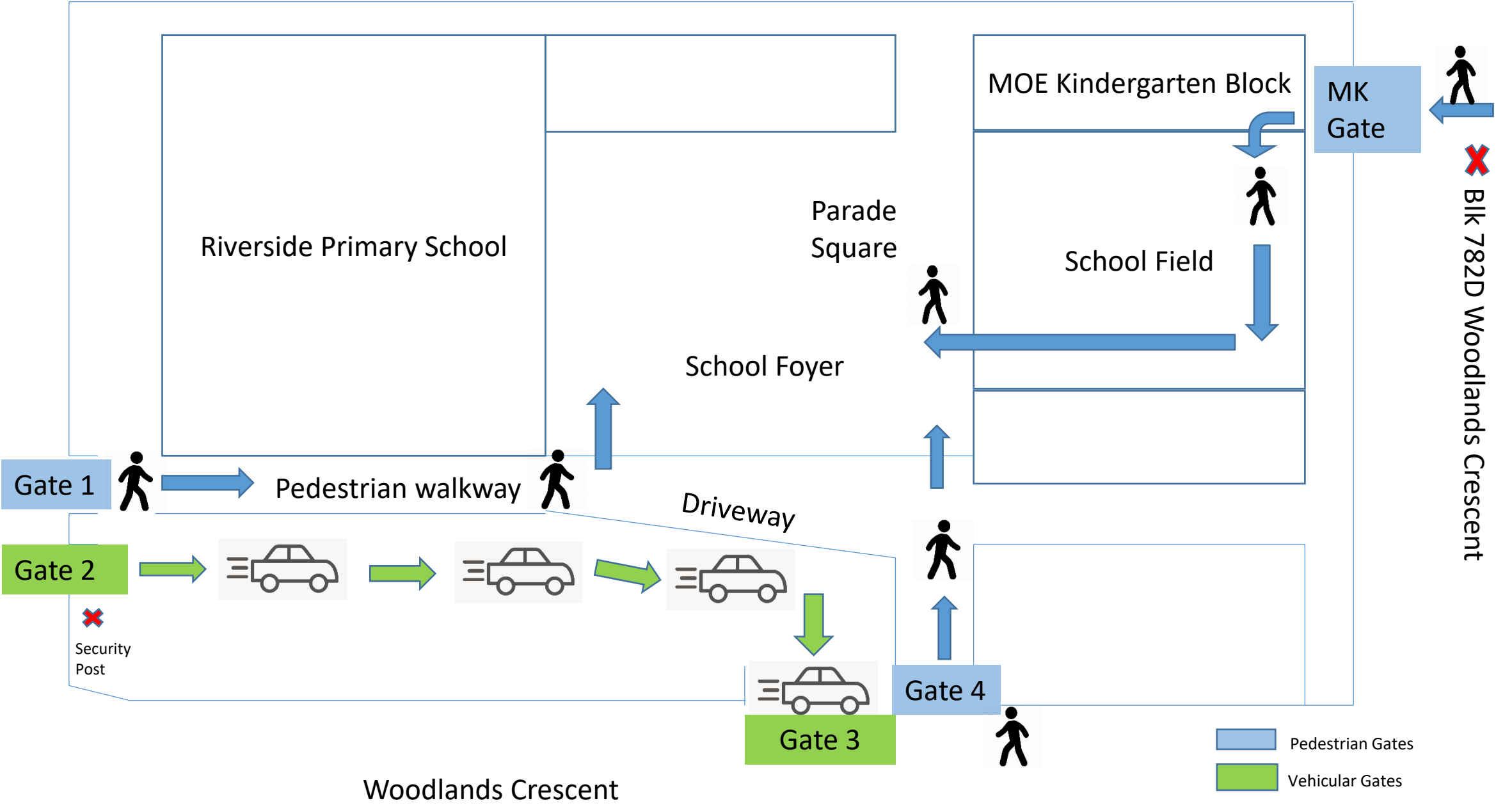
Road Safety

- ☐ If you are driving to pick your child during dismissal, please park your car at the nearby carpark and walk to the school gate to wait for your child.
- ☐ For the safety of the students and other road users, do not wait along the road outside school.
- ☐ The road outside the school is one-lane both ways and parking your car along the road will cause obstruction and pose danger to other road users.

LOCATION MAP OF SCHOOL GATES (RIVERSIDE PRIMARY SCHOOL)

Blk 786D Woodlands Drive 60

Woodlands Crescent



SAFETY AND SECURITY

Opening Hours of School Gates

Gate	Open for Arrival	Closed	Open for Dismissal	Closed	Open for Late Afternoon Dismissal
Gate 1 (pedestrian gate near security post)	6.30am to 7.50am	7.50am to 1.15pm	1.15pm to 2.00pm	2.00pm to 3.45pm	3.45pm to 6.00pm
Gate 4 (pedestrian gate near school canteen)	6.30am to 7.50am	7.50am to 1.15pm	1.15pm to 2.00pm	2.00pm to 3.45pm	3.45pm to 6.00pm
MK Gate (pedestrian)	7.00am to 7.35am	7.35am to 1.30pm	1.15pm to 2.00pm	2.00pm to 3.45pm	3.45pm to 4.30pm
Gate 2 (vehicular entrance)	6.30am to 7.35am	Closed from 7.35am	Closed from 7.35am	Closed from 7.35am	Closed from 7.35am
Gate 3 (vehicular exit)	6.30am to 7.35am	Closed from 7.35am	Closed from 7.35am	Closed from 7.35am	Closed from 7.35am

SAFETY AND SECURITY

Visitor Management

- ❑ NO ENTRY During School Hours (unless parents have appointment with teachers or pick up sick child)
- ❑ Parents with appointment or picking up sick child are required to:
 - ❖ Register at the guard post
 - ❖ Obtain a pass to enter the school
 - ❖ Display your pass at all times
 - ❖ Approach the General Office for assistance
 - ❖ DO NOT move into the classrooms or student activity areas
 - ❖ Sign out and return the pass when leaving.

SAFETY AND SECURITY

Leaving School Earlier than Dismissal Time

Parents are to:

- ☐ Inform the Form Teacher or General Office (GO) in advance if it is planned (eg medical appointment, piano exam etc);
- ☐ Call the GO if it is a last minute arrangement stating reason for early dismissal;
- ☐ Register at the guard post and report to the GO;
- ☐ Wait in the GO for the child to be brought down;
- ☐ Fill up Early Dismissal Form and sign the child out to leave school earlier; and
- ☐ Pass the Early Dismissal form to the security guard before leaving school.

HEALTH AND WELLNESS MATTERS

- a) Students who fall ill during curriculum time
- b) Students with special medical conditions
- c) School-Based Health Screening and Immunisation Exercise
- d) Healthy Culture in Riverside Primary

Health and Wellness of Students

When a child is ill



A child who is ill with fever, the flu or an infectious illness should see a doctor, rest at home for the full duration indicated in the Medical Certificate, and recover fully before returning to school.

Health and Wellness of Students

When a child is ill



If the child falls ill in school, the Form Teacher or the General Office will contact the parents.

A parent or an authorised adult is expected to come to school and bring the child home.

Remember to always keep the Form Teacher or the General Office updated on any change in contact information!

Health and Wellness of Students

Children with Medical Conditions or Needing Special Care

- ☐ Share the information with the school and work out a management plan together.
- ☐ Obtain a report or letter from the doctor and submit a copy to the Form Teacher.
- ☐ Ensure that your child brings the prescribed medication for the specific medical condition to school every school day.
- ☐ Ensure that the medication is clearly labelled with your child's name and class.
- ☐ Ensure that your child knows how to take the medication or use it on himself/herself.
- ☐ The school and teachers are NOT to administer medication to your child. The school staff can help to supervise your child while he/she is taking or using the prescribed medication
- ☐ Make an appointment for a meeting with the Form Teacher in early-January.

School-Based Health Screening and Immunisation Exercise

- Confirmed dates will be made known at a later juncture.
- Consent forms will be issued before the exercise.
- Get ready the child's Health Booklet with the Immunisation Records. If these cannot be found, please visit the Polyclinic to purchase a new Health Booklet and get a copy of the immunisation records.





The Riverside Way

No Drinks Stall in School Canteen

Raising Healthy Children Together

No-Frills Birthday Celebrations

No cakes or tidbits. No goody bags.

Cultivation of culture of simplicity and appreciation

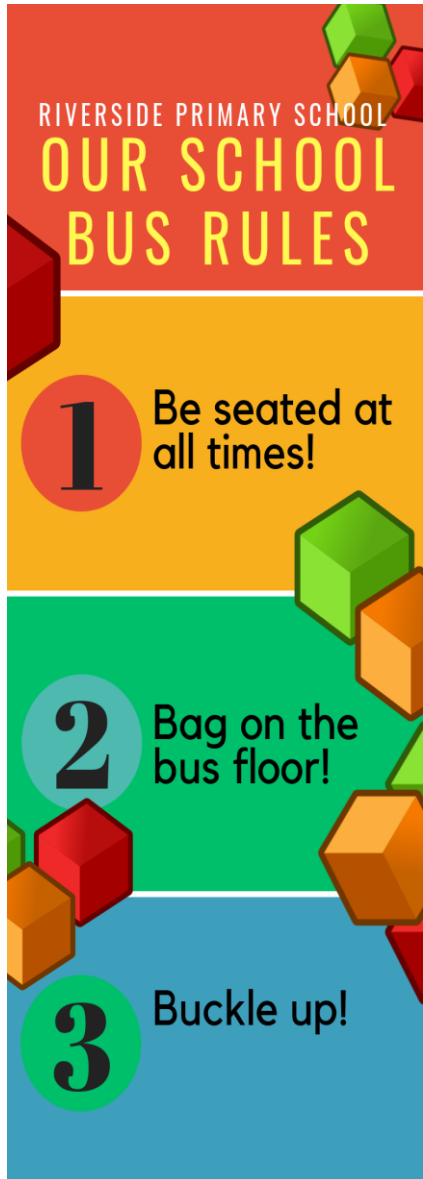
Promotion of healthy lifestyle

Safeguarding of children's safety (e.g. food allergies)

SCHOOL SERVICE PROVIDERS

- a) School Bus Vendor
- b) School Bookshop
- c) School Uniform Vendor
- d) Student Care Centre
- e) School Dental Services

School Bus Service



- ☐ School Bus vendor: Chang Chen Pte Ltd. Contact no: 67604835/90905835
- ☐ Bus arrival in school is before 7.20am.
- ☐ Pick-up time depends on distance and route.
- ☐ Pick-up time will always be earlier in the starting weeks; and will stabilise after 2 to 3 weeks.
- ☐ We seek parents' patience and understanding.
- ☐ Bus vendor will inform parents on the bus fee, vehicle number, pick-up and drop-off time in the last week of Dec.
- ☐ Teachers will conduct briefing on school bus safety and discipline.



SCHOOL BOOKSHOP/UNIFORM VENDOR

School Bookshop

- School Bookshop Vendor is Pacific Bookstore
- Opening Hours: 8.30am–3pm

School Uniform Vendor

- School Uniform Vendor: Finest Fashion Centre
- Shop: Beauty World Centre, 144 Upper Bukit Timah Rd, B1-03, Singapore 588177
- In School: Purchase uniform at the bookshop – 8.30am to 3pm (Mon – Fri)

School-Based Student Care Centre (SCC)

- Appointed Vendor: Commit Learning School House (CLS)
- Indication of Interest: 18 September 2023 – 26 September 2023
- E-Registration: 23 October 2023 – 13 Nov 2023
- Parents who wish to attend briefing by CLS, please stay back after this briefing.

School Dental Service



- ☐ Dental Therapist: Ms Lin Liang Chen
- ☐ Toothbrushing Programme for P1 students
- ☐ Dental Check-up for P1 students
- ☐ A consent form for your child to receive dental service will be sent to you via Parents Gateway in Dec 2023. Please give your consent by the given deadline in the consent form.

School Canteen

- ☐ 5 Food Stalls (with at least 2 stalls serving halal food)
- ☐ 1 Food stall has vegetarian food option
- ☐ HPB's Healthy Meals in School Programme (HMSP)
- ☐ No Drinks Stall in the School Canteen
- ☐ Many Water Coolers
- ☐ Every child is to bring his/her water bottle to school every day.

Pocket Money for Recess

- ☐ Please refer to the menu for each stall on school website.
- ☐ A set meal cost \$1.50 to \$2.00 depending on the portion.
- ☐ A set meal includes rice/noodles/bread, vegetables, fruit and meat or others



ADMINISTRATIVE & OTHER MATTERS

- a) Submission of Forms
- b) MOE Financial Assistance Scheme (FAS)
- c) Payment of School Fees
- d) Communication Platforms – Parents Gateway
- e) Consent on Photography/Videography

SUBMISSION OF FORMS

In our P1 Orientation Letter emailed to you on 27 Oct 2023, parents have been advised to submit the following forms:

Compulsory Forms to Submit:

1. MOE Pupil Data Form – submit online from 27 Nov to 29 Dec 2023
2. GIRO Form – Submit online. However, if you are unable to do so, please submit hardcopy today
3. Riverside Primary School Student Information Form – online by 6 Nov
4. Edusave Standing Order Form – Submit online
5. Travel Declaration – submit via Parents Gateway

Optional Forms (If applicable)

1. MOE Financial Assistance Scheme (FAS) – submit online
2. Mother Tongue Language (MTL) Form – if you are selecting a MTL that differs from the child's race
3. School Bus Form
4. Student Care Fee Assistance (SCFA) Application Form (For SCC students)

MOE Financial Assistance Scheme (FAS)

- ☐ All applications for MOE's Financial Assistance Scheme are to be submitted online
- ☐ Applicants are reminded NOT to purchase books and uniforms until the application outcome is known. Items purchased prior to approval outcome of the application will not be reimbursed.
- ☐ Parents who have submitted the application by 10 Nov 2023 should receive the outcome by end of first week of Dec 2023.
- ☐ To make an enquiry, please call General Office at 63654490.

Payment of School Fees

Payment of fees by **GIRO** is strongly encouraged!

GIRO deduction is on the 26th of every month from February to December.

Parents Gateway

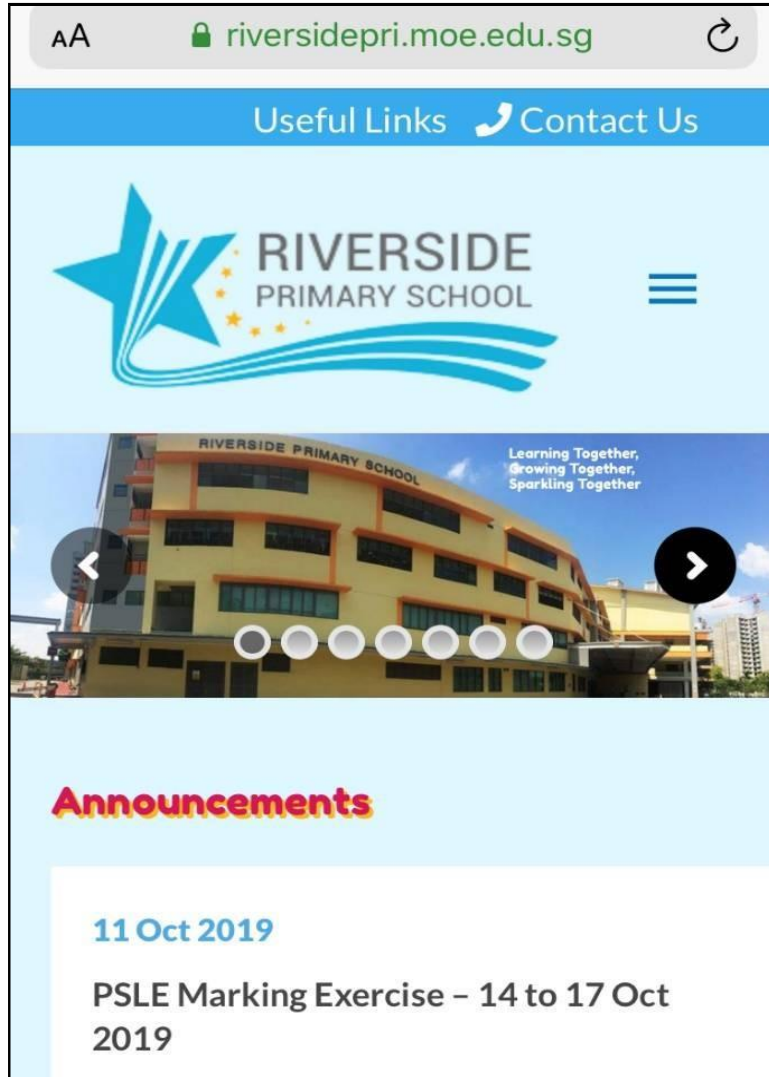
- The Parents Gateway is a mobile app developed by MOE and GovTech for parents.
- It will be used by MOE and school to disseminate MOE-wide and school-wide initiatives, announcement, programmes and activities.
- It also allows parents to declare your child's travel plans and parents to give consent for your child to participate in school's programmes and activities.
- We strongly encourage you to download "Parents Gateway" on your mobile phone (available on iOS and Android platforms only)
- You will be required to use your SingPass 2-Step verification (2FA) to access Parents Gateway.



Consent on Photography/Videography

- We take photographs or video images of students and parents during school activities and events such as classroom lessons, CCAs, school camps and school concerts.
- The school may use and publish such photographs and/or video recordings in school publications, website, social media channels, and other communication channels.
- Please notify the school if you do not want to be featured in any of the school photographs or videos.

Staying Connected



(General Office Phone Number)
6365 4490

(Email)
riverside_ps@moe.edu.sg

(Website)
www.riversidepri.moe.edu.sg

(Facebook Page)
<http://facebook.com/Riversideprimaryschoolsingapore>





Thank You!