

Title: A New School of Thought: Full SBB | What does it mean for me?

<https://go.gov.sg/ansot-fullsbbsummary>



To Serve To Lead



Primary 6 Curriculum Briefing

- The programme today for parents will be as follows:

TIME	PROGRAMME	VENUE
3 p.m. – 4 p.m.	Principal's Welcome Address Curriculum Sharing by YH	Level 3 School Hall
4.10 p.m. - 5 p.m.	Form Teacher Interaction	P6 Classrooms (Level 6)



To Serve To Lead



Punggol Cove Primary School

Primary 6
Curriculum Briefing 2024



To Serve To Lead



Outline of Briefing

1. Principal's Address:
2. Introduction of PCPS Key Personnel
3. Introduction of P6 Form Teachers
4. Curriculum in Primary 6
5. Assessment Matter
6. PSLE Matters
7. Direct School Admission Matters
8. Breakout/ Concurrent Sessions





Welcome, Parents!

*P6 Curriculum Briefing
(PSLE and Sec 1 posting)*

cum

Parent-Teacher-Connect session!

19 Jan 2024



To Serve To Lead



Your Child at P6



CHOICES

SUPPORTING YOUR CHILD DURING THIS PRE-PSLE PERIOD ...

Managing your
child's and your
own
expectations


What are your
child's aspirations
and goals?

PSLE Score
Target AL scores
in EL, Ma, Sc and
MTL

Posting Groups
PG1, PG2 and PG3
Taking subjects at
MDL or LDL



Secondary School
Choices :
Choice Matters!

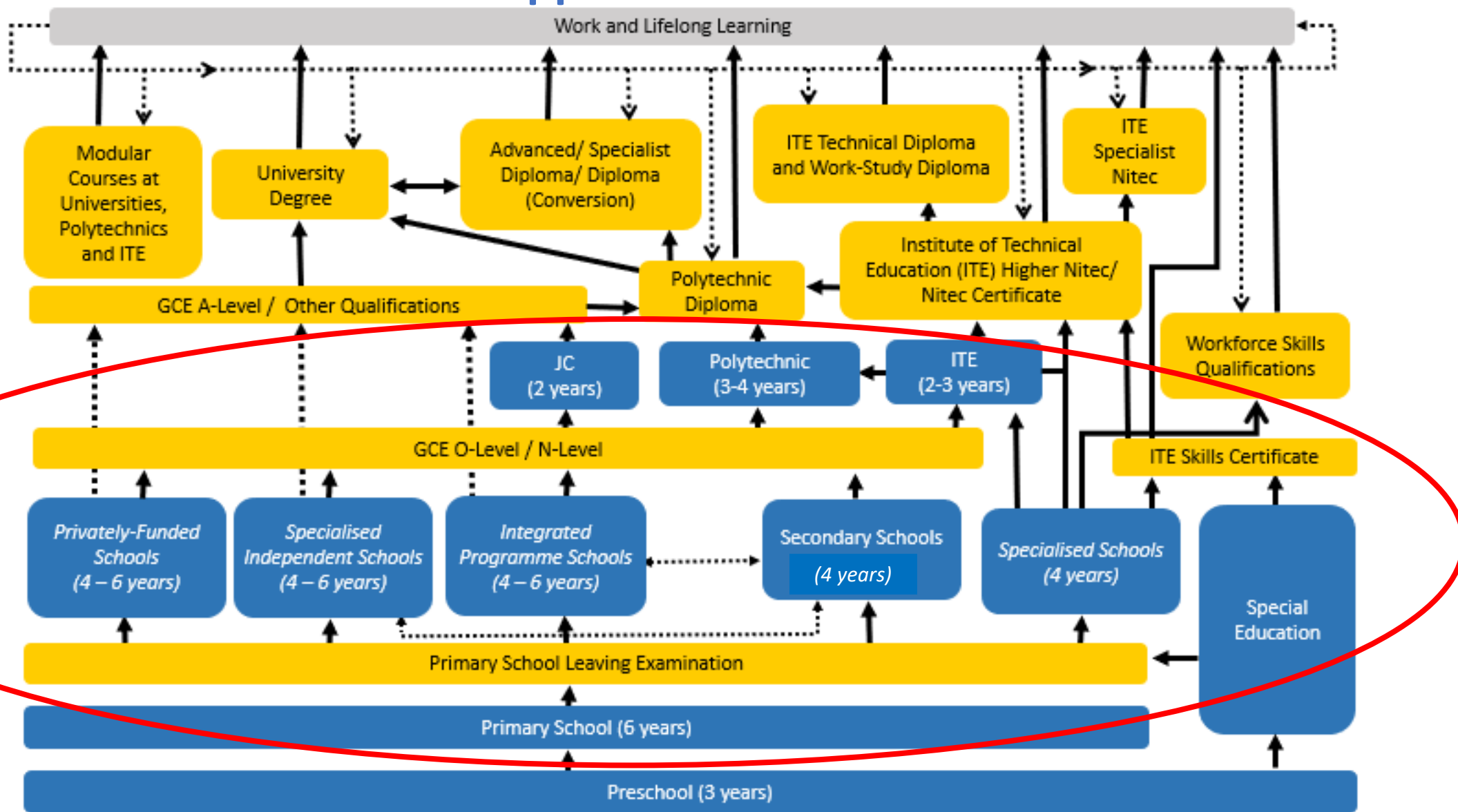


More Diverse and Flexible Pathways and Opportunities

“We want to inspire our students to define success not just by academic and material achievements, but by one’s contributions”

Education Minister Chan Chun Sing, WPS 2022

Educational Pathways Today with More Diverse Pathways and Opportunities



Remaking Secondary School Pathways

Express, N(A) and N(T) courses will be phased out in Secondary Schools by 2024.



N(T)

N(T)-Level

ITE

Secondary School students take most subjects at the level offered by their courses.

After Full SBB Implementation



PSLE

Students will continue to be posted to Secondary schools across three scoring bands.

One Secondary School Education, Many Subject Bands
At the start of Sec 1, students can take a combination of G1/2/3 subjects based on their PSLE scores.

Sec 4 in 2027

One Common Certificate

In 2028, MOE will implement a new post-Secondary admissions system.

JC, Poly and ITE in 2028



Understanding Full Subject-Based Banding (Full SBB) [from 2024]



What is Full SBB?

WHAT IS FULL SBB?

- Full SBB will be implemented in secondary schools from 2024, and aims for students to:



Have greater ownership of their learning according to their strengths, interests, abilities, talents and learning needs.



Develop a growth mindset and an intrinsic motivation to learn for life.



Have more opportunities to interact with friends of different strengths, interests, abilities and talents.



Have more options for post-sec pathways, while ensuring they have strong fundamentals and can thrive in their chosen pathway.

FULL SUBJECT-BASED BANDING (FULL SBB)

Secondary school experience under Full SBB

- **Mixed form classes** and **common curriculum subjects** at **Lower Secondary**.
- **Subjects to be offered at G1, G2 or G3**, mapped from the standards of the N(T), N(A) and Express subject levels respectively.
- **Greater flexibility** to customise students' learning by offering subjects at various subject levels.
- **Shift away from stream-based subject offerings.**

After PSLE

Start of Sec

End of Sec

Post Sec

From 2023:
Entry to S1
through 1 of 3
Posting Groups

From 2027:
Singapore-Cambridge
Secondary Education
Certificate (SEC)
examination

Updated post-
secondary admission
criteria



To Serve To Lead



FULL SBB: S1 POSTING

Three Posting Groups to ensure schools are accessible to diverse learners

From the 2024 S1 cohort, MOE will facilitate the admission of P6 students into S1 through 3 Posting Groups: **Posting Group 1, 2 and 3.**

Objective: Ensures that schools continue to admit a **diverse profile of students** and students have **access to a wide range of schools.**

Posting Groups will only be used for the purposes of facilitating entry into secondary school and to guide the subject levels students offer at the start of S1.

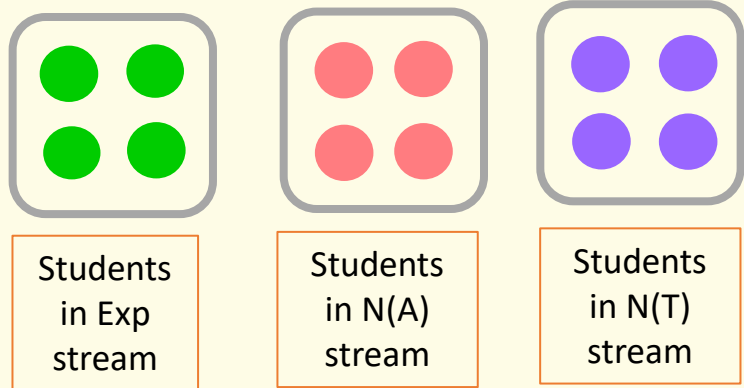
PSLE Scores provide a good gauge of the subject levels that students can offer at the beginning of S1.



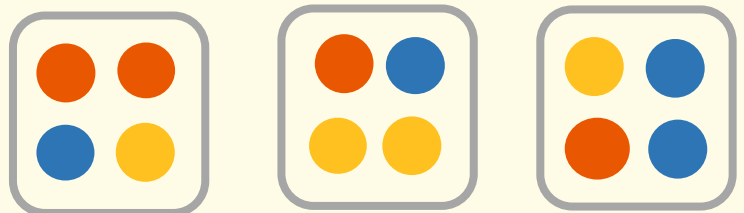
Academic Stream (2023 and before)	PSLE Score	Posting Group	Subject level for most subjects
EXPRESS	4 – 20	PG3	G3
EXPRESS / N(A) OPTION	21 and 22	PG2 or PG3	G2 or G3
N(A)	23 and 24	PG2	G2
N(A) / N(T) option	25	PG1 or PG2	G1 or G2
N(T)	26 – 30 (with AL 7 or better in EL and MA)	PG1	G1

FULL SBB: MIXED FORM CLASSES IN LOWER SECONDARY

Form classes arranged by academic stream in schools yet to implement Full SBB



With Full SBB:
Mixed form classes



- Under Full SBB, students will be placed in mixed form classes in Lower Secondary to ensure a **mix of learner profiles**.
 - Provides students with **more opportunities** to interact with other students of different strengths and interests.
 - Enables students to **build meaningful friendships and learn to value different perspectives**.



Students posted through **PG3**



Students posted through **PG2**



Students posted through **PG1**

FULL SBB: COMMON CURRICULUM

Common Curriculum Subjects taken in mixed form classes (~1/3 curriculum time)

Examinable Subjects:

- Art
- Design & Technology (D&T)
- Food & Consumer Education (FCE)

Non-examinable Subjects:

- Character & Citizenship Education (CCE)
- Music
- Physical Education (PE)

- The six common curriculum subjects would each have a single syllabus for all students at Lower Secondary levels.
 - These subjects will be taught and assessed at a common level that is accessible to all students.
 - Teachers will adopt a range of approaches to cater to the different learning needs of their students.
- For other subjects, students attend classes with others taking the subject at the same subject level.

OFFERING SUBJECTS AT A MORE DEMANDING LEVEL(MDL) AT THE START OF SEC 1

- Students posted to schools through PG1 and PG2 can offer **English Language, Mother Tongue Languages, Mathematics and Science** at a more demanding level based on their PSLE AL for each subject.

FOR STUDENTS POSTED TO SCHOOLS THROUGH PG1 AND PG2			
SUBJECT	PSLE SUBJECT LEVEL	PSLE AL FOR SPECIFIC SUBJECT	OPTION TO TAKE THE S1 SUBJECT AT :
• English Language • Mother Tongue Language • Mathematics • Science	Standard	AL 5 or better	G3 or G2
		AL 6	G2
	Foundation	AL A	G2

OFFERING SUBJECTS AT A LESS DEMANDING LEVEL(LDL) AT THE START OF S1

- For students who offered **English Language, Mathematics and/or Science** at Foundation level at PSLE, but are otherwise eligible to take most of their subjects at G3 when entering secondary school, they may choose to take these subjects at a less demanding level (LDL; i.e., G2), in consultation with their secondary schools.
- Students have the option to offer **Mother Tongue Languages (MTL)** at LDL based on their PSLE Achievement Level (AL) for the subject:

POSTING GROUP (PG)	PSLE AL FOR MTL [^]	OPTION TO OFFER MTL AT A LESS DEMANDING LEVEL
PG3	AL 6	G2
	AL 7-8	G1 or G2
PG2	AL 7-8	G1

[^] Foundation level AL A to AL C will be mapped to AL 6 to AL 8 of Standard level subjects respectively.

- Students who are eligible to offer MTL at LDL can still choose to offer MTL at-level if they prefer.

SUBJECT LEVEL FLEXIBILITY BEYOND THE START OF S1

- Beyond the start of Sec 1, students may **adjust their subject levels across their secondary school journey**.
 - Students may offer subjects, including English Language, Mother Tongue Languages, Mathematics, Science and Humanities subjects at a **more demanding level** if they meet the criteria and based on the school's holistic considerations.
 - Students who are not coping well may **offer subjects at a less demanding level**, based on their school-based performance and school's holistic considerations, to calibrate their curricular load.
 - In upper secondary, students may offer elective subjects (for example, Additional Mathematics, Art, Design & Technology) at a subject level suited to their strengths, interests and post-secondary aspirations, to **allow them to pursue their interests without adding unduly to their overall curriculum load**.
- Schools will consider **students' learning progress and developmental needs** when helping them determine their subject choices.

Important Milestones for your child in P6

**PSLE Listening
Comprehension (mid-Sep)**

**PSLE Written Exam
(26 Sep 2024) (Tentative)**

**Sec 1 Posting
Exercise (Nov)**

**WE ARE HERE
Term 1 Week 3
19 January**

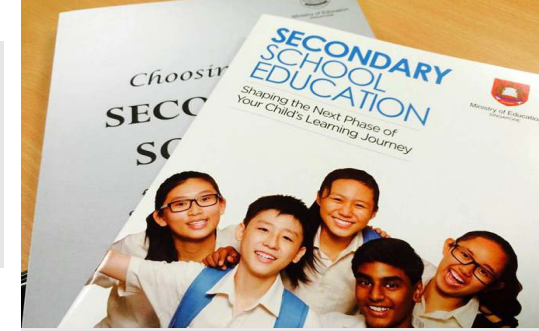


**Direct School
Admissions Exercise
- Sec (Apr-Jul)**

**PSLE Orals (mid-Aug)
Preliminary Exams
(July- August)**

Formative Assessments

**Mid Year Revision
Exercise (Apr)**



YOUR SUPPORT IN THE NEXT 8 MONTHS IS IMPORTANT.....

Ensure time for relaxation,
exercise, quality sleep,
adequate water intake and
healthy diet

Encourage your child
by celebrating small
successes

Focus on your child's strengths, look beyond
the marks

*[Guide your child to reflect and work on the
areas for improvement]*

Sense of Responsibility:
Co-develop a plan/time- table
for revision

Set realistic goals and targets
with your child [My SkillsFuture
Portal]: manage your child's and
your own expectations

Ensure your child's presence in
school everyday



**CARING FOR YOUR CHILD'S
MENTAL AND EMOTIONAL
WELL-BEING**

Prioritise and Self-Manage:
Limit screen time for gaming
on devices or social media
apps

Connect with your child
Be there for him/her
Connect with teachers/school

Stay connected with the Teachers

- Collaborate with our Teachers to better support your child.

Connect with our teachers during office hours (7.30 a.m. to 4.30 p.m. on weekdays)

- **3 Touchpoints with our P6 Teachers**

- 19 Jan – Curriculum Briefing/PSLE and Sec 1 Posting
- 6/7 Mar – Meet The Parents (Zoom)
- 24 May - Meet the Parents (F2F)

- Use official communication modes to connect with our Teachers such as Student Handbook, MOE Emails, through Parent Gateway

Teachers are not expected to share their personal mobile phone numbers with parents



To Serve To Lead



Partnering with School

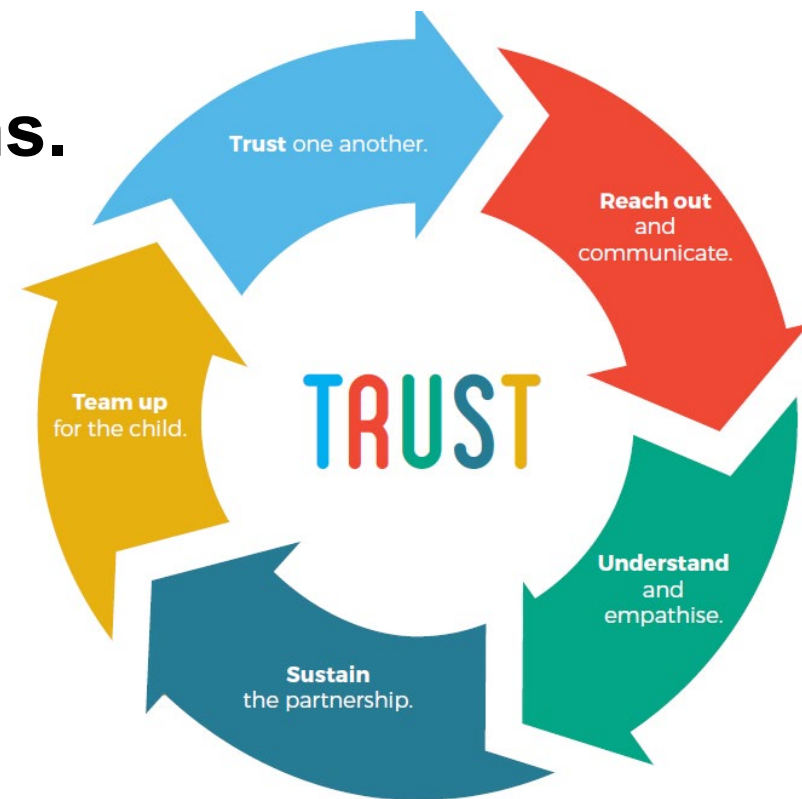
We welcome your feedback and suggestions.

Contact Us

at

punggolcove_ps@moe.edu.sg

(Turnaround time of 2 working days)

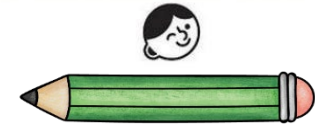


SEEK FIRST TO UNDERSTAND, THEN TO BE UNDERSTOOD'



To Serve To Lead





The best gift
you can give your
child is believing
in them no matter
the circumstance.

©Ministry of Education, Singapore

**THE PSLE IS NOT THE DESTINATION AND DOES NOT
DEFINE OUR CHILDREN
IT IS PART OF OUR CHILDREN'S EDUCATION JOURNEY**



Let's work together to bring out the best in our children and help them realise their dreams!

“Praise the process that kids engage in: their effort, their strategies, their focus, their perseverance, their improvement.”

Carol Dweck, psychologist and a professor at Stanford University

To Serve To Lead



PSLE System in 2024



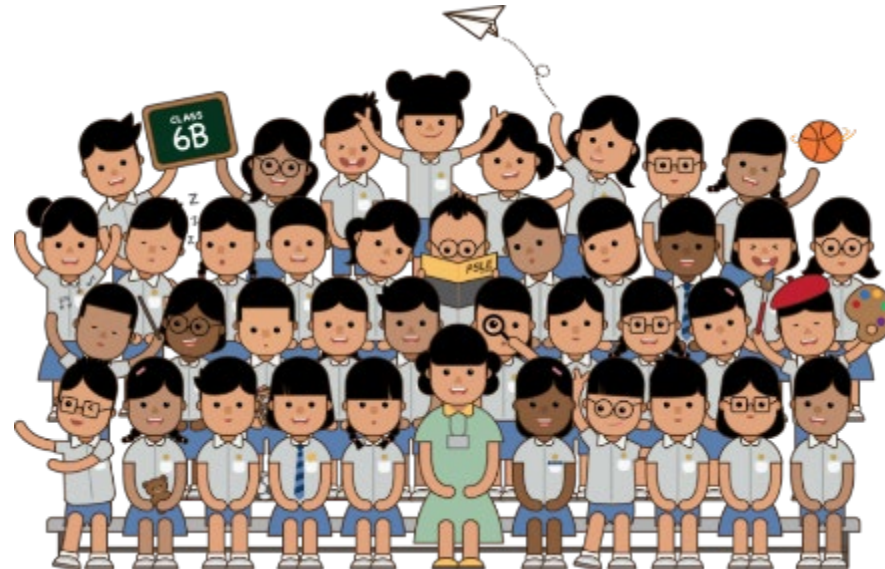
To Serve To Lead



The PSLE SCORING and S1 POSTING

**SUPPORTING STUDENTS AND PARENTS IN MAKING
INFORMED SCHOOL CHOICES FOR PSLE**

Briefing Deck to P5 and P6 Parents

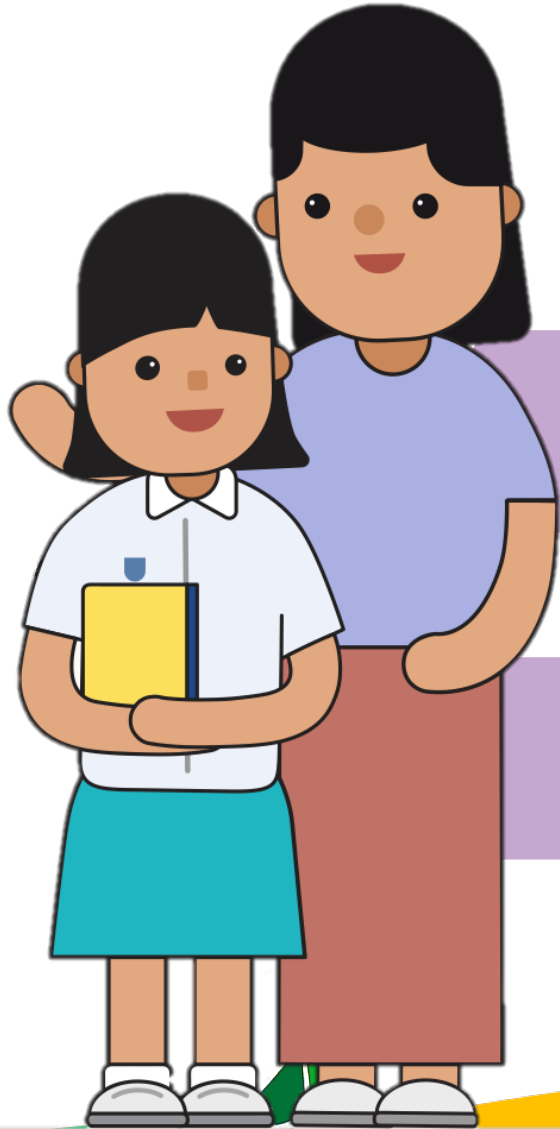


From today's session, you will walk away with...

- A better understanding of the support that your child may need in the transition journey from primary to secondary school
- Understanding Full Subject-Based Banding (Full SBB)
- Information on what to expect in secondary school



Sharing About PSLE Matters



How does the PSLE Scoring &
S1 Posting work?

How are students posted to
secondary schools?

WHAT IS THE INTENT OF THE PSLE?



A useful checkpoint at the end of primary school

A fair way to determine secondary school posting



Over the years, we have been changing the education system to help our students discover and develop their strengths, interests, abilities and talents while moving away from an over-emphasis on academic results. Our PSLE Scoring system reduces the over-emphasis on academic results by:

1

Reducing fine differentiation of students' examination results at a young age.

2

Recognising a student's level of achievement, regardless of how his/her peers have done.

3

Encouraging families to choose secondary schools holistically based on students' strengths, interests and learning needs.



To Serve To Lead



WHAT ARE ACHIEVEMENT LEVELs (AL)?

WHY ARE THE BANDS UNEVEN?

- Students with similar scores in each subject are grouped into scoring bands measured in 8 ALs.
- AL bands and mark ranges are set based on the learning objectives of the curriculum, and mirror the way we learn.

When we learn something new, after some initial practice, we often find ourselves improving significantly.

As we get better, the improvements become small steps, and finally, as we reach a high level, we inch just a little further, even after much learning and practice.

The ALs were designed to reflect this reality of learning. They help educators, students, and parents know how ready students are to access the curriculum at the next level.

AL	RAW MARK RANGE
1	≥ 90
2	85 – 89
3	80 – 84
4	75 – 79
5	65 – 74
6	45 – 64
7	20 – 44
8	< 20

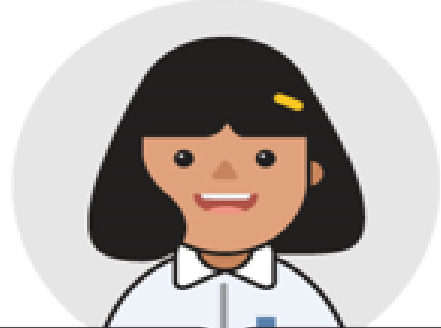
GRADING OF FOUNDATION SUBJECT GRADES

- Foundation subject grades are graded in scoring bands from **AL A to C**.
- To derive a student's overall PSLE Score for S1 Posting, AL A to AL C for Foundation level subjects are **mapped to AL 6 to AL 8 of Standard level subjects respectively**.
- This mapping is based on the learning and assessment load of the subjects, and informs students of how ready they are for the curriculum in secondary school.

FOUNDATION LEVEL AL	FOUNDATION RAW MARK RANGE	EQUIVALENT STANDARD LEVEL AL
A	75 – 100	6
B	30 – 74	7
C	< 30	8

HOW DOES THE PSLE SCORING SYSTEM WORK?

- The overall PSLE Score is made up of 4 subject Achievement Levels (ALs).
- The PSLE Score can range from 4 to 32, with 4 being the best.




Elena		PSLE Score 14
PSLE Subject	AL Score	
English	2	
Math	2	
Foundation Science	AL A = 6	
Mother Tongue Language	4	

SUBJECT-BASED BANDING (SECONDARY)

SBB (SEC) ELIGIBILITY CRITERIA

- A student scores an overall Score of 23 and AL 5 for

Example 1



ENGLISH LANGUAGE	AL 6
MOTHER TONGUE LANGUAGE	AL 6
MATHEMATICS	AL A
SCIENCE	AL 5
PSLE SCORE: 23	

= AL6

Academic Stream (2023 and before)	PSLE Score	Posting Group	Subject level for most subjects
EXPRESS	4 – 20	PG3	G3
EXPRESS / N(A) OPTION	21 and 22	PG2 or PG3	G2 or G3
N(A)	23 and 24	PG2	G2
N(A) / N(T) option	25	PG1 or PG2	G1 or G2
N(T)	26 – 30 (with AL 7 or better in EL and MA)	PG1	G1

subjects at more demanding levels based on their in-school performance, to further pursue their interests and develop to their fullest potential.

SUBJECT-BASED BANDING (SECONDARY) [SBB (SEC)] ELIGIBILITY CRITERIA

1. Which course does Bryan qualify for?

Academic Stream (2023 and before)	PSLE Score	Posting Group	Subject level for most subjects
EXPRESS	4 – 20	PG3	G3
EXPRESS / N(A) OPTION	21 and 22	PG2 or PG3	G2 or G3
N(A)	23 and 24	PG2	G2
N(A) / N(T) option	25	PG1 or PG2	G1 or G2
N(T)	26 – 30 (with AL 7 or better in EL and MA)	PG1	G1

Example 2

ENGLISH	AL6
MOTHER TONGUE	AL4
MATHEMATICS	AL5
SCIENCE	AL6

PSLE SCORE: 21

SUBJECT-BASED BANDING (SECONDARY) [SBB (SEC)] ELIGIBILITY CRITERIA

Example 3

ENGLISH	AL6
MOTHER TONGUE	AL5
MATHEMATICS	AL8
SCIENCE	AL6
<hr/>	
PSLE SCORE: 25	



Offered PG 1 or 2

Choice PG 2 : MT (G3)

**Choice PG1 :
EL and SC at G2
MT at G3**

Example 4

ENGLISH	AL6
MOTHER TONGUE	AL5
MATHEMATICS	AL8
FDN SCIENCE	ALB
<hr/>	
PSLE SCORE: 26	

= AL7

Repeat*

***Students with PSLE score of
26-30 must score AL7 or
better in BOTH EL and MA**

ELIGIBILITY CRITERIA FOR HIGHER MOTHER TONGUE LANGUAGE (HMTL)

- The eligibility criteria for taking HMTL ensures that students can cope with the higher academic load.

ELIGIBILITY CRITERIA FOR HMTL

- (i) An overall PSLE Score of 8 or better**
- (ii) An overall PSLE Score of 9 to 14 (inclusive); and attain**
 - AL 1 / AL 2 in MTL or**
 - Distinction / Merit in HMTL**

- For students who do not meet the above criteria, secondary schools will have the flexibility to offer HMTL to students if they are assessed to have high ability and interest in MTL, and are able to cope with the learning load required.

HOW DOES THE S1 POSTING WORK?

- Your child has **six choices** in selecting their secondary schools.
- Your child will be posted to a secondary school based on **academic merit, i.e., PSLE Score**, and their **choice order of schools**.
- If two or more students with the same PSLE Score vie for the last remaining place(s) in a school, the following tie-breakers are used in the following order:
 1. **CITIZENSHIP**
 2. **CHOICE ORDER OF SCHOOLS**
 3. **COMPUTERISED BALLOTING**
- The tie-breaker based on school choice order recognises the different considerations that families have in making school choices.








Tie-breakers

in the new S1 Posting System

Tie-breakers are used only if there are two or more students with the same PSLE Score vying for the last available place(s) in a school.

Here's a simplified example.

5 students are vying for the last places in the schools of their choice.

Jane Singapore Citizen 16 pts	SCHOOL CHOICES: 1) Sch A 2) Sch ... 3) Sch ... 4) Sch ...	
Bryan Singapore Citizen 20 pts	SCHOOL CHOICES: 1) Sch B 2) Sch ... 3) Sch ... 4) Sch ...	
Mary Singapore Citizen 20 pts	SCHOOL CHOICES: 1) Sch A 2) Sch B 3) Sch C 4) Sch ...	
Alan Permanent Resident 20 pts	SCHOOL CHOICES: 1) Sch A 2) Sch B 3) Sch D 4) Sch ...	
Rina Permanent Resident 20 pts	SCHOOL CHOICES: 1) Sch A 2) Sch B 3) Sch D 4) Sch E	



Students with better scores will be posted first



Tie-breaker #1: Citizenship



Tie-breaker #2: Choice order of schools



Tie-breaker #3: Computerised balloting

Jane has a better PSLE score. She will be posted first, to **School A**.



Bryan, Mary, Alan and Rina have the same score.

As Jane has taken the last available place in School A, Bryan, Mary, Alan and Rina will vie for the last available place in their next choice, **School B**.

Bryan and Mary are Singapore Citizens. They will have priority to enter **School B**.



Alan and Rina will be tie-broken out as they are Permanent Residents. They will be considered for their next choice, **School D**.

Because Bryan ranked School B higher than Mary, he will be posted to **School B**.



Since Bryan has taken the last place in School B, Mary will be posted to **School C**.



Alan and Rina have both ranked School D as their third choice. They will go through computerised balloting to vie for the last remaining place in **School D**.

Through computerised balloting, Alan is posted to **School D**.



Since Alan has taken the last place in School D, Rina will be posted to her fourth choice, **School E**.



HCL POSTING ADVANTAGE TO SAP SCHOOLS

NEW SYSTEM

Students who obtained a Distinction/Merit/Pass for HCL at the PSLE and an overall PSLE Score of 14 or better will receive a posting advantage when applying to SAP schools.

Students will be considered for admission to SAP schools in the following order:



1st

7

NO HCL

Students with better PSLE Scores will be posted first, even if they did not take HCL



2nd

8

DISTINCTION



3rd

8

MERIT



4th

8

PASS



5th

8

NO HCL

Amongst students with the same PSLE Score, those with better HCL grades will be posted first



6th

9

DISTINCTION

- Students' HCL results are denoted as 'D' (Distinction), 'M' (Merit) or 'P' (Pass).
- Students who obtain (i) a Distinction / Merit / Pass in HCL and (ii) a PSLE Score of 14 or better are eligible for posting advantage to SAP schools.
- Students are ranked taking into account their performance in HCL.
- This posting advantage applies before the tie-breakers for S1 Posting.

Choosing Suitable Secondary Schools

Factors to Consider

Preparing for S1 Posting Exercise

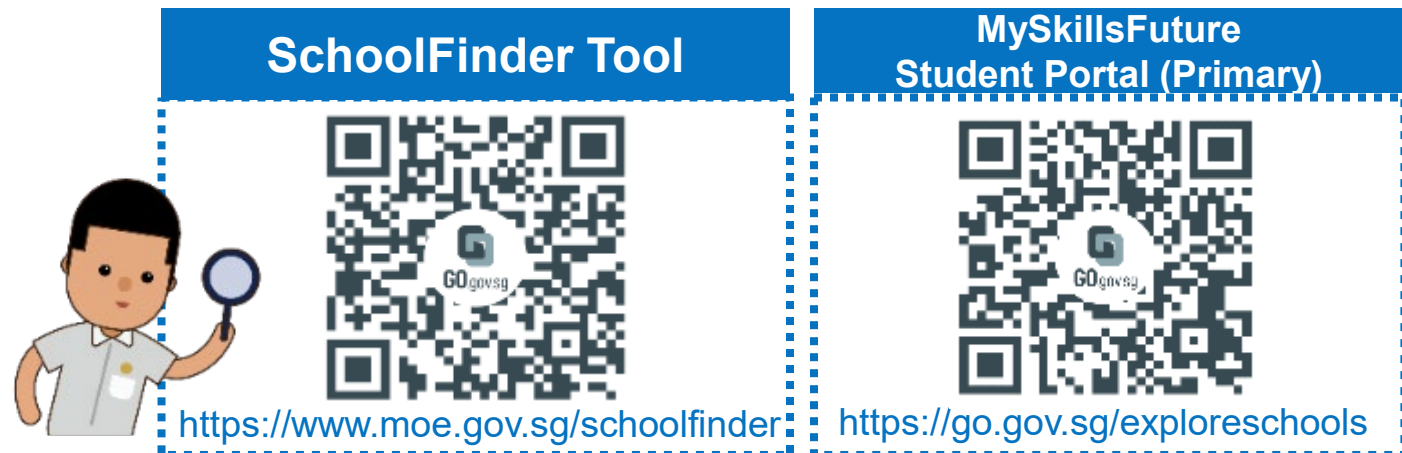


To Serve To Lead



PSLE SCORE RANGES FOR ALL SECONDARY SCHOOLS

- Use the PSLE Score ranges as a reference alongside other important factors, such as the school's distinctive programmes, Co-Curricular Activities (CCA), culture, ethos, and proximity to home when shortlisting school choices that would best fit a student's educational needs.
- The PSLE Score ranges for individual secondary schools will be available for your reference on <https://moe.gov.sg/schoolfinder> and <https://go.gov.sg/exploreschools>. They reflect the PSLE scores of the students posted into these schools at the previous year's S1 Posting Exercise.
- A school's PSLE Score range (including Cut-Off-Point) for a particular year is not pre-determined before the posting, and vary from year to year, depending on the cohort's PSLE results and their school choices in that year's S1 Posting Exercise.



HOW DO WE INTERPRET THE PSLE SCORE RANGES?

The PSLE Score range refers to the PSLE Score of the first and last student admitted to a particular school in the previous year via the S1 Posting Exercise. This shows the range of student profiles who enter each school.

Example

XX Secondary School

PSLE Score range of 20XX (previous year's S1 Posting Exercise)

Posting Group 3	15 – 20
Posting Group 2	21 – 24
Posting Group 1	25 – 28

PSLE Score of the first student posted into the school in the respective PG.

PSLE Score of the last student posted into the school in the respective PGs [i.e., the school's **Cut-Off Point (COP)**].

Note: Posting Groups will be assigned based on PSLE Scores, mapped from existing PSLE Score ranges for Express, N(A) and N(T) streams.

EXAMPLE OF AN SAP SCHOOL'S PSLE SCORE RANGE

While students need not take HCL to enter SAP schools, students who pass HCL receive a posting advantage for admission. To reflect this, the PSLE Score ranges of SAP schools include the HCL grades of the first and last student admitted in the previous year via S1 Posting.

Example

XX Secondary School

PSLE Score range of 20XX (previous year's S1 Posting Exercise)

Posting Group 3	5 (D) – 12 (P)
Posting Group 2	
Posting Group 1	

PSLE Score and HCL grade of the first student posted into the school through PG3.

PSLE Score and HCL grade of the last student posted into the school through PG3 [i.e. the school's Cut-Off Point (COP)].

SCHOOL CHOICE JOURNEY

- The PSLE Score ranges are a **useful starting point** for parents and students to consider secondary schools.
- Use this information, together with other **important factors** such as the secondary schools' distinctive programmes, CCAs, ethos and cultures, to shortlist schools that would best fit the educational needs of the student.



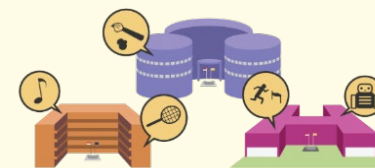
EXAMPLE: BRYAN'S JOURNEY

Bryan is in P6. Bryan had previously shortlisted 10 secondary schools based on his strengths and interests during the start of the year. Now that he has received his PSLE results, he has to decide on his 6 school options. **How should he go about it?**

BRYAN

Strengths and interests

- **Sports**, especially in **basketball** and **football**
- **Outdoor adventure**
- **Science**



PSLE Score: 16



ENGLISH	AL 3
MOTHER TONGUE	AL 4
MATHEMATICS	AL 5
SCIENCE	AL 4

PSLE SCORE: 16

EXAMPLE: BRYAN'S JOURNEY

Bryan reviews his shortlisted choices based on his PSLE Score and their PSLE Score ranges. He considers the distance from his home to the schools and makes a note on the schools that are nearer his home that have programmes that he is interested in (related to sports and science, with basketball or football CCAs).

After exploring several options, Bryan is interested in the following schools because they have Cut-Off Points (COPs) around his PSLE Score, offer sports programmes, basketball and football as CCAs, and science-related ALPs.

Secondary School A

ALP: Game Design and Robotics

LLP: Sports and Outdoor Education

CCAs: Offers basketball, football

Indicative PSLE Score range: 14 - 17

Secondary School H

ALP: Robotics and Automation

LLP: Community and Youth Leadership

CCAs: Offers basketball, football

Indicative PSLE Score range: 11 - 16

Secondary School M

ALP: Enhanced Music Programme

LLP: Digital Media

CCAs: Offers basketball, football

Indicative PSLE Score range: 15 - 18

EXAMPLE: BRYAN'S JOURNEY

Keeping in mind that he has **6** school options, Bryan also considers **other possible choices** near his home:

Secondary School E

ALP: Environmental Science and Sustainable Living

LLP: Music and Performing Arts

CCAs: Offers basketball, football

Indicative PSLE Score range: 13 - 17

Secondary School T

ALP: Digital Media

LLP: Sports and Outdoor Education

CCAs: Offers basketball, football

Indicative PSLE Score range: 15 - 19

Secondary School P

ALP: Aerospace Engineering

LLP: Community and Youth Leadership

CCAs: Offers football

Indicative PSLE Score range: 17 - 20

Bryan **visits these schools' virtual open houses** with his parents to find out more about their **programmes** and the **school culture**. Through the virtual session, he hears from their students their experiences.

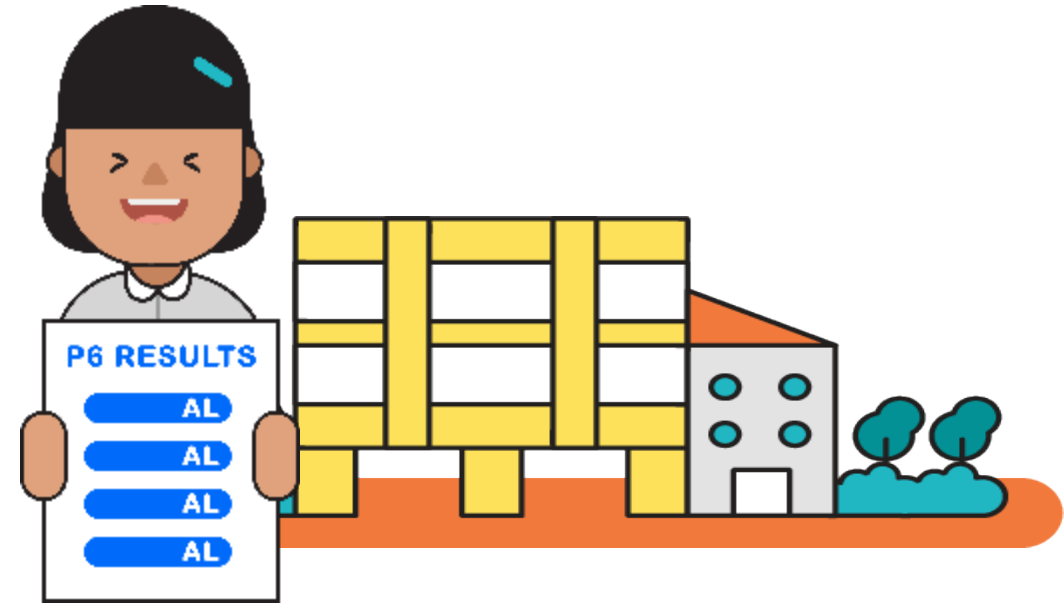
Bryan is ready to consider how to rank and submit all his six school options for the S1 Posting Exercise. He also includes a few schools where his PSLE Score is better than the school's Cut-Off Point (COP) as the indicative PSLE Score ranges may vary from year to year.

Note: Depending on your child's PSLE Score, he/she may be offered a course option. If your child is eligible for 2 courses, he/she must choose 1 course before submitting his/her school choices. The selected course will apply to all the school choices.

PREPARING FOR THE S1 POSTING EXERCISE

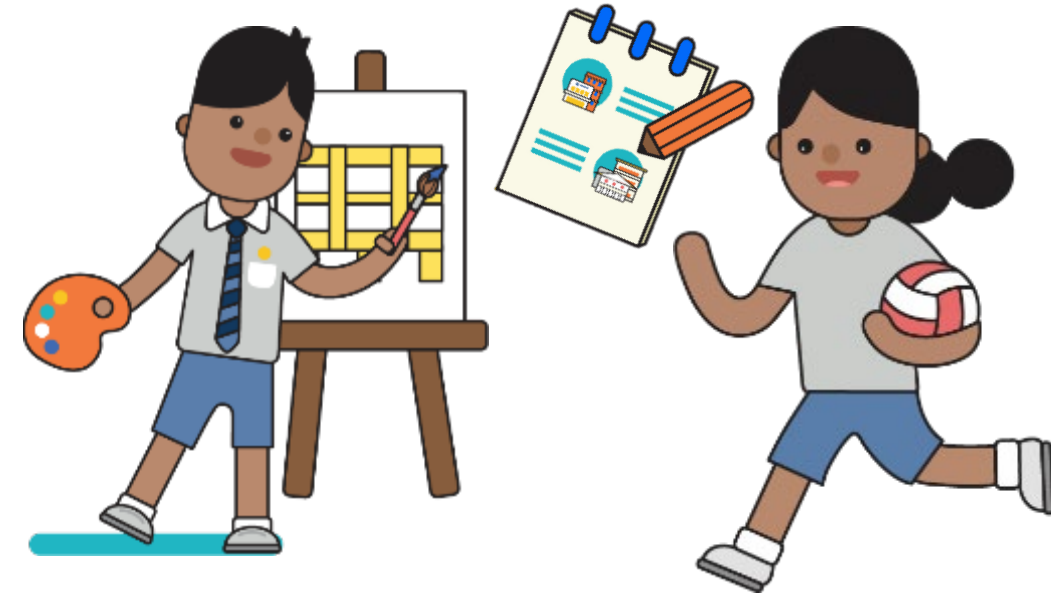
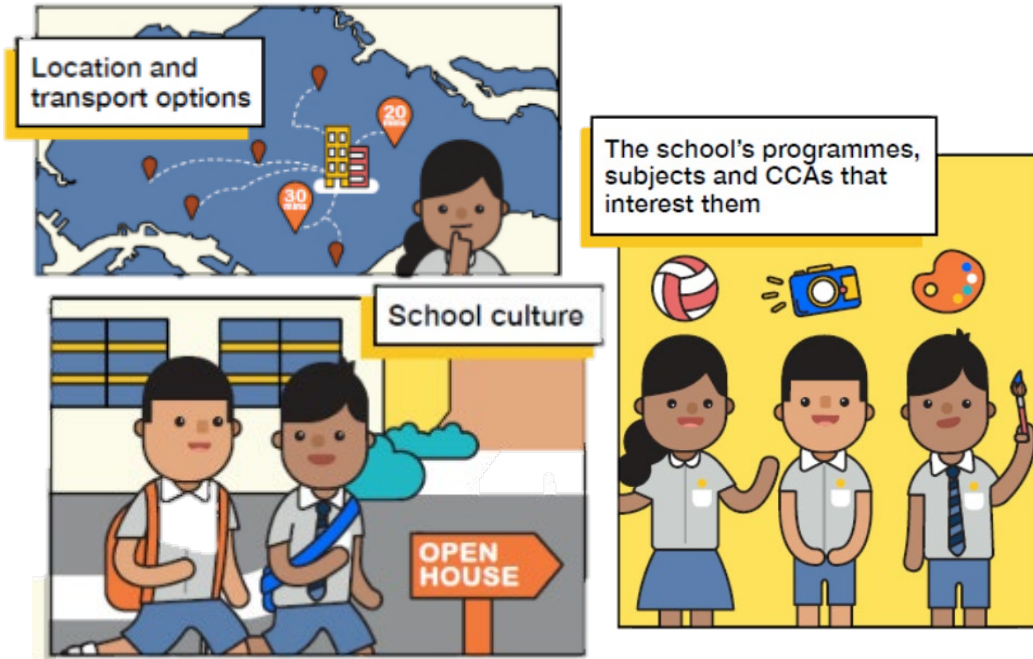


Use all 6 options with a range of Cut-off Points as this will increase your child's chances of being posted to a school of their choice.



Take reference from schools' PSLE Score ranges, which serve as a guide for you and your child to shortlist school choices. Consider at least 2-3 schools where your child's PSLE Score is better than the school's Cut-off Point.

PREPARING FOR THE S1 POSTING EXERCISE



Shortlist schools that offer programmes that cater to your child's strengths, interests, abilities, talents and learning needs, as well as provide suitable learning environments.

Rank your child's preferred school higher in the choice order of schools. This will increase your child's chances of being posted to that school, if they need to undergo tie-breaking.

TIPS FOR PARENTS!

Be open and flexible when discussing your child's preferences, needs and choices.

Manage your own expectations and do not project these expectations onto your child.

Have regular conversations with your child to understand more about his/her strengths, interests, abilities, talents and aspirations.

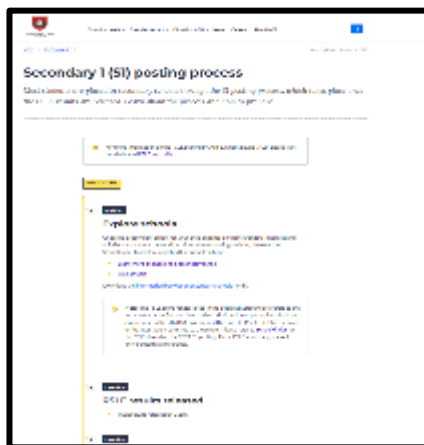
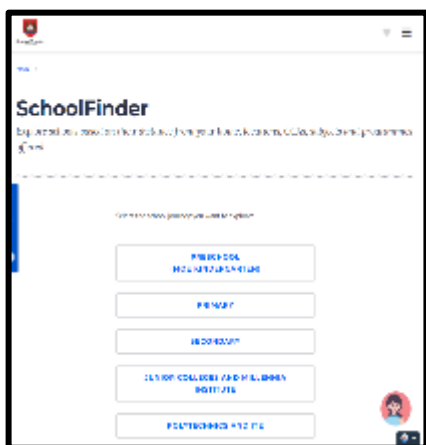


Affirm your child and offer support when he/she shares his/her plans with you.

PREPARING FOR THE S1 POSTING EXERCISE

SCHOOL
FINDER

MySKILLSfuture



- Release of **S1 Posting results**



- Release of **PSLE results**
- Online Submission of **S1 School Choices and Options**



OCTOBER

NOVEMBER

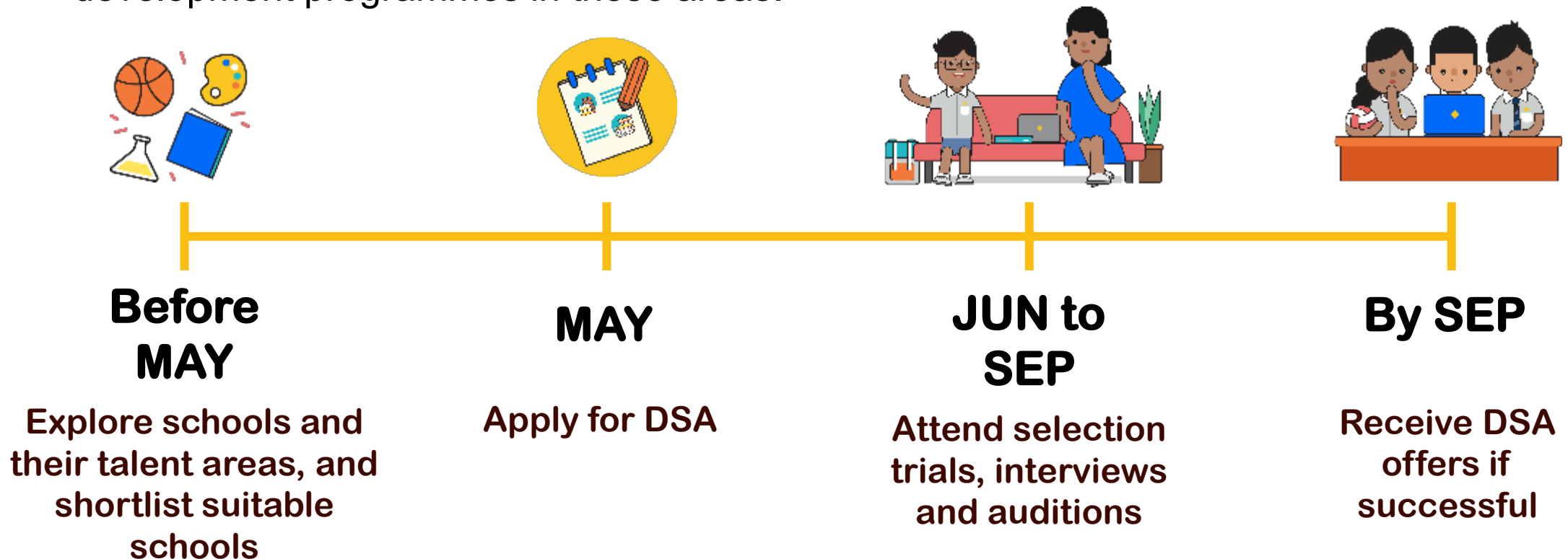
DECEMBER

To Serve To Lead



ENTERING SCHOOLS THROUGH DSA-SEC

- There is no change to the application and selection process with the shift to Full SBB.
- If your child has specific talents and strengths beyond the PSLE (e.g. areas such as sports, performing arts and leadership), consider the **Direct School Admission-Secondary (DSA-Sec)** as an alternative admission pathway to access secondary schools that have talent development programmes in these areas.



Academic Matters



To Serve To Lead



PCPS Assessment Plan

LEVEL	TERM 1	TERM 2 (Apr)	TERM 3 (July – August)	TERM 4
PRIMARY 6	-	Mid-Year Revision Exercise (Full paper)	100% Prelim	-



To Serve To Lead



Assessment Matters

- As there is no MYE for all levels starting last year, the school will continue to communicate with you on students' progress through Meet-The-Parents Sessions at the end of Term 1 and Term 2.
- There will also be non-weighted timed practices such as topical reviews put in place for P6 students to help them get accustomed to the PSLE format as well as to check on their learning progress thus far.



Preliminary Exams

- **Topics and Weighting :**

- Assessment Letter will be issued at a later date.

- **Absences:**

- Any absence must be supported by medical certificate issued by a medical doctor. Letters of excuses are not acceptable.

NOTE:-

- If your child/ward is unwell, he/she should be resting and recuperating at home.
- The well-being of the child is MOST IMPORTANT.



Academic Matters – Support from School

Term 1:

- P6 Remediation will commence in Term 1 Week 4 (**26 Jan 2024**)
- Every Friday 2.00 p.m. – 4.00 p.m.

Term 2 onwards:

- Every Monday & Friday 2.00 p.m. – 4.00 p.m.
- *Letter will be issued at a later date.*



To Serve To Lead



Well-being Matters



To Serve To Lead



Attendance

- Encourage our students to be early and punctual for school.
- Students who are not in class by 7.30a.m. will be considered late.
- For persistent latecomers, students will be referred to the HOD Discipline and Student Management for further actions.



Absence from School

- Medical Certificate or a letter from parent/guardian is needed to explain child's absence. (Limit of 5 letters per semester)
- Call the General Office and leave a message for your child/ward Form Teacher.
- For matters pertaining to Covid-19, please reach out to the form teachers or school for clarifications.
- Remind your child/ward to **hand** the MC or letter to their Form Teacher when he/she is back in school.



Communication between School and Home

- Parents Gateway for School/MOE Notifications
- Student Handbook
- Make appointments to see your child's teachers or School Personnel through GO or email (within office hours from 7.30 am to 4.30 pm)
- Form teachers' alternative platforms
 - FTs will share their preferred mode of communication later in the respective class

*



To Serve To Lead



Communication with External Stakeholders

- For communication with external stakeholders such as school dental services, school bookshop, school bus service, school uniform and student care centre, please refer to the following for their contact details:
 - Student Handbook
 - School Website (For Parents – Useful Links)



School-Home Partnership

- Familiarise yourself with school communication platforms
- Read the Student Handbook, parent memos & School Notifications
- Build good relationships and trust the teachers to want the best for each student



To Serve To Lead



Attire Decorum - Uniform

Rationale:

- Uniform teaches decorum, inculcate values and help to establish in our children - clear expectations of how they should relate to teachers and peers within the school community.

Expectations:

1. **Students should wear uniform when there is no PE or PAL Lessons.**
2. **P1 and P2** students should come to school in their PE attire on days when there is PE or PAL. They can remain in their PE attire on those days
3. **P3 to P6** students who have PE lessons before recess, should come to school in their PE attire from home. They are required to change into their uniform during recess.
4. **P3 to P6** students who have PE lessons after recess, should come to school in their uniform from home. They can change into their PE attire during recess.

Implementation:

- Students will exercise and work towards meeting the attire decorum expectations from **Term 2 onwards**.
- School personnel will be educating the students on their self and time management, as well as responsibilities in practicing their attire decorum.



To Serve To Lead



Attire Decorum - Uniform

Parents' Support:

- School seeks parents' support in
 - ensuring that their child / ward comes to school in the correct attire and
 - guiding them to be responsible in managing their attire decorum.



Thank You



To Serve To Lead

