



Punggol Cove Primary School

Primary 6
Curriculum Briefing 2023



To Serve To Lead



School Vision, Mission and Values

Mission

Nurturing the Whole Child,
Growing Future Leaders

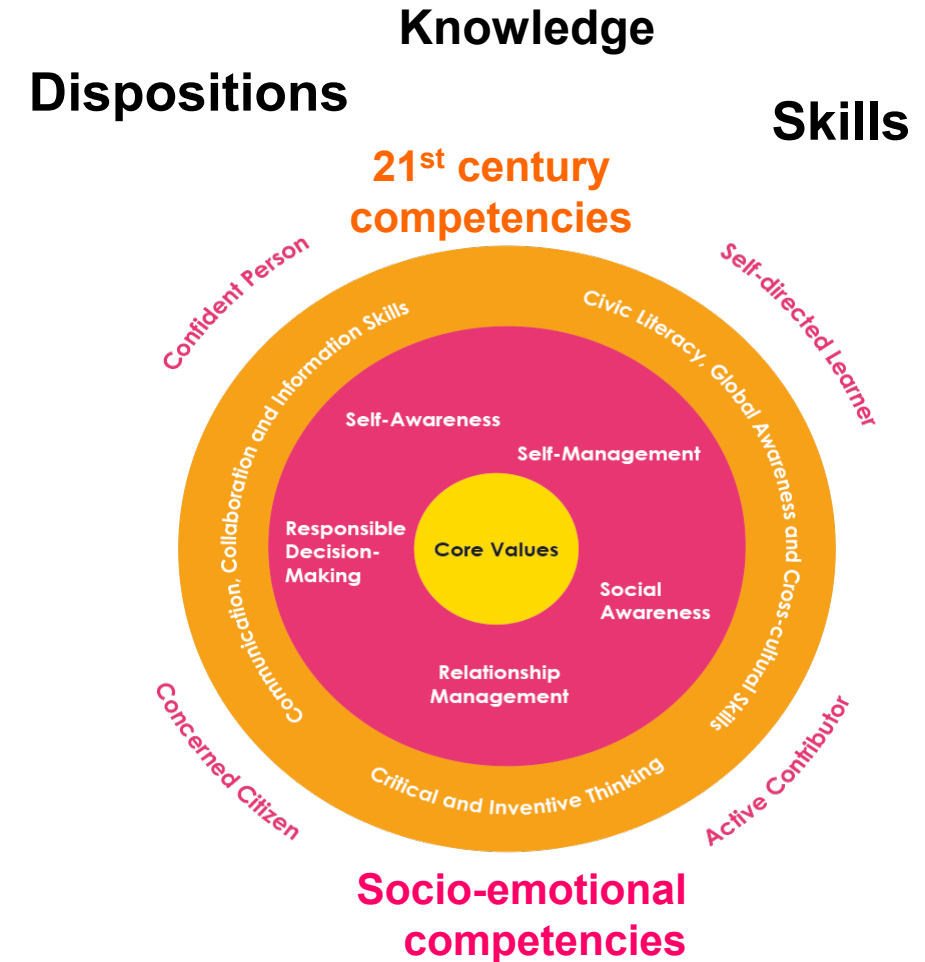
Vision

Every Student, An Educated
Child and Contributing
Citizen, Ready to Serve and
Lead

**Purposeful Parental
Engagement**



**Empathy, Mindfulness, Care
Values**



To Serve To Lead



Your Child at P6



CHOICES

SUPPORTING YOUR CHILD DURING THIS PRE-PSLE PERIOD ...

What are your
child's aspirations
and goals?

Managing
Expectations

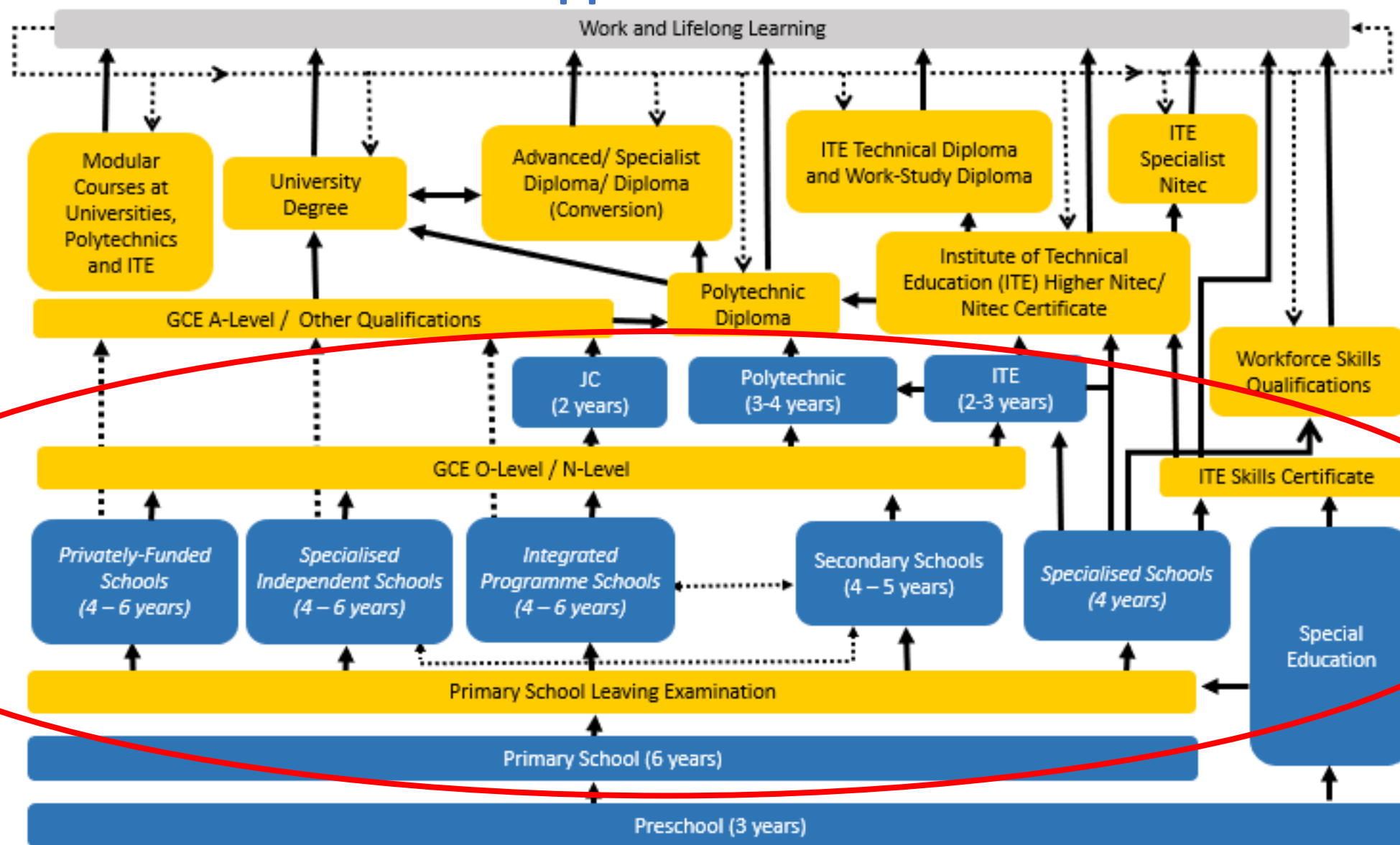
PSLE

Courses of
Study : IP,
Express, N(A)
or N(T)



Secondary School
Choices :
Choice Matters!

Educational Pathways Today with More Diverse Pathways and Opportunities



Important Milestones for your child in P6

PSLE Written Exam
(28 Sep 2023) (Tentative)

**PSLE Listening
Comprehension (mid-Sep)**

**Sec 1 Posting
Exercise (Nov)**

WE ARE HERE
Term 1 Week 4
End January

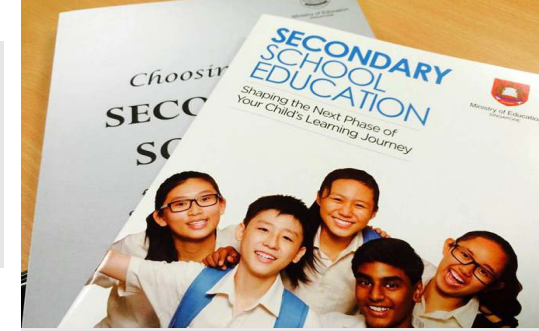


**Direct School
Admissions Exercise
- Sec (Apr-Jul)**

PSLE Orals (mid-Aug)
Preliminary Exams
(July- August)

Formative Assessments

**Mid Year Revision
Exercise (May)**



YOUR SUPPORT IN THE NEXT 8 MONTHS IS IMPORTANT.....

Ensure time for relaxation,
exercise, quality sleep,
adequate water intake and
healthy diet

Limit screen time for
gaming on devices or
social media apps

- Connect with your child
 - Be there for him/her
- Connect with teachers/school

Encourage your child
by celebrating small
successes

Focus on your child's strengths,
look beyond the marks
*[Guide your child to reflect and
work on the areas for
improvement]*

Co-develop a plan/time- table
for revision

Set realistic goals and targets
with your child [My SkillsFuture
Portal]: manage your child's and
your own expectations

Ensure your child's presence in
school everyday



**CARING FOR YOUR CHILD'S
MENTAL AND EMOTIONAL
WELL-BEING**



Academic Matters



To Serve To Lead





PCPS Assessment Plan

LEVEL	TERM 1	TERM 2 (May)	TERM 3 (July – August)	TERM 4
PRIMARY 6	-	Mid-Year Revision Exercise (Full paper)	100% Prelim	-



To Serve To Lead



Assessment Matters

- As there will be no MYE for all levels starting 2023, the school will continue to communicate with you on students' progress through Meet-The-Parents Sessions at the end of Term 1 and Term 2.
- There will also be non-weighted timed practices put in place for P6 students to help them get accustomed to the PSLE format as well as to check on their learning progress thus far.



Preliminary Exams

- **Topics and Weighting :**

- Assessment Letter will be issued at a later date.


- **Absences:**

- Any absence must be supported by medical certificate issued by a medical doctor. Letters of excuses are not acceptable.

NOTE:-

- If your child/ward is unwell, he/she should be resting and recuperating at home.
- The well-being of the child is **MOST IMPORTANT.**





Academic Matters – Support from School

Term 1:

- P6 Remediation will commence in Term 1 Week 5 (3 February)
- Every Friday 2.00 p.m. – 4.00 p.m.

Term 2 onwards:

- Every Monday & Friday 2.00 p.m. – 4.00 p.m.
- *Letter will be issued at a later date.*



To Serve To Lead





PSLE System in 2023



To Serve To Lead



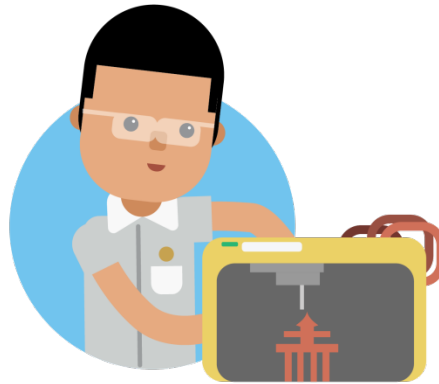
WHAT DO OUR CHILDREN NEED TO THRIVE IN THE FUTURE?



STRONG FOUNDATION

For example:

- Literacy
- Numeracy
- Social-emotional Competencies



21ST CENTURY COMPETENCIES

For example:

- Global awareness
- Critical and Inventive thinking
- Communication and Collaboration



VALUES

For example:

- Resilience
- Integrity
- Care



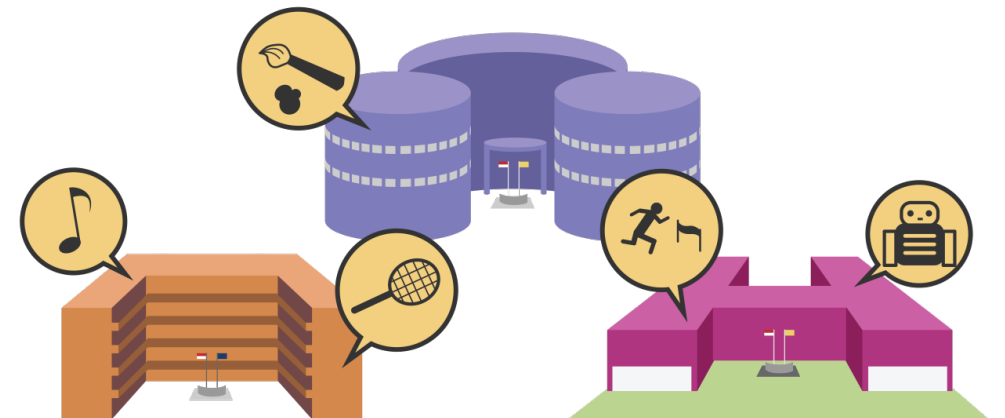
OUR EDUCATION SYSTEM AIMS TO:

NURTURE WELL-ROUNDED INDIVIDUALS

- Develop students holistically in every domain of learning
- Equip students with knowledge, skills, values and competencies for life

PROVIDE OPPORTUNITIES FOR CHILDREN TO DISCOVER AND DEVELOP THEIR STRENGTHS & INTERESTS

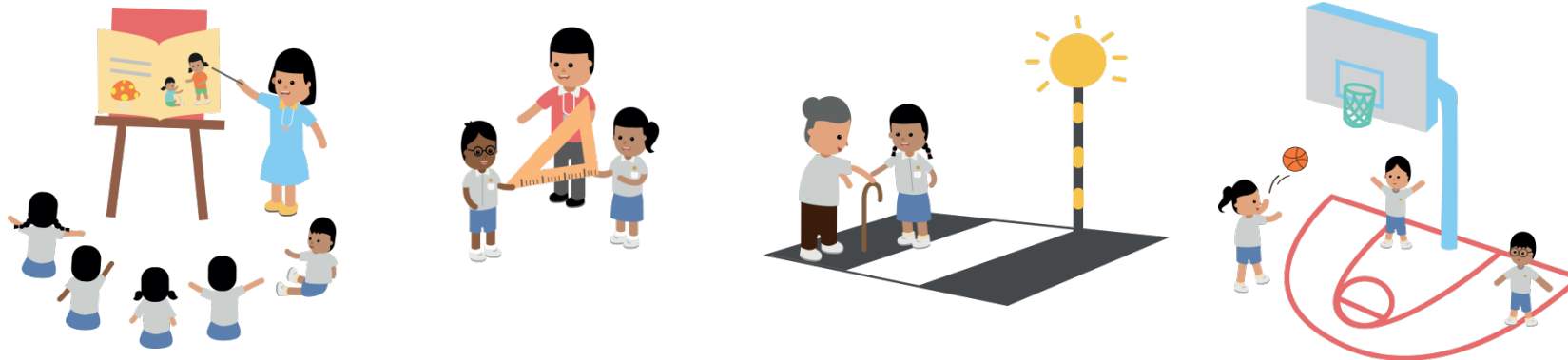
- Diversified school landscape
- Multiple pathways at various stages





THE PSLE CHANGES ARE PART OF A BIGGER STORY

Over the years, we have been fine-tuning the education system to help our students discover and develop their strengths and interests while moving away from an over-emphasis on academic results. This will better enable them to lead fulfilling lives.

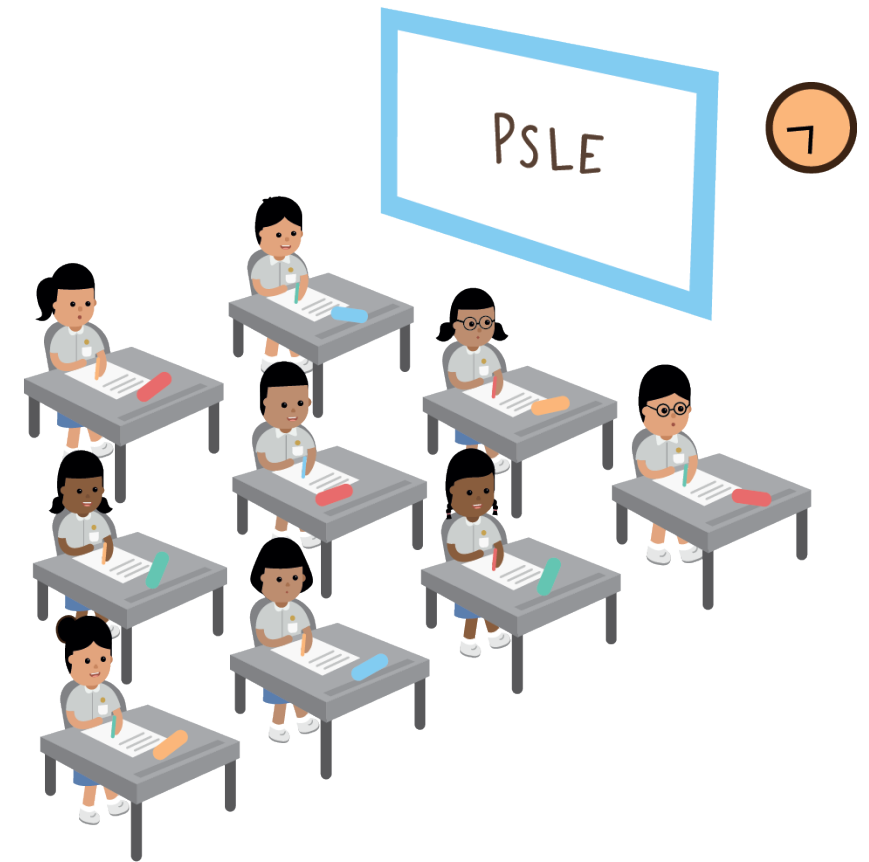


The changes to the PSLE scoring and S1 posting are another step in this direction.



THE PSLE REMAINS A USEFUL CHECKPOINT

It gauges the level of students' learning in the core subjects at the end of six years of primary school and guides his future choices.



WHAT THE NEW PSLE SCORING SYSTEM AIMS TO DO

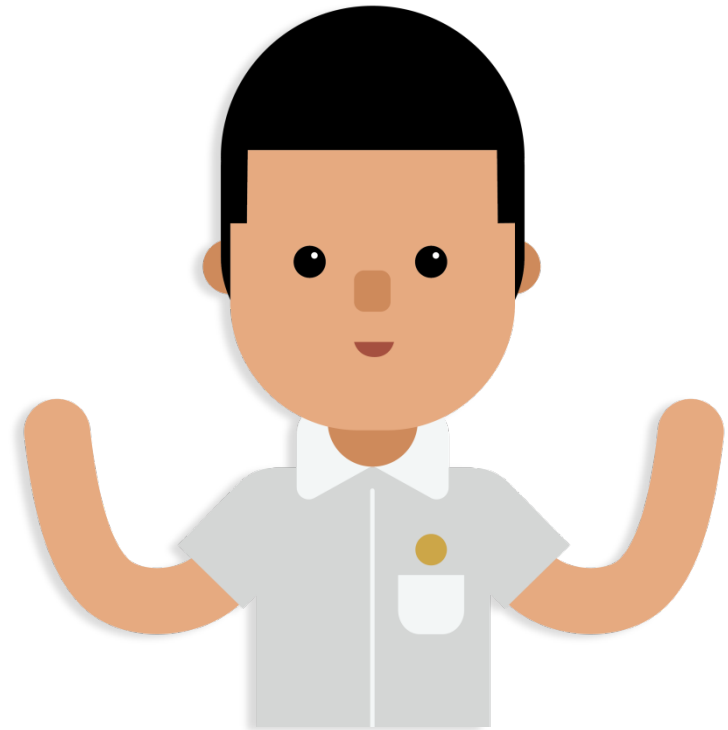
- Reduce fine differentiation of students at a young age based on exam scores.
- Recognise a student's level of achievement in each subject, regardless of how his peers have done.





OVERVIEW

- How PSLE scoring works
- How S1 posting works
- Other issues
- Implementation
- Our hopes for our children





HOW PSLE SCORING WORKS





STUDENTS WITH SIMILAR SCORES IN EACH SUBJECT WILL BE GROUPED INTO THE SAME ACHIEVEMENT LEVEL

- There will be 8 Achievement Levels (ALs), with AL1 being the best.
- A student's AL for each subject will reflect his level of achievement, rather than how he has performed relative to his peers.

PER SUBJECT
AL 1 (BEST)
AL 2
AL 3
AL 4
AL 5
AL 6
AL 7
AL 8 (UNGRADED)



WHY 8 ACHIEVEMENT LEVELS?

- This offers a good balance.
- It reduces fine differentiation between students while still giving parents and educators a gauge of a student's progress at the end of primary school.
- Students can then be matched to suitable academic programmes in secondary schools.

PER SUBJECT
AL 1 (BEST)
AL 2
AL 3
AL 4
AL 5
AL 6
AL 7
AL 8 (UNGRADED)

REFERENCE RAW MARK RANGES

- To guide school-based assessments, we will provide reference raw mark ranges for each AL.
- These are based on learning objectives of the curriculum.

Considerations

- To have educationally meaningful differentiation of students.
- At the top ALs, the ranges are narrower as the PSLE is designed to show what students can do – on average, about half of the students will score AL4 or better.

AL	RAW MARK RANGE
1	≥ 90
2	85 – 89
3	80 – 84
4	75 – 79
5	65 – 74
6	45 – 64
7	20 – 44
8	< 20

FOUNDATION-LEVEL SUBJECTS WILL ALSO BE SCORED ON ACHIEVEMENT LEVELS

- Foundation-level subjects are designed to support a small number of students who may not be able to cope with Standard-level subjects.
- This enables them to focus on building up strong fundamentals so that they are better prepared for secondary school.
- This way, the student will also build confidence to pursue learning at a level suitable for them.

Grades for Foundation	Foundation Raw Mark Range	Equivalent Standard Level AL
A	75 - 100	6
B	30 - 74	7
C	< 30	8

FROM T-SCORE TO WIDER SCORING BANDS

- The PSLE Score replaces the T-score aggregate.
- It is obtained by adding the ALs of four subjects.
- The PSLE Score ranges from 4 to 32, with 4 being the best possible score.
- Students will be placed in secondary school courses based on their overall PSLE score – Express, Normal (Academic) or Normal (Technical).



ENGLISH	AL3
MOTHER TONGUE	AL2
MATHEMATICS	AL1
SCIENCE	AL2

PSLE SCORE: 8

PLACEMENT OUTCOME	PSLE SCORE
EXPRESS	4 – 20
EXPRESS / N(A) OPTION	21 – 22
N(A)	23 – 24
N(A) / N(T) option	25
N(T)	26-30, with AL7 or better in both EL <u>and</u> MA

SCORING OF FOUNDATION SUBJECTS FOR S1 POSTING

- A student's PSLE Score is the sum of the four AL scores across his/her Standard and Foundation subjects.
- Students taking Foundation subjects are eligible for the Express Course, as long as they meet the course placement criteria.
- With Full Subject-based Banding in secondary schools, students may also take subjects at a higher level for those that they are strong in.



ENGLISH	AL3
FOUNDATION MOTHER TONGUE	ALB
FOUNDATION MATHEMATICS	ALB
SCIENCE	AL5

PSLE SCORE: 22

PLACEMENT OUTCOME	PSLE SCORE
EXPRESS	4 – 20
EXPRESS / N(A) option	21 – 22
N(A)	23 – 24
N(A) / N(T) option	25
N(T)	26 – 30, with AL7 or better in both EL <u>and</u> MA

SUBJECT-BASED BANDING (SECONDARY) SBB (SEC) ELIGIBILITY CRITERIA


Under the new PSLE scoring system, the SBB (Sec) eligibility criteria is as follows:

FOR STUDENTS OFFERED THE N(A) OR N(T) COURSE	
PSLE SUBJECT GRADE	OPTION TO TAKE SUBJECT AT
AL 5 or better in a Standard level subject	Express level
AL 6 or better in a Standard level subject <u>OR</u> AL A in a Foundation level subject	N(A) level

SUBJECT-BASED BANDING (SECONDARY)

SBB (SEC) ELIGIBILITY CRITERIA

Example 1



ENGLISH LANGUAGE	AL 6
MOTHER TONGUE LANGUAGE	AL 6
MATHEMATICS	AL A
SCIENCE	AL 5
PSLE SCORE: 23	

= AL6

- A student scores an overall Score of 23 and AL 5 for Science will be placed in the N(A) course. He will be eligible **to take Science at a more demanding level (i.e. Express level)** at Secondary 1.
- Taking up Science at a more demanding level would allow him to learn at a level more suited to his pace of learning, aptitudes and passions. It could also motivate him to be more meaningfully engaged.
- **Eligible students can discuss with their parents and teachers to decide whether to accept the offer.**
- As students grow and develop in secondary school, they will continue to have **more opportunities to take subjects at more demanding levels based on their in-school performance**, to further pursue their interests and develop to their fullest potential.

SUBJECT-BASED BANDING (SECONDARY) [SBB (SEC)] ELIGIBILITY CRITERIA

1. Which course does Bryan qualify for?

Offered Express/N(A) course

2. If Bryan decides to choose the Express course, he will do ALL subjects at Express level.

3. If Bryan decides to be in N(A) course, which subjects can he take at Express level?

Mother Tongue and Mathematics

Example 2

ENGLISH	AL6
MOTHER TONGUE	AL4
MATHEMATICS	AL5
SCIENCE	AL6

PSLE SCORE: 21



SUBJECT-BASED BANDING (SECONDARY) [SBB (SEC)] ELIGIBILITY CRITERIA

Example 3

ENGLISH	AL6
MOTHER TONGUE	AL5
MATHEMATICS	AL8
SCIENCE	AL6
<hr/>	
PSLE SCORE: 25	

Offered N(A)/N(T) course

Choice N(A) : MT (Exp)

**Choice N(T) :
EL and SC at N(A)
MT (Exp)**



Example 4

ENGLISH	AL6
MOTHER TONGUE	AL5
MATHEMATICS	AL8
FND SCIENCE	ALB
<hr/>	
PSLE SCORE: 26	

= AL7

Repeat*

***Students with PSLE score of
26-30 must score AL7 or
better in BOTH EL and MA**



WHAT REMAINS

- Same 4 subjects are tested, and scores are awarded to guide students' choices for the next stage of their education journey
- **Subject curriculum** will be continually updated. This is not related to the PSLE scoring and S1 posting changes.

WHAT CHANGES

- The T-score Aggregate will be replaced by the PSLE Score, to reduce the fine differentiation of our students at a young age based on exam scores.
- A student's AL for each subject **will reflect his own achievement**, rather than how he has performed relative to his peers.

USE OF HCL FOR ADMISSION INTO SAP SCHOOLS









To Serve To Lead

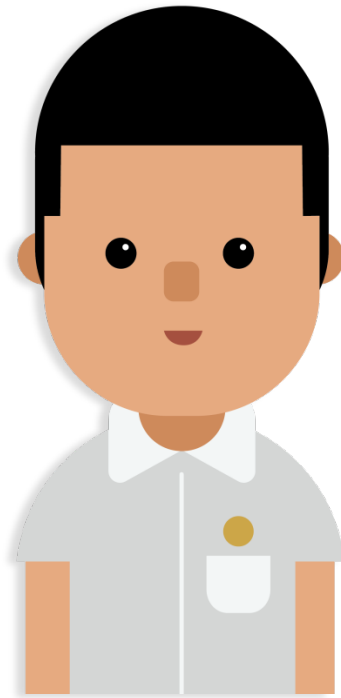


THIS HCL POSTING ADVANTAGE FOR ENTRY TO SAP SCHOOLS WILL CONTINUE

- Students will be ranked taking into account their performance in HCL.
- This posting advantage applies before the tie-breakers for S1 posting.

1st		7	NO HCL
2nd		8	DISTINCTION
3rd		8	MERIT
4th		8	PASS
5th		8	NO HCL
6th		9	DISTINCTION

ELIGIBILITY FOR SECONDARY SCHOOL HIGHER MOTHER TONGUE LANGUAGE (HMTL)





ELIGIBILITY FOR HMTL IN SECONDARY SCHOOLS

- The eligibility criteria for taking HMTL is intended to ensure that students can cope with the higher academic load, and takes reference from the current criteria.

ELIGIBILITY CRITERIA FOR SECONDARY SCHOOL HMTL

(i) PSLE Score of 8 or better

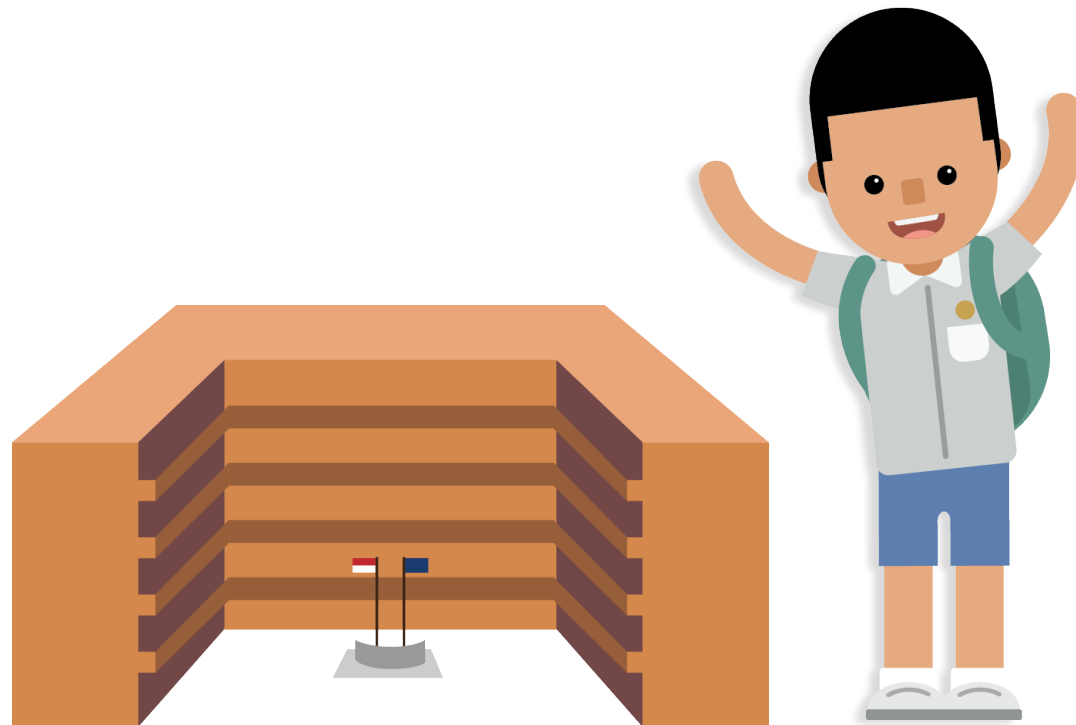
OR

(ii) PSLE Score of 9 to 14 inclusive; and attain

- AL1 / AL2 in MTL or
- Distinction / Merit in HMTL

- For students who do not meet the above criteria, secondary schools will continue to have the flexibility to offer HMTL to students, if they are assessed to have high ability and interest in MTL and are able to take HMTL without affecting their performance in other subjects.

HOW S1 POSTING WORKS



CHOICE ORDER OF SCHOOLS WILL MATTER MORE

- Students continue to have **six choices** in selecting their secondary schools.
- Students will be posted to a secondary school based on **academic merit, i.e. PSLE Score**, and their **school choice rank order**.
- If two students with the same PSLE Score vie for the last remaining place in a school, the following tie-breakers will be used in the following order:
 1. CITIZENSHIP
 2. CHOICE ORDER OF SCHOOLS **NEW!**
 3. COMPUTERISED BALLOTING
- The new tie-breaker based on school choice order recognises the different considerations that families have in making school choices.








Tie-breakers

in the new S1 Posting System

Here's a simplified example.

5 students are vying for the last places in the schools of their choice.

Jane Singapore Citizen 16 pts	SCHOOL CHOICES: 1) Sch A 2) Sch ... 3) Sch ... 4) Sch ...	
Bryan Singapore Citizen 20 pts	SCHOOL CHOICES: 1) Sch B 2) Sch ... 3) Sch ... 4) Sch ...	
Mary Singapore Citizen 20 pts	SCHOOL CHOICES: 1) Sch A 2) Sch B 3) Sch C 4) Sch ...	
Alan Permanent Resident 20 pts	SCHOOL CHOICES: 1) Sch A 2) Sch B 3) Sch D 4) Sch ...	
Rina Permanent Resident 20 pts	SCHOOL CHOICES: 1) Sch A 2) Sch B 3) Sch D 4) Sch E	



Students with better scores will be posted first



Tie-breaker #1: Citizenship



Tie-breaker #2: Choice order of schools



Tie-breaker #3: Computerised balloting

Jane has a better PSLE score. She will be posted first, to **School A**.



Bryan, Mary, Alan and Rina have the same score.

As Jane has taken the last available place in School A, Bryan, Mary, Alan and Rina will vie for the last available place in their next choice, **School B**.

Bryan and Mary are Singapore Citizens. They will have priority to enter **School B**.



Alan and Rina will be tie-broken out as they are Permanent Residents. They will be considered for their next choice, **School D**.

Because Bryan ranked School B higher than Mary, he will be posted to **School B**.



Since Bryan has taken the last place in School B, Mary will be posted to **School C**.



Alan and Rina have both ranked School D as their third choice. They will go through computerised balloting to vie for the last remaining place in **School D**.

Through computerised balloting, Alan is posted to **School D**.



Since Alan has taken the last place in School D, Rina will be posted to her fourth choice, **School E**.



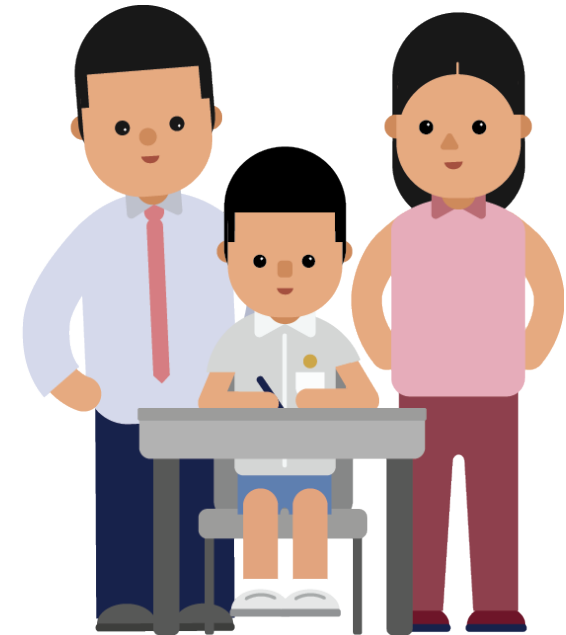
CHOICE ORDER OF SCHOOLS TO MATTER MORE

WITH BROADER SCORING BANDS:

- More students will have the same PSLE Score.
- Schools will be less differentiated based on cut-off points.

WHY CHOICE?

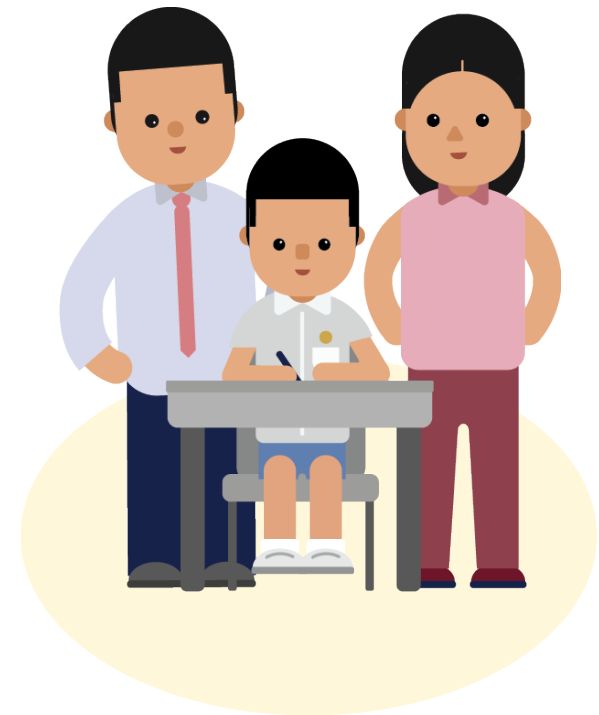
We recognise that families have different considerations when choosing secondary schools, for example, the school's ethos, culture, programmes and CCAs, as well as distance between the school and home.



Academic merit remains the **first criterion** for secondary school posting. Choice order will be a new tie-breaker.

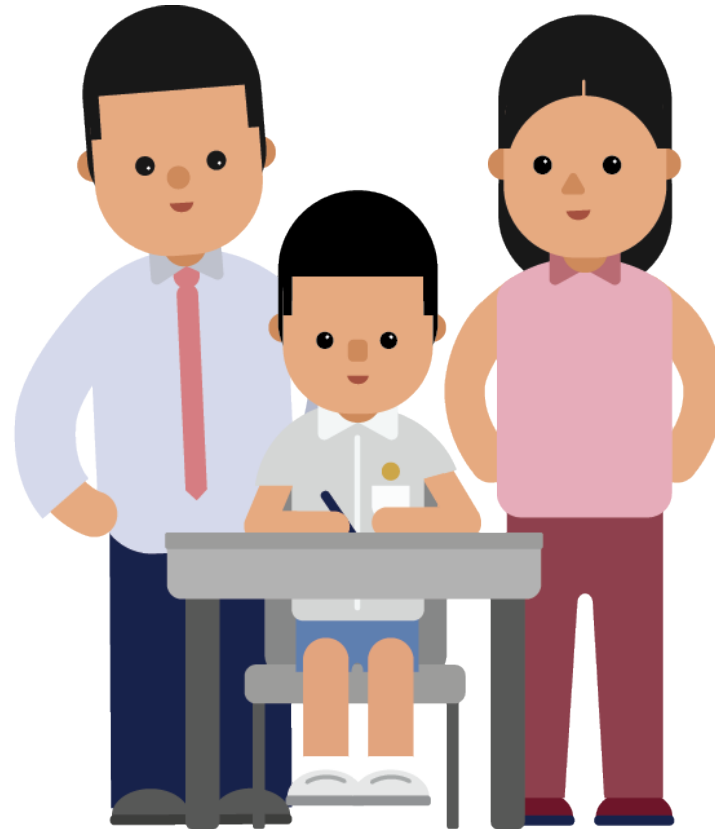
NEW SYSTEM

- Choice order is introduced as a new tie-breaker to recognise the different considerations that families have in making school choices.
- To guide families, we will provide information on each school's unique programmes and indicative cut-off points.





CHOOSING A SUITABLE SECONDARY SCHOOL



SCHOOL CHOICE JOURNEY

- The PSLE Score ranges are a useful reference point for parents and students to consider secondary schools.
- Parents and students are encouraged to use this information, together with other factors such as the secondary schools' distinctive programmes, CCAs, ethos and cultures, to shortlist schools that would best fit the educational needs of the student.
- Parents and students may consider DSA-Sec as an alternative admission pathway to access their preferred secondary school.



CONSIDERATIONS FOR CHOOSING A SECONDARY SCHOOL

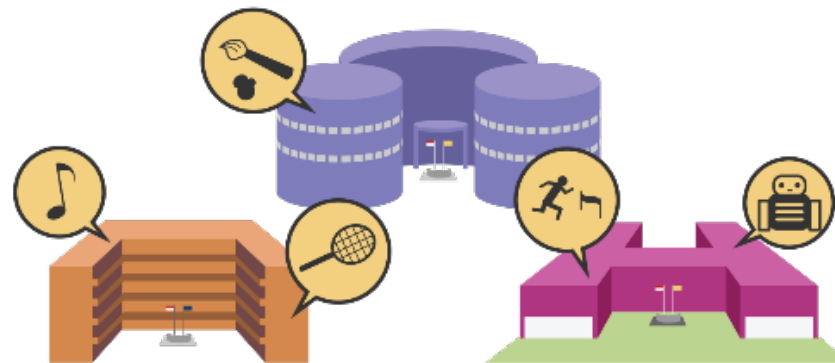
When making school choices in order to find a school that would help the child learn and thrive best:

CONSIDER



YOUR CHILD'S LEARNING NEEDS

AND



WHAT SCHOOLS CAN OFFER

To Serve To Lead



CONSIDERATIONS FOR CHOOSING A SECONDARY SCHOOL

Consider your child's strengths, interests and abilities

- **Discuss the options with your child, with the following considerations:**
 - **School culture:** What is the school's culture and ethos?
 - **Programmes, subjects and CCAs offered:** Can the school support and develop your child's interests, strengths and abilities?
 - **Location and transport options:** Is it too far from home? How will your child get to school?
- **Shortlist schools that offer programmes that cater to the child's strengths and interests, and that provide suitable learning environments**
 - Refer to **SchoolFinder** and the **MySkillsFuture Portal** for information on the schools' location, school type, CCAs, programmes and subjects they offer to shortlist schools that meet your child learning needs. Refer to the secondary schools' websites and visit their open houses.



CONSIDERATIONS FOR CHOOSING A SECONDARY SCHOOL

Parents may use this guide to start thinking about factors to consider as you shortlist secondary schools with your child. You can visit the PSLE-FSBB Microsite to get a copy of this guide and other resources.

A SECONDARY SCHOOL THAT'S SUITABLE FOR YOUR CHILD

Help them match to their strengths and interests.

ASK:
What are their strengths, interests, and abilities?

- What kind of courses, programmes and opportunities will develop these?
- Will the pace of learning be suitable for them?

CONSIDER:

- o School Culture
- o Courses
- o Programmes, Subjects and CCAs Offered
- o Location and Transport
- o If your child has Special Educational Needs
Select schools with specialised facilities or resources.

SUBMIT:

- o 6 School Options
So that your child is more likely to get into a school of choice.
- o Schools with Different Cut-Off Points
Consider at least 2-3 schools where your child's PSLE Score is better than the school's Cut-Off Point.

REFER TO:

MOE's SchoolFinder
Check out schools based on subjects offered, co-curricular activities, location and contact information.

YOUR RANKING OF SCHOOL CHOICES MATTERS.

The higher you rank your preferred school in your choice order, the better your child's chance of being posted there if there is a tie-breaker.

Do note that schools' PSLE Score ranges can vary from year to year, since they depend on each cohort's performance and choice patterns.

Ministry of Education Singapore



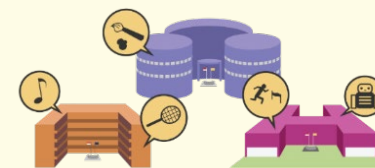
EXAMPLE: BRYAN'S JOURNEY

Bryan is in P6. Bryan had previously shortlisted 10 secondary schools based on his strengths and interests during the start of the year. Now that he has received his PSLE results, he has to decide on his 6 school options. **How should he go about it?**

BRYAN

Strengths and interests

- **Sports**, especially in **basketball** and **football**
- **Outdoor adventure**
- **Science**



PSLE Score: 16



ENGLISH	AL 3
MOTHER TONGUE	AL 4
MATHEMATICS	AL 5
SCIENCE	AL 4

PSLE SCORE: 16

EXAMPLE: BRYAN'S JOURNEY

Bryan reviews his shortlisted choices based on his PSLE Score and their PSLE Score ranges. He considers the distance from his home to the schools and makes a note on the schools that are nearer his home that have programmes that he is interested in (related to sports and science, with basketball or football CCAs).

After exploring several options, Bryan is interested in the following schools because they have Cut-Off Points (COPs) around his PSLE Score, offer sports programmes, basketball and football as CCAs, and science-related ALPs.

Secondary School A

ALP: Game Design and Robotics

LLP: Sports and Outdoor Education

CCAs: Offers basketball, football

Indicative PSLE Score range: 14 - 17

Secondary School H

ALP: Robotics and Automation

LLP: Community and Youth Leadership

CCAs: Offers basketball, football

Indicative PSLE Score range: 11 - 16

Secondary School M

ALP: Enhanced Music Programme

LLP: Digital Media

CCAs: Offers basketball, football

Indicative PSLE Score range: 15 - 18

EXAMPLE: BRYAN'S JOURNEY

Keeping in mind that he has **6** school options, Bryan also considers **other possible choices** near his home:

Secondary School E

ALP: Environmental Science and Sustainable Living

LLP: Music and Performing Arts

CCAs: Offers basketball, football

Indicative PSLE Score range: 13 - 17

Secondary School T

ALP: Digital Media

LLP: Sports and Outdoor Education

CCAs: Offers basketball, football

Indicative PSLE Score range: 15 - 19

Secondary School P

ALP: Aerospace Engineering

LLP: Community and Youth Leadership

CCAs: Offers football

Indicative PSLE Score range: 17 - 20

Bryan **visits these schools' virtual open houses** with his parents to find out more about their **programmes** and the **school culture**. Through the virtual session, he hears from their students their experiences.

Bryan is ready to consider how to rank and submit all his six school options for the S1 Posting Exercise. He also includes a few schools where his PSLE Score is better than the school's Cut-Off Point (COP) as the indicative PSLE Score ranges may vary from year to year.

Note: Depending on your child's PSLE Score, he/she may be offered a course option. If your child is eligible for 2 courses, he/she must choose 1 course before submitting his/her school choices. The selected course will apply to all the school choices.





IN SUMMARY WHEN PREPARING FOR S1 POSTING EXERCISE

- **Use all 6 options with a range of Cut-Off Points**
 - This will increase the student's chances of being posted to a school of their choice, especially since more students will fall within the same PSLE Score range.
- **Take reference from schools' PSLE Score ranges in previous years**
 - This serves as a guide for students and parents to shortlist school choices as schools' Cut-Off Points are not pre-determined in that year of posting.
 - Consider at least 2-3 schools where your child's PSLE Score is better than the school's Cut-Off Point.
- **Shortlist schools that offer programmes that cater to the student's strengths and interests, and that provide suitable learning environments**
 - Refer to SchoolFinder and the MySkillsFuture Portal for information on the schools' location, school type, CCAs, programmes and subjects they offer to shortlist schools that meet your child's learning needs. Parents may also refer to the secondary schools' websites and visit their open houses.
- **Rank your preferred school higher in your school choice order**
 - This will increase the students' chances of being posted to that school, if there is a tie-breaker.



DIRECT SCHOOL ADMISSION- DSA-SEC

What is DSA-Sec?

Direct School Admission for secondary schools (DSA-Sec) allows students to apply to some schools before taking the PSLE.

Students apply based on their talent in sports, CCAs and specific academic areas.

If your child is admitted to a secondary school through DSA-Sec, they are not allowed to:

- Submit school choices during the Secondary 1 (S1) posting process.
- Transfer to another school. They must commit to their chosen school for the duration of the programme.



DIRECT SCHOOL ADMISSION- DSA-SEC

Who can apply

Primary 6 students can apply for DSA-Sec based on a wide-range of talents, including:

- Sports and games
- Visual, literary and performing arts
- Debate and public speaking
- Science, mathematics and engineering
- Languages and humanities
- Uniformed groups
- Leadership (for example, prefects)

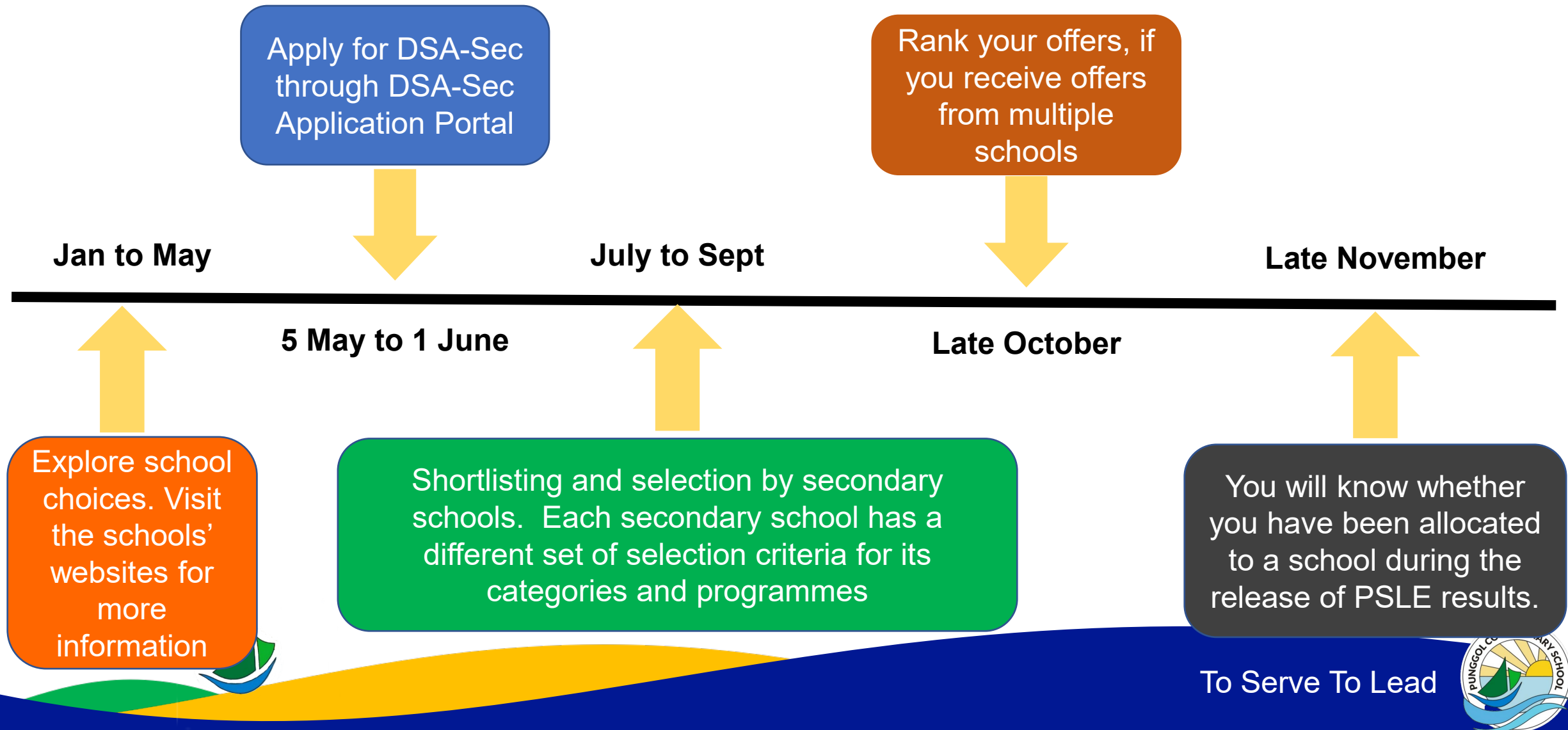


DIRECT SCHOOL ADMISSION- DSA-SEC

2022	DSA-SEC Outcome
DSA-SEC OUTCOME – 12 Successful Applicants	St. Andrew's Secondary School Edgefield Secondary School Greenridge Secondary School Yusof Ishak Secondary School Northbrooks Secondary School Greendale Secondary School School of Science and Technology, Singapore Yishun Secondary School



DSA-Sec Timeline





DIRECT SCHOOL ADMISSION- DSA-SEC

Apply via DSA microsite.

For Year 2023, dates are not released yet. However, you are encouraged to visit the website to find out more about DSA-Sec.

<https://www.moe.gov.sg/secondary/dsa>



To Serve To Lead





PARENTS
TEACHERS
COMMUNITY

LET US WRITE THE NEXT CHAPTER
OF THIS STORY TOGETHER...





OUR HOPES FOR OUR CHILDREN

LOOKING BEYOND ACADEMIC RESULTS





Attendance

- Encourage our students to be early and punctual for school.
- Students who are not in class by 7.30a.m. will be considered late.
- For persistent latecomers, students will be referred to the HOD Discipline and Student Management for further actions.





Absence from School

- Medical Certificate or a letter from parent/guardian is needed to explain child's absence. (Limit of 5 letters per semester)
- Call the General Office and leave a message for your child/ward Form Teacher.
- For matters pertaining to Covid-19, please reach out to the form teachers or school for clarifications.
- Remind your child/ward to **pass** the MC or letter to their Form Teacher when he/she is back in school.



Communication School and Home

- School Handbook
 - School phone line
 - Email the form teachers or school
 - Face-to-face with school personnel
(By appointments only)
 - **Parents Gateway**
 - Form teachers' alternative platforms
 - FTs will share their preferred mode of communication later in the respective class
- * School hours 7.30am- 4.30pm





Communication with External Stakeholders

- For communication with external stakeholders such as school dental services, school bookshop, school bus service, school uniform and student care centre, please refer to the following for their contact details:
 - Student Handbook
 - School Website (For Parents – Useful Links)



School-Home Partnership

- Familiarise yourself with school communication platforms
- Read the Student Handbook, parent memos & notifications
- Build good relationships and trust the teachers to want the best for each student



Thank You



To Serve To Lead

